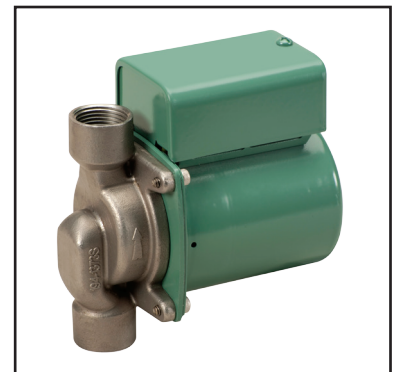
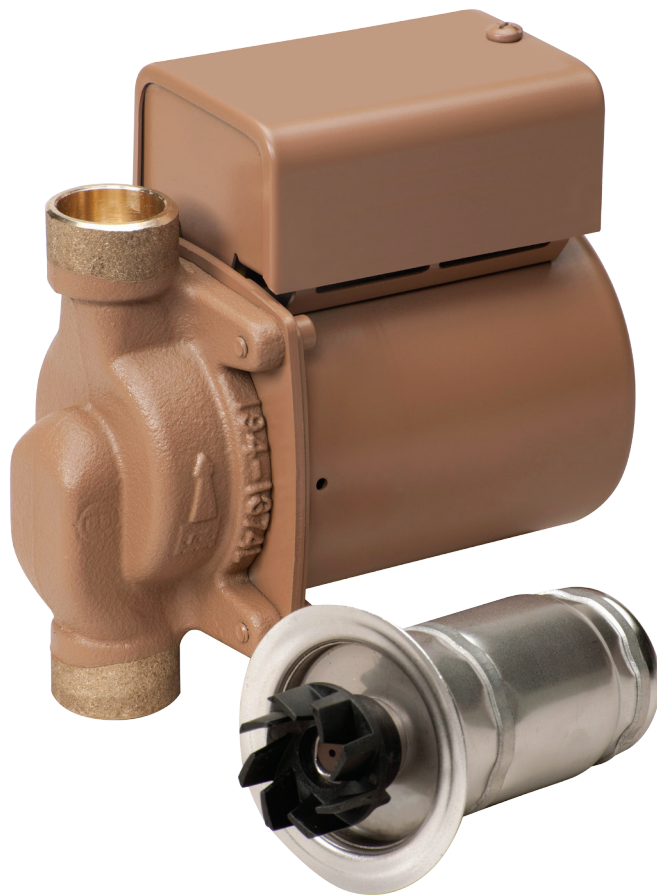


Model 006 Cartridge Circulator

The compact Taco 006 Cartridge Circulator is designed for circulating hot and chilled fresh water in a wide range of open and closed loop applications. Its unique, field-serviceable cartridge contains all moving parts. Replacing the cartridge rebuilds the circulator. With no mechanical seal, the self-lubricating, maintenance free design provides quiet, efficient operation and unmatched reliability. Available in Low-Lead Bronze, sweat or Stainless Steel, threaded or union connections.



Stainless Steel



Low-Lead
Compliant



Submission Data Information Model 006 Cartridge Circulator

Submission Data # 101-028
Supersedes: 06/01/11

Effective: 04/02/13

Features

- Standard High Capacity Output-Compact Design
- Quiet, Efficient Operation
- Direct Drive-Low Power Consumption
- Unique Replaceable Cartridge Design-Field Serviceable
- Self Lubricating
- No Mechanical Seal
- Unmatched Reliability-Maintenance Free
- Low-Lead Bronze or Stainless Steel Construction with Sweat, Threaded or Union Connections

Materials of Construction

Casing (Volute):.....Low-Lead Bronze or Stainless Steel
Stator Housing:.....Steel
Cartridge:.....Stainless Steel
Impeller:.....Non-Metallic
Shaft:.....Ceramic
Bearings:.....Carbon
O-Ring & Gaskets:.....EPDM
Chlorine Resistant

Model Nomenclature

B - Bronze, 3/4" Sweat
BC - Bronze, 1/2" Sweat, Panel Mount Tappings
ST - Stainless Steel, 3/4" NPT
SC - Stainless Steel, Union, Panel Mount Tappings

Performance Data

Flow Range: 0 – 11 GPM
Head Range: 0 – 9.5 Feet
Min. Fluid Temperature: 40°F (4°C)
Max. Fluid Temperature: 220°F (104°C)
Max. Working Pressure: 125 psi
Connection Sizes: 1/2" Swt, 3/4" Swt, 3/4" NPT or Union

Certifications & Listings

UL FOR INDOOR USE ONLY
US LISTED

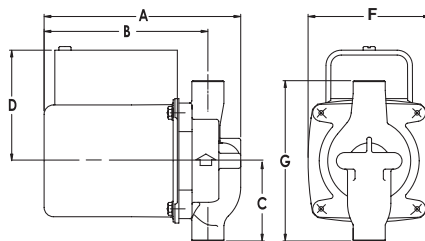
NSF Low-Lead Compliant
Certified to NSF/ANSI 372

Application

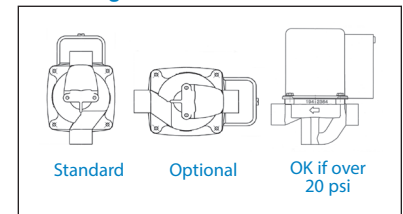
The Taco 006 is designed for circulating hot or chilled fresh water in open or closed loop applications. Typical uses include hydronic heating, domestic hot water recirculation, hydro-air heating/cooling, heat recovery units, water source heat pumps, drain down open loop Solar systems and potable water applications. The unique, replaceable cartridge contains all of the moving parts and allows for easy service instead of replacing the entire circulator. The compact, low power consumption design is ideal for high efficiency jobs.

Pump Dimensions & Weights

Models	Conn.	A		B		C		D		F		G		Ship Wt.	
		in.	mm	in.	mm	in.	mm	in.	mm	in.	mm	in.	mm	lbs.	Kg
006-B4	3/4" Swt.	5-1/8	130	4-1/8	105	2-3/16	56	3-1/16	78	3-15/16	84	4-13/32	112	6.0	2.7
006-BC4	1/2" Swt.	5-1/8	130	4-1/8	105	2-1/8	54	3-1/16	78	3-15/16	84	4-1/4	108	6.0	2.7
006-ST4	3/4" NPT	5-5/8	143	4-7/8	124	2	51	3-1/16	78	3-15/16	84	4	102	6.0	2.7
006-SC4-1	Union	5-5/32	131	4-11/32	110	2-31/32	76	3-1/16	78	3-15/16	84	5-15/16	151	6.0	2.7



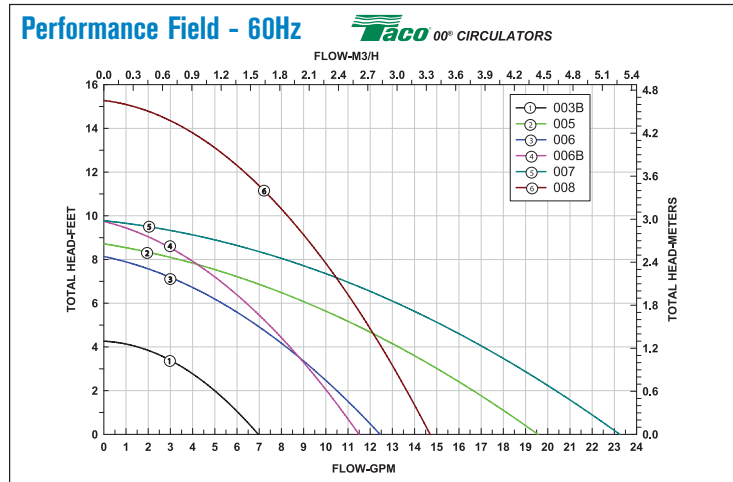
Mounting Positions



Electrical Data

Model	Volts	Hz	Ph	Amps	RPM	HP
All 006 Models	115	60	1	.52	3250	1/40
Motor Type	Permanent Split Capacitor Impedance Protected					
Motor Options	220/50/1, 220/60/1, 230/60/1, 100/110/50/60/1					

Performance Field - 60Hz



Taco
Do your best work.