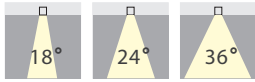


NOVA-C S

Ceiling Mounted Light



Quickinfo

GENERAL

ceiling mounted
with internal LED driver

LED

COB LED module
2700K, 3000K, 4000K
CRI > 80, CRI > 90
Bining < 3-Step MacAdam

ESTIMATED LED LIFETIME

L80 / 50,000h

OPTICAL

direct illumination
beam angle 18°, 24°, 36°

ELECTRICAL

non DIM

PHYSICAL

aluminium
powder coating

Function

Cylindrical surface mounted light made of aluminum.

Ultra-slim housing design with LED driver inside.

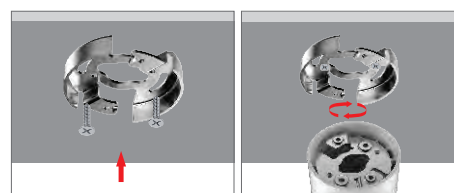
Optimized passive cooling system ensures low temperature and long lifetime of LED.

Interchangeable decoration ring for various lighting application.

Adopt of lens guarantees high luminous efficiency and uniform distribution.

Very easy to change lens (twist and lock) to choose spot, narrow and medium beam angle.

Features



Ceiling installation plate fixed by screws

Twist and lock system between housing and ceiling installation plate



NOVA-C S

Ceiling Mounted Light

Order options

COLOUR TEMPERATURE

2700K
3000K
4000K

COLOUR RENDERING INDEX

CRI 80
CRI 90

HOUSING COLOUR



White



Black

LENS



18°Beam



24°Beam



36°Beam

ANTI-GLARE ACCESSORY



Honeycomb mesh
HM-M

DECORATION RING



Black



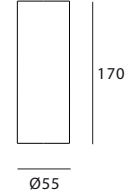
Gold



White

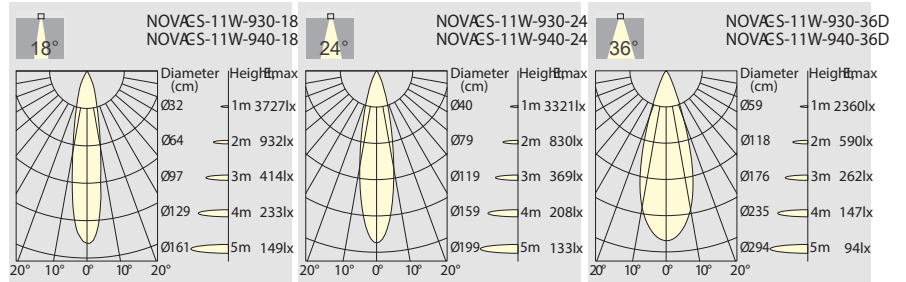
NOVA-C S

3000K
(Standard)



Light distribution for 3000K

11W 720lm-800lm



Order Information

NOVA-C S-11W 700 Lm MODELS

(CITIZEN LED)

Code	LED output	Module output	CD	LED Power	System Power	CRI	CCT	BEAM
NOVA-C S-11W-930-18D	950 lm	720 lm	3733 cd	9 W	11 W	90	3000K	18°
NOVA-C S-11W-940-18D	1050 lm	800 lm	4294 cd	9 W	11 W	90	4000K	18°
NOVA-C S-11W-930-24D	950 lm	720 lm	3321 cd	9 W	11 W	90	3000K	24°
NOVA-C S-11W-940-24D	1050 lm	800 lm	3543 cd	9 W	11 W	90	4000K	24°
NOVA-C S-11W-930-36D	950 lm	720 lm	2361 cd	9 W	11 W	90	3000K	36°
NOVA-C S-11W-940-36D	1050 lm	800 lm	2545 cd	9 W	11 W	90	4000K	36°

NOVA-C M

Ceiling Mounted Light



Quickinfo

GENERAL

ceiling mounted
with internal LED driver

LED

COB LED module
2700K, 3000K, 4000K
CRI > 80, CRI > 90
Bining < 3-Step MacAdam

ESTIMATED LED LIFETIME

L80 / 50,000h

OPTICAL

direct illumination
beam angle 15°, 25°, 30°

ELECTRICAL

non DIM

PHYSICAL

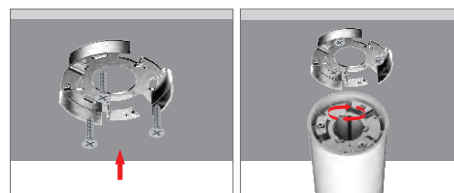
aluminium
powder coating

Function

Cylindrical surface mounted light made of aluminum.
Elegant design with LED driver inside housing.
Optimized passive cooling system ensures low temperature and long lifetime of LED.

Interchangeable decoration ring for various lighting application.
Adopt of lens guarantees high luminous efficiency and uniform distribution.
Very easy to change lens (twist and lock) to choose spot, narrow and medium beam angle.

Features



Ceiling installation plate fixed by screws
Twist and lock system between housing and ceiling installation plate

NOVA-C M

Ceiling Mounted Light

Order options

SYSTEM POWER

15W
21W

COLOUR TEMPERATURE

2700K
3000K
4000K

COLOUR RENDERING INDEX

CRI 80
CRI 90

HOUSING COLOUR



White Black

LENS



15°Beam 25°Beam 30°Beam

ANTI-GLARE ACCESSORY



Honeycomb mesh
HM-M

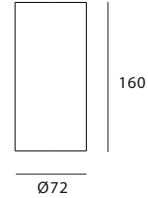
DECORATION RING



Black Gold White

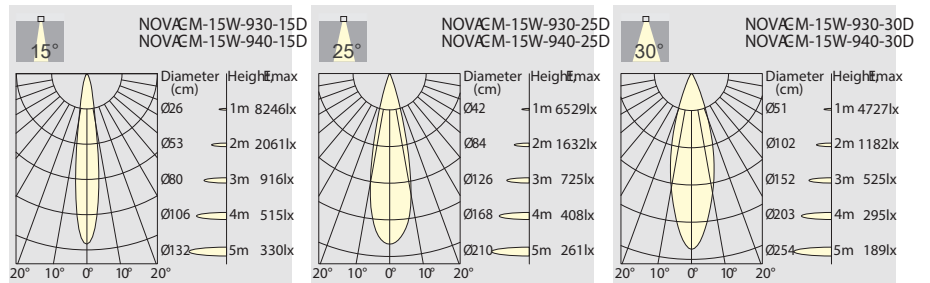
NOVA-C M

3000K
(Standard)



Light distribution for 3000K

15W 1200lm-1300lm



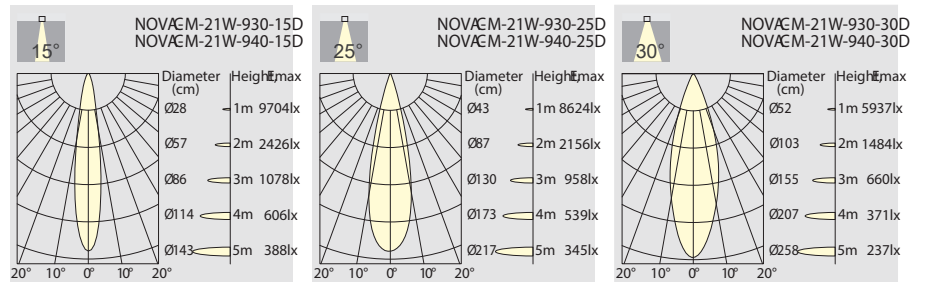
Order Information

NOVA-C M-15W 1200 Lm MODELS

(CITIZEN LED)

Code	LED output	Module output	CD	LED Power	System Power	CRI	CCT	BEAM
NOVA-C M-15W-930-15D	1500 lm	1200 lm	8246 cd	13 W	15 W	90	3000K	15°
NOVA-C M-15W-940-15D	1600 lm	1300 lm	8486 cd	13 W	15 W	90	4000K	15°
NOVA-C M-15W-930-25D	1500 lm	1200 lm	6532 cd	13 W	15 W	90	3000K	25°
NOVA-C M-15W-940-25D	1600 lm	1300 lm	6658 cd	13 W	15 W	90	4000K	25°
NOVA-C M-15W-930-30D	1500 lm	1200 lm	4727 cd	13 W	15 W	90	3000K	30°
NOVA-C M-15W-940-30D	1600 lm	1300 lm	4944 cd	13 W	15 W	90	4000K	30°

21W 1600lm-1700lm



Order Information

NOVA-C M-21W 1600 Lm MODELS

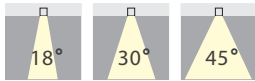
(CITIZEN LED)

Code	LED output	Module output	CD	LED Power	System Power	CRI	CCT	BEAM
NOVA-C M-21W-930-15D	2000 lm	1600 lm	9709 cd	18 W	21 W	90	3000K	15°
NOVA-C M-21W-940-15D	2100 lm	1700 lm	10616 cd	18 W	21 W	90	4000K	15°
NOVA-C M-21W-930-25D	2000 lm	1600 lm	8624 cd	18 W	21 W	90	3000K	25°
NOVA-C M-21W-940-25D	2100 lm	1700 lm	9494 cd	18 W	21 W	90	4000K	25°
NOVA-C M-21W-930-30D	2000 lm	1600 lm	5939 cd	18 W	21 W	90	3000K	30°
NOVA-C M-21W-940-30D	2100 lm	1700 lm	6837 cd	18 W	21 W	90	4000K	30°



NOVA-C L

Ceiling Mounted Light



Quickinfo

GENERAL

ceiling mounted
with internal LED driver

LED

COB LED module
2700K, 3000K, 4000K
CRI > 80, CRI > 90
Bining < 3-Step MacAdam

ESTIMATED LED LIFETIME

L80 / 50,000h

OPTICAL

direct illumination
beam angle 18°, 30°, 45°

ELECTRICAL

nonDIM

PHYSICAL

aluminium
powder coating

Function

Cylindrical surface mounted light made of aluminum.

Functional housing design with LED driver inside.

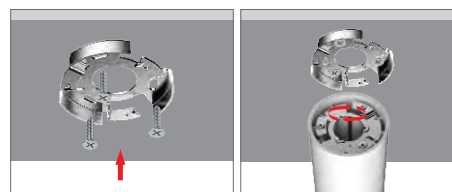
Optimized passive cooling system ensures low temperature and long lifetime of LED.

Interchangeable decoration ring for various lighting application.

Adopt of lens guarantees high luminous efficiency and uniform distribution.

Very easy to change lens (twist and lock) to choose spot, narrow and medium beam angle.

Features



Ceiling installation plate fixed by screws

Twist and lock system between housing and ceiling installation plate



NOVA-C L

Ceiling Mounted Light

Order options

COLOUR TEMPERATURE

2700K
3000K
4000K

COLOUR RENDERING INDEX

CRI 80
CRI 90

HOUSING COLOUR



White



Black

LENS



18°Beam



30°Beam



45°Beam

ANTI-GLARE ACCESSORY



Honeycomb mesh
HM-M

DECORATION RING



Black



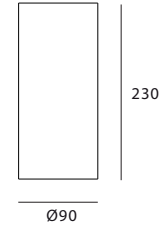
Gold



White

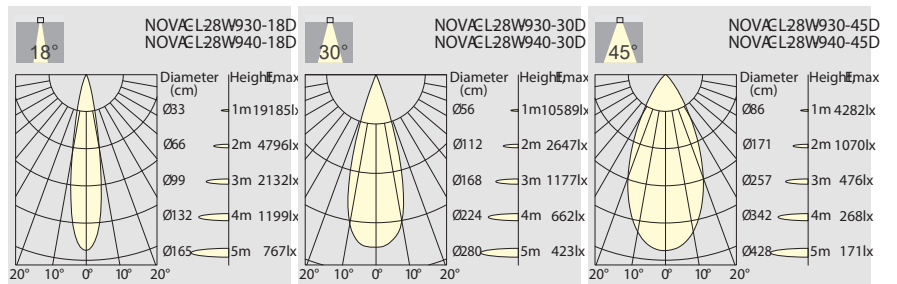
NOVA-C L

3000K
(Standard)



Light distribution for 3000K

28W 2700lm-2900lm



Order Information

NOVA-C L-28W 2700 Lm MODELS

(CITIZEN LED)

Code	LED output	Module output	CD	LED Power	System Power	CRI	CCT	BEAM
NOVA-C L-28W-930-18D	3400 lm	2700 lm	19194 cd	25 W	28 W	90	3000K	18 °
NOVA-C L-28W-940-18D	3600 lm	2900 lm	20012 cd	25 W	28 W	90	4000K	18 °
NOVA-C L-28W-930-30D	3400 lm	2700 lm	10662 cd	25 W	28 W	90	3000K	30 °
NOVA-C L-28W-940-30D	3600 lm	2900 lm	11854 cd	25 W	28 W	90	4000K	30 °
NOVA-C L-28W-930-45D	3400 lm	2700 lm	4285 cd	25 W	28 W	90	3000K	45 °
NOVA-C L-28W-940-45D	3600 lm	2900 lm	4588 cd	25 W	28 W	90	4000K	45 °