

LEATHERS

We offer high-quality top grain natural leather from Sørensen Leather for our upholstered furniture. We work with three different styles, each with specific attributes that accommodate different needs.

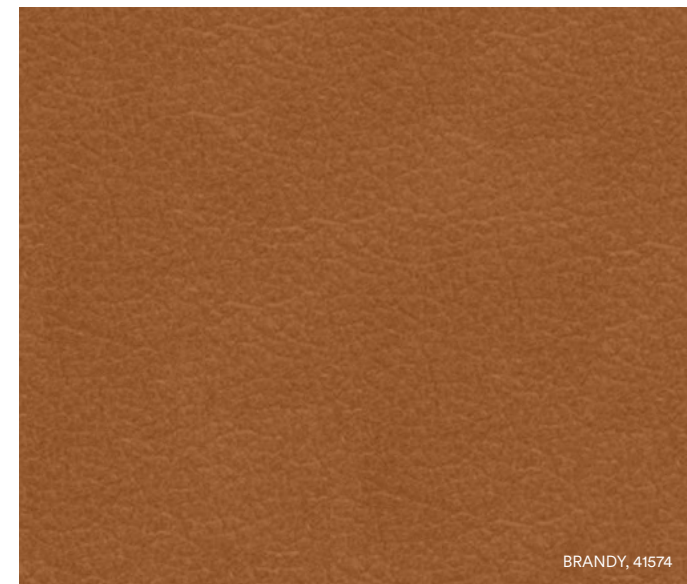




Ark 3 Seater Sofa in Ultra Leather, 41571

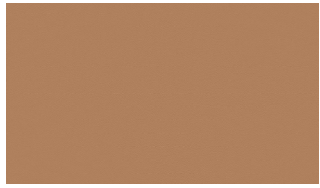
ULTRA

A buffed and embossed leather with a uniform grain pattern spanning over the entire hide. Thanks to its extremely strong protective finish, it's very durable and easy to maintain.



Manufacturer	Sørensen Leather
Thickness	0.9 – 1.1 mm
Origin	Non-European
Finish	Extremely strong surface protection
Tannage	Chrome
Dye	Water-based aniline dye
Color fastness to rubbing	Wet 250 rubs: 4, Dry 500 rubs: 4-5, Perspiration 80 rubs: 4 (DIN EN ISO 11640)
Color fastness to light	6-7 (DIN EN ISO 105-B02)
Flammability test	CA TB 117-2013 – Non-ignition
Cigarette + match	BS EN 1021-1 and 2 – Non-ignition
Environment	PCP: According to EU Council Directive 76/769/EEC AZO dyes: According to EU Council Directive 76/769/EEC Chrome VI: Our leather does not contain chrome VI REACH: According to European Community Regulation on chemicals and their safe use (EC 1907/2006)
	Oeko-Tex Certified

Leathers Ultra



CAMEL

41571



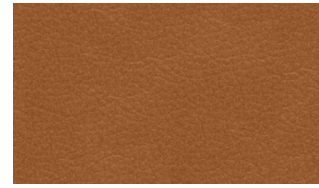
HONEY

41572



NAVY

41573



BRANDY

41574



LAVA

41575



ALTWEISS

41576



POPPY

41578



BRICK

41579



ANTHRAZIT

41580



EGGSHELL

41581



EARTH

41584



GREY

41585



SAFARI

41586



CHOCOLATE

41589



BLACK BROWN

41590



WHITE

41594



COGNAC

41598



BLACK

41599



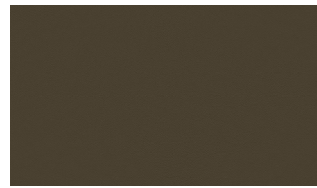
LEAF

41566



MARSH

41570



MOSS

41569



OAT

41568



SMOKE

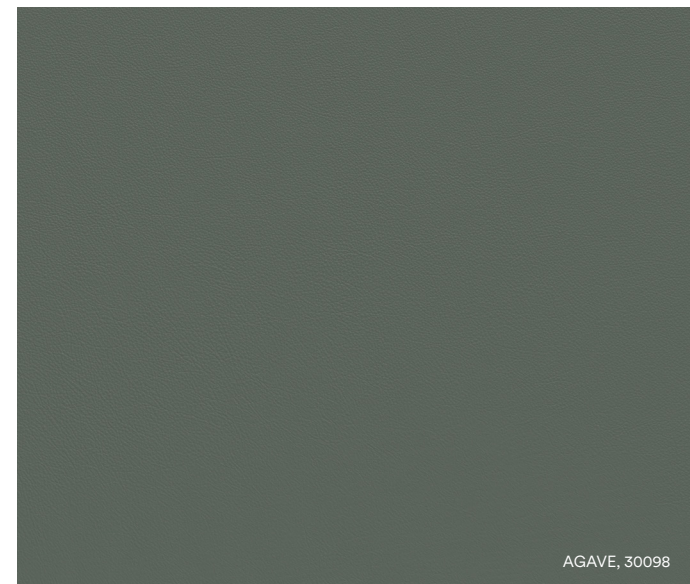
41567



SPECTRUM

A soft leather with a subtle texture that looks more uniform, thanks to a light surface finish that works to protect the leather from dirt, stains and any fading resulting from exposure to light.

Only available on Herit Chair



Manufacturer	Sørensen Leather
Thickness	1.0 – 1.2 mm
Origin	European rawhide, typically from Italy, Germany, Austria, Switzerland and Scandinavia
Finish	Light surface protection
Tannage	Chrome
Dye	Water-based aniline dye
Color fastness to rubbing	Wet 250 rubs: 4-5, Dry 500 rubs: 4, Perspiration 80 rubs: 4 (DIN EN ISO 11640)
Color fastness to light	6 (DIN EN ISO 105-B02)
Flammability test	CA TB 117-2013 – Non-ignition
Cigarette + match	BS EN 1021-1 and 2 – Non-ignition
Environment	PCP: According to EU Council Directive 76/769/EEC AZO dyes: According to EU Council Directive 76/769/EEC Chrome VI: Our leather does not contain chrome VI REACH: According to European Community Regulation on chemicals and their safe use (EC 1907/2006)
	Oeko-Tex Certified

Leathers Spectrum



CLOUD

30079



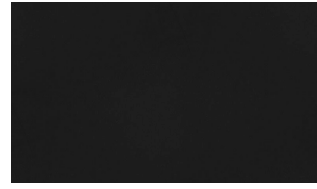
AGAVE

30098



MARBLE

30105



BLACK

30114



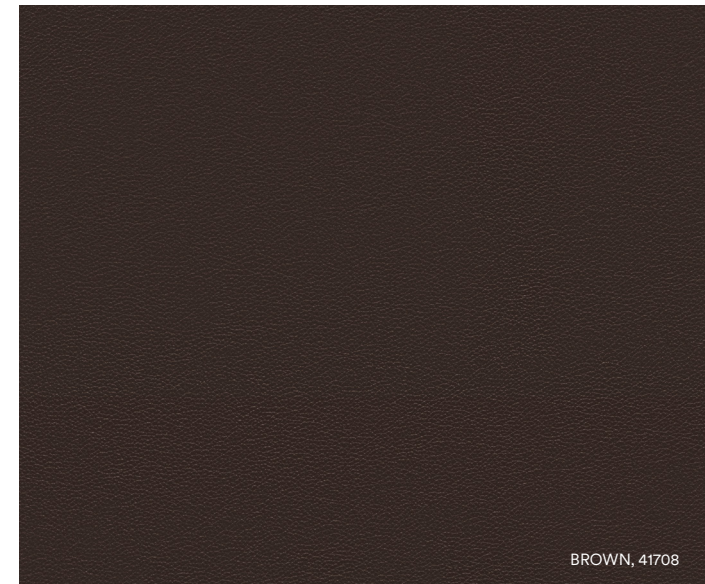
WHITE

30140

OPTIMO

A premium leather that is surprisingly soft
yet sturdy, making comfort a pure pleasure
in any type of seating solution.

Only available on Rope sofa



BROWN, 41708

Manufacturer	Sørensen Leather
Thickness	1.1 – 1.3 mm
Origin	European rawhide, typically from Italy, Germany, Austria and Switzerland
Finish	Extremely strong surface protection
Tannage	Chrome-free
Dye	Water-based aniline dye
Color fastness to rubbing	Wet 250 rubs: 3-4, Dry 500 rubs: 4, Perspiration 80 rubs: 3-4 (BS EN ISO 11640)
Color fastness to light	5 (BS EN ISO 105-B02)
Flammability test	TB 117 - 2013
Cigarette + match	BS EN 1021-1 and 2
Environment	PCP: According to EU Council Directive 76/769/EEC AZO dyes: According to EU Council Directive 76/769/EEC Chrome VI: Our leather does not contain chrome VI REACH: According to European Community Regulation on chemicals and their safe use (EC 1907/2006) Oeko-Tex Certified

Leathers Optimo



BLACK

41703



COGNAC

41704



DARK BROWN

41705



GREY

41706



NOUGAT

41707



BROWN

41708



WHITE

41710

RAR COLLECTION

There's nothing quite as timeless as a classic leather upholstery. Omaha Leather is an archetypal cognac leather with a natural look and a soft tactility, specifically chosen for the minimalistic silhouette of the Rar Sofa collection.



OMAHA

COGNAC

OMAHA

Leather thickness 0,9 - 1,1 mm

Stain/Maintenance 6

Leather type Corrected

CONTACT

NORMANN COPENHAGEN

Niels Hemmingsens Gade 12,
1153 Copenhagen, Denmark

normann@normann-copenhagen.com
+45 35 55 44 59

normann
C O P E N H A G E N