

# SPECIFICATIONS

## PRODUCT TYPE

Lounge chair  
Coffee table

## ENVIRONMENT

Indoor

## DESIGNER / YEAR OF DESIGN

Poul Kjærholm, 1956

## ABOUT THE DESIGNER

Poul Kjærholm was a trained cabinet maker and continued his studies at the Danish School of Arts and Crafts in Copenhagen. He had a particular interest in different construction materials, especially steel, which he considered a natural material with the same artistic fineness as other natural materials.

Poul Kjærholm was first employed at Fritz Hansen for about a year, where he designed a number of noteworthy chair prototypes. In 1955, Poul Kjærholm initiated his collaboration with manufacturer Ejvind Kold Christensen, which lasted until Kjærholm's death in 1980. In 1982, Fritz Hansen took over the manufacture and sales of "The Kjærholm Collection", which was developed over the period 1951 to 1967.

## MODELS

PK22  
PK61

## MATERIAL

**PK22:** The lounge chair is made from one seat and back piece mounted on a steel frame. The seat and back piece comes in Haze leather. The lounge chair is also available in the standard surface selection; canvas, leather and wicker. The frame is made of satin brushed stainless spring steel.

**PK61:** The coffee table comes with a tabletop in Viscount granite. The coffee table is also available in the standard surface selection; slate, marble, granite and glass. The base for the table is made of satin brushed stainless steel. The four base elements are joined with machine screws that lend the table part of its unique look.

## MATERIALS IN %:

<b>PK22:</b>	<b>PK61:</b>
Steel: 72%	Steel: 13%
Leather: 14%	Stone: 87%
Flax: 14%	

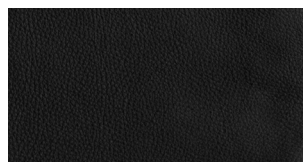
## SURFACES

### HAZE LEATHER:

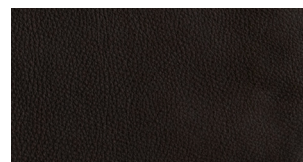
An aniline leather distinguished by its velvety softness and hand-finished surface. Each hide is carefully sanded to achieve a silky, stone-washed look that feels both raw and refined. Natural markings and subtle tonal variations are celebrated as part of its authentic character, ensuring every chair is one of a kind.

Over time, Haze evolves beautifully. Its open surface develops a rich patina, becoming smoother and lighter with use, and gaining an individual expression that reflects its owner. Combined with Kjærholm's precise steel frame, the tactile depth of Haze leather adds warmth and sensorial richness to this modern classic - discreet, sculptural, and unmistakably refined.

Haze leather is available in 4 colours:



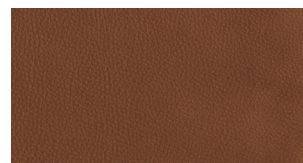
ANTHRACITE



DARK BROWN



BEIGE



WALNUT

## GRANITE (ROLLED):

The granite's subtle, light-toned surface enhances the table's sculptural clarity while offering a refined sense of tactility and permanence. Its distinctive veining and rolled finish reveal the organic beauty of stone, echoing Kjærholm's fascination with natural materials and their dialogue with industrial form. Together, the steel and granite create a composition of quiet contrast — precise yet warm, minimal yet deeply expressive.

Rolled granite is available in 1 colour:



GREY-WHITE

## MADE-TO-ORDER

N/A

## CERTIFICATION

For more information about environment and manufacturing processes, please download our environmental information sheet at: [fritzhanzen.com](http://fritzhanzen.com)

## TEST

- PK22: Tested according to EN1022, Determination of stability
- PK61: N/A

## WEIGHT

PK22 (Leather): 10,1 kg / 22.3 lb  
PK61 (Granite): 65,6 kg / 144.6 lb

## COUNTRY OF ORIGIN

Denmark

## PRE-ASSEMBLED

PK22: Yes

PK61: No

## PACKAGING

PK22: The chair is shipped in a cardboard box. Inside the box, the item is wrapped in a PE bag to protect from dust, as well as vulnerable corners are protected with PE foam.

PK61: The tabletop is shipped in a plywood box. Inside the box the tabletop are protected by PE foam. The base is shipped in a cardboard box. Inside the box the base is protected by PE foam.

All packaging material can be recycled depending on local capability.

## CLEANING AND CARE

Find recommendations for cleaning and care at: [fritzhanzen.com/maintenance](https://fritzhanzen.com/maintenance)

## REPAIR, DISPOSAL AND REUSE

In case of repair and disposal, the chair and table can be disassembled and replaced/disposed accordingly. Check local regulations for recycling options and whether there is potential for reuse.

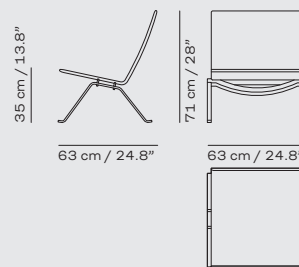
## WARRANTY

Fritz Hansen provides a standard 20-year warranty.

Additional warranty conditions can be found at: [fritzhanzen.com/warranty](https://fritzhanzen.com/warranty)

## DIMENSIONS

PK22



PK61

