

Rosko

JULIEN

FURNITURE

CATALOG

QUALITY ACCESSIBLE TO ALL

DISCOVER
ROSKO **03**

THE ROSKO
DIFFERENCE **04**

THE ROSKO
OFFER **06**

WORKTABLES AND
EQUIPMENT STANDS **08** RO-WT
RO-ES

SHELVING UNITS
AND PAN RACKS **14** RO-OSD
RO-WS
RO-RACK

WALL SHELVES **22** RO-WMS
RO-WMMS

INDEX **28**

WARRANTY **31**

DISCOVER ROSKO

Over the past 75 years, Julien has become an expert in professional kitchen equipment manufacturing and stainless-steel processing. However, beyond this manufacturing expertise, we at Julien have a true passion for restaurant equipment. It is with great enthusiasm that we begin this new chapter by introducing our latest brand dedicated to the professional kitchen: Rosko.

With quality, accessibility, and durability guaranteed, the Rosko product line is designed to provide you with a turnkey solution for your kitchen. Our range of stainless-steel cooking, washing, and furniture equipment is sure to meet your workstation needs.

We are proud to say that all our cooking equipment is made in our own factory located in the heart of Quebec City. From technical assistance to after sales service, every product is backed by the expertise and support of the entire Julien team.





THE ROSKO DIFFERENCE

75

THE STRENGTH OF OUR HERITAGE

The new food service equipment brand Rosko is born from Julien's expertise and passion. Based in Quebec City, Julien has specialized in designing and building professional kitchen equipment for more than 75 years. Today, Rosko aims to become your true food service equipment partner.



INHERENT QUALITY

Through the years, Julien has become master in the transformation of stainless steel. This is why all Rosko products are designed and fabricated in this durable material, perfectly adapted for the kitchen environment. All Rosko equipment is thoroughly factory tested to ensure safety, performance and long lasting lifespan.



A LOCAL SOLUTION

Meet all your cooking, washing and furniture equipment needs with a trusted and proudly Canadian brand. Moreover, all cooking equipment are designed, fabricated and tested in our facility.

FURNITURE

Optimize your kitchen features with the addition of worktables, pan racks, equipment racks, shelves and wall shelves. Stainless steel is the ideal material for commercial kitchen furniture because it is resistant and easy to clean. Also, our different products offer a wide range of sizes to fit your space needs. The entire Rosko furniture collection is certified to NSF/ANSI 2 standards, as the restaurant industry requires.

WASHING



Stainless steel washing products are essential to comply with wet environments and the restaurant's numerous hygiene rules. You must also think about what sinks, and dish tables will ideally suit your commercial kitchen's layout, all the while being functional and easy to maintain. They will quickly become indispensable to your daily life. All our washing solutions are also certified by NSF and CSA.

COOKING



The smooth operation of your commercial kitchen is greatly dependent on your facilities. That's why it's essential to have quality cooking equipment from Rosko. Our line of products includes fryers, griddles, grills, ranges, stoves and steamers. The various floors and countertop appliances are designed for gas or electric cooking. All equipments are made of stainless steel and are thoroughly tested directly from the assembly line. Manufactured in our Quebec City plant in Canada, Rosko products are reliable, durable, but mostly, accessible.

WORKTABLES AND EQUIPMENT STANDS



Rosko

There are as many different kitchen spaces as there are chefs. That's why we offer a variety of worktables and equipment stands in several sizes. Made entirely of grade 430 stainless steel, Rosko worktables have adjustable legs to ensure the comfort of all kitchen staff. Their easy assembly and solid construction make them perfect choices for your restaurant kitchen.

- Stainless steel feet, legs and bottom shelf;
- Longitudinal reinforcements under the work surface;
- Large weight capacity.

RO-WT-2424
RO-WT-3024
RO-WT-3624
RO-WT-4824
RO-WT-6024
RO-WT-7224
RO-WT-8424
RO-WT-9624
RO-WT-3030
RO-WT-3630
RO-WT-4830
RO-WT-6030
RO-WT-7230
RO-WT-8430
RO-WT-9630

RO-ES-2424
RO-ES-2430
RO-ES-3630
RO-ES-4830



RO-WT WORKTABLE



RO-WT-4824

FEATURES

- Made of grade 430 stainless steel - 18 gauge
- Stainless steel legs
- Stainless steel adjustable bottom shelf
- Adjustable stainless steel feet
- Longitudinal reinforcements under the work surface
- Two (2) depths available
- Central legs on 84" (2134 mm) and 96" (2438 mm) wide models
- Quick and easy to assemble
- Certified to NSF/ANSI 2 standards



MODELS

MODELS	Width (W)	Depth (D)	Total height	Number of legs
RO-WT-2424	24" - 610 mm	24" - 610 mm	34" - 864 mm	4
RO-WT-3024	30" - 762 mm	24" - 610 mm	34" - 864 mm	4
RO-WT-3624	36" - 914 mm	24" - 610 mm	34" - 864 mm	4
RO-WT-4824	48" - 1219 mm	24" - 610 mm	34" - 864 mm	4
RO-WT-6024	60" - 1524 mm	24" - 610 mm	34" - 864 mm	4
RO-WT-7224	72" - 1828 mm	24" - 610 mm	34" - 864 mm	4
RO-WT-8424	84" - 2134 mm	24" - 610 mm	34" - 864 mm	6
RO-WT-9624	96" - 2438 mm	24" - 610 mm	34" - 864 mm	6
RO-WT-3030	30" - 762 mm	30" - 762 mm	34" - 864 mm	4
RO-WT-3630	36" - 914 mm	30" - 762 mm	34" - 864 mm	4
RO-WT-4830	48" - 1219 mm	30" - 762 mm	34" - 864 mm	4
RO-WT-6030	60" - 1524 mm	30" - 762 mm	34" - 864 mm	4
RO-WT-7230	72" - 1828 mm	30" - 762 mm	34" - 864 mm	4
RO-WT-8430	84" - 2134 mm	30" - 762 mm	34" - 864 mm	6
RO-WT-9630	96" - 2438 mm	30" - 762 mm	34" - 864 mm	6

ACCESSORIES



RO-ACC-WDT-2418
Drawer 28" Wide for
Worktable 24" Deep,
Inside Pan 24" X 18"

RO-ACC-WDT-3018
Drawer 34" Wide for
Worktable 24" Deep,
Inside Pan 30" X 18"

RO-ACC-WDT-1824
Drawer 22" Wide for
Worktable 30" Deep,
Inside Pan 18" X 24"

RO-ACC-WDT-2424
Drawer 28" Wide for
Worktable 30" Deep,
Inside Pan 24" X 24"

RO-ES EQUIPMENT STAND



RO-ES-4830

MODELS

	Width (W)	Depth (D)	Total height
RO-ES-2424	24" - 610 mm	24" - 610 mm	24" - 610 mm
RO-ES-2430	24" - 610 mm	30" - 762 mm	24" - 610 mm
RO-ES-3630	36" - 914 mm	30" - 762 mm	24" - 610 mm
RO-ES-4830	48" - 1219 mm	30" - 762 mm	24" - 610 mm

FEATURES

- Made of grade 430 stainless steel - 18 gauge
- 2" (51 mm) edges on three sides
- Longitudinal reinforcements under the top shelf
- Adjustable stainless steel bottom shelf
- Stainless steel legs
- Adjustable stainless steel feet
- Quick and easy to assemble
- Certified to NSF/ANSI 2 standards





SHELVING UNITS AND PAN RACKS

Our storage and transportation product are solidly constructed, shock resistant, and made of rust-free material. Pan racks with wheels are ideal for storing and moving food trays, cooking plates, and dish bins. Our storage solutions are offered in various dimensions, a significant advantage when space is limited. Stay organized and efficient using Rosko shelving units.

- Sturdy and durable construction;
- Many dimensions offered;
- Quick assembly and installation.

RO-OSD-3612
RO-OSD-4812
RO-OSD-6012
RO-OSD-7212

RO-WS-P54-GE
RO-WS-P64-GE
RO-WS-P74-GE
RO-WS-P86-GE

RO-WS-S2414-GE
RO-WS-S2418-GE
RO-WS-S2424-GE
RO-WS-S3014-GE
RO-WS-S3018-GE
RO-WS-S3024-GE
RO-WS-S3614-GE
RO-WS-S3618-GE
RO-WS-S3624-GE
RO-WS-S4814-GE
RO-WS-S4818-GE
RO-WS-S4824-GE
RO-WS-S6014-GE
RO-WS-S6018-GE
RO-WS-S6024-GE
RO-WS-S7214-GE
RO-WS-S7218-GE
RO-WS-S7224-GE

RO-RACK-1216-ALU
RO-RACK-1218-ALU
RO-RACK-2018-ALU



RO-OSD

DOUBLE SHELF FOR WORKTABLE



RO-OSD-4812

MODELS

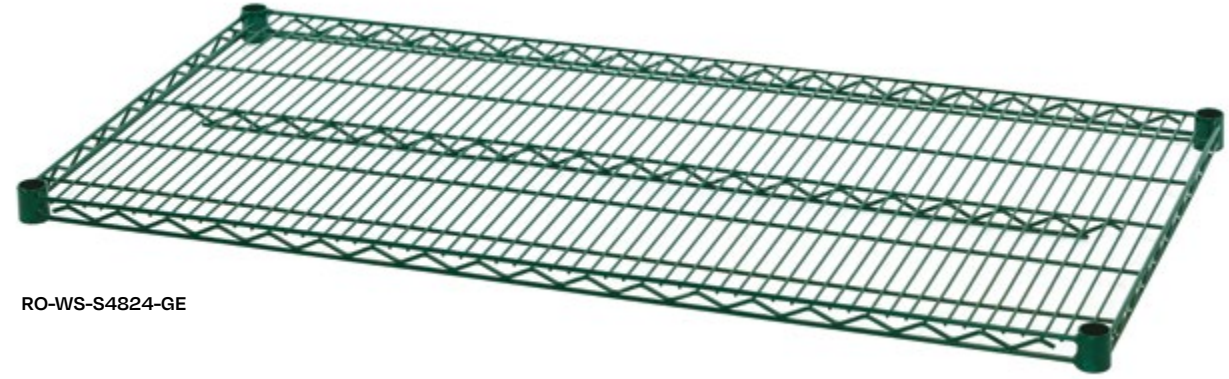
	Width (W)	Depth (D)	Total height
RO-OSD-3612	36" – 914 mm	12" – 305 mm	32" – 813 mm
RO-OSD-4812	48" – 1219 mm	12" – 305 mm	32" – 813 mm
RO-OSD-6012	60" – 1524 mm	12" – 305 mm	32" – 813 mm
RO-OSD-7212	72" – 1829 mm	12" – 305 mm	32" – 813 mm

FEATURES

- Made of grade 430 stainless steel – 18 gauge
- Adjustable stainless steel bottom shelf included
- Quick and easy to assemble
- Designed for edge mount installation
- Mounting brackets included
- Certified to NSF/ANSI 2 standards



RO-WS WIRE SHELVING



RO-WS-S4824-GE

FEATURES

- Made of steel with durable green epoxy finish
- Posts and shelves sold separately
- Three (3) shelf depths available
- Posts with steel leveling foot
- Posts height identification
- Mounting clips included
- Quick and easy to assemble
- Certified to NSF/ANSI 2 standards



POST FOR WIRE SHELVING



RO-WS-P74-GE

MODELS	Diameter	Height
RO-WS-P54-GE	1" - 25 mm	54" - 1372 mm
RO-WS-P64-GE	1" - 25 mm	64" - 1626 mm
RO-WS-P74-GE	1" - 25 mm	74" - 1880 mm
RO-WS-P86-GE	1" - 25 mm	86" - 2184 mm

MODELS

MODELS	Width (W)	Depth (D)	Total height
RO-WS-S2414-GE	24" - 610 mm	14" - 356 mm	1 1/4" - 32 mm
RO-WS-S2418-GE	24" - 610 mm	18" - 457 mm	1 1/4" - 32 mm
RO-WS-S2424-GE	24" - 610 mm	24" - 610 mm	1 1/4" - 32 mm
RO-WS-S3014-GE	30" - 762 mm	14" - 356 mm	1 1/4" - 32 mm
RO-WS-S3018-GE	30" - 762 mm	18" - 457 mm	1 1/4" - 32 mm
RO-WS-S3024-GE	30" - 762 mm	24" - 610 mm	1 1/4" - 32 mm
RO-WS-S3614-GE	36" - 914 mm	14" - 356 mm	1 1/4" - 32 mm
RO-WS-S3618-GE	36" - 914 mm	18" - 457 mm	1 1/4" - 32 mm
RO-WS-S3624-GE	36" - 914 mm	24" - 610 mm	1 1/4" - 32 mm
RO-WS-S4214-GE	42" - 1067 mm	14" - 356 mm	1 1/4" - 32 mm
RO-WS-S4218-GE	42" - 1067 mm	18" - 457 mm	1 1/4" - 32 mm
RO-WS-S4224-GE	42" - 1067 mm	24" - 610 mm	1 1/4" - 32 mm
RO-WS-S4814-GE	48" - 1219 mm	14" - 356 mm	1 1/4" - 32 mm
RO-WS-S4818-GE	48" - 1219 mm	18" - 457 mm	1 1/4" - 32 mm
RO-WS-S4824-GE	48" - 1219 mm	24" - 610 mm	1 1/4" - 32 mm
RO-WS-S6014-GE	60" - 1524 mm	14" - 356 mm	1 1/4" - 32 mm
RO-WS-S6018-GE	60" - 1524 mm	18" - 457 mm	1 1/4" - 32 mm
RO-WS-S6024-GE	60" - 1524 mm	24" - 610 mm	1 1/4" - 32 mm
RO-WS-S7214-GE	72" - 1829 mm	14" - 356 mm	1 1/4" - 32 mm
RO-WS-S7218-GE	72" - 1829 mm	18" - 457 mm	1 1/4" - 32 mm
RO-WS-S7224-GE	72" - 1829 mm	24" - 610 mm	1 1/4" - 32 mm

ACCESSORIES



RO-ACC-WS-HOOK-GE
S-Hook for Wire Shelving,
Green Epoxy



RO-ACC-WS-CAST5
5" Caster without Break,
Round Stem for Wire
Shelving



RO-ACC-WS-CAST5B
5" Caster with Break,
Round Stem for Wire
Shelving



RO-ACC-WS-FOOT
Levelling Foot for Wire
Shelving



RO-ACC-WS-4CLIP
Set of 4 Clips for Wire
Shelving, Black

RO-RACK PAN RACK



RO-RACK-1218

FEATURES

- Made of 1" (25 mm) aluminum tube – 18 gauge
- Welded aluminum slides
- 12 to 20 baking trays or dish bins capacity
- Equipped with swivel polyurethane casters (2 with brakes)
- Quick and easy to assemble
- Certified to NSF/ANSI 2 standards



MODELS

MODELS	Width (W)	Depth (D)	Height (H)	Rack spacing (S)	Capacity
RO-RACK-1216-ALU	18 1/4" – 476 mm	26" – 660 mm	69" – 1754 mm	5" – 127 mm	12 bins 16 x 26"
RO-RACK-1218-ALU	20 1/4" – 514 mm	26" – 660 mm	69" – 1754 mm	5" – 127 mm	12 pans 18 x 26"
RO-RACK-2018-ALU	20 1/4" – 514 mm	26" – 660 mm	69" – 1754 mm	3" – 76 mm	20 pans 18 x 26"

WALL SHELVES



Keep small appliances, utensils, or dishes close at hand with commercial kitchen wall shelves. Like other Rosko branded equipment, they are made of quality stainless steel for durability and easy cleaning. The shelves are meant for wall installation, making them the wise choice to maximize all spaces.

- Entirely made of stainless steel;
- Many sizes available;
- Installation kit included.

RO-WMS-2412
RO-WMS-3012
RO-WMS-3612
RO-WMS-4812
RO-WMS-6012
RO-WMS-7212
RO-WMS-8412
RO-WMS-9612

RO-WMMS-1824
RO-WMMS-2424



RO-WMS

WALL MOUNT SHELF



RO-WMS-4812

MODELS	Width (W)	Depth (D)	Number of supports	Height of supports
RO-WMS-2412	24" – 610 mm	12" – 305 mm	2	10" – 254 mm
RO-WMS-3012	30" – 762 mm	12" – 305 mm	2	10" – 254 mm
RO-WMS-3612	36" – 914 mm	12" – 305 mm	2	10" – 254 mm
RO-WMS-4812	48" – 1219 mm	12" – 305 mm	2	10" – 254 mm
RO-WMS-6012	60" – 1524 mm	12" – 305 mm	2	10" – 254 mm
RO-WMS-7212	72" – 1828 mm	12" – 305 mm	3	10" – 254 mm
RO-WMS-8412	84" – 2134 mm	12" – 305 mm	3	10" – 254 mm
RO-WMS-9612	96" – 2438 mm	12" – 305 mm	3	10" – 254 mm

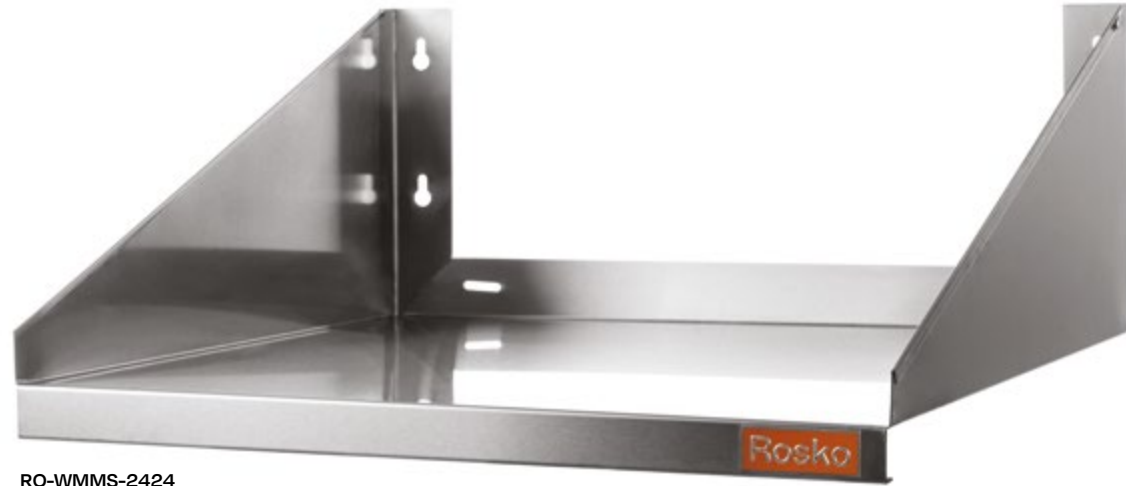
FEATURES

- Made of grade 430 stainless steel - 18 gauge
- Triangular supports assembled with studs
- A central support on 72" (1828 mm) to 96" (2438 mm) wide models
- Quick and easy assembly and installation
- Certified to NSF/ANSI 2 standards



RO-WMMS

WALL MOUNT MICROWAVE SHELF



RO-WMMS-2424

MODELS

MODELS	Width (W)	Depth (D)	Number of supports	Height of supports
RO-WMMS-1824	18" - 457 mm	24" - 610 mm	2	10" - 254 mm
RO-WMMS-2424	24" - 610 mm	24" - 610 mm	2	10" - 254 mm

FEATURES

- Made of grade 304 stainless steel - 18 gauge
- Two (2) models available
- Easy installation and adjustment
- One (1) year limited warranty on parts and labor
- Certified to NSF/ANSI 2 standards



INDEX

MODELS	DESCRIPTION	PACKAGING WEIGHT	PACKAGING DIMENSIONS (W x D x H)
RO-WT-2424	Worktable, 24" X 24", Stainless Steel	34 lb – 15 kg	36 x 32 x 4" 914 x 813 x 102 mm
RO-WT-3024	Worktable, 30" X 24", Stainless Steel	39 lb – 18 kg	36 x 32 x 4" 914 x 813 x 102 mm
RO-WT-3624	Worktable, 36" X 24", Stainless Steel	44 lb – 20 kg	38 x 32 x 4" 965 x 813 x 102 mm
RO-WT-4824	Worktable, 48" X 24", Stainless Steel	52 lb – 24 kg	50 x 26 x 4" 1270 x 660 x 102 mm
RO-WT-6024	Worktable, 60" X 24", Stainless Steel	63 lb – 29 kg	62 x 26 x 4" 1575 x 660 x 102 mm
RO-WT-7224	Worktable, 72" X 24", Stainless Steel	73 lb – 33 kg	74 x 26 x 4" 1880 x 660 x 102 mm
RO-WT-8424	Worktable, 84" X 24", Stainless Steel	89 lb – 40 kg	86 x 26 x 4" 2184 x 660 x 102 mm
RO-WT-9624	Worktable, 96" X 24", Stainless Steel	98 lb – 44 kg	98 x 26 x 4" 2489 x 660 x 102 mm
RO-WT-3030	Worktable, 30" X 30", Stainless Steel	44 lb – 20 kg	36 x 36 x 4" 914 x 914 x 102 mm
RO-WT-3630	Worktable, 36" X 30", Stainless Steel	49 lb – 22 kg	38 x 32 x 4" 965 x 813 x 102 mm
RO-WT-4830	Worktable, 48" X 30", Stainless Steel	60 lb – 27 kg	50 x 32 x 4" 1270 x 813 x 102 mm
RO-WT-6030	Worktable, 60" X 30", Stainless Steel	71 lb – 32 kg	62 x 32 x 4" 1575 x 813 x 102 mm
RO-WT-7230	Worktable, 72" X 30", Stainless Steel	84 lb – 38 kg	74 x 32 x 4" 1880 x 813 x 102 mm
RO-WT-8430	Worktable, 84" X 30", Stainless Steel	101 lb – 46 kg	86 x 32 x 4" 2184 x 813 x 102 mm
RO-WT-9630	Worktable, 96" X 30", Stainless Steel	113 lb – 51 kg	98 x 32 x 4" 2489 x 813 x 102 mm
RO-ES-2424	Equipment Stand, 24" X 24", Stainless Steel	33 lb – 15 kg	26 x 26 x 5" 660 x 660 x 127 mm
RO-ES-2430	Equipment Stand, 24" X 30", Stainless Steel	38 lb – 17 kg	26 x 32 x 5" 660 x 813 x 127 mm
RO-ES-3630	Equipment Stand, 36" X 30", Stainless Steel	50 lb – 23 kg	38 x 32 x 5" 965 x 813 x 127 mm
RO-ES-4830	Equipment Stand, 48" X 30", Stainless Steel	62 lb – 28 kg	51 x 32 x 5" 1295 x 813 x 127 mm
RO-OSD-3612	Double Shelf, 36" X 12", Stainless Steel	24 lb – 11 kg	38 x 14 x 4" 965 x 356 x 102 mm
RO-OSD-4812	Double Shelf, 48" X 12", Stainless Steel	29 lb – 13 kg	50 x 14 x 4" 1270 x 356 x 102 mm
RO-OSD-6012	Double Shelf, 60" X 12", Stainless Steel	34 lb – 15 kg	62 x 14 x 4" 1575 x 356 x 102 mm
RO-OSD-7212	Double Shelf, 72" X 12", Stainless Steel	39 lb – 18 kg	74 x 14 x 4" 1880 x 356 x 102 mm
RO-WS-S2414-GE	Shelf for Wire Shelving, 24" X 14", Green Epoxy (Box of 4)	35 lb – 16 kg	24½ x 14½ x 7" 622 x 368 x 178 mm
RO-WS-S2418-GE	Shelf for Wire Shelving, 24" X 18", Green Epoxy (Box of 4)	39 lb – 18 kg	24½ x 18½ x 7" 622 x 470 x 178 mm
RO-WS-S2424-GE	Shelf for Wire Shelving, 24" X 24", Green Epoxy (Box of 4)	44 lb – 20 kg	24½ x 24½ x 7" 622 x 622 x 178 mm
RO-WS-S3014-GE	Shelf for Wire Shelving, 30" X 14", Green Epoxy (Box of 4)	41 lb – 19 kg	30½ x 14½ x 7" 775 x 368 x 178 mm
RO-WS-S3018-GE	Shelf for Wire Shelving, 30" X 18", Green Epoxy (Box of 4)	45 lb – 20 kg	30½ x 18½ x 7" 775 x 470 x 178 mm

MODELS	DESCRIPTION	PACKAGING WEIGHT	PACKAGING DIMENSIONS (W x D x H)
RO-WS-S3024-GE	Shelf for Wire Shelving, 30" X 24", Green Epoxy (Box of 4)	51 lb – 23 kg	30½ x 24½ x 7" 775 x 622 x 178 mm
RO-WS-S3614-GE	Shelf for Wire Shelving, 36" X 14", Green Epoxy (Box of 4)	47 lb – 21 kg	36½ x 14½ x 7" 927 x 368 x 178 mm
RO-WS-S3618-GE	Shelf for Wire Shelving, 36" X 18", Green Epoxy (Box of 4)	51 lb – 23 kg	36½ x 18½ x 7" 927 x 470 x 178 mm
RO-WS-S3624-GE	Shelf for Wire Shelving, 36" X 24", Green Epoxy (Box of 4)	58 lb – 26 kg	36½ x 24½ x 7" 927 x 622 x 178 mm
RO-WS-S4214-GE	Shelf for Wire Shelving, 42" X 14", Green Epoxy (Box of 4)	52 lb – 23 kg	42½ x 14½ x 7" 1080 x 368 x 178 mm
RO-WS-S4218-GE	Shelf for Wire Shelving, 42" X 18", Green Epoxy (Box of 4)	56 lb – 25 kg	42½ x 18½ x 7" 1080 x 470 x 178 mm
RO-WS-S4224-GE	Shelf for Wire Shelving, 42" X 24", Green Epoxy (Box of 4)	64 lb – 29 kg	42½ x 24½ x 7" 1080 x 622 x 178 mm
RO-WS-S4814-GE	Shelf for Wire Shelving, 48" X 14", Green Epoxy (Box of 4)	58 lb – 26 kg	48½ x 14½ x 7" 1232 x 368 x 178 mm
RO-WS-S4818-GE	Shelf for Wire Shelving, 48" X 18", Green Epoxy (Box of 4)	64 lb – 29 kg	48½ x 18½ x 7" 1232 x 470 x 178 mm
RO-WS-S4824-GE	Shelf for Wire Shelving, 48" X 24", Green Epoxy (Box of 4)	72 lb – 33 kg	48½ x 24½ x 7" 1232 x 622 x 178 mm
RO-WS-S6014-GE	Shelf for Wire Shelving, 60" X 14", Green Epoxy (Box of 2)	37 lb – 17 kg	60½ x 14½ x 4" 1537 x 368 x 102 mm
RO-WS-S6018-GE	Shelf for Wire Shelving, 60" X 18", Green Epoxy (Box of 2)	40 lb – 18 kg	60½ x 18½ x 4" 1537 x 470 x 102 mm
RO-WS-S6024-GE	Shelf for Wire Shelving, 60" X 24", Green Epoxy (Box of 2)	46 lb – 21 kg	60½ x 24½ x 4" 1537 x 622 x 102 mm
RO-WS-S7214-GE	Shelf for Wire Shelving, 72" X 14", Green Epoxy (Box of 2)	44 lb – 20 kg	72½ x 14½ x 4" 1842 x 368 x 102 mm
RO-WS-S7218-GE	Shelf for Wire Shelving, 72" X 18", Green Epoxy (Box of 2)	48 lb – 21 kg	72½ x 18½ x 4" 1842 x 470 x 102 mm
RO-WS-S7224-GE	Shelf for Wire Shelving, 72" X 24", Green Epoxy (Box of 2)	54 lb – 24 kg	72½ x 24½ x 4" 1842 x 622 x 102 mm
RO-WS-P54-GE	Post for Wire Shelving, 54", Green Epoxy (Box of 4)	12 lb – 5 kg	4½ x 1½ x 54" 114 x 38 x 1372 mm
RO-WS-P64-GE	Post for Wire Shelving, 64", Green Epoxy (Box of 4)	15 lb – 7 kg	4½ x 1½ x 64" 114 x 38 x 1626 mm
RO-WS-P74-GE	Post for Wire Shelving, 74", Green Epoxy (Box of 4)	17 lb – 8 kg	4½ x 1½ x 74" 114 x 38 x 1880 mm
RO-WS-P86-GE	Post for Wire Shelving, 86", Green Epoxy (Box of 4)	20 lb – 9 kg	4½ x 1½ x 86" 114 x 38 x 2184 mm
RO-WMS-2412	Wall Mount Shelf, 24" X 12", Stainless Steel	8 lb – 4 kg	26 x 14 x 4" 660 x 356 x 102 mm
RO-WMS-3012	Wall Mount Shelf, 30" X 12", Stainless Steel	9 lb – 4 kg	32 x 14 x 4" 813 x 356 x 102 mm
RO-WMS-3612	Wall Mount Shelf, 36" X 12", Stainless Steel	11 lb – 5 kg	38 x 14 x 4" 965 x 356 x 102 mm
RO-WMS-4812	Wall Mount Shelf, 48" X 12", Stainless Steel	14 lb – 6 kg	50 x 14 x 4" 1270 x 356 x 102 mm
RO-WMS-6012	Wall Mount Shelf, 60" X 12", Stainless Steel	16 lb – 7 kg	62 x 14 x 4" 1575 x 356 x 102 mm
RO-WMS-7212	Wall Mount Shelf, 72" X 12", Stainless Steel	19 lb – 9 kg	74 x 14 x 4" 1880 x 356 x 102 mm
RO-WMS-8412	Wall Mount Shelf, 84" X 12", Stainless Steel	23 lb – 10 kg	86 x 14 x 4" 2184 x 356 x 102 mm
RO-WMS-9612	Wall Mount Shelf, 96" X 12", Stainless Steel	25 lb – 11 kg	98 x 14 x 4" 2489 x 356 x 102 mm

WARRANTY

MODELS	DESCRIPTION	PACKAGING WEIGHT	PACKAGING DIMENSIONS (W x D x H)
RO-WMMS-1824	Wall Mount Microwave Shelf, 18" X 24", Stainless Steel	12 lb - 5,4 kg	20 x 25 x 11" 508 x 635 x 279 mm
RO-WMMS-2424	Wall Mount Microwave Shelf, 24" X 24", Stainless Steel	15 lb - 6,8 kg	25 x 25 x 11" 635 x 635 x 279 mm
RO-RACK-1216-ALU	12 Pan Rack 16" with 5" Spacing, Aluminum	26 lb - 12 kg	72 x 27 1/2 x 4" 1829 x 699 x 102 mm
RO-RACK-1218-ALU	12 Pan Rack 18" with 5" Spacing, Aluminum	27 lb - 12 kg	72 x 27 1/2 x 4" 1829 x 699 x 102 mm
RO-RACK-2018-ALU	20 Pan Rack 18" with 3" Spacing, Aluminum	31 lb - 14 kg	72 x 27 1/2 x 4" 1829 x 699 x 102 mm
RO-ACC-WTD-2418	Drawer 28" Wide for Worktable 24" Deep, Inside Pan 24" X 18"	37 lb - 17 kg	31 x 24 x 8" 787 x 610 x 203 mm
RO-ACC-WTD-3018	Drawer 34" Wide for Worktable 24" Deep, Inside Pan 30" X 18"	40 lb - 18 kg	37 x 24 x 8" 940 x 610 x 203 mm
RO-ACC-WTD-1824	Drawer 22" Wide for Worktable 30" Deep, Inside Pan 18" X 24"	36 lb - 16 kg	25 x 30 x 8" 635 x 762 x 203 mm
RO-ACC-WTD-2424	Drawer 28" Wide for Worktable 30" Deep, Inside Pan 24" X 24"	42 lb - 19 kg	31 x 30 x 8" 787 x 762 x 203 mm
RO-ACC-WS-HOOK-GE	S-Hook for Wire Shelving, Green Epoxy	-	-
RO-ACC-WS-FOOT	Levelling Foot for Wire Shelving	-	-
RO-ACC-WS-CAST5	5" Caster without Break, Round Stem for Wire Shelving	-	-
RO-ACC-WS-CAST5B	5" Caster with Break, Round Stem for Wire Shelving	-	-
RO-ACC-WS-4CLIP	Set of 4 Clips for Wire Shelving, Black	-	-

GENERALITIES

Rosko equipment is designed and certified for commercial use only. Rosko assumes no responsibility or liability of any kind for any part, labor, or component failure, or any property damage or personal injury resulting from a non-commercial installation or use, or for residential purposes, including risk of death.

Before placing a service call, the original purchaser must verify that the problem is not the result of an improper installation, insufficient power supply, incorrect setting, or wrong use. The costs incurred by these examples are not covered by this Limited Warranty and are at the sole expense of the customer.

WASHING EQUIPMENT AND FURNITURE

ONE (1) YEAR LIMITED WARRANTY ON PARTS AND LABOUR

Rosko warrants to the original purchaser that all new washing equipment and furniture will be free from defects in materials or workmanship, under normal use and proper preventive maintenance as recommended by Rosko, for a period of one (1) year from date of invoice or no later than 15 months from date of shipment, whichever comes first. Rosko will repair or replace the defective part with an equivalent or similar part according to the conditions and rates set by Rosko. Any warranty service requests must first be addressed to the Rosko Customer Service Department, which will issue a pre-authorization number, if applicable.

QUALITY ACCESSIBLE TO ALL

Rosko
JULIEN

1 866 901-5624
customerservice@rosko-julien.ca

955, rue Lachance, Québec (Québec)
Canada G1P 2H3

rosko-julien.ca

RO-FURNITURE-CATALOG-EN
A-2022-05-01
996313715