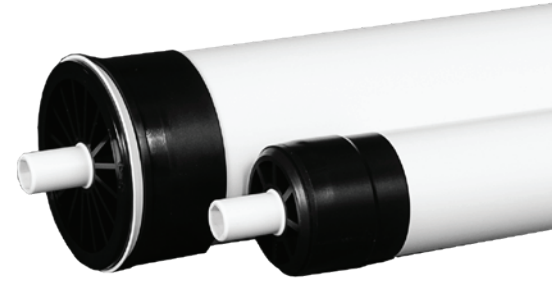


HR3 – SERIES MEMBRANE ELEMENTS

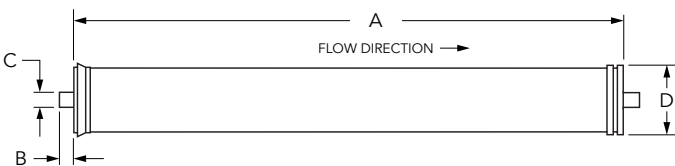
HR3 – Series Reverse Osmosis Membrane Elements offer the highest salt rejection rates at 99.5% and up to 2,200 gallons per day. Protected with a hard ABS shell, **HR3 – Series RO Membranes** continue to be a top choice amongst equipment operators for high salinity applications. With an operating pressure of 225 psi, **HR3 – Series RO Membranes** are ideal for municipal water or deionization feed applications.



OPERATING LIMITS

| | |
|---|-------------------------------|
| Membrane Type | Polyamide Thin-Film Composite |
| Maximum Operating Temperature (°F / °C) | 113 / 45 |
| Maximum Operating Pressure (psi / bar) | 600 / 41 |
| pH Range, Continuous Operation ^A | 2-11 |
| pH Range, Short Term Cleaning (30 Min.) | 1-13 |
| Maximum Feed Silt Density Index (SDI) | 5 |
| Chlorine / Chloramine Tolerance (ppm) | 0 |
| Maximum Feed Flow Rate (gpm) | 2.5" = 6, 4.0" = 14 |

A. Maximum temperature for continuous operations above pH10 is 95°F / 35°C.



SPECIFICATIONS

| Description | Applied Pressure (psi / bar) | Permeate Flow Rate (gpd / M ³ /d) | Nominal Salt Rejection % |
|-------------|------------------------------|--|--------------------------|
| HR3 – 2514 | 225 / 15.51 | 150 / 0.57 | 99.50 |
| HR3 – 2521 | 225 / 15.51 | 250 / 0.95 | 99.50 |
| HR3 – 2540 | 225 / 15.51 | 650 / 2.46 | 99.50 |
| HR3 – 4014 | 225 / 15.51 | 400 / 1.51 | 99.50 |
| HR3 – 4021 | 225 / 15.51 | 900 / 3.41 | 99.50 |
| HR3 – 4040 | 225 / 15.51 | 2200 / 8.33 | 99.50 |

Warranty Evaluation Test Conditions: Permeate flow and salt rejection based on the following test conditions: 550 ppm, filtered and dechlorinated municipal tap water, 77°F / 25°C, 8% recovery 2514, 2521, 4014, 4021, and 15% recovery 2540, 4040 at the specified operating pressure. Minimum salt rejection is 97%. Permeate flows for warranty evaluation may vary +/-20%.

| Description | DIMENSIONS (IN / MM) | | | |
|-------------|----------------------|--------------|--------------|---------------|
| | A | B | C | D |
| HR3 – 2514 | 14 / 355.60 | 1.10 / 27.94 | 0.75 / 19.05 | 2.40 / 60.96 |
| HR3 – 2521 | 21 / 533.40 | 1.10 / 27.94 | 0.75 / 19.05 | 2.40 / 60.96 |
| HR3 – 2540 | 40 / 1016.00 | 1.10 / 27.94 | 0.75 / 19.05 | 2.40 / 60.96 |
| HR3 – 4014 | 14 / 355.60 | 1.10 / 27.94 | 0.75 / 19.05 | 3.95 / 100.30 |
| HR3 – 4021 | 21 / 533.40 | 1.10 / 27.94 | 0.75 / 19.05 | 3.95 / 100.30 |
| HR3 – 4040 | 40 / 1016.00 | 1.10 / 27.94 | 0.75 / 19.05 | 3.95 / 100.30 |

Note: All 2514, 2521 and 2540 elements fit nominal 2.50" I.D. membrane housings and all 4014, 4021 and 4040 elements fit nominal 4.00" I.D. membrane housings.

Important: Proper start-up of reverse osmosis water treatment systems is essential to prepare the membranes for operating service and to prevent membrane damage due to overfeeding or hydraulic shock. Before initiating system start-up procedures, membrane pretreatment, loading of the membrane elements, instrument calibration and other system checks should be completed. Avoid any abrupt pressure or cross-flow variations on the spiral elements during start-up, shutdown, cleaning or other sequences to prevent possible membrane damage. During start-up, a gradual change from a standstill to operating state is recommended as follows:

- Feed pressure should be increased gradually over a 30-60 second time frame.
- Cross-flow velocity at set operating point should be achieved gradually over 15-20 seconds.
- Permeate obtained from first hour of operation should be discarded.
- Maximum pressure drop across an entire single membrane pressure vessel (housing) is 15 psi / 1.03 bar.
- Avoid static permeate-side backpressure at all times.

Under certain conditions, the presence of free chlorine, chloramines and other oxidizing agents will cause premature membrane failure. Since oxidation damage is not covered under warranty, the manufacturer recommends removing all oxidizing agents by pretreatment prior to membrane exposure. Please contact the manufacturer or your supplier for more information.

Do not use this initial permeate for drinking water or food preparation. Keep elements moist at all times after initial wetting. To prevent biological growth during prolonged system shutdowns, it is recommended that membrane elements be immersed in a preservative solution. Rinse out the preservative before use. For membrane warranty details, please contact the manufacturer or your supplier for more information.

If operating limits and guidelines given in this product specification sheet are not strictly followed, the warranty will be null and void. The customer is fully responsible for the effects of incompatible chemicals and lubricants on elements. Use of any such chemicals or lubricants will void the warranty. These membranes may be subject to drinking water application restrictions in some countries: please check the application status before use and sale. The use of this product in and of itself does not necessarily guarantee the removal of cysts and pathogens from water. Effective cyst and pathogen reduction is dependent on the complete system design and on the operation and maintenance of the system.

No freedom from infringement of any patent owned by the manufacturer or others is to be inferred. Because use conditions and applicable laws may differ from one location to another and may change with time, customer is responsible for determining whether products and the information in this document are appropriate for customer's use and for ensuring that customer's workplace and disposal practices are in compliance with applicable laws and other governmental enactments. The claims made may not have been approved for use in all countries. The manufacturer assumes no obligation or liability for the information in this document. AXEON reserves the right to update this information periodically for the purposes of quality and accuracy. AXEON reserves the right to update this information periodically for the purposes of quality and accuracy. **NO WARRANTIES ARE GIVEN; ALL IMPLIED WARRANTIES OF MERCHANTABILITY OR FITNESS FOR A PARTICULAR PURPOSE ARE EXPRESSLY EXCLUDED.**