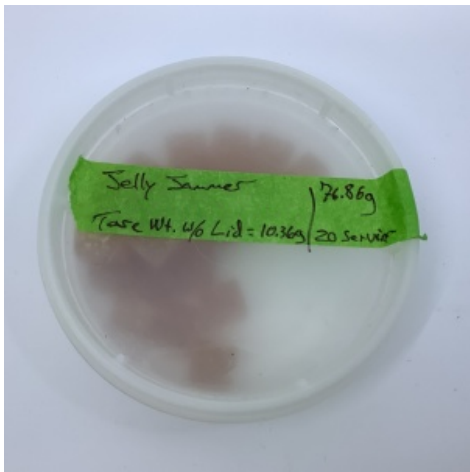


Certificate of Analysis

Produced: Mar 20, 2025

Sample: Jelly Jammer (Edible Solid) • Client: Rose Los Angeles Inc



Matrix: Edible Solid
Sample ID: ICC-250319-03-002
Collected on: Mar 19, 2025
Received on: Mar 19, 2025
Sample Size:
Received By: Stephanie Paule
Package Size: 76.81 g
Serving Size: 3.84 g

Tests Taken

Potency

Cannabinoid Overview

Total THC:	2.98 mg/srv
Total CBD:	0.484 mg/srv
Total Cannabinoids:	3.73 mg/srv
Sum of Cannabinoids:	3.73 mg/srv

POT-INST-005: POT-INST-005: Potency • Mar 20, 2025

Analyte	Amt (mg/srv)	Amt (mg/pkg)	Amt (%)	Amt (mg/g)	LOD/LOQ (mg/g)	Analyte	Amt (mg/srv)	Amt (mg/pkg)	Amt (%)	Amt (mg/g)	LOD/LOQ (mg/g)
CBC	0.0925	1.85	0.00241	0.0241	0.00304/0.00912	CBT			ND	ND	0.00132/0.00461
CBD	0.484	9.68	0.0126	0.126	0.000929/0.00461	Δ ⁸ -THC			ND	ND	0.000745/0.00461
CBDA			ND	ND	0.00222/0.00667	Δ ⁹ -THC	2.98	59.5	0.0775	0.775	0.00123/0.00461
CBDV			ND	ND	0.000737/0.00461	THCA			ND	ND	0.00169/0.00507
CBG	0.156	3.13	0.00407	0.0407	0.00105/0.00461	THCV	0.0201	0.402	0.000524	0.00524	0.000569/0.00461
CBGA			ND	ND	0.00164/0.00492	Total THC**	2.98	59.5	0.0775	0.775	
CBL			ND	ND	0.000725/0.00461	Total CBD**	0.484	9.68	0.0126	0.126	
CBN			ND	ND	0.00105/0.00461						

** Total THC = Delta-10-THC + Delta-8-THC + (Delta-8-THCA x 0.877) + Delta-9-THC + THC-O-acetate + (THCA x 0.877)
** Total CBD = CBD + (CBDA x 0.877)
NR= Not Reported, ND= Not Detected, *Reported by Dry Mass*; *analytical instrumentation used Cannabinoids: UHPLC-DAD, Moisture: Mass by Drying, Water Activity: Water Activity Meter, Foreign: Microscope* *Density tested at a temperature range between 19-24 °C, *Water Activity tested at a humidity range between 0-90% Relative Humidity. All OA samples are sampled by the client, All California State Compliant samples sampled using SAMPL-SOP-001.
Compliance requirements for this test are taken from California CDPH Hemp regulations.