



ELEVATE THE ATMOSPHERE IN ANY ROOM



**HIGH EFFICIENCY, UP TO
25.5 SEER2 / 10.2 HSPF2**



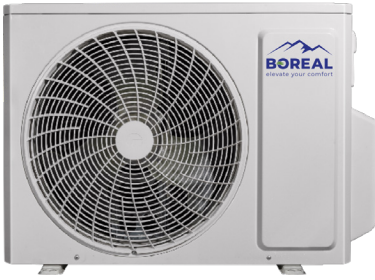
**COOLING DOWN TO:
-20°F
HEATING DOWN TO:
-22°F**



**SMART HOME
INTEGRATION**



- Smart Home Integration
- Ultra heat down to -22F
- Ultra cool down to -20F
- 7 fan speeds + Turbo
- Intelligent defrost
- Low voltage start-up
- Automatic voltage adaptation
- Intelligent preheating
- Easier to Clean/Change Filters
- Optimized Airflow Design
- Timer function
- Remote & wired controller options
- I-Feel function
- Swing louver control
- Privacy lock mode



KULA		KULA09HPJ1IB**	KULA12HPJ1IB**	KULA18HPJ1IB**	KULA24HPJ1IB**
System Type					
SYSTEM PERFORMANCE					
OUTDOOR UNIT		KULA09HPJ1OB	KULA12HPJ1OB	KULA18HPJ1OB	KULA24HPJ1OB
Cooling Temperature Range	°F	-20 - 122	-20 - 122	-20 - 122	-20 - 122
Heating Temperature Range	°F	-22 - 86	-22 - 86	-22 - 86	-22 - 86
Refrigerant Type					
Compressor Type					
Sound Pressure Level	dB(A)	52	52	59	62
External Dimensions (W x H x D)	in	31-5/8 x 21-7/8 x 13-13/16	31-5/8 x 21-7/8 x 13-13/16	37-3/4 x 26 x 15-7/8	39-3/8 x 29-3/8 x 16-13/16
Package Dimension (W x H x D)	in	34-3/8 x 24-7/16 x 15-11/16	34-3/8 x 24-7/16 x 15-11/16	40-5/8 x 29-1/16 x 18	42-9/16 x 31-15/16 x 19-1/16
Weight (Net / Gross)	lbs	70.6 / 76.1	70.6 / 76.1	98.1 / 106.9	125.7 / 136.7
REFRIGERANT PIPING					
Refrigerant Charge - R410A	oz	35.3	42.3	54.7	60
Additional Charge	oz/ft	0.2	0.2	0.5	0.5
Line Set Size (Liquid - Gas) - Flared Connections	in	LINE SET SIZED BY INDOOR UNIT VALVE SIZE			
Pre-Charge Length	ft	25			
Pipe Length (Min / Max)	ft	10 / 49	10 / 66	10 / 82	10 / 131
Max. Pipe Elevation	ft	33	33	33	82
ELECTRICAL					
Power Supply		208-230V / 1Ph / 60Hz			
Voltage Range (Min - Max)	VAC	187 - 253			
Rated Current - Cooling	A	4.7	6.3	11.5	15.3
Rated Current - Heating	A	6	6.7	11.5	13.5
MCA	A	10	10	14	16
MOCP	A	15	15	20	25
Main Power Wire Size	AWG	Per Local Code			
Communication Wire Size	AWG	14 / 4			
LIMITED WARRANTY		5 Years Parts, 7 Years Compressor – Residential & Commercial			

4 INDOOR UNITS TO CHOOSE

- Wall Mount
- Ceiling Cassette
- Universal Floor/Ceiling
- Slim Duct (High Static)

WALL MOUNT

Slim compact design hangs inconspicuously on the wall and mixes with most interior designs. Built-in WIFI technology allows local to long distance control from smartphones with the smart app.



MODEL		KULA09HPJ1A	KULA12HPJ1A	KULA18HPJ1A	KULA24HPJ1A
System Type					
SYSTEM PERFORMANCE					
Cooling Capacity (Min-Max)	Btu/h	9100 (1535 - 10747)	12000 (3071 - 14098)	18000 (5118 - 21154)	22000 (8870 - 28000)
Heating Capacity (Min-Max)	Btu/h	10500 (3412 - 14672)	12000 (3071 - 15501)	18000 (5118 - 21154)	24000 (7200 - 30708)
SEER2 / EER2		25.5 / 14.7	24 / 12.5	23.5 / 13	24.5 / 13.1
HSPF2 / COP		10.2 / 3.9	9 / 3.8	9 / 3.8	9.5 / 3.8
Energy Star®		YES	YES	YES	YES
INDOOR UNIT DATA		KULA09HPJ1A	KULA12HPJ1A	KULA18HPJ1A	KULA24HPJ1A
Air Flow (Min-Max)	CFM	159 - 353	182 - 424	353 - 618	412 - 677
Sound Pressure Level (Min-Max)	dB(A)	25 - 40	27 - 43	29 - 49	34 - 52
Dehumidification	pt/hr	1.69	2.96	3.80	5.07
External Dimensions (W x H x D)	in	32-1/2 x 11-9/16 x 7-3/4	32-1/2 x 11-9/16 x 7-3/4	38-11/16 x 12-1/4 x 8-3/4	42-3/8 x 13-1/8 x 9-11/16
Package Dimension (W x H x D)	in	34-7/16 x 14-3/8 x 10-9/16	34-7/16 x 14-3/8 x 10-9/16	41-1/8 x 15-3/16 x 11-3/4	44-5/8 x 16-5/16 x 13-1/8
Weight (Net / Gross)	lbs	20.9 / 25.4	20.9 / 25.4	28.7 / 35.3	35.3 / 41.9
REFRIGERANT PIPING					
Line Set Sized by Indoor Unit (Liquid - Gas)	in	1/4 - 3/8	1/4 - 1/2	1/4 - 5/8	1/4 - 5/8
ELECTRICAL					
Power Supply	208-230V / 1Ph / 60Hz (Powered by the Outdoor Unit)				
LIMITED WARRANTY		5 Years Parts, 7 Years Compressor – Residential & Commercial			

CEILING CASSETTE

Suitable for any room; installs easily in suspended ceilings.



MODEL		BCAS12HPJ1CA	BCAS18HPJ1CA	BCAS24HPJ1CA
System Type		HEAT PUMP		
SYSTEM PERFORMANCE				
Cooling Capacity - Nominal	Btu/h	12000	14400	22800
Heating Capacity - Nominal	Btu/h	13000	16000	27400
SEER2 / EER2		24 / 12.5	19 / 10.3	21 / 13.1
HSPF2 / COP		8.5 / 4	9.5 / 3.3	9.5 / 3.6
Energy Star®		YES	NO	YES
INDOOR UNIT DATA		BCAS12HPJ1CA	BCAS18HPJ1CA	BCAS24HPJ1CA
Air Flow (Min-Max)	CFM	265 - 383	265 - 418	518 - 753
Sound Pressure Level (Min - Max)	dB(A)	34 - 44	35 - 47	36 - 47
Dehumidification	pt/hr	3.0	3.8	5.3
External Dimensions (W x H x D)	in	23-1/2 x 9-1/2 x 23-1/2	23-1/2 x 9-1/2 x 23-1/2	33 x 9-1/2 x 33
Package Dimension (W x H x D)	in	30-1/2 x 11-1/4 x 29	30-1/2 x 11-1/4 x 29	37-1/2 x 12-1/8 x 37-1/2
Weight (Net / Gross)	lbs	55.0 / 66.2	56.3 / 67.3	72.8 / 88.2
CASSETTE GRILLE (Required)		BCASGRILLEBSM	BCASGRILLEBSM	BCASGRILLEBLG
Grille Dimension (W x H x D)	in	26-3/8 x 2 x 26-3/8	26-3/8 x 2 x 26-3/8	37-7/16 x 2-3/8 x 37-7/16
Package Dimension (W x H x D)	in	30 X 3-1/2 X 30	30 X 3-1/2 X 30	40-1/2 x 4-5/8 x 40-3/4
Weight (Net / Gross)	lbs	7.7 / 11.0	7.7 / 11.0	15.4 / 24.3
REFRIGERANT PIPING				
Line Set Sized by Indoor Unit (Liquid - Gas)	in	1/4 - 3/8	1/4 - 1/2	3/8 - 5/8
ELECTRICAL				
Power Supply	208-230V / 1Ph / 60Hz (Powered by the Outdoor Unit)			
LIMITED WARRANTY		5 Years Parts, 7 Years Compressor – Residential & Commercial		

UNIVERSAL FLOOR/CEILING

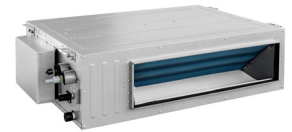
Slender, lightweight and attractive; ideal for limited spaces.
Suspend from the ceiling or mount low on the wall.



MODEL		BFLR09HPJ1FA	BFLR12HPJ1FA	BFLR18HPJ1FA	BFLR24HPJ1FA
System Type		HEAT PUMP			
SYSTEM PERFORMANCE					
Cooling Capacity - Nominal	Btu/h	8500	11900	17000	22800
Heating Capacity - Nominal	Btu/h	9500	13100	17800	27400
SEER2 / EER2		19 / 13	18.5 / 11.5	19 / 11.3	20 / 13.1
HSPF2 / COP		9.5 / 3.8	8.5 / 3.5	8.3 / 3.3	9 / 3.5
Energy Star®		YES	NO	NO	YES
INDOOR UNIT DATA					
Air Flow (Min-Max)	CFM	257 - 412	257 - 412	241 - 400	424 - 560
Sound Pressure Level (Min-Max)	dB(A)	26 - 38	26 - 38	27 - 38	27 - 38
Dehumidification	pt/hr	1.7	3.0	3.8	5.3
External Dimensions (W x H x D)	in	34-1/4 x 26-1/4 x 9-1/4	34-1/4 x 26-1/4 x 9-1/4	34-1/4 x 26-1/4 x 9-1/4	47-1/4 x 26-1/4 x 9-1/4
Package Dimension (W x H x D)	in	40-1/2 x 30-1/4 x 11-1/4	40-1/2 x 30-1/4 x 11-1/4	40-1/2 x 30-1/4 x 11-1/4	53-1/2 x 30-1/4 x 11-1/4
Weight (Net / Gross)	lbs	55.0 / 66.2	55.0 / 66.2	56.3 / 67.3	72.8 / 88.2
REFRIGERANT PIPING					
Line Set Sized by Indoor Unit (Liquid - Gas)	in	1/4 - 3/8	1/4 - 1/2	1/4 - 1/2	3/8 - 5/8
ELECTRICAL					
Power Supply		208-230V / 1Ph / 60Hz (Powered by the Outdoor Unit)			
LIMITED WARRANTY					
5 Years Parts, 7 Years Compressor – Residential & Commercial					

SLIM DUCT

Hides above a suspended ceiling or in closet space;
delivers air via ducting or suitable ceiling /wall grilles.



MODEL		BDUCT09HPJ1DA	BDUCT12HPJ1DA	BDUCT18HPJ1DA	BDUCT24HPJ1DA
System Type		HEAT PUMP			
SYSTEM PERFORMANCE					
Cooling Capacity - Nominal	Btu/h	9000	12000	18000	24000
Heating Capacity - Nominal	Btu/h	9500	13000	19000	27000
SEER2 / EER2		21 / 13.5	20 / 12.5	21 / 12.7	20 / 13.1
HSPF2 / COP		9 / 3.9	8.5 / 3.8	8.3 / 3.7	9 / 3.9
Energy Star®		YES	YES	YES	YES
INDOOR UNIT DATA					
Air Flow (Min-Max)	CFM	188 - 324	212 / 353	288 / 589	406 / 736
External Static Pressure	In W.c.	0.6	0.6	0.8	0.8
Sound Pressure Level (Min - Max)	dB(A)	25 - 36	26 - 38	26 - 39	28 - 42
Dehumidification	pt/hr	1.70	3.0	3.8	5.3
External Dimensions (W x H x D)	in	32-11/16 x 11-7/8 x 29-11/16	32-11/16 x 11-7/8 x 29-11/16	44-1/2 x 11-7/8 x 29-3/4	44-1/2 x 11-7/8 x 29-3/4
Package Dimension (W x H x D)	in	35-1/4 x 13-5/8 x 31-3/4	35-1/4 x 13-5/8 x 31-3/4	47-5/16 x 13-5/8 x 32	47-5/16 x 13-5/8 x 32
Weight (Net / Gross)	lbs	71 / 84	71 / 84	93 / 107	93 / 107
REFRIGERANT PIPING					
Line Set Sized by Indoor Unit (Liquid - Gas)	in	1/4 - 3/8	1/4 - 1/2	3/8 - 5/8	3/8 - 5/8
ELECTRICAL					
Power Supply		208-230V / 1Ph / 60Hz (Powered by the Outdoor Unit)			
LIMITED WARRANTY					
5 Years Parts, 7 Years Compressor – Residential & Commercial					



Version: 16 November 2023

Specifications are subject to change without notice. Manufacturer reserves the right to discontinue, or change at any time, specifications or designs without notice or without incurring obligations. ©2022 All rights reserved.

