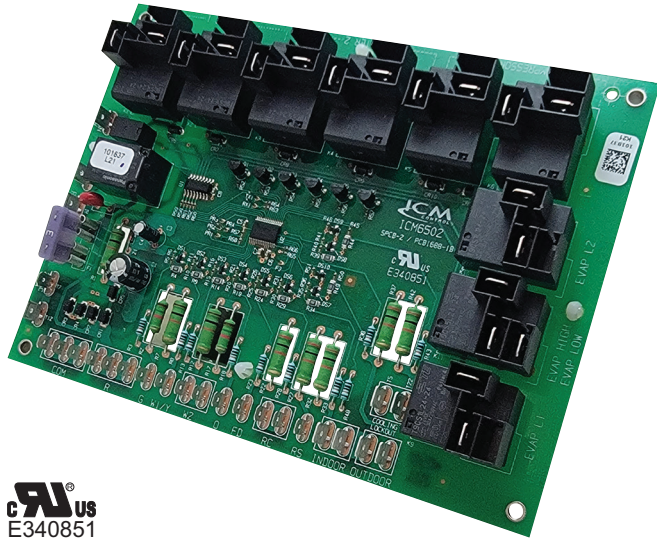




APPLICATIONS:

APPLIANCE | ELECTRICAL | HVAC/R | MARINE | POOL & SPA | RV



UL US
E340851

OVERVIEW

The **ICM6502** is a package unit heat pump control board designed to provide control of the compressor, reversing valve, auxiliary heat elements, the condenser and evaporator fans. The **ICM6502** also accepts inputs from a thermostat, indoor coil temperature, outdoor coil temperature, outdoor ambient temperature, indoor room temperature and a shutdown switch (front desk). The **ICM6502** provides compressor protection from short cycling with an anti-short cycle timer and low ambient lockout. A built in defrost cycle will protect the outdoor coil from freezing up when in heating mode.

REPLACES

- **ClimaTek/ First Company:** CB1025, CB1026

FEATURES

- ✓ Power interruption protection for the compressor
- ✓ Random Start delay
- ✓ 6-minute anti-short cycle timer protects compressor from rapid short cycling
- ✓ Two stages of heating (compressor & auxiliary back up heat)
- ✓ Low outdoor ambient compressor lockout (cooling/heating)
- ✓ Steady state cooling
- ✓ Low indoor coil temperature cooling shut down
- ✓ Low outdoor coil defrost lockout (defrost mode)
- ✓ Low indoor room ambient (RS) auxiliary heat mode
- ✓ Front Desk shut down switch input
- ✓ Speed up test mode reduces timing for field testing of the board
- ✓ **Dimensions:** 7.50" x 5.50"

SPECIFICATIONS

INPUT

- **L1 & L2:** 240 VAC system power connections
- **Control Voltage:** 24VAC
- **G:** Fan
- **W1/Y:** Heat/Cool - Stage 1
- **W2:** Auxiliary Heat - Stage 2
- **O:** Reversing Valve
- **FD:** Front Desk Switch
- **RS:** Indoor Room Sensor
- **Indoor:** Indoor Coil Sensor
- **Outdoor:** Outdoor Coil Sensor
- **Cooling Lockout:** Outdoor Ambient Sensor

OUTPUT

- **Compressor, K5, K6:** 10 FLA @240 Vac
- **Low Speed Evap. Fan, K9:** 2FLA @240 Vac
- **High Speed Evap. Fan, K11:** 2FLA @240 Vac
- **Auxiliary Heat Stage 1, K1, K2:** 21A Resistive @240 VAC
- **Auxiliary Heat Stage 2, K3, K4:** 21A Resistive @240VAC
- **Reversing Valve, K8:** 24 Vac 5VA
- **Condenser Fan, K7:** 24 Vac 1A Pilot Duty
- **Thermostat Outputs:** • R (24 Vac) • Com

Content and specifications on sell sheets subject to change without notice.