

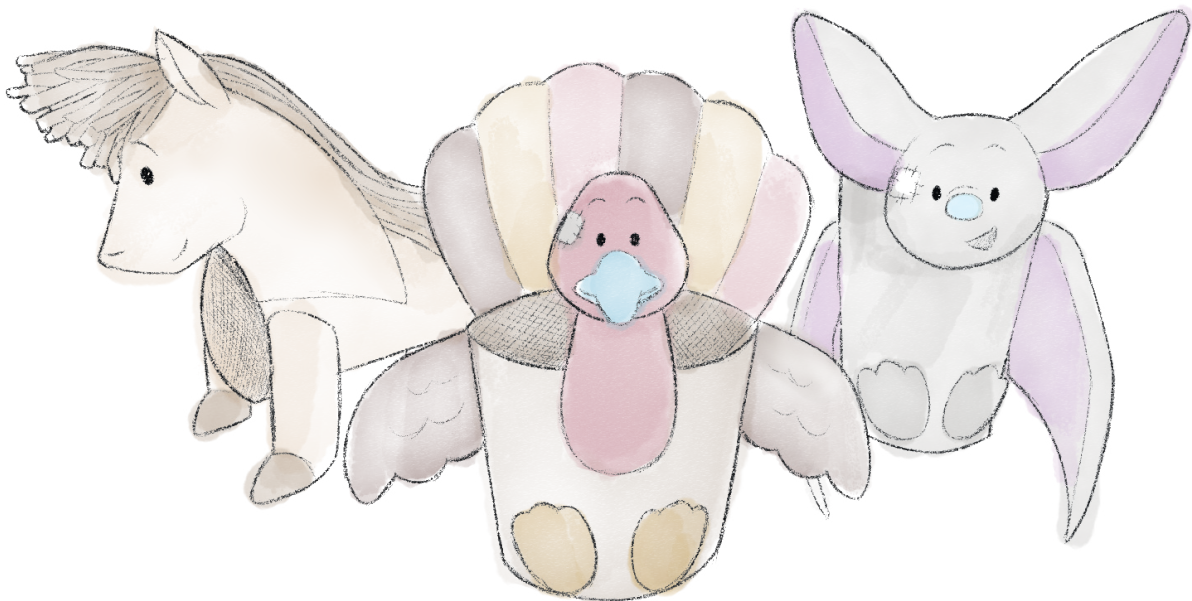


TUBE CRAFTS

THESE ADORABLE TUBE CRAFTS ARE MADE OF CARD AND PAPER. THEY FEATURE THREE LOVABLE FRIENDS FROM THE NEW AUTUMN RANGE: **DANCER THE SHETLAND PONY**, **Flit THE BAT**, AND **Gobbledeygook THE TURKEY**.

You will NEED A PRINTER, PAPER, THIN CARD, SCISSORS, GLUE AND SOME LIGHT BROWN WOOL.

***Note for Parents and Carers:**
This project requires scissors. Please supervise at all times.



INSTRUCTIONS

Slot down
the wings at
either side.



Gobbleygook the Turkey

1. Cut out the body and apply glue as shown to make a tube. Then cut out the tail, head, feet and wings.
2. Fold and glue the wings, just so there's artwork on both sides. Then slot the wings into place.
3. Finally, glue the head, the feet and tail into place.

Flit the Bat

1. Cut out the body and apply glue as shown to make a tube.
2. Cut out the wings, fold them and glue them together so the artwork is on both sides.
3. Slot the wings as shown on the right.
4. Then stick on the head and feet!



Similar to the
Turkey, slot the
wings down at
either side. Then
stick on the feet
and face.

Stick the head
together like
this.



Dancer the Shetland Pony


1. Cut out the body and apply glue as shown to make a tube. Then cut out the legs and heads.
2. Fold and stick the legs just so there's artwork on both sides. Then stick them onto the tube.
3. Stick both sides of the head onto the tube, as shown on the left. Make sure to leave a gap for the hair.
4. Take the light brown wool, and cut roughly 25 to 30 strands. About 14cm long each. Tie a knot as seen below. Then repeat once more so there are two hair strands.
5. Place one strand over the head. Then another in the slot provided for the tail.

DANCER THE SHETLAND PONY



Don't forget to cut into these lines, preparing for the yarn to be added later.

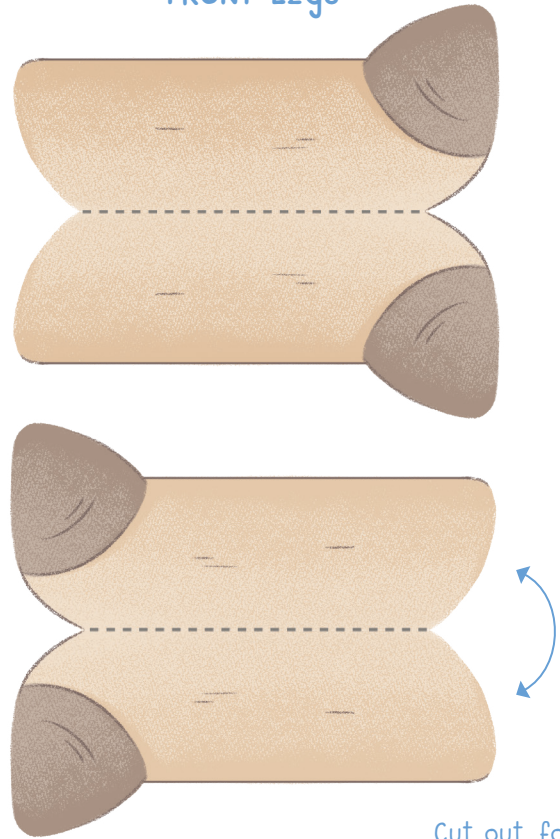
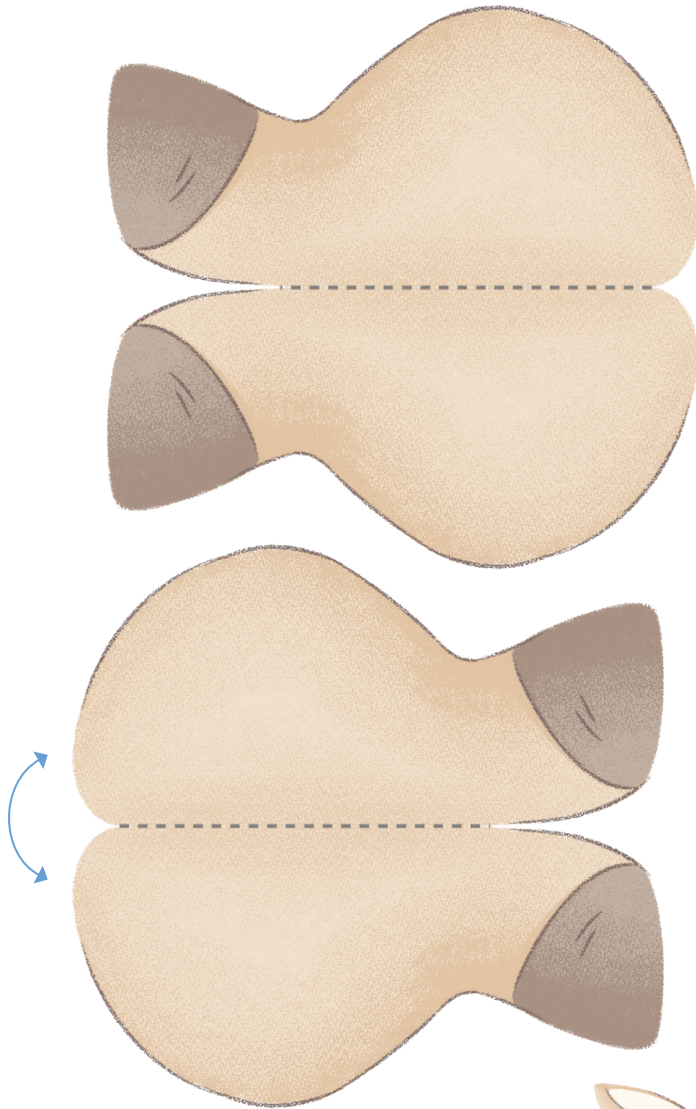
TIP: Gently cut along the outer lines. Fold and stick the pieces together first before adding the coloured yarn for DANCER'S HAIR later.

SHARE YOUR CREATIONS WITH US! Ask your grown up to send a picture to hello@metoyou.com or tag us on our socials using #MyBlueNoses at  @OfficialMyBlueNoseFriends  @mybluenosefriends_official

DANCER THE SHETLAND PONY

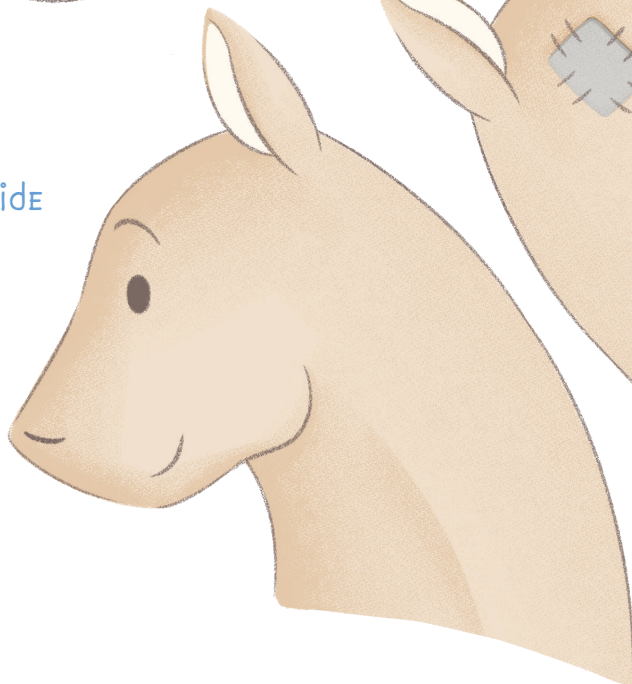
Back Legs

Front Legs

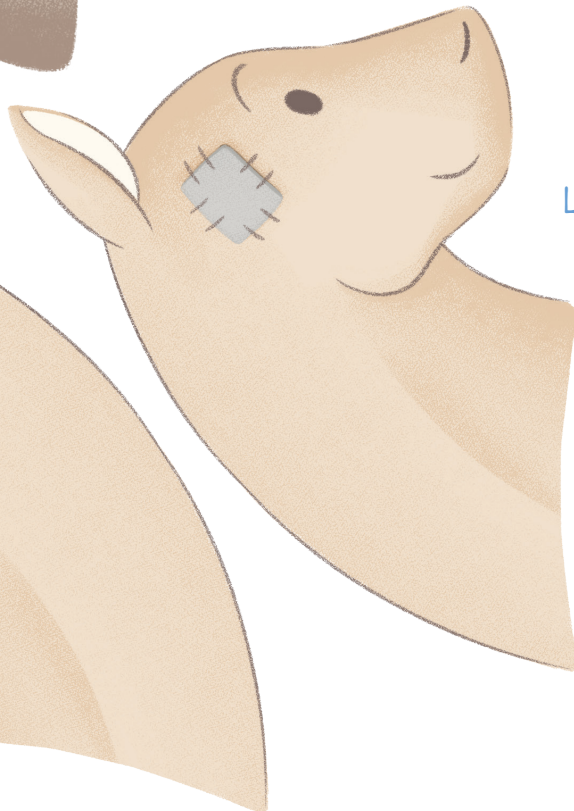


Cut out, fold AND glue together.

HEAD
Right Side

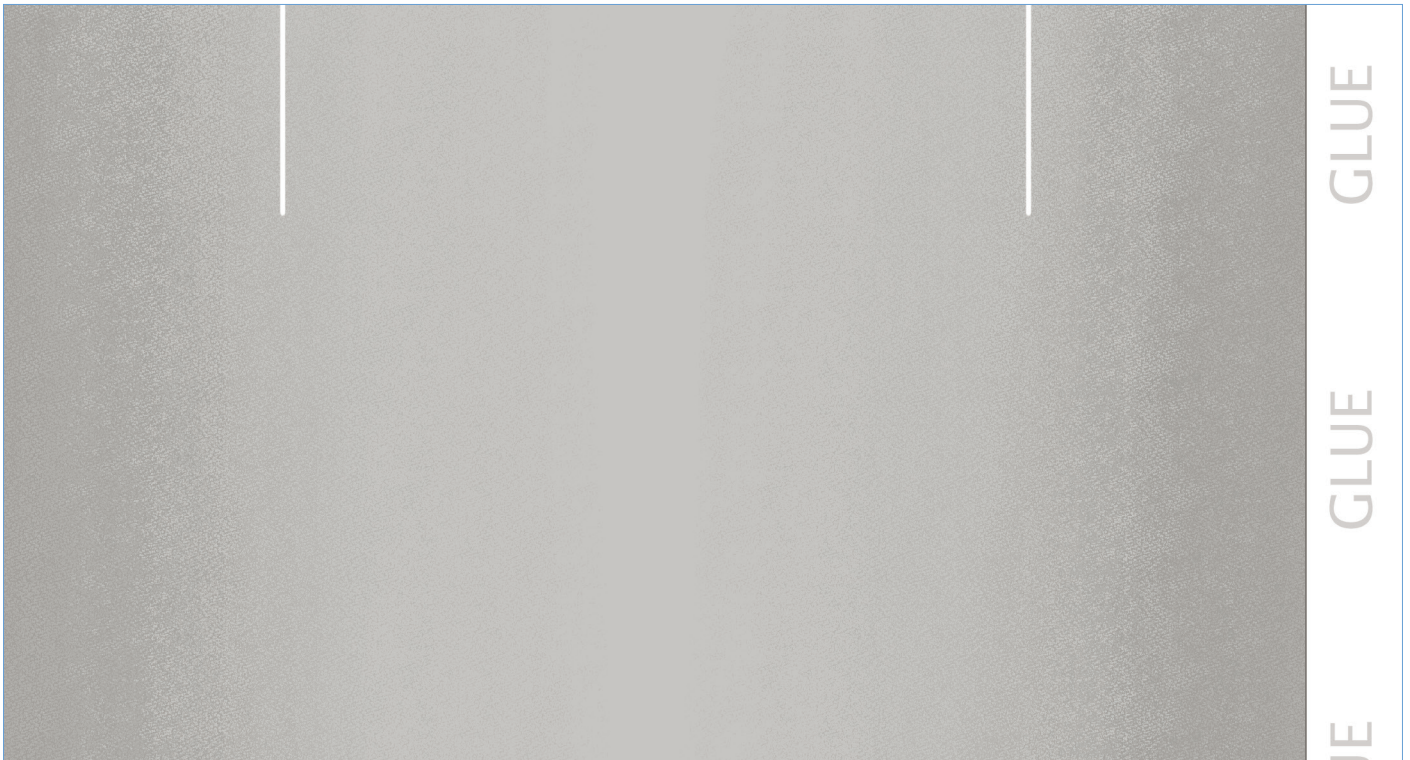


HEAD
Left Side



Flit the Bat

Part 1 - Body, Head and Feet



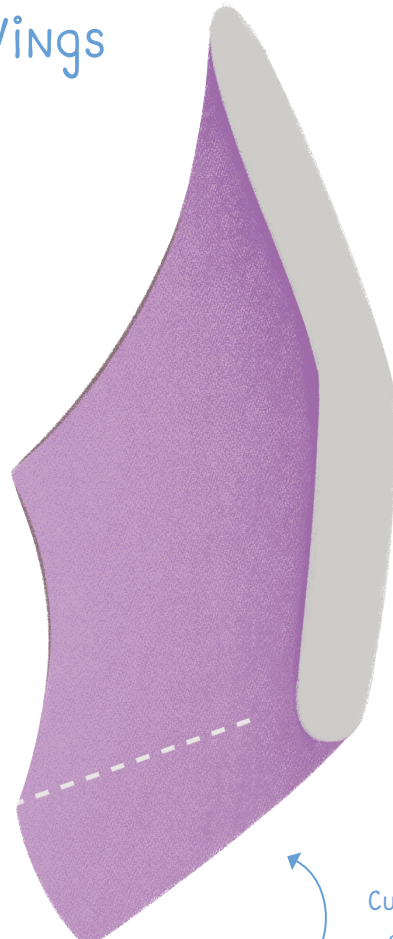
Flit's HEAD



Flit's FEET

Flit THE BAT

PART 2 - Wings



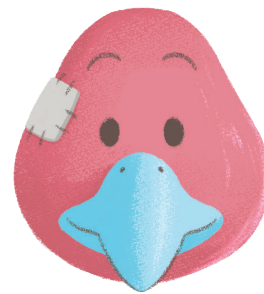
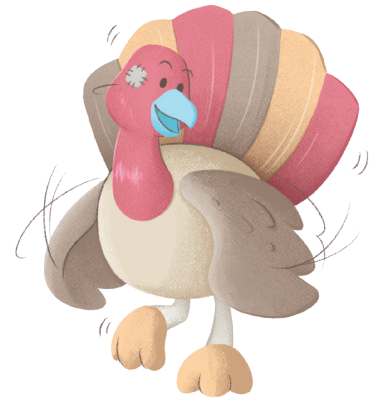
Don't forget to cut into these lines after glueing the wings.

Cut out, fold AND glue together.



Gobbledygook THE TURKEY

PART 1 - BODY, HEAD AND FEET



Gobbledygook THE TURKEY

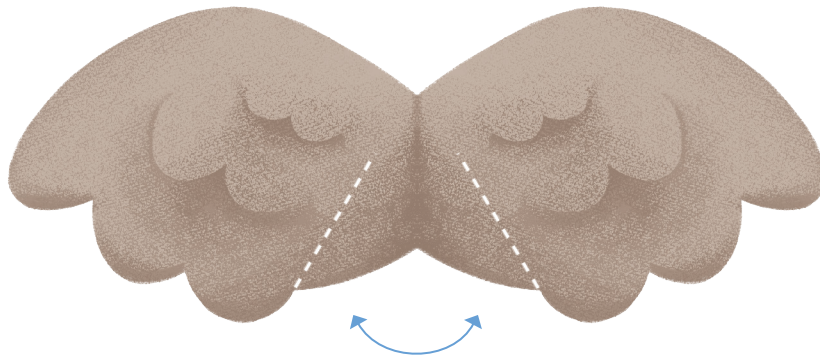
PART 2 - Tail AND Wings



GLUE HIS TAIL
ONTO THE BACK
OF THE TUBE.



Don't forget
to cut along THE
WHITE DASHED
LINES, AFTER
gluing.



Cut out, fold AND
glue TOGETHER.