

retrospec

Lenox PLUS

2, 3, & 4 Bike Hitch Rack



OWNER'S MANUAL & ASSEMBLY INSTRUCTIONS

⚠ WARNING: Please read this manual and assembly instructions carefully and entirely before beginning assembly.

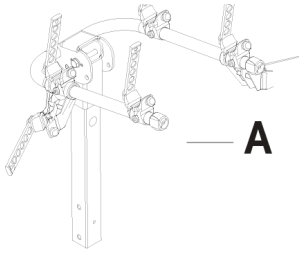
⚠ WARNING: Bikes and/or the rack falling on the road can cause serious accidents resulting in bodily injury or death. Do not use this rack on any vehicle on which it can not be properly mounted as described in this instruction sheet.

- Only install rack on vehicles with 2" receiver hitches (NO hitch adapters).
- NEVER use on trailers, RV's, hitch adapters, or front of vehicles.
- Bikes must be secured to the rack using the supplied tie-downs, and additional straps if necessary.
- Check regularly during use that all bicycles remain secured and all bolts and pins are tight.
- Maximum weight, evenly distributed: 4-bike = 140lbs; 3-bike = 105lbs; 2-bike = 70lbs.
- Bicycle tires should not be placed directly in front of an exhaust pipe. Tires can melt.
- Make sure that all of the rack and bicycles are kept at a safe distance from the road (entering & exiting driveways).
- Not safe for Tandem Bikes, Recumbent Bikes, Motorized Bikes, most ebikes, or other non-standard bikes.
- Remove the rack from your vehicle or fold carry arms when not in use.
- Do not block taillights or other vehicle lights with bikes.
- Drive carefully! Drive slowly over bumps. Do not drive off-road.
- Do not use the rack if any parts are missing. Contact Retrospec for missing or replacement parts.
- Bikes should never extend beyond the sides of the vehicle.
- Install the rack and load bicycles only at a very safe distance away from moving traffic.

Tools Required

2– 5/8" wrenches, 2– 11/16" wrenches; or 2 adjustable wrenches.

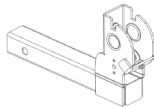
A. Parts



— A



— B



— C

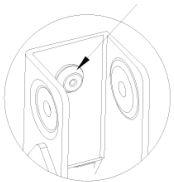
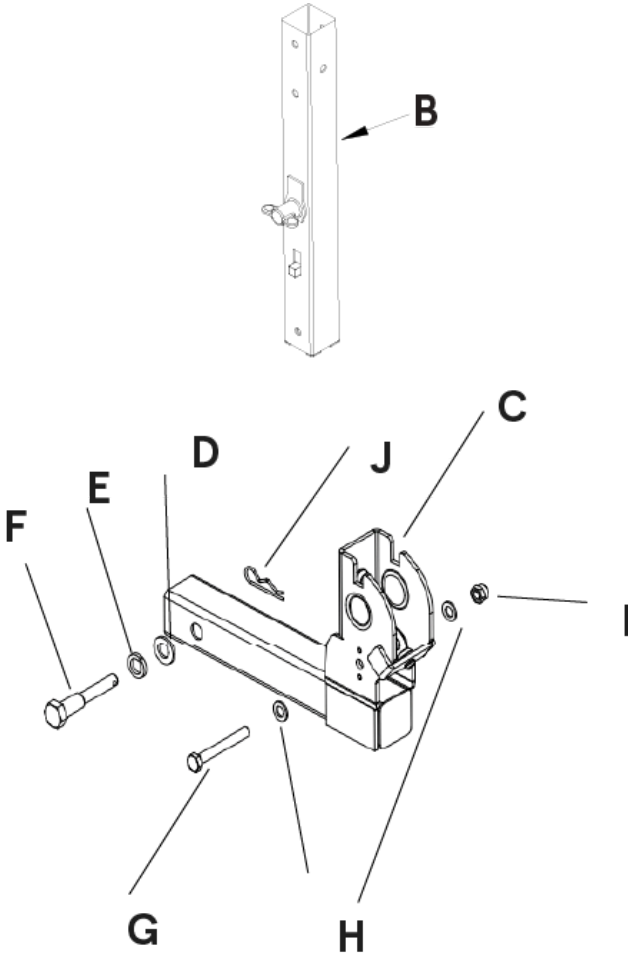


Item No.	Description	Qty.
A	Base Assembly	1
B	Vertical Tube	1
C	Vertical Tube Upper Assembly	1
D	Ø16 Flat Washer	1
E	Ø16 Spring Washer	1
F	Threaded Hitch Bolt	1
G	M10*80 Hexagonal Bolts	1
H	Ø 10 Flat Washer	6
I	M10 Self-Locking Nuts	3
J	Hairpin Cotter Pin	1
K	M10*65 Hexagonal Bolts	2
L	M8*20 Hexagonal Bolts	1
M	Ø8 Flat Washer	1
N	Ø 8 Spring Washer	1
O	Protective Pad on Vertical Post	1

B. Assembling Rack

Step 1:

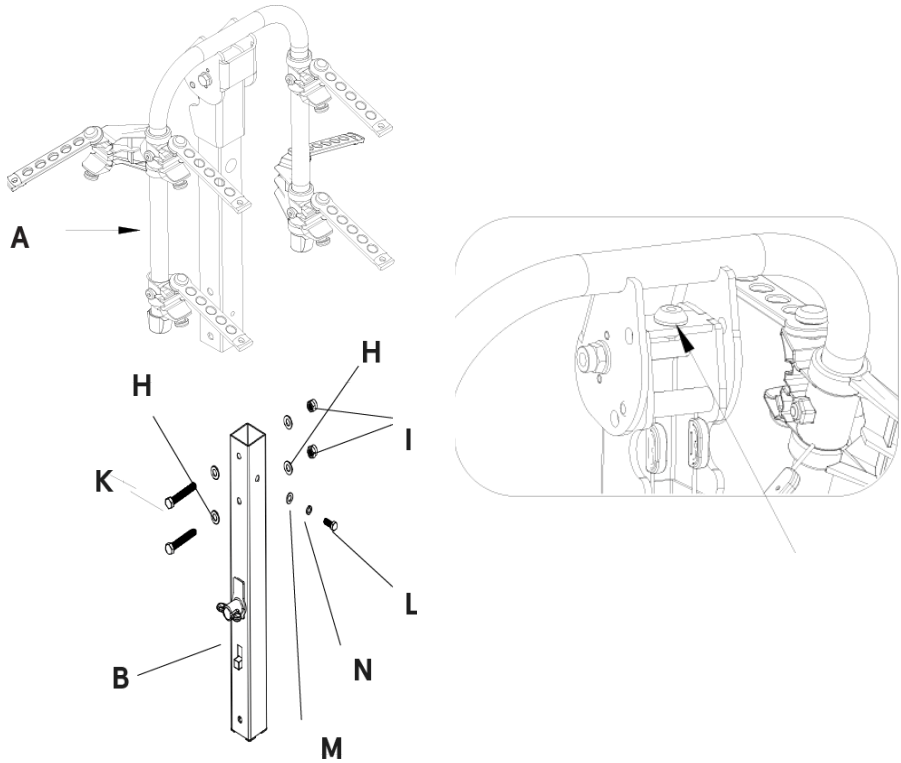
- Insert B into the inside of C, then connect them in order with G-H-H-I fasteners.
- Use F-E-D-J to connect the base to the car rear hitch receiver.



IMPORTANT: Due to the Round Rubber Buffer Pad, some force may be required to push 'B' to compress the pad to insert the bolt 'G' through the pivot holes.

Step 2:

- Plug A and B together, and connect the two holes on the side with two sets of standard parts of K-H-H-I locking.
- Connect one hole on the front side with L-N-M locking.
- Tighten nut and bolt firmly using two wrenches.



CAUTION: See insert diagram: In order to reduce vibration, increase durability and reduce noise, a Round Rubber Buffer Pad is added here (insert diagram). When the U-shaped crossbar is folded or when unfolding (up), it is necessary to push/pull the U-shaped support arm so the Round Rubber Buffer Pad is compressed so the locking pins are fully engaged. You will hear the pins 'pop' lock into place, but always pull/push the support arms to make sure they are fully engaged/locked.

NOTE: Upon completion, both parts (A & B) should be securely joined together.

IMPORTANT: When rack is in an upright position make sure the locking pin in part B is fully engaged and locked into the notch of part C Vertical Tube Assembly.

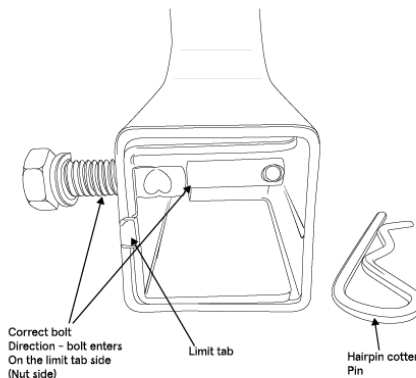
! WARNING: This Lenox rack should only be used on 2" receiver hitches - no adapters. Never use this rack on trailers or RVs.

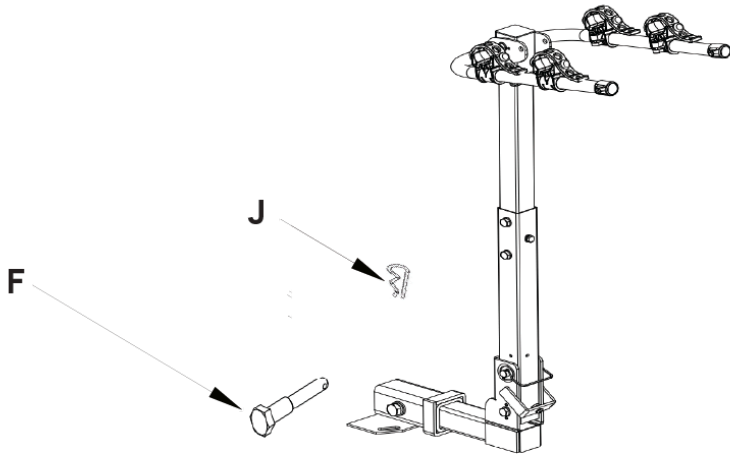
2" Hitch Size:

Remove protective cover (plug), ball mount(s), conversion plates, etc. The 2" hitch receiver should be clear, smooth, and unobstructed.

C. Installing the Rack on Your Vehicle:

- Insert the Anti-Rattle Adapter into the Hitch Insert (male end of your rack that slides into the vehicle), slide in up to the Limit Tab.
- With the arms in the folded-down position, install the now assembled rack into your vehicle's 2" hitch receiver. Line-up the holes in the Hitch Insert and the AntiRattle Adapter with the hole in the receiver then insert and thread the large Anti Rattle bolt through the holes. Tighten securely using wrenches. Make sure to thread in the large bolt from the same side as the Limit Tab.
- When tight, insert the Hairpin Cotter Pin (Q) into the hole in the end of the large Anti Rattle Bolt (P).
- When secure, there should not be any movement of the rack inside of the hitch receiver when done.

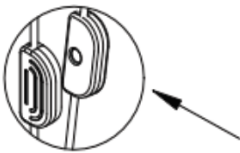




⚠ WARNING: Never use the rack without the Threaded Hitch Bolt 'F' in place and securely tightened, and with the Hairpin Cotter Pin 'J' in place. Failure to install and properly tighten the Threaded Hitch Bolt 'F' will allow the rack to separate from the vehicle and fall onto the roadway potentially causing a serious accident.

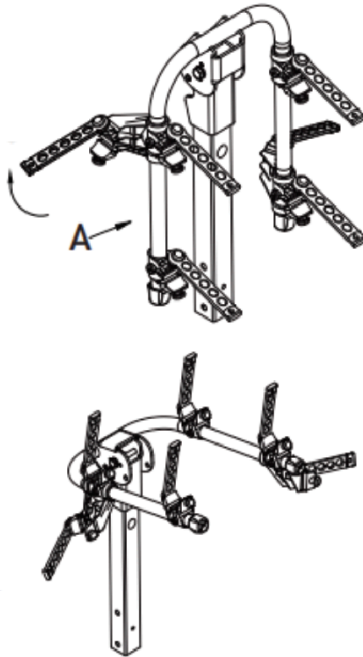
D. Folding/Unfolding Carry Arms and Tilt-Away Function

- **FOLDING/UNFOLDING:**



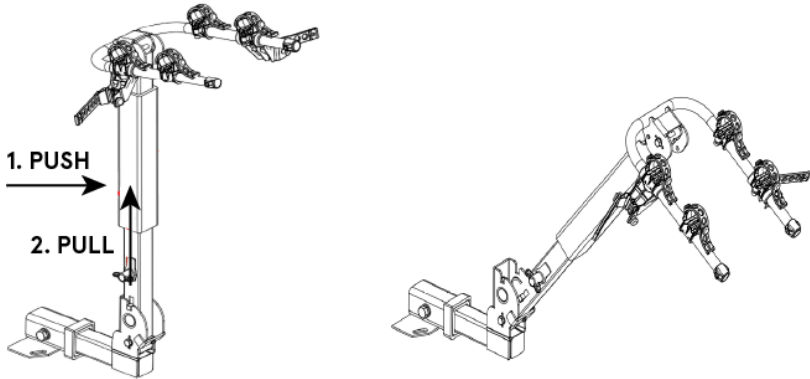
- Move the U-shaped support arm 'A' in the desired direction shown by the arrow (extended to load bikes or folded for storage/transport).
- Squeeze/pinch the red tabs at the rear pivot/behind the U-support arms to unfold and store. Listen for the pins to lock into place when folding or unfolding. Check that the arms are locked in the desired position.

- Pinch the elastic part inside the tube with two fingers to activate the folding function.
- **IMPORTANT:** Due to the Round Rubber Buffer Pad, you may need to apply pressure to the U-Shaped support arm to lock the arms in place (folded or extended). Extra pressure may be required when new.



- **TILTING:** Lift the red lever (drawing p.9) on the left side of the lower vertical mast, *when the rack is not loaded with bikes*, to unlock the vertical mast and tilt-away the rack from the rear of the vehicle allowing the tailgate/window hatch to be opened. To avoid damage to your vehicle (or bikes), upon first use, open the tailgate slowly, checking to make sure there is enough clearance between the tailgate and the rack before fully opening the tailgate.

⚠ WARNING: Do not use this tilt-away feature with bikes loaded on the rack, it may be too heavy to safely lift back up into position.



E. Loading Bicycles onto Rack

Before loading bikes onto the rack, rotate/position the Tie-Down Cradles to their upright position. You can rotate and slide back-and-forth to allow for optimum positioning of the bikes on the rack. The Cradles may be stiff and difficult to move when new, requiring a bit of muscle.

Wrap 'O' Protective Pad onto the Vertical Post to protect your bicycles from dents/scratches.

1. Remove all loose items from bicycles (pumps, bags, etc.) and check that all quick release hubs are tight.
2. Load the first bicycle with its chain and gears facing away from the rack, make sure that bicycles do not come in contact with the vehicle.
3. Load subsequent bicycles in alternating directions, for best weight distribution, load heaviest bicycles first, with lighter bicycles on the outside, add padding between bicycle contact points if necessary.
4. After bicycles are loaded, check that the entire rack is secure and that no wobble bolt is tight, and that the rack is firmly in place.
5. Vision out of the rear window may be restricted - use side mirrors accordingly when backing up.

Contact Us

Need some help with your new gear? Just want to say “hey” and talk to someone on our team? We’re here for that too.



Give us a follow, while you're at it:

[@retrospec](#)

[#retrospec](#)

[#readytooutdoor](#)