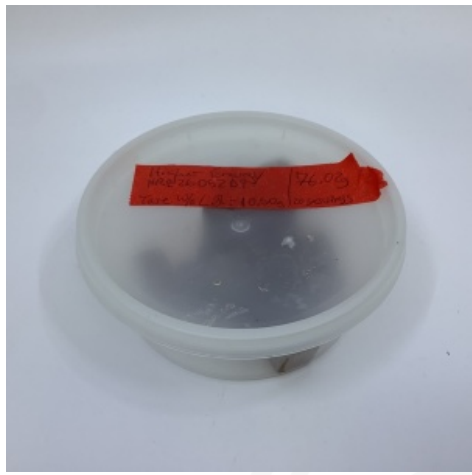


# Certificate of Analysis

Produced: Jan 20, 2026

Sample: Higher Energy (Edible Solid) • Client: Rose Los Angeles Inc



**Batch No.:** HRE26052D9  
**Matrix:** Edible Solid  
**Sample ID:** ICC-260116-07-001  
**Collected on:** Jan 16, 2026  
**Received on:** Jan 16, 2026  
**Sample Size:**  
**Package Size:** 76.12 g  
**Serving Size:** 3.81 g

### Tests Taken

Potency

### Cannabinoid Overview

<b>Total THC:</b>	<b>10.6 mg/srv</b>
<b>Total CBD:</b>	<b>0.0256 mg/srv</b>
<b>Total Cannabinoids:</b>	<b>11.4 mg/srv</b>
<b>Sum of Cannabinoids:</b>	<b>11.4 mg/srv</b>

### POT-INST-005: POT-INST-005: Potency • Jan 20, 2026

Analyte	Amt (mg/srv)	Amt (mg/pkg)	Amt (%)	Amt (mg/g)	LOD/LOQ (mg/g)	Pass/Fail	Analyte	Amt (mg/srv)	Amt (mg/pkg)	Amt (%)	Amt (mg/g)	LOD/LOQ (mg/g)	Pass/Fail
CBC	0.144	2.88	0.00379	0.0379	0.00307/0.00921	N/A	CBT			ND	ND	0.00133/0.00466	N/A
CBD	0.0256	0.512	0.000673	0.00673	0.000939/0.00466	N/A	Δ <sup>8</sup> -THC			ND	ND	0.000753/0.00466	N/A
CBDA			ND	ND	0.00225/0.00674	N/A	Δ <sup>9</sup> -THC	10.6	212	0.279	2.79	0.00124/0.00466	N/A
CBDV			ND	ND	0.000745/0.00466	N/A	THCA			ND	ND	0.00171/0.00513	N/A
CBG	0.533	10.7	0.0140	0.140	0.00106/0.00466	N/A	THCV	0.0781	1.56	0.00205	0.0205	0.000575/0.00466	N/A
CBGA			ND	ND	0.00166/0.00497	N/A	<b>Total THC**</b>	10.6	212	0.279	2.79		
CBL			ND	ND	0.000733/0.00466	N/A	<b>Total CBD**</b>	0.0256	0.512	0.000673	0.00673		
CBN	0.0255	0.509	0.000669	0.00669	0.00106/0.00466	N/A	<b>Total Cannabinoids**</b>	11.4	228	0.300	3.00		

\*\* Total Cannabinoids = Neutral Cannabinoids + (Acidic Cannabinoids \* 0.877)

\*\* Total THC = Delta-10-THC + Delta-8-THC + (Delta-8-THCA x 0.877) + Delta-9-THC + THC-O-acetate + (THCA x 0.877)

\*\* Total CBD = CBD + (CBDA x 0.877)

NR= Not Reported, ND= Not Detected, \*Reported by Dry Mass\*; \*analytical instrumentation used Cannabinoids: UHPLC-DAD, Moisture: Mass by Drying, Water Activity: Water Activity Meter, Foreign: Microscope\*  
 \*Density tested at a temperature range between 19-24 °C, \*Water Activity tested at a humidity range between 0-90% Relative Humidity. All OA samples are sampled by the client, All California State Compliant samples sampled using SAMPL-SOP-001.

