



# EasyWOOD

**Woodworking is Easy**

# EasyWOOD

The CAD/CAM software for woodworking

The ideal CAD/CAM for wood and similar materials working industry by numerically controlled machining centres.



**2D Parametric  
& 3D**



**Cabinet**



**Nesting**



**Housing**



**5 Axis**



**Axis  
Optimization**



**Simulation and  
Collision Detection**



**HMI**

# Software levels

## EasyWOOD Nest

Specific for Nesting

## EasyWOOD Beginner

The essential

## EasyWOOD Standard

3D Project and machining for up to 5 axis CNC

## EasyWOOD Premium

Top level: 5 interpolated axis

# Additional modules

## Automatic CAM processing

It allows to enter machining automatically

## 3D Simulation and Collision Detection

Perfect 3D model representation of your machine

## Nesting True Shape

Optimize your production

## BTL Import

BTL Import and manual link of machining

## EasyBEAM

BTL Import and automatic generation of beams machining programs

## EasyWALL

BTL Import and automatic generation of panels machining programs

## XDesignPRO

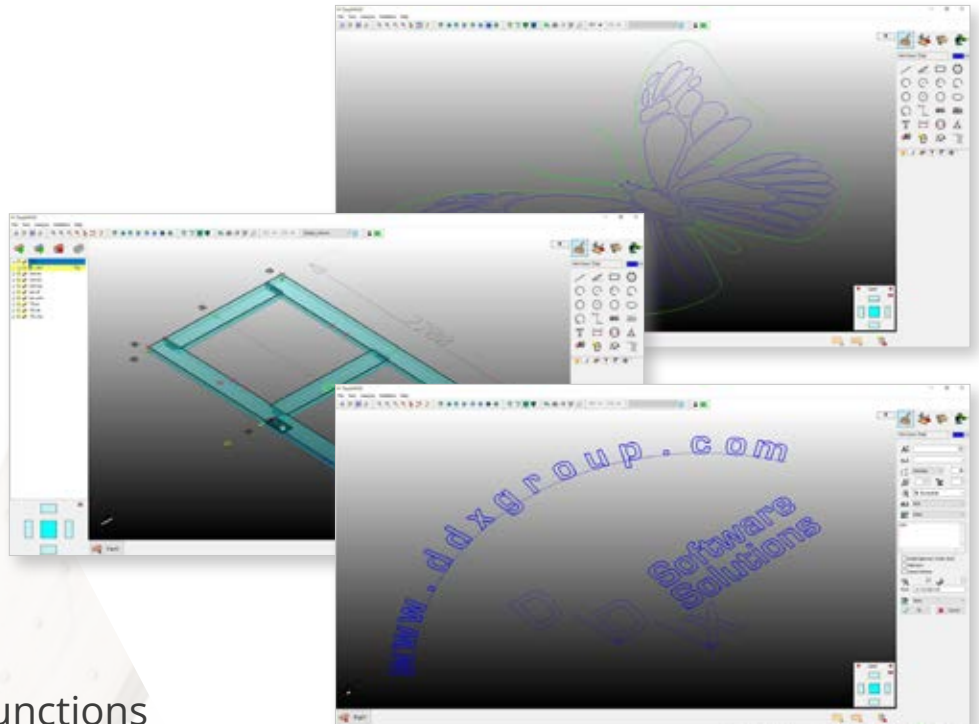
The software solution specifically dedicated to furniture and interior design

# CAD functions

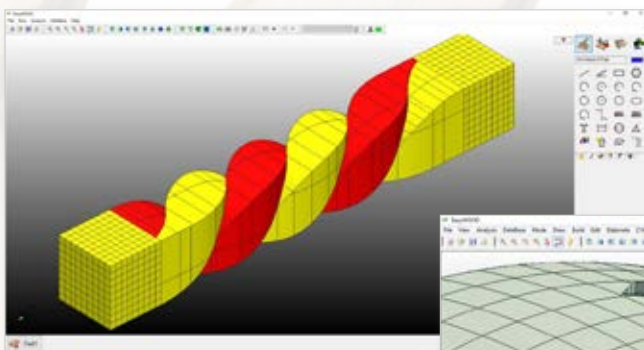
Below a short description of EasyWOOD CAD main functions:

## 2D functions

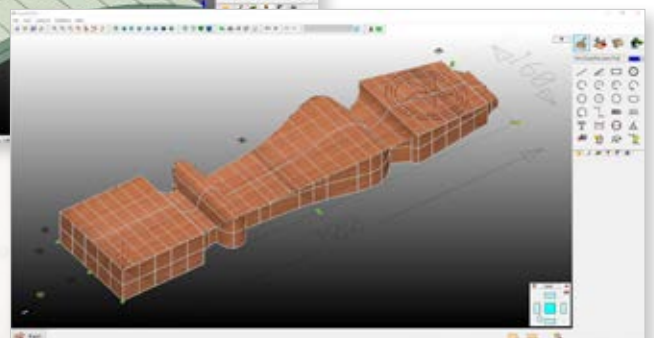
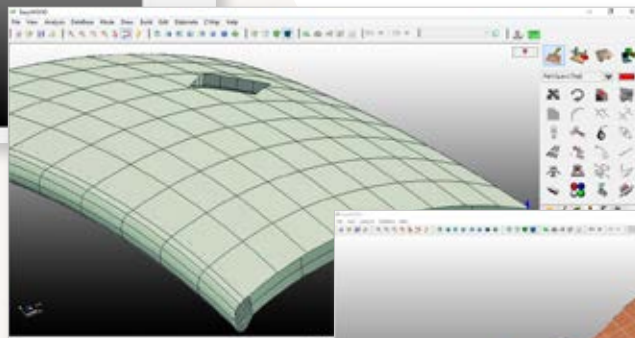
- Lines
- Arcs
- Circles
- Rectangles
- Multiline text
- Polygons
- Nurbs Curves
- Dimensions
- SCL Components
- Import files 2D (DXF, ecc.)



## Graphic modification functions

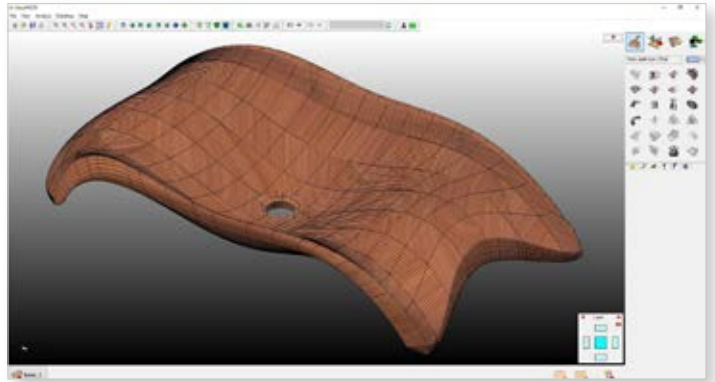


- Rectangle selection
- Move
- Rotate
- Join
- Cut
- Interpolate
- Scale



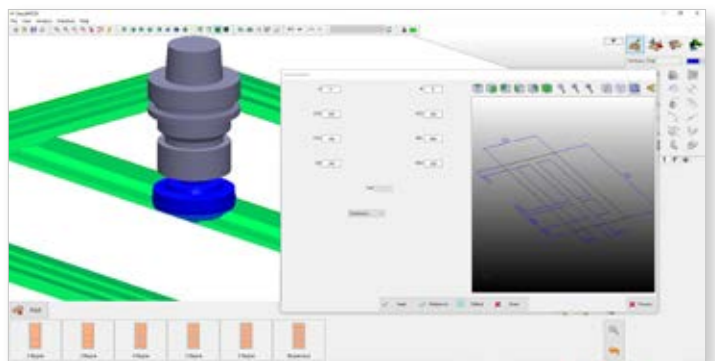
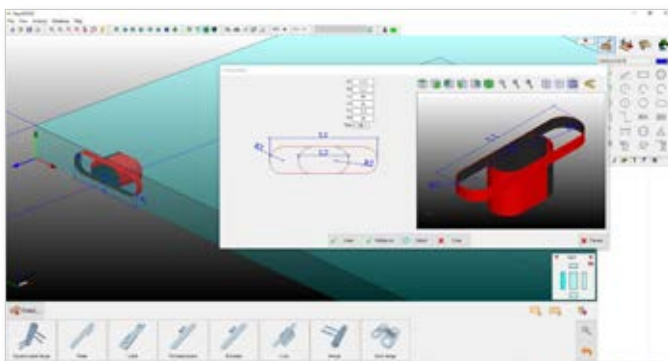
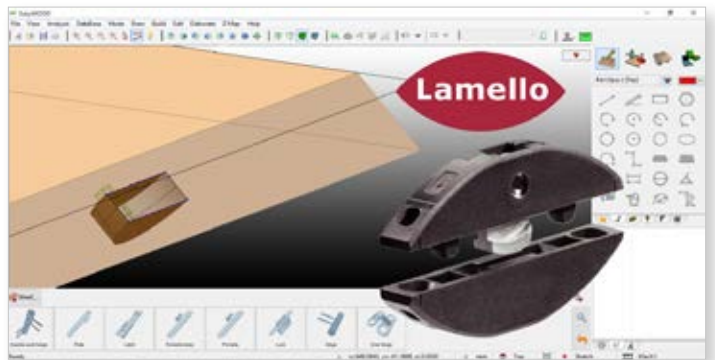
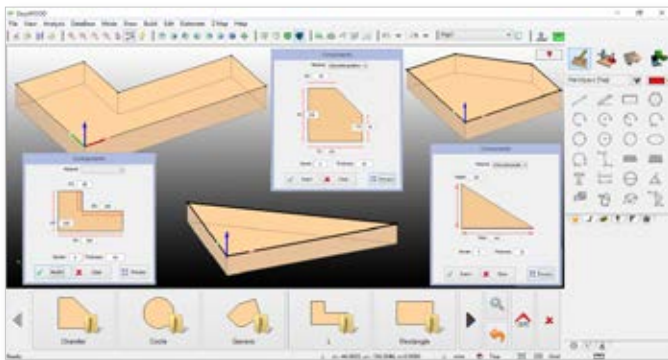
## 3D functions

- Frames and columns with fixed and variable section/torsion
- Ruled surfaces
- Loft surfaces
- Sweep surfaces
- Gordon surfaces
- Surface modification functions
- Import 3D files (IGES, STL, STEP, SAT, 3DM e SKP)
- Surface offset
- Generation of paths from surfaces
- Junction of two surfaces



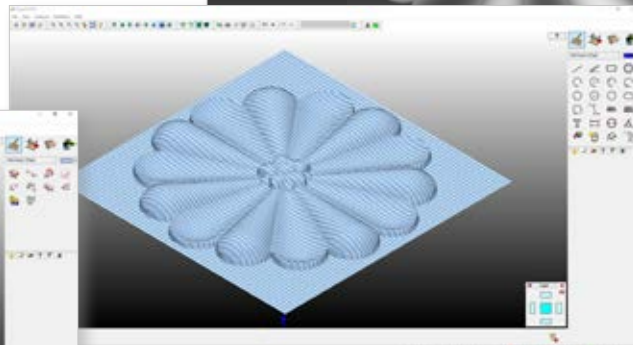
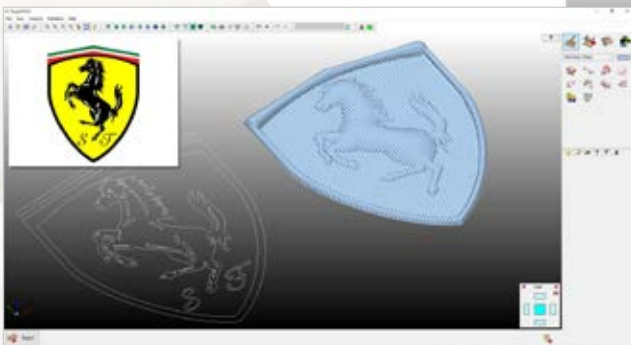
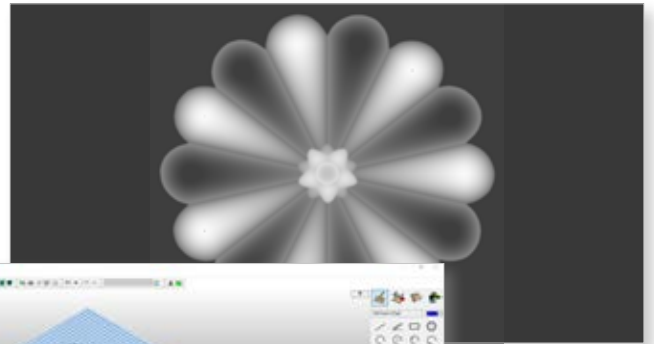
## Parametrical engine

- Library of components (vanity tops, kitchen tops, openings, tables, etc.)
- Library of various shapes of panels
- Library of features: included some examples of door hardware, furniture hardware, etc.
- Possibility to add quickly and customized models, panels and features



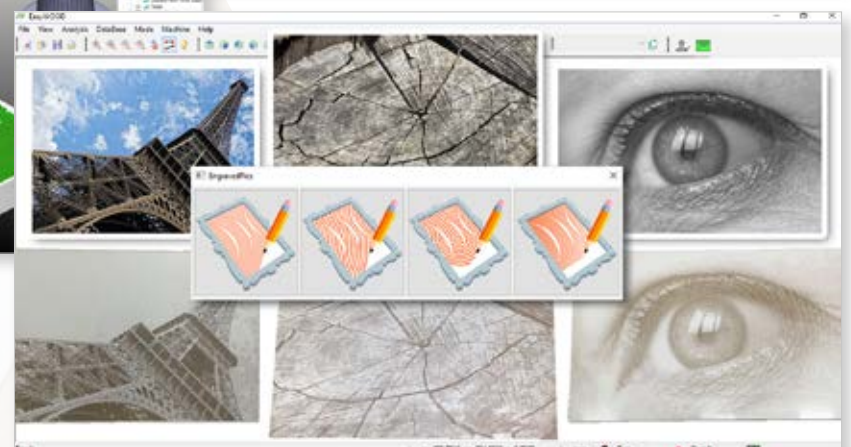
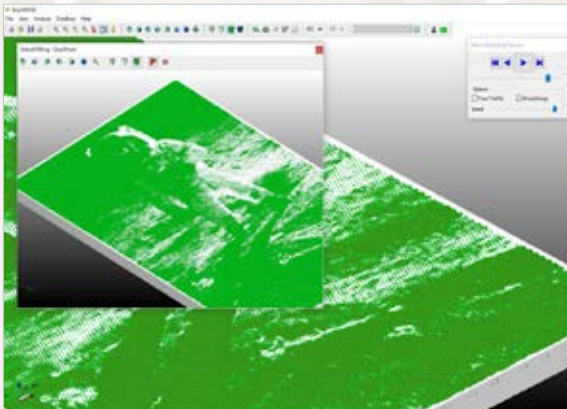
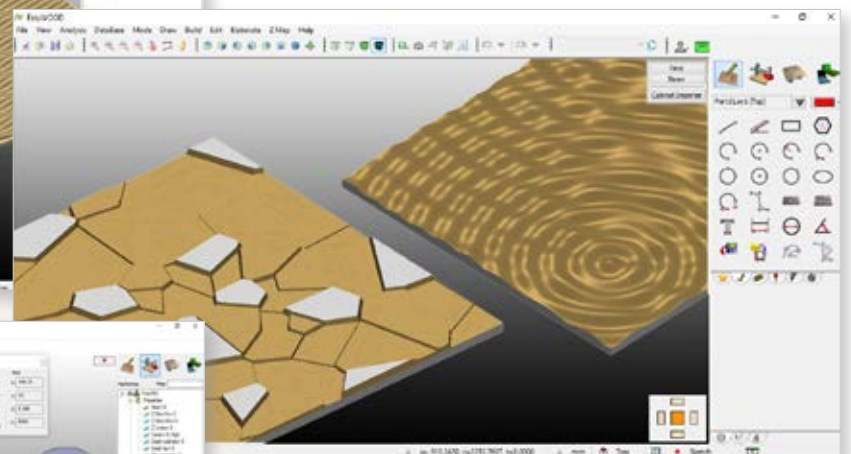
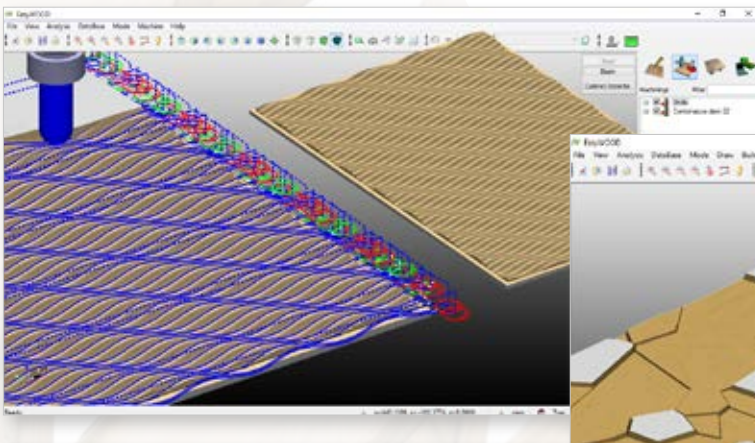
## ART module

- Images import
- Images vectorization
- Boolean operations
- Intersections
- Pictures Z Map
- Bas-relief generation



Creation of artistic panels:

- Waves
- Drops
- Voronoi
- Photos engraving

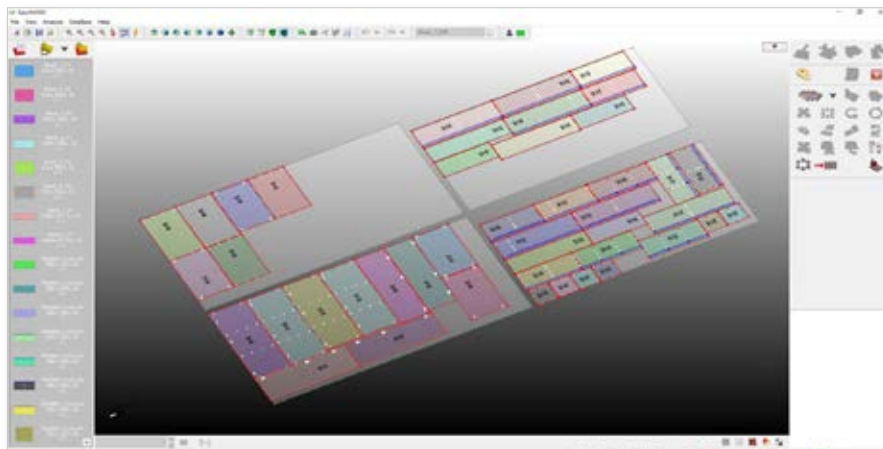
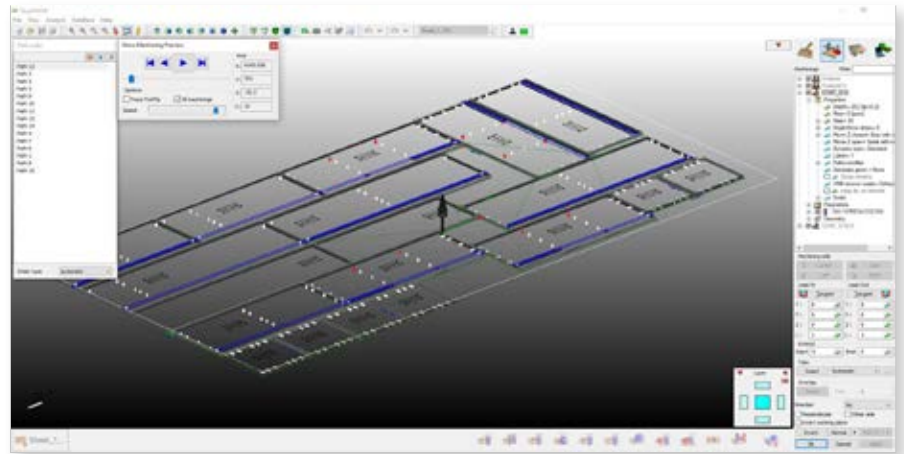


# EasyWOOD Nest

Specific for Nesting

## Machining

- 3 axis milling
- 3 axis drilling with multiple drilling optimization
- 3 axis profiling
- 3 axis pocketing
- 3 axis contouring with or without tab

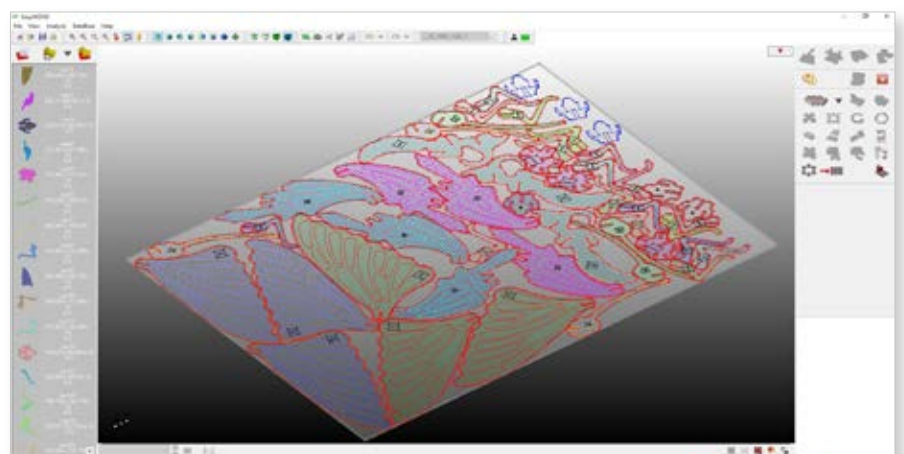


## Options

- Multi CNC machines management

## Nesting

- Automatic Nesting True Shape
- Possibility to manually modify the optimisation calculated by the software
- Selection of elements from production list (\*.csv file)
- Nesting from DXF file
- Generation of label with bar-code
- Panel store management
- Scrap recovery control
- Automatic CAM processing
- Customizable output



# EasyWOOD Beginner

## The essential

Available on the following CNC machining centers:

SCM / XILOG ; SCM / XILOG Plus

Morbidelli / XILOG; Morbidelli / XILOG Plus

HOMAG / WoodWoop from version 5

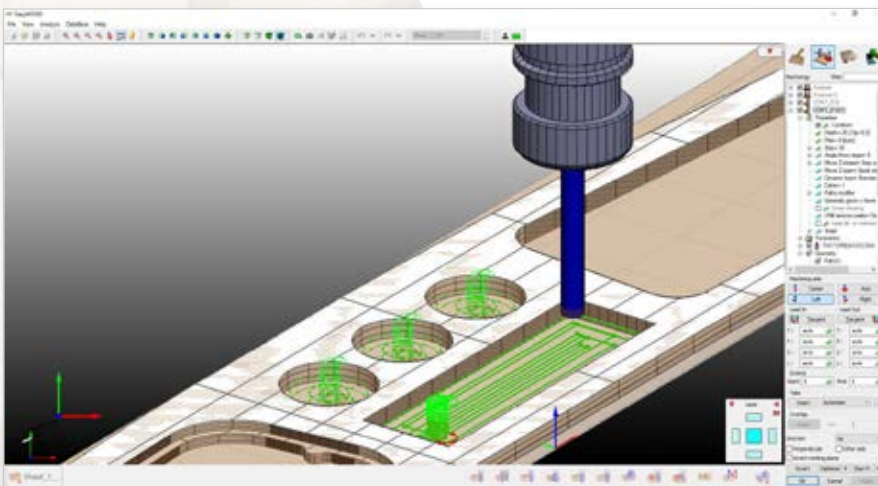
WEEKE / WoodWoop from version 5

Biesse

Masterwood / Masterworks (TLF format)

HOLZ-HER / NC Hops

\* Are you a CNC machines manufacturer and you want to be on our list? Please call us!

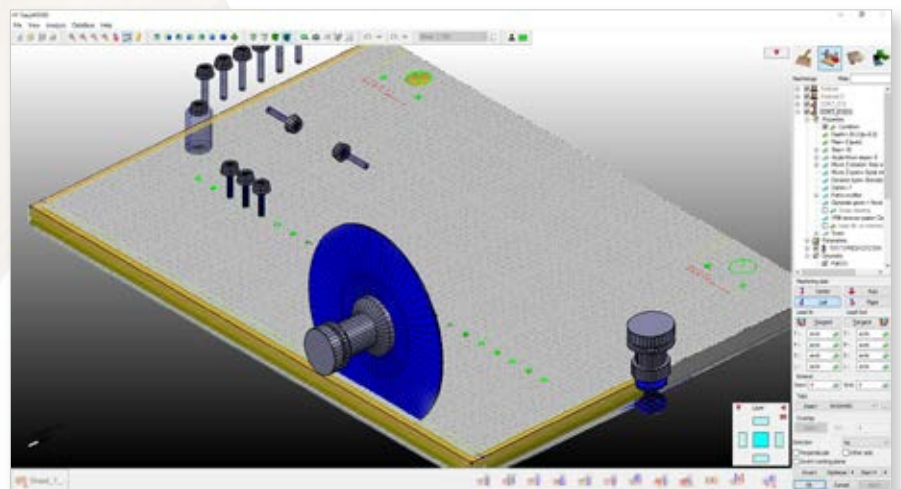


## Machining

- 3 axis milling
- 3 axis drilling with multiple drilling optimization
- 3 axis profiling
- 3 axis pocketing
- 3 axis contouring
- 3 axis engraving
- Aggregates management
- Blade cutting
- Virtual milling

## Options

- Multi CNC management
- Nesting True Shape
- Automatic CAM processing

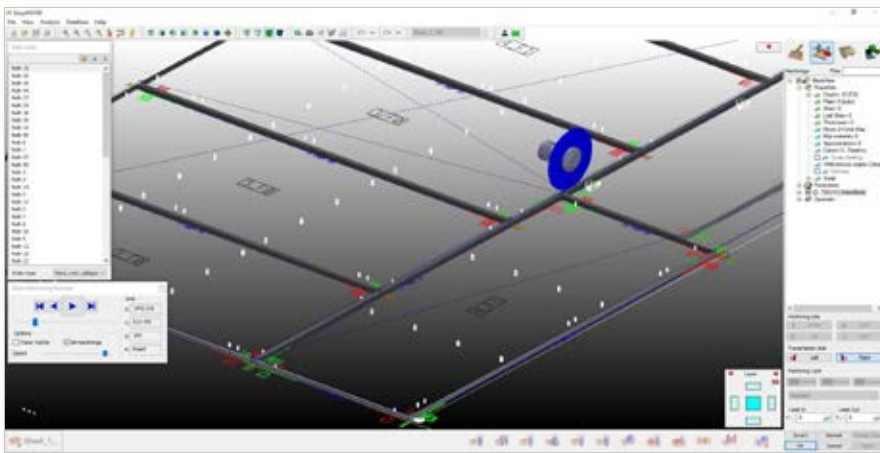
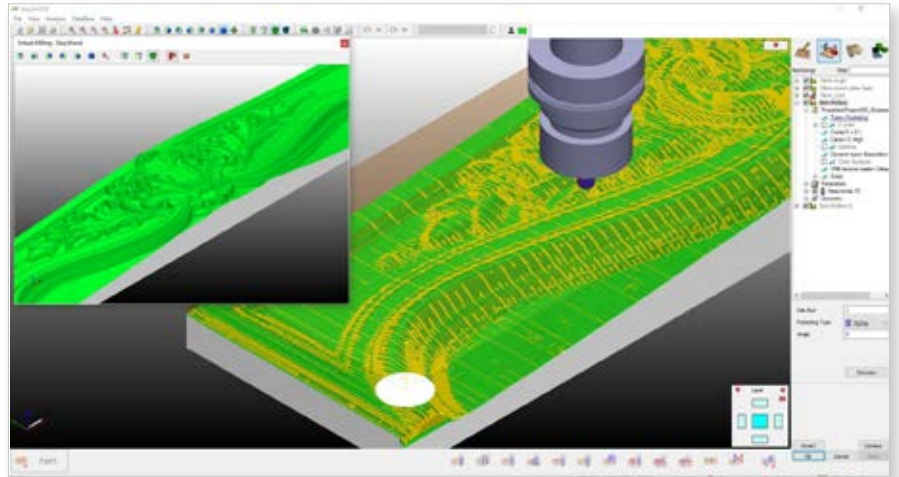


# EasyWOOD Standard

3D Project and machining for up to 5 axis CNC

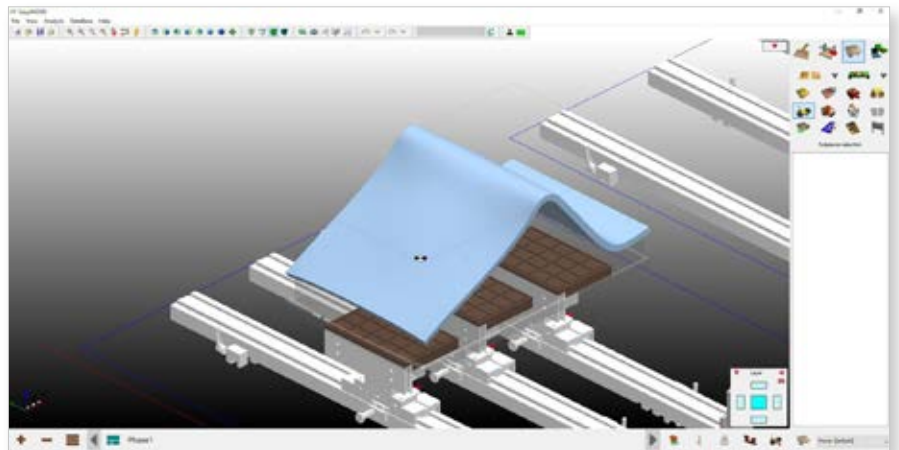
## Machining

- 3 axis milling
- 3 axis drilling with multiple drilling optimization
- 3 axis profiling
- 3 axis pocketing
- 3 axis contouring
- 3 axis surface roughing
- 3 axis surface finishing
- 3 axis engraving
- Aggregates management
- Blade cutting
- Virtual milling



## Options

- Multi CNC management
- Nesting True Shape
- Automatic CAM processing
- 3D Collision detection
- 3D Simulation
- Post-processor configuration, customized table

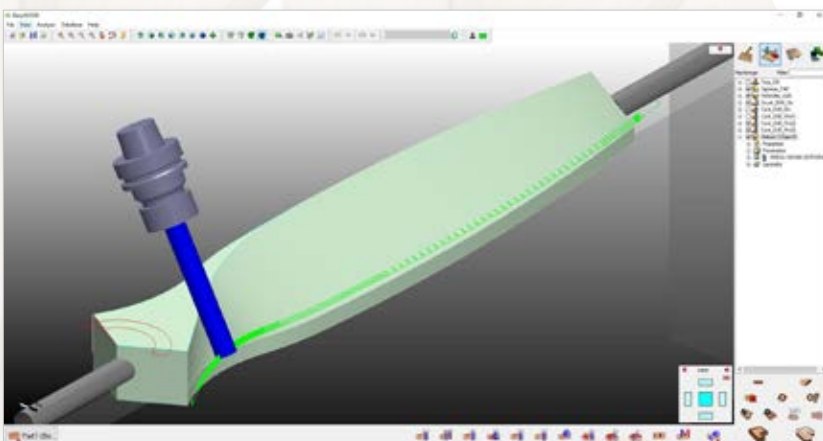
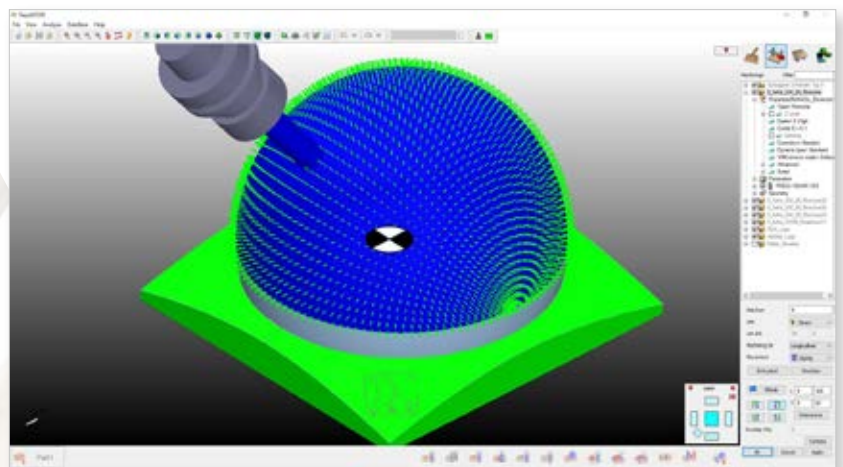
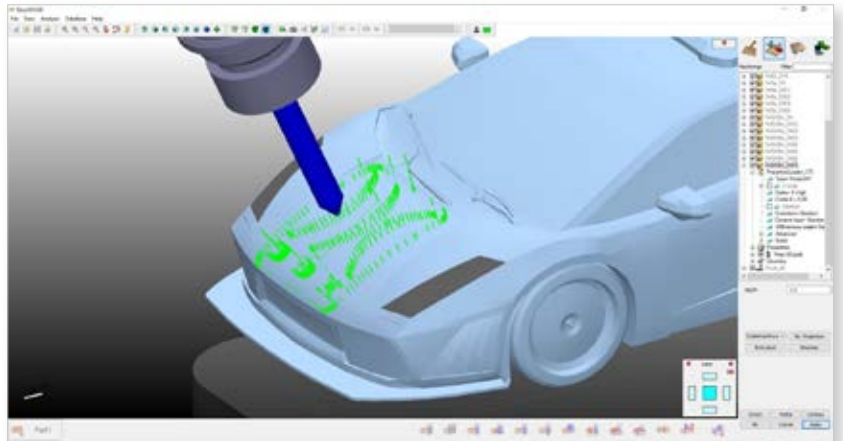


# EasyWOOD Premium

Top level: 5 interpolated axis

## Machining

- 3 axis milling
- 3 axis drilling with multiple drilling optimization
- 3 axis profiling
- 3 axis pocketing
- 3 axis contouring
- 3 axis surface roughing
- 3 axis surface finishing
- 3 axis engraving
- Aggregates management
- Blade cuts
- 5 axis machining with blade and mill: scallop, flowline, develop, pojection and pocketing
- Virtual milling



## Options

- Multi CNC management
- Nesting True Shape
- Automatic CAM processing
- 3D Collision detection
- 3D Simulation
- Post-processor configuration, customized table
- EasyBEAM
- EasyWALL

# Function list

Features		Nest	Beginner	Standard	Premium
	3D graphic and photo-realistic rendering of the project	✓	✓	✓	✓
	Design, modification and dimensioning of geometric entities: arcs, bi-arcs, lines, rectangles, squares, ellipses, circles, regular polygons, fillets, chamfers, construction plans, nurbs, etc.	✓	✓	✓	✓
	Design from predefined parametric models in library: vanity tops, kitchen tops, openings, tables, etc.	✓	✓	✓	✓
	Design of 3D surfaces: columns with fixed and variable section/ torsion, ruled, loft, swept, gordon, polymesh and surface drawing from curve grid		✓	✓	✓
	SCL programming to generate project and production* automatism  * automatic CAM link is needed	✓	✓	✓	✓
	Surface definition by laser scanning and IGES, STL, STEP, SAT, 3DM (Rhino) and SKP import		✓	✓	✓
	DXF, CAL, HPGL, PNT, ISO import	✓	✓	✓	✓

✓: included ○: optional

# Function list

Features	Nest	Beginner	Standard	Premium
 <p>Pictures vectorization</p>		✓	✓	✓
 <p>ZMap and polymesh of pictures: BMP, JPG, DIB, PCX, TGA</p>		✓	✓	✓
 <p>ART Module</p>		✓	✓	✓
 <p>Texturing</p>		✓	✓	✓
 <p>Graphic tool database, customized profiled tools and tool holders</p>	✓	✓	✓	✓
 <p>Recess, relief machining and sharp-edged engraving</p>	✓	✓	✓	✓
 <p>Aggregate management</p>		✓	✓	✓

✓ : included    ○ : optional

Features	Nest	Beginner	Standard	Premium
		✓	✓	✓
	✓	✓	✓	✓
			✓	✓
				✓
		○	○	○
	✓	✓	✓	✓
	✓	○	○	○
		✓	✓	✓

✓: included ○: optional

# Function list

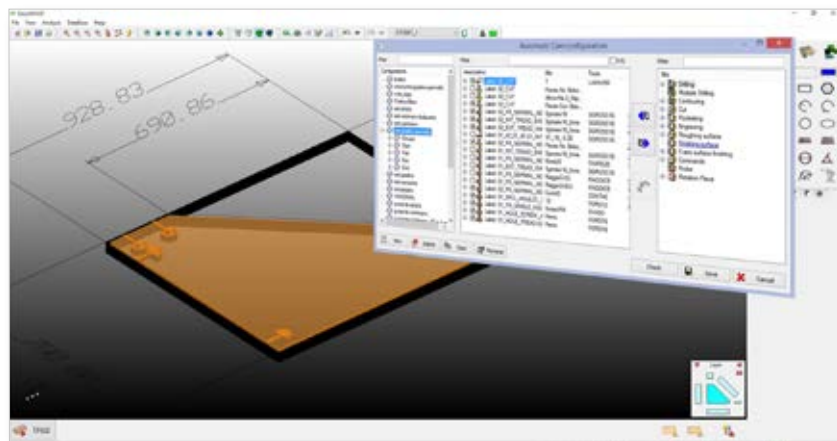
Features		Nest	Beginner	Standard	Premium
	Tool-path graphic simulation	✓	✓	✓	✓
	Graphic 3D simulation of the machining process and machining centre 3D collision detection		○	○	○
	True Shape Nesting	✓	○	○	○
	BTL import version 10.0 or higher				○
	EasyWALL / EasyBEAM for the manufacturing of beams, panels, houses, walls, carpentry. EasyBEAM and EasyWALL imports BTL files version 10.0 or higher				○
	XDesignPRO	○	○	○	○
	3 axis interpolated management	✓	✓	✓	✓
	3 axis interpolated management + 1 indexing axis			✓	✓
	5 axis interpolated management				✓
	Multi CNC machining centres control	○	○	○	○

✓ : included    ○ : optional

# Additional modules

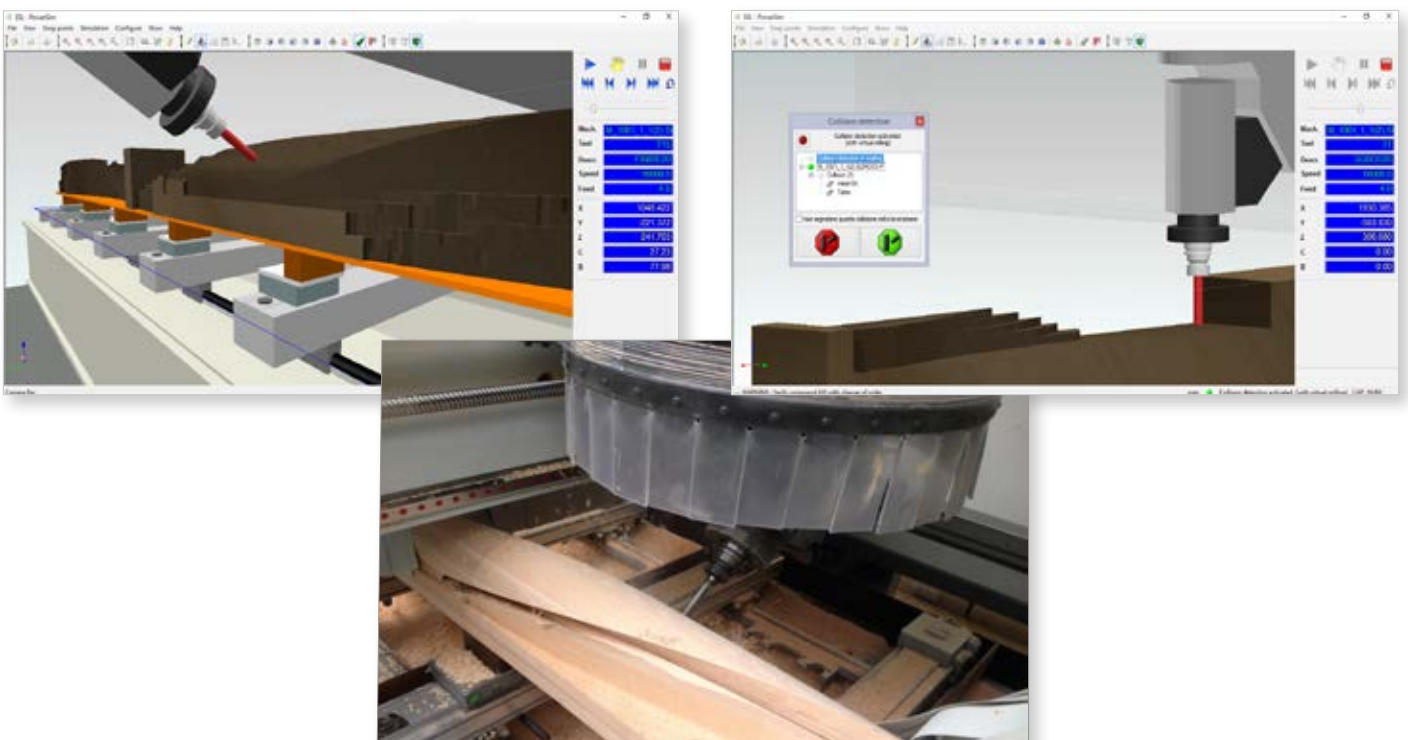
## Automatic CAM processing

It allows to enter machining automatically making the machining process automatic and reducing production time and costs.



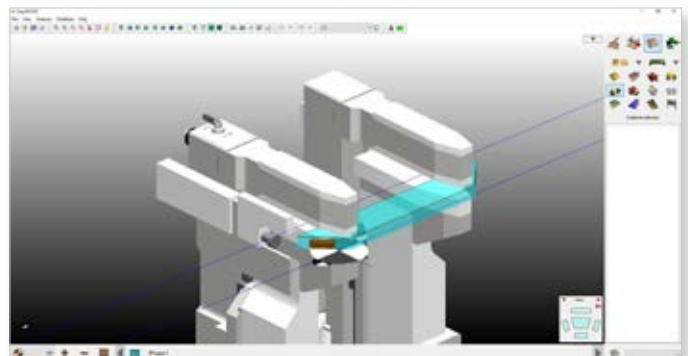
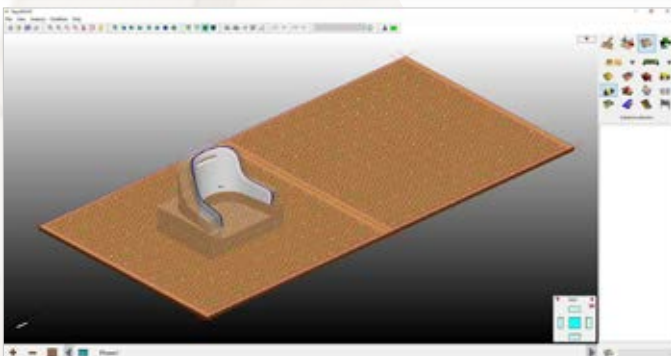
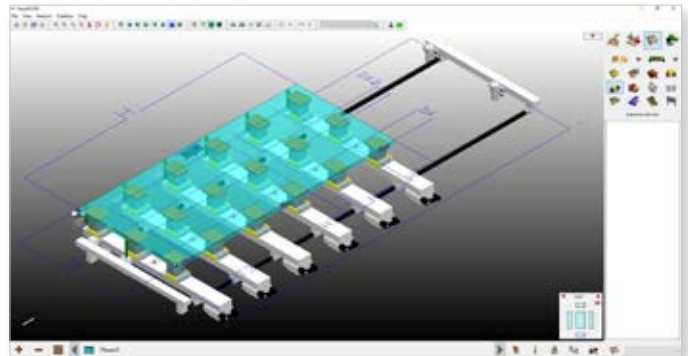
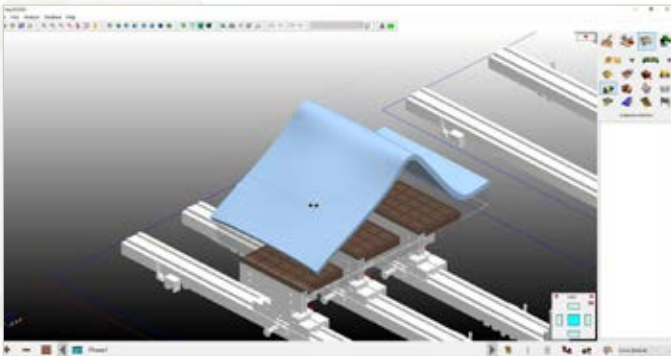
## 3D Simulation and Collision Detection

Perfect 3D model representation of your machine.



# Additional modules

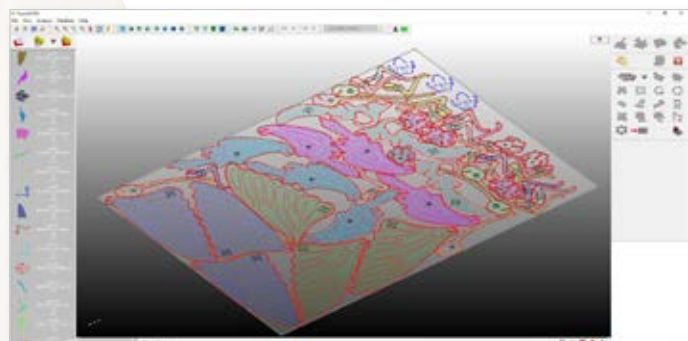
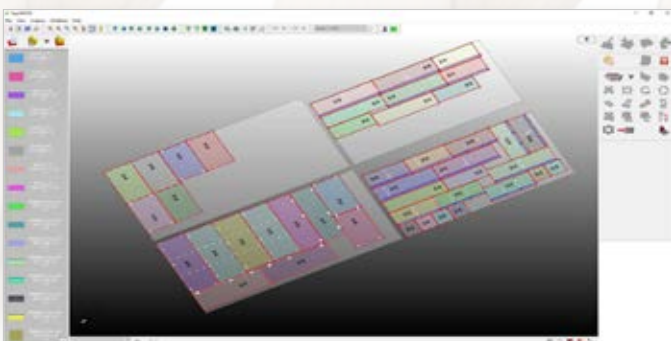
Post-processor and customized table specific for your machine



## Nesting True Shape

Reduce your waste and optimize your production

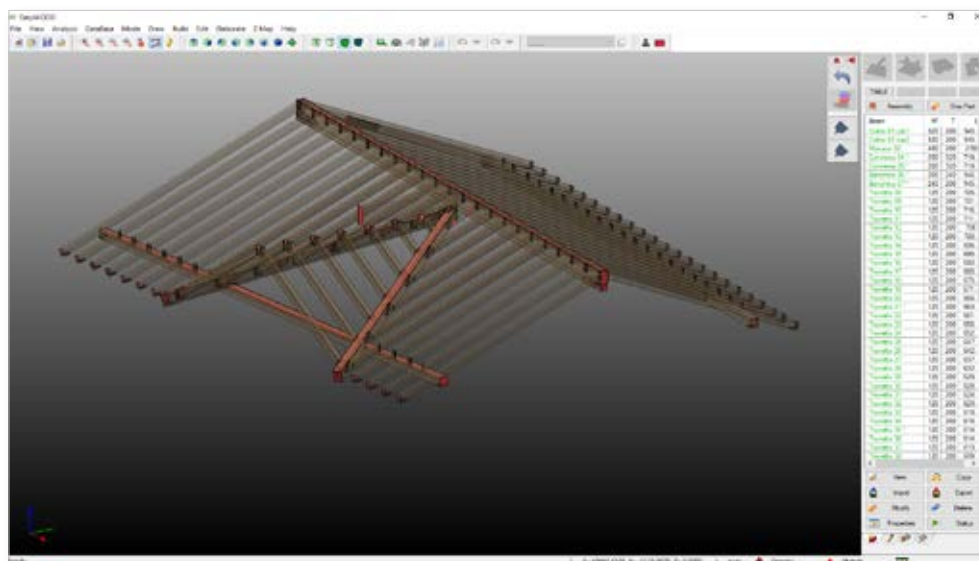
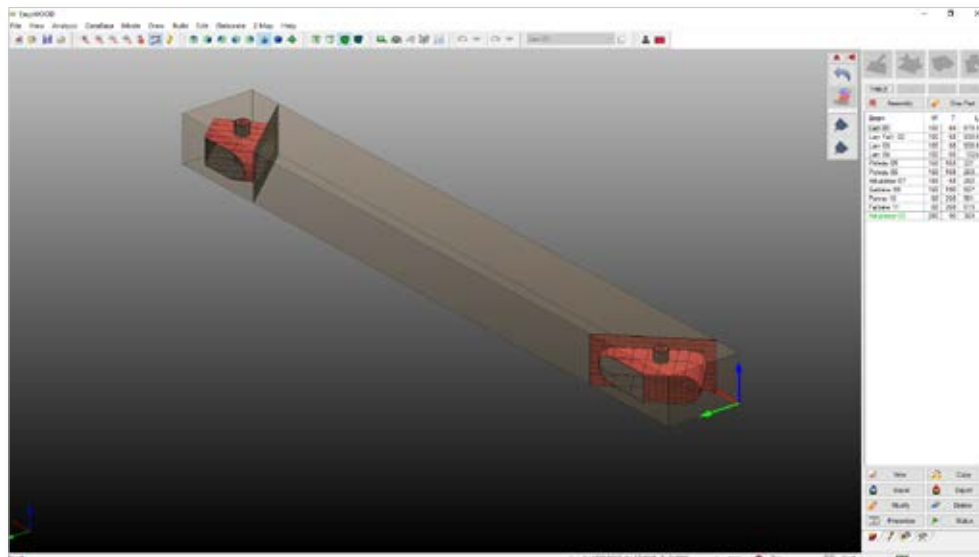
- Selection of elements from production list (\*.csv file)
- Nesting from DXF file
- Generation of bar-code labels
- Panels store management
- Scrap Recovery control
- Possibility to manually modify the optimization made by the software
- Customizable output



## BTL import

Compatible with any CAD software

- BTL file import (ver 10.0 or superior)
- Possibility to manage the EasyWOOD features
- Manual machining application

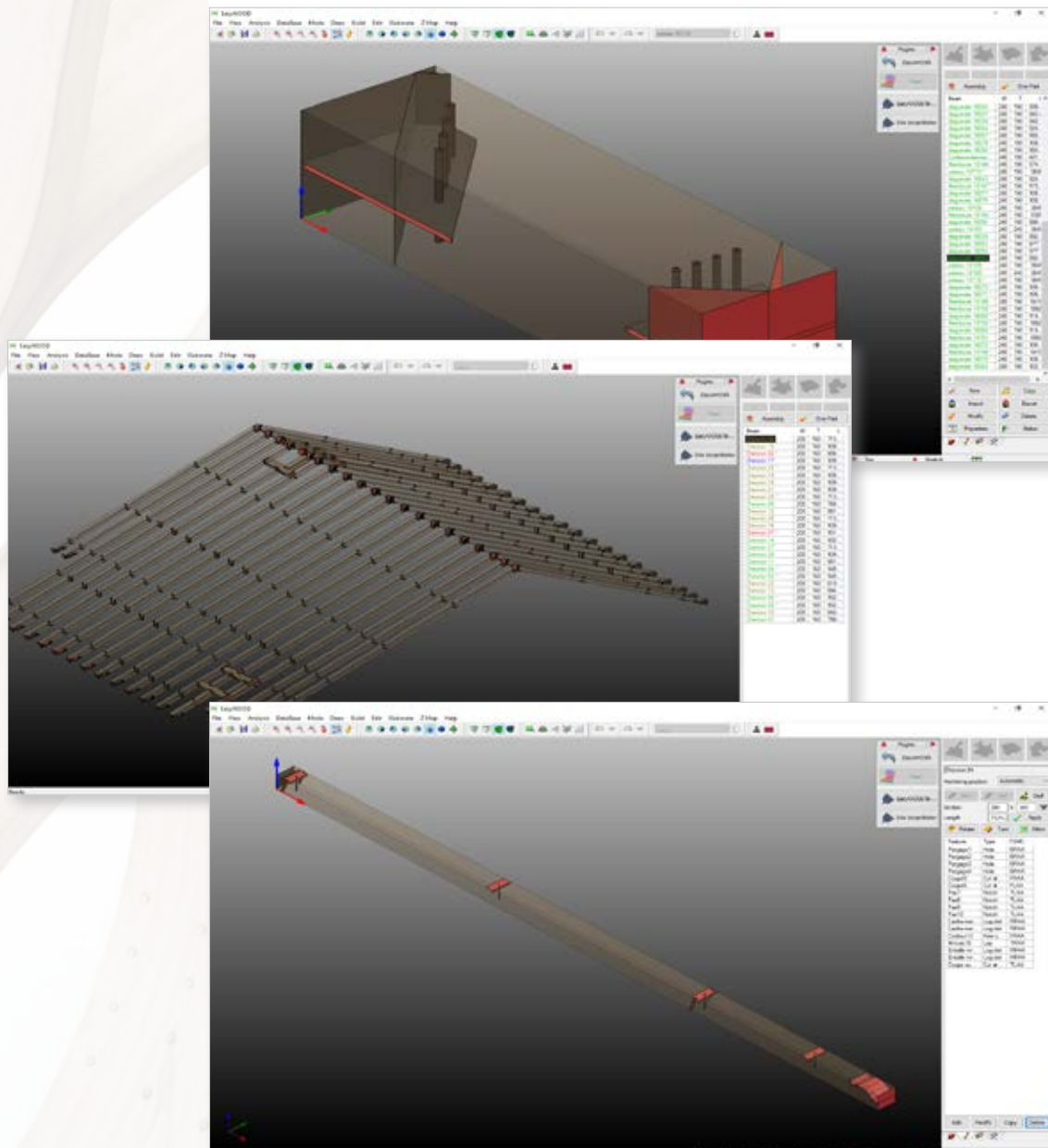


# Additional modules

## Beam

The additional module specific for beam, roofs and wooden structures production

- BTL import of wooden structures from any CAD software
- Automatic generation of beam machining
- Automatic disposition on the machine table
- 5 axis machining



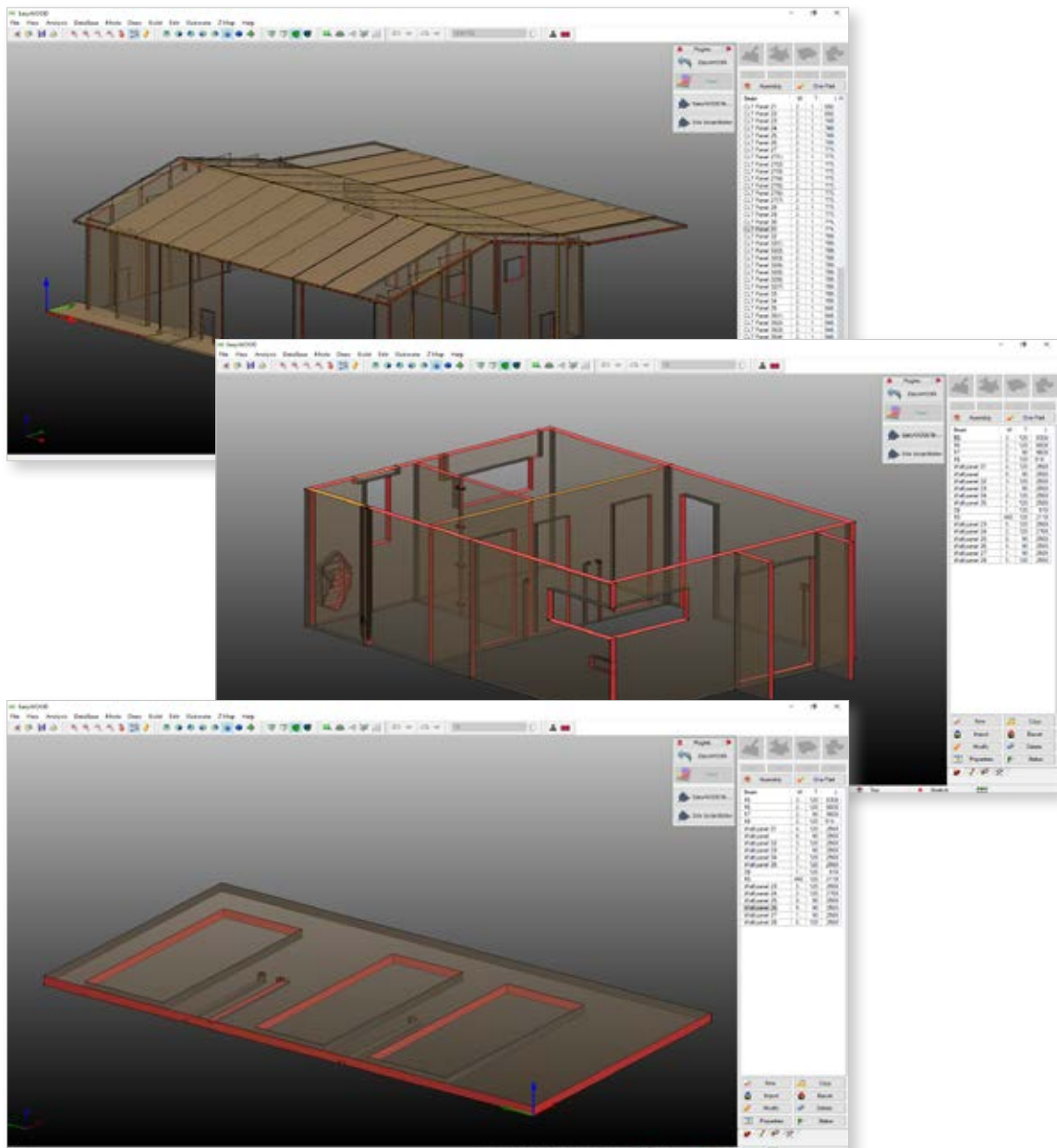
## Wall

The additional module specific for wall panels production

- BTL import of structures from any CAD software
- Automatic generation of machining for panels: XLAM, prefabricated, sandwich...
- Nesting True Shape

## Options

- Automatic Nesting True Shape



# Our Customers

## Meiken Lamwood Corp.

Japan [www.meikenkogyo.com](http://www.meikenkogyo.com)

Meiken Lamwood Corp., Japan's leading manufacturer of laminated lumber, is an outstanding example of a company that has profited from generating power from leftover wood, bark and other forest residues. The company embarked on its biomass business in 1998, when it invested to installation of a biomass boiler with a generating capacity of 1.950 kw.

Nowadays, Meiken can produce almost all of the power needed at its plant by itself and sell the surplus electricity, reducing its annual costs.

Cross laminated timber (CLT) is an engineered wood panel which has been developed in Europe. Each layer of boards is placed cross-wise to adjacent layers for increased rigidity and strength. Meiken Lamwood Corp is frontrunner company of development CLT with Japanese cedar and spreading CLT technology.



Product: EasyBEAM, EasyWALL, BeamPROD, WallPROD, Nesting, 3 licenses  
CNC machining centers: Uniteam

## WeberHaus

Germany [www.weberhaus.de](http://www.weberhaus.de)

The house of your dreams built with the environment in mind.  
WeberHaus has created more than 32.000 wooden houses since 1960 and it is one of the most famous company in this sector. Villas, bungalow, energy efficient houses.  
They focus on quality, energetic efficiency and sustainability.  
Their motto: Build your house as if it were theirs.



**WeberHaus**  
*Die Zukunft leben*

Product: EasyWALL, 2 licenses, automatic CAM, nesting  
High level of automation  
CNC machining center: WEEKE  
Project import from BOCAD and automatic production with manual modification

# Our Customers

## Ebert Schreinerei & CNC-Technik

Germany    [www.holz-ebert.de](http://www.holz-ebert.de)

Ebert makes projects with the highest geometric precision.

Milling, drilling, engraving, cutting machining tailored to customer's needs with their modern 5 axis CNC machining centre, which allow them the highest precision in the manufacturing of furniture, front doors, shelves and cabinets like:

- Wood panels
- Solid wood
- Composite materials
- Solid surfaces
- Several plastic materials



Product: EasyWOOD 5 axis, 1 license

CNC machining center: HOLZHER Pro-Master 7125

Automatic design of drawings and transmission to the CNC machining centre with less effort.

## LP Charpente & Eden Home

France [www.lpcharpente.com](http://www.lpcharpente.com)

LP Charpente builds three types of prefabricated timber houses:

- Houses with wooden substructure
- Houses with support beams
- Houses with timber cross-laminated walls

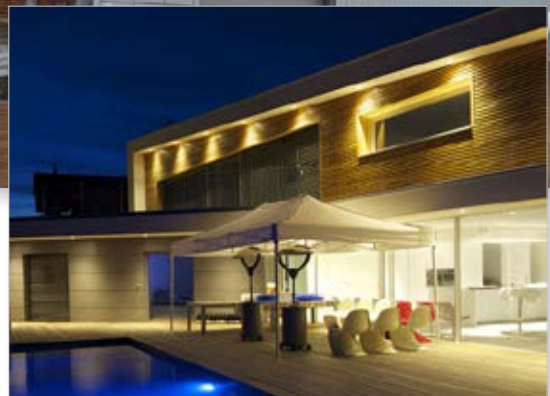
LP Charpente combines the latest generation CNC technology to the craftsmanship of finishing and manages the entire production process, from project check to the first assembly of the structure.

LP Charpente produces a wide range of beams, from the small ones for private customers to the bigger ones for the public market.

The company pays attention to environmental sustainability and uses timber from the surrounding area.

Eden Home is a company located in the Haute-Savoie specialized in the building of prefabricated timber houses.

Thanks to the long experience in the field of LP Charpente, Eden Home is able to provide turnkey prefabricated houses.



Product: EasyBEAM, EasyWALL, BeamPROD, Nesting, 1 license  
CNC machining center: Uniteam Ultra, Stromab US 27

# Our Customers

## Giorgetti S.p.A.

Italy [www.giorgetti.eu](http://www.giorgetti.eu)

Giorgetti is one of the industrial excellence of Italian design with collections of chairs/armchairs, tables, bookcases, furniture, beds and accessories designed by some of the most renowned project designers. Collaborations with designers, which began at the end of the 80s, gave Giorgetti the chance to create functional, contemporary pieces with an unmistakable style, integrating the highest artisanship with woodworking tradition, a long-time characteristic of the company, with the use of sophisticated tooling machinery and the most modern product technologies.

The innovative machinery used in producing the Giorgetti collections allows the wood to be shaped while respecting the nature of the wood, as well as guaranteeing an absolute precision in the details.

From design to production, Giorgetti takes pride in the fact that its creative and productive processes are exclusively Italian, so they can use the brand "Made and manufactured in Italy". A choice which allows the entire production process to be checked with respect for the environment as well as guaranteeing the creation of long-lasting furniture.



Product: EasyWOOD 5 axis, 1 license, Multi CNC machining centres control

CNC machining center: CMS Ares 5 axis, CMS 5 axis, CMS 4 axis

Automatic transmission to the CNC machining centre with the manual work of the master craftsmen who make each piece unique.

# Service and Assistance

DDX customers can count on a competent and reliable partner.

Our assistance service can be reached by phone and by remote support.

Software updates can be downloaded from our website [www.ddxgroup.com](http://www.ddxgroup.com).



# Partner

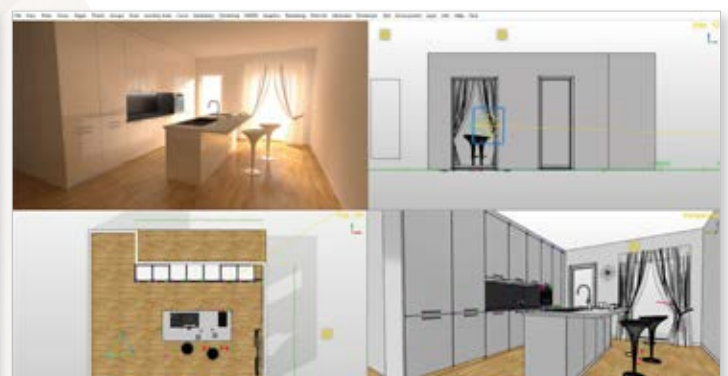
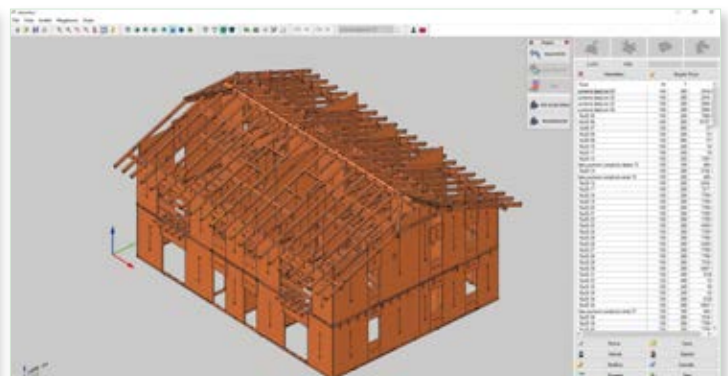
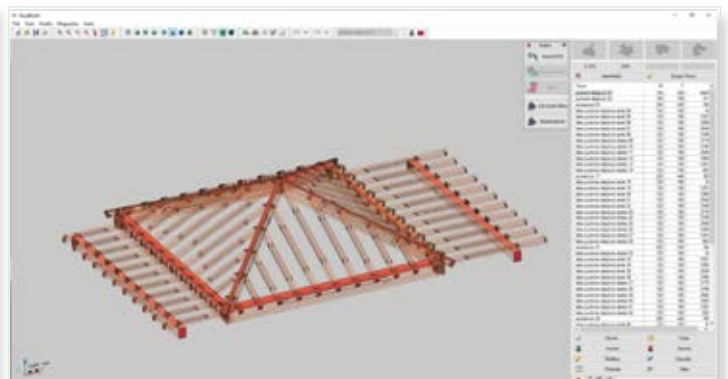
DDX is partner of the main CNC manufacturers:

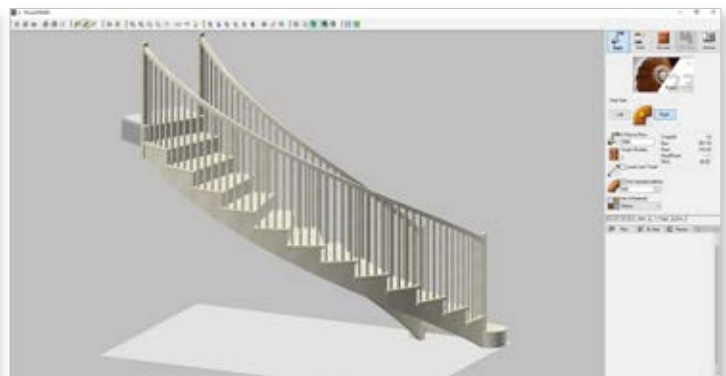
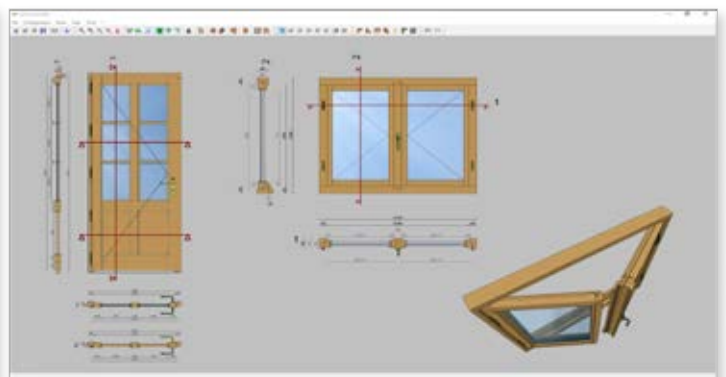


All trademarks or registered marks are the property of their respective owners, and are used for informational purposes only and the owner's benefit, without implying a violation of Copyright law.

# Other DDX products

Wood field





← DDX XFactory

Report Marina's garden

JOB	STARTING DAY	STARTING TIME	ENDING DAY	ENDING TIME	DURATION	STATE	LABEL
Sheet_11.67	14/09/2021	9:05	14/09/2021	9:13	8 min.	Sheet_11.107 Not printed Completed	Sheet_11.67 - Not printed
Sheet_11.68	14/09/2021	9:15	14/09/2021	9:25	10 min.	Sheet_11.108 Not printed Completed	Sheet_11.68 - Not printed
Sheet_11.70	14/09/2021	10:25	14/09/2021	10:37	12 min.	Sheet_11.110 Not printed Completed	Sheet_11.70 - Not printed



### **DDX Software Solutions**

Via Donizetti, 109/111  
24030 - Brembate di Sopra (BG)  
Phone +39 035 621093  
ITALY

### **DDX Deutschland**

Oeynhausener Straße 48  
32584 - Löhne  
Phone +49 573 26871710  
GERMANY

### **DDX Ibérica**

Gaspar Bravo de Sobremonte  
28341 - Valdemoro (Madrid)  
Phone +34 918 955675  
SPAIN

### **DDX France**

1 place Saint Martin  
79310 - La Boissière-en-Gâtine  
Phone +33 (0)5 49955279  
FRANCE