



# Super Sync

Product Knowledge Guide



# Table Of Contents

<b>Welcome To Matrix</b>	<b>3</b>
<b>Super Sync Key Features + Benefits</b>	<b>5</b>
<b>Super Sync Recommended Uses</b>	<b>6</b>
<b>Super Sync Decoded</b>	<b>7</b>
<b>Super Sync Clear</b>	<b>10</b>
<b>Super Sync Shade Chart</b>	<b>11</b>
<b>Refreshing Colour</b>	<b>12</b>
<b>Super Sync Super Coverage</b>	<b>13</b>
<b>Grey Coverage Decoded</b>	<b>14</b>
<b>Grey Coverage + Blending Best Practise</b>	<b>15</b>
<b>Colour Correction</b>	<b>16</b>
<b>Super Sync + Total Control Technologies</b>	<b>17</b>
<b>Tone-On-Tone Consultation</b>	<b>18</b>
<b>Super Sync FAQ</b>	<b>20</b>
<b>H+S</b>	<b>22</b>

# All Hair Types. All Humans.

At Matrix, we welcome all hair types and all humans.

That's why we work with our labs and network of stylists around the world to develop hyper-targeted solutions for each and every hair type—every level, underlying pigment, diameter, and pattern.





 matrix

# Super Sync

Super Protection & Super Coverage!  
Our **1<sup>st</sup> Pre-Bonded Alkaline Demi** For Instant  
Fiber Protection + Up To 75% Grey Coverage

No Ammonia\*



Vegan Formula\*\*

Up To 75% Grey Coverage

\* For a pleasant smell  
\*\*no animal derived ingredients or by-products

matrix

**Super Sync**  
Pre-Bonded

**No Ammonia  
Glossing Alkaline Demi**

up to 75% grey coverage  
fino al 75% di copertura dei capelli bianchi  
tot 75% grijsdekking  
couverture jusqu'à 75% de cheveux blancs  
bis zu 75% Weißhaarabdeckung  
تغطّي حتى ٧٥% من الشعر الأبيض

Senza Ammoniaca. Tono-su-tono  
Alcalina-Effetto Gloss. / Zonder ammonia  
Glanzende Alkalische Demi-kleuring. /  
Sans ammoniaque. Ton sur Ton Alcalin. /  
Ohne Ammoniak, für einen  
angenehmen Geruch. /  
تركيبة خالية من الأمونيا  
صبغة نصف دائمة تضيفي اللامعان على الشعر

1:1

90 ml e / 3.1 OZ

Conditioning  
Polymer

Bond Protective  
Citric Acid

Bond Protective  
Glycine

Long-Lasting  
Dyes\*

Glide  
Enhancing Oil

# Usage Recommendations

## Super Sync

- **Colour Touch Up + Refresh**

Matching, toning + refreshing permanent colour fade-out with low-commitment

- **Grey Coverage Up To 75%**

Translucent, coloured, or blended – always dimensional

- **Root Shadow**

Create depth at the root with your favorite melting techniques

- **Lowlights**

Add depth in select areas

- **Darken**

Add depth all over

- **Colour Correction: Filling + Overlay**

Depositing missing warm underlying tones + final end results back into over processed hair

- **Adding Or Neutralising Tone**

Change and adjust tones on same level



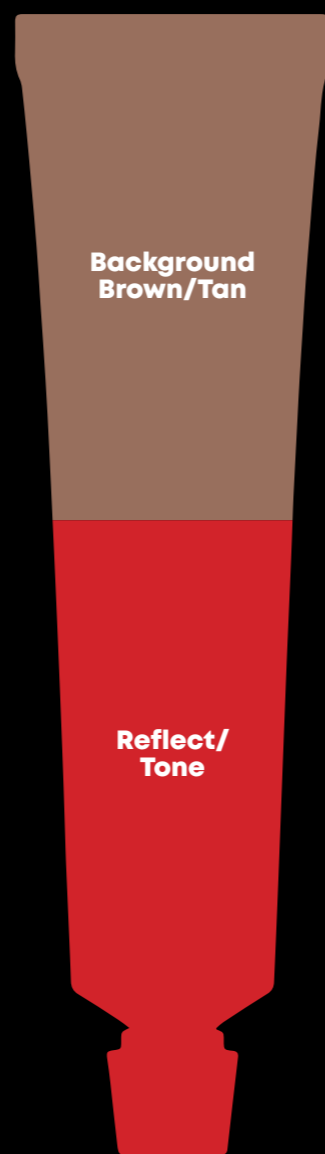
# Background Vs. Reflect

Decoding Super Sync



## Background Pre-Blended Natural

The brown to tan background in each pre-blended shade is the perfect balance of cool and warm tones to create a natural end result. Families in the Neutrals and Warms categories contain background.



## Blended Shades (Neutrals + Warms Collection)

All shades in the Warms and Neutrals collections will have both a Pre-Blended Background and Reflect. How much background or reflect is in each family or shade depends on how light or dark the shade is, and how the shade is formulated to function when used in different services.

Shades in these collections can provide up to 50% grey coverage, except for the NN's which can provide up to 75% grey coverage.



## No Background (Cools + Reflects Collection)

Most shades in these collections contain no brown-to-tan background, providing either maximum neutralisation or vivid reflects depending on the shade used and the starting point of the hair when applied.

These shades are not recommended for grey coverage.

Some families in the Cools (A) and Reflects collection (CG) will have some level of background, although the shades are formulated to provide mostly neutralising (cooling) or enhancing (warming) reflects.

# The Label

Decoding Super Sync



**10:** Indicates the level  
**N/.0:** Primary Tone  
**V/.2:** Secondary Tone

**Description**



Mix with any Super Sync shade to reduce its tonal deposit. Use alone to provide shine, and up to a level of lift without depositing any tone.



SP indicates the palest level of deposit without any pre-blended background tone.



The + indicates shade-specific technology for increased vibrancy and exceptional colour clarity.



HD indicates high definition pure reflects that are visible even on dark bases.

# Alpha-Numeric System

Decoding Super Sync



- .0 Neutral**
- .1 Ash**
- .2 Violet**
- .3 Gold/Warm**
- .4 Copper**
- .5 Mahogany**
- .6 Red**
- .7 Jade**
- .8 Mocha**
- .9 Pearl**

Cools		
Ash	A	.1
Titanium	T	.121
Pearl	P	.9
Violet	V	.2
Neutrals		
Mocha Mocha	MM	.88
Mocha	M	.8
Neutral Ash	NA	.01
Neutral Violet	NV	.02
Neutral Neutral	NN	.00
Neutral	N	.0
Warm Neutral	WN	.034
Warm		
Brown Red	BR	.56
Brown Copper	BC	.54
Red Brown	RB	.65
Gold Violet	GV	.32
Gold	G	.3
Reflects		
Copper Gold	CG	.43
Copper Copper+	CC+	.44
Red Copper+	RC+	.64
Red Red+	RR+	.66
Red Violet+	RV+	.62
Violet Violet	VV	.22

## ? FAQ

### Why is WN = .034?

WN is a heritage shade that provides a warm neutral reflect, hence the name. However, from a technical perspective the tonality provided is brown or light brown first, with warm golden-copper nuances in the back. If we were to give WN a numeric reflect of .30 to align with its name, that could give the impression that the shade is intensely gold rather than a warm neutral.



# High Definition Series\*

Super Sync Special Technologies

## HD-RV



- High Definition
- Pure Reflect
- Red Violet Tones
- Visible On Dark Bases

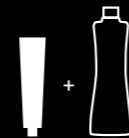
## HD-RR



- High Definition
- Pure Reflect
- Red Tones
- Visible On Dark Bases

### Best For:

- Vibrant red results
- Toning, enhancing + refreshing



### Mixing Ratio 1:1

Super Sync HD Shade + Matrix  
10 Volume (3%) Cream Developer

### Processing Time:

20 minutes room temperature

## What is it?

- High definition pure reflect red tones, zero background
- Not to be mixed with any other shade within the Super Sync palette
- HD Series is intermixable within itself

\*will not cover grey

# High Definition Series Tips

Super Sync Special Technologies

For longer lasting hold and more vibrancy there is HD technology. Although these shades cannot be intermixed with each other or with the shades from SoColor or Super Sync they can be diluted with Clear.

## Super Sync Technology

HD Shade	Intermix with	Clear
HD - RV	HD - R	✓
HD - R	HD -RV	✓
6RC+ (with HD Technology)	Use alone	✓
7RR+ (with HD Technology)	Use alone	✓

## Tips + Tricks:

HD shades very intense as a result there can stain the scalp in the skin. Apply with caution around the hairline. As with vibrant colours of this type there could be transfer onto towels

# The Power Of Super Sync Clear

Super Sync Special Technologies

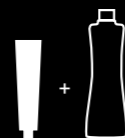


**Super Sync  
Clear**



**Best For:**

- Diluting the tonal deposit of **Super Sync** shades
- Adding shine



**Mixing Ratio 1:1**

Super Sync Clear + Matrix  
10 Volume (3%) Cream Developer

**Processing Time:** Up to  
20 minutes room temperature\*

Adding an equal amount of Clear to any Super Sync shade will lessen the colour deposit by roughly one level. Clear can also be used alone to provide shine, and up to a level of lift without depositing any tone.



—— **6G Alone**

—— **6G + Clear**

—— **Natural Hair Level**

\*Process for 20 minutes for longest lasting results  
\*\*Will not cover grey

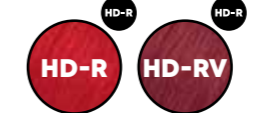
	Cools				Neutrals						Warms					Reflects						
	Ash .1	Titanium .121	Pearl .9	Violet .2	Mocha Mocha .88	Mocha .8	Neutral Ash .01	Neutral Violet .02	Neutral Neutral .00	Neutral .0	Warm Neutral .034	Brown Red .56	Brown Copper .54	Red Brown .65	Gold Violet .32	Gold .3	Copper Gold .34	Copper Copper+ .44	Red Copper+ .64	Red Red+ .66	Red Violet+ .62	Violet Violet .22
Sheer Pastel	SP-A		SP-P	SP-V		SP-M				SP-N												
11	11A		11P	11V																		
10	10A		10P	10V	10MM	10M			10NV		10N				10G							
9					9MM				9NA					9GV								
8	8A		8P	8V		8M			8NN	8N	8WN		8BC		8G	8CG						
7									7NA								7CC+		7RR+			
6	6A	6T	6P			6M			6NN	6N	6WN	6BR	6BC	6RB	6G	6CG		6RC+		6RV+		
5						5M			5NN	5N												5VV
4	4A											4BR										
3									3NN	3N												
2																						
1	1A																					

Up To 75% Grey Coverage

**Clear:** Use with other shades to reduce tonal deposit by approximately 1 level when mixed equally. Use alone to add shine without changing tone.



**HD Series:** High Definition, pure reflects that are visible on dark bases.



**HD-R** Shades with a HD-R icon contain HD-Red dyes & must not be mixed with any other shade besides Clear.

# Super Sync

**Decoding Super Sync**

10NV Extra Light Neutral Violet Blonde 10.02

10: Indicates The Level  
N/0: Primary Tone  
V/2: Secondary Tone

**Tone**

Neutral .0	Ash .1	Violet .2	Gold/Warm .3	Copper .4	Brown .5	Red .6	Jade .7	Mocha .8	Pearl .9
------------	--------	-----------	--------------	-----------	----------	--------	---------	----------	----------

1 Blue Black, 2 Black, 3 Dark Brown, 4 Medium Brown, 5 Light Brown, 6 Dark Blonde, 7 Medium Blonde, 8 Light Blonde, 9 Very Light Blonde, 10 Extra Light Blonde, 11 Extra Light Blonde

**Natural Level Underlying Pigment**

Darkest Red Brown, Red Brown, Dark Red, Red, Red Orange, Dark Orange, Orange, Dark Yellow, Yellow, Pale Yellow, Palest Yellow

**To Neutralize Use**

Darkest Cool Black, Cool Black, Darkest Cool Brown, Dark Cool Brown, Medium Cool Brown, Light Cool Brown, Dark Cool Blonde, Medium Cool Blonde, Light Cool Blonde, Extra Light Cool Blonde, Extra Light Cooler Blonde

**Mixing & Processing**

	Mixing Ratio:	Matrix Cream Developer:	Timing:	Apply To:	Process:
	1:1	10 Volume (3%)	20 Minutes	Clean, at least 80% dry hair or overly porous hair lightly misted with Instacure; For best grey coverage, apply to dry hair.	At room temperature. Do not use heat.

\*Shades shown on white. For illustration purposes only.

# Refreshing Colour

## Super Sync

### Rules For Refreshing

- 1 1–2 levels lighter than the permanent hair colour formula.
- 2 Choose the same tonal family or formulate slightly warmer than the permanent haircolour formula.
- 3 Process as needed, up to 20 minutes.

#### Base to Root:

#### Mids + Ends Super Sync Shade:

SoColor Blended Shade	Pre-Paired Super Sync Shade
SoColor Reflect Shade	Pre-Paired Super Sync Shade
SoColor HD Series	Pre-Paired Super Sync Shade
SoColor UL Series	Super Sync Sheer Pastels
SoColor 500 Series	Select Level + Tonal Series Based On Desired Result
SoRed Series	Select Level + Tonal Series Based On Desired Result



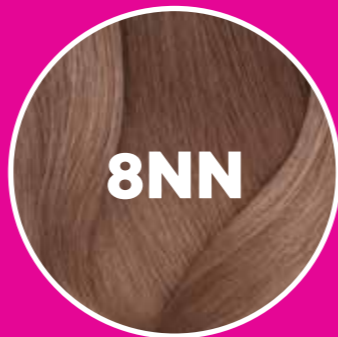
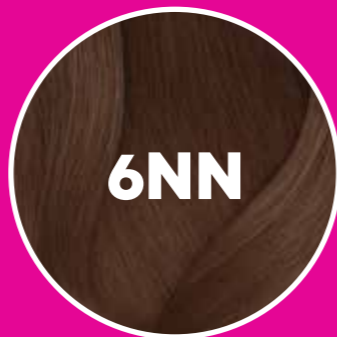
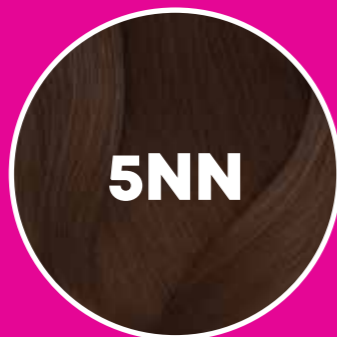
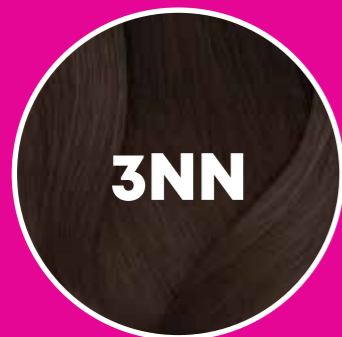
# Super Sync Super Coverage

Pre-Bonded Alkaline Tone-on-Tone

- ✓ **Super Coverage With NN Shades**  
Up to 75% grey coverage with new NN's and 10 volume in 20 minutes. At room temperate.
- ✓ **Triple Dye Blend Concentrate**  
Three super concentrated dyes balance and overlay cool and rich tones for richer background colour to cover greys, while maintaining dimensional effect. No helmet effect!
- ✓ **Super High Shine**  
2x more shine hair\*.

## Super Coverage Shades

Up To 75% Grey Coverage



\*vs. unwashed uncoloured hair

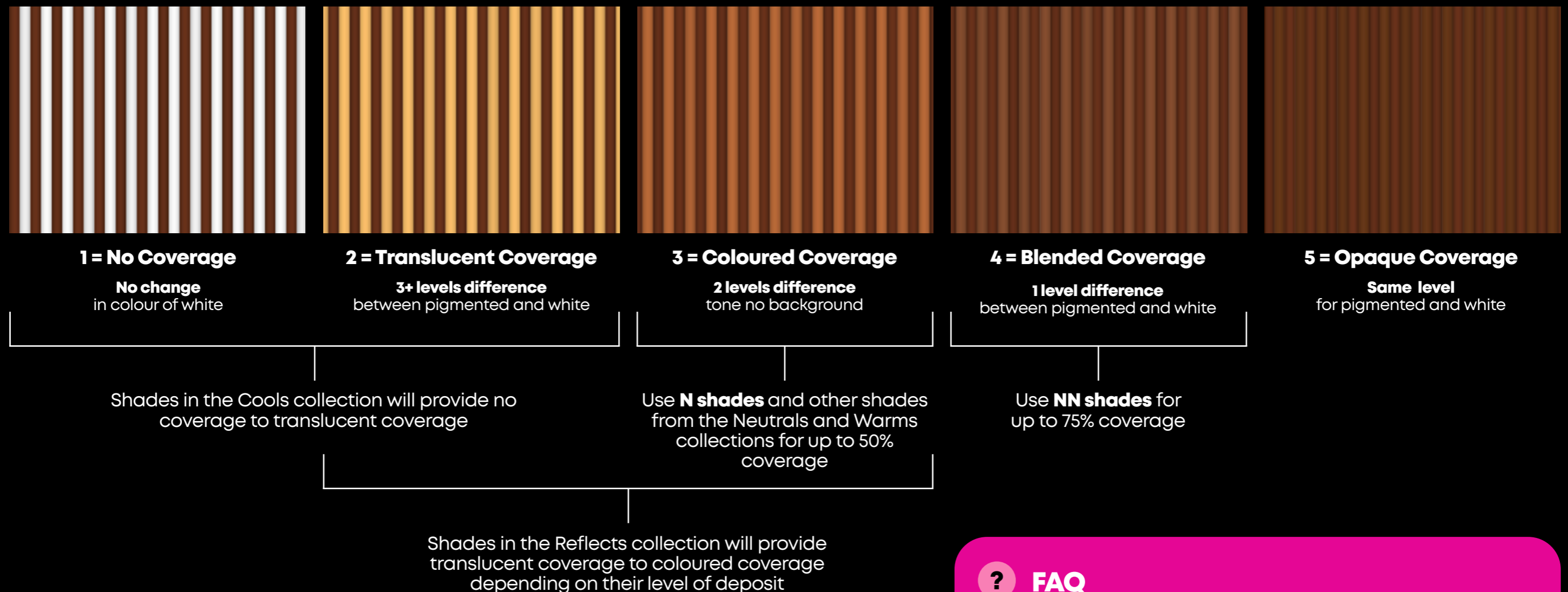
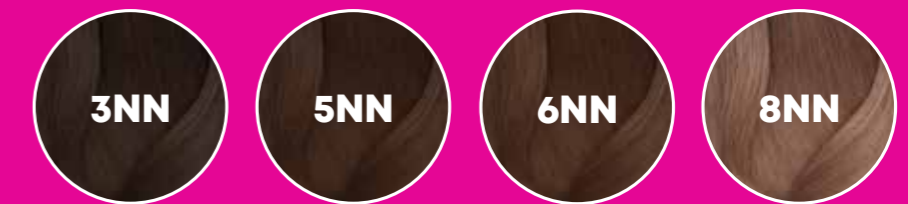
# Grey Coverage

## Decoding Super Sync

To cover grey means to minimise the contrast between natural hair and grey hair. To what degree that contrast is minimised is the difference between coverage that is translucent to coverage that is opaque and everything in-between.

### Super Coverage Shades

Up To 75% Grey Coverage



### ? FAQ

#### How are the Ns and the NN's different from each other?

Super Sync NN's are formulated to provide coverage on up to 75% grey. NN's are approximately 1/2 level deeper and slightly cooler than the N's. The NN's have a Triple Dye Blend concentrate. Three super concentrated dyes balance and overlay warm, cool and rich tones for richer background colour to cover greys, while maintaining multi-dimensional effect.

# Grey Blending Best Practices

## Decoding Super Sync

When formulating for grey hair we recommend formulating within one level of the natural pigmented hair, choosing a shade the same level or darker will give the most blended result.

### 75% Grey Blending

Natural Level	% Grey	Choose a shade	Mixing	Application	Process	Remove	Example 75% Grey Formulation
6	75%	5, 6 or 7 NN * NN shades are not recommended for refresh mids + ends. Reformulate for desired result.	1:1 10 Vol Matrix Cream Developer	Apply to grey hair.* If the mids + ends are previously coloured, reformulate to refresh for desired result.	At room temperature for 20 mins	Add water, emulsify, shampoo and condition with Matrix Haircare.	1 prt 6NN 1 prt 10 Vol Matrix Cream Developer

### 50% Grey Blending

Natural Level	% Grey	Choose a shade	Mixing	Application	Process	Remove	Example 50% Grey Formulation
6	50%	5, 6 or 7 * If your chosen shade is from the Reflects or Cools we recommend at least 1/2 of your formula is a Neutrals or Warm family shade	1:1 10 Vol Matrix Cream Developer	Apply to grey hair.* If the mids + ends are previously coloured, reformulate to refresh for desired result.	At room temperature for 20 mins	Add water, emulsify, shampoo and condition with Matrix Haircare.	1 prt 6N 1 prt 6CG 2 prts 10 Vol Matrix Cream Developer

### 25% Grey Blending

Natural Level	% Grey	Choose a shade	Mixing	Application	Process	Remove	Example 25% Grey Formulation
6	25%	5, 6 or 7 * If your chosen shade is from the Reflects or Cools we recommend at least 1/4 of your formula is a Neutrals or Warm family shade	1:1 10 Vol Matrix Cream Developer	Apply to grey hair.* If the mids + ends are previously coloured, reformulate to refresh for desired result.	At room temperature for 20 mins	Add water, emulsify, shampoo and condition with Matrix Haircare.	1 prt 6M 3 prts 6RV+ 4 prts 10 Vol Matrix Cream Developer

# Blended Grey Coverage

## Decoding Super Sync

### Ideal For Grey Blending – Up To 50% Grey

Color Family	Results On Grey	How To Adjust
Neutral	Cool Brown/Beige	No Adjustment Needed
Warm Neutral	Warm Brown/Caramel	No Adjustment Needed
Mocha	Warm Beige Mahogany	No Adjustment Needed
Gold	Soft Golden	No Adjustment Needed
Brown Red	Soft Red Brown	No Adjustment Needed
Brown/Blonde Copper	Soft Copper Brown	No Adjustment Needed
Red Brown	Soft Cool Red	No Adjustment Needed
Copper Gold	Soft Copper Gold	Add Neutral Or Warm Neutral In Same Proportion As % Of Grey

# Identifying Colour Correction

Super Sync Colour Correction

	Challenge	Recommendation
Mild	Overly lightened Highlights and porous blonde mids + ends	For overly porous hair, lightly mist with Instacure before application.
	Green tones on light blonde hair from swimming	After a Power wash with Light Master, choose a warmer formula to balance the hair and strand test before the application. Check during processing.
Moderate	New growth is lighter, brighter than the mids + ends	Select a formula that is the same level, 1 level darker or cooler than the mids + ends. Apply to the area that is too light and bright. Check during processing.
	Overly Highlighted or Monochromatic blonde hair that need dimension adding back in	Add dimensions by applying lowlights. Consider using warm shades such as WN, up to 2 levels deeper than the lightened hair.
	1 Step Colour back	Select a warmer shade up to 4 levels darker than the current hair colour and perform a strand test before full application.
Extreme	Hair is more than 2 levels lighter than the desired result	Refer to the Pre Fill Chart

# Corrective Guidelines

Super Sync Colour Correction

**Use Super Sync to fill or tint back the hair**

## Rules For Filling (Step 1 of a Tint-Back Service)

1. Fill the hair when desired hair colour level and current hair colour level are more than 2 levels apart.
2. Re-establish the hair's natural underlying pigment.
3. Filler formulas should be both warm and 1-2 levels lighter than the desired end result.

**Warm tones** (such as Gold and Copper) will help re-establish the hair's natural underlying pigment.

**For warm end results**, keep the filler formula warm.

**For neutral end results**, keep the filler formula balanced.

**For cool end results**, make sure the filler is less red.

## Sample Filler Formulas

Starting Level	Desired Level	Warm End Result	Neutral End Result	Cool End Result
8	4	6CG & 7CC+	6CG & 6WN	6G & 6WN
9	6	6CG & 8CG	6CG & 8WN	6G & 8G
10	8	8CG & Clear	8CG + 10G	8G & 10G

Mix with Matrix 10 volume (3%) developer in a 1:1 ratio process 10 minutes or until desired result is achieved. Rinse, cleanse lightly and towel dry. Follow with overlay.

\* This is a guide; we recommend a strand test for your chosen formula.

## Overlay (Step 2 of a Tint-Back Service)

The overlay is the final formula used in a Tint-Back service. Use Super Sync as an overlay by choosing the desired tone and formulate up to 1 level lighter than desired.



# Super Sync + Tonal Control

Alkaline vs. Acidic Technologies



	Super Sync Alkaline Toners	Tonal Control Acidic Toners
Description	Formulated for seamless, blending results.	Formulated for long-lasting multi-dimensional results with no lift.
Exclusive Pre-Bonded Technology	✓	✓
Mixing Ratio (Colour : Developer)	<b>1:1 Super Sync or Tonal Control + 10 Volume (3%) Matrix Cream Developer</b>	
Processing Time	Up to 20 minutes at room temperature	
Usage/ Technology	<p><b>Great for clients who want to change their colour regularly</b></p> <p>Top Uses: Colour Refresh, Grey Blending, Pre-Toning, Gloss, Enhancing Colour, Lowlights, Darken, Filling, Adding or Neutralizing Tone</p>	<p><b>Great for clients who are pre-lightened regularly</b></p> <p>Top Uses: Toning, Colour Refresh, Enhancing Colour, Darken, Adding or Neutralising Tone</p>
Grey Blending	When formulating for grey blending on up to 75% grey hair, we recommend using NN shades.	Not recommended for grey blending.
Can Be Mixed With:	Only other Super Sync Shades	Only other Tonal Control Shades
Vegan	✓	✓



## Acidic Technology

- Multi-Dimensional
- Deposit Only
- No Chance Of Base Shift

## Alkaline Technology

- Blended
- Possible 1 Level Base Shift

# Consultation

Super Sync

Client Says...	You Think...	Super Sync Pre-Bonded	Tonal Control Pre-Bonded
I'm starting to notice some greys.	Grey Blending Service	✓	
I want highlights, and don't want them to be brassy.	Highlight + Tone Service		✓
I need my usual root touch up, and the rest of my hair is looking dull and faded.	Permanent Root Touch Up + Tone-on-Tone Refresh	✓	
My highlights are starting to disappear. I would like to see more dimension.	Low-light Service	✓	
My highlighted hair looks dull; I want more shine.	Toning Service		✓
I'm tired of my blonde. I'm ready to be brunette!	Tint Back / Colour Correction	✓	
I want to brighten my hair and I'm ready for a change.	All Over Colour	✓	
I want highlights with a soft grow-out.	Root Shadow	✓	✓

## Natural Underlying Pigment And Its Effect On End Results

All natural hair colour consists of two basic pigments: black-brown and red-gold. Together, these two pigments create the natural colours of hair. The proportion and type of pigments in a strand of hair determines whether the hair is dark or light and whether the hair is cool or warm. As hair colour is lightened, the warm natural underlying pigment colours of red, orange and yellow are revealed.

When using a permanent hair colour, the final result is a combination of the haircolour tone used and the natural underlying pigmentation of the hair. The hair colour tone you select must either neutralise and cool the underlying pigmentation or enhance and brighten it.

A fundamental rule of hair colour is that cool tones neutralise warm tones and warm tones neutralise cool tones. The cooler the tone, the more effectively it can eliminate warmth. In Super Sync the Ash, Titanium, Pearl and Violet tones are the colours that most effectively eliminate warmth. The following chart shows how the natural underlying warmth of the hair affects the final tone.

## Haircolour and Natural Underlying Pigment's Combined Result

Haircolour Tone Used	Tone of Natural Underlying Pigment	Combined Result
Warm	Warm	Warm-Warm
Neutral	Warm	Warm
Cool	Warm	Neutral
Cool/Cool	Warm	Cool

## Natural Colour Level



## Colour Wheel

The colour wheel shows the complementary relationships of the primary, secondary and tertiary colours. It also shows the warm and cool colours.



# Super Sync FAQ's

## **What does it mean to have up to 75% coverage? How does it compare to other shades?**

To cover grey means to minimize the contrast between natural hair and grey hair. To what degree that contrast is minimised is the difference between coverage that is translucent to coverage that is opaque and everything in-between.

- Use NN shades for up to 75% coverage (#4 Blended Coverage)
- Use N shades and other shades for the Neutrals and Warms collections for up to 50% coverage (#3 coloured Coverage)
- Shades in the Reflects collection will provide translucent coverage to coloured coverage depending on their level of deposit (#2-3 coloured Coverage)
- Shades in the Cools collection will provide no coverage to translucent coverage (#1-2 Translucent Coverage).

## **If You Mix Super Sync NN Shades With Other Super Sync Shades, Will It Compromise The Coverage?**

Yes, coverage can be compromised. For optimal grey coverage (up to 75%) use NN shades alone or mixed with one another.

## **How Are N's And NN's Different For Each Other?**

The NN's will be about ½ level deeper and slightly cooler than N's. The NNs have a Triple Dye Blend Concentrate: three concentrated dyes balance and overlay warm, cool and rich tones for richer background colour to cover greys, while maintaining multi-dimensional effect. No helmet effect!

## **Can Super Sync Still Be Applied On Damp Hair? Is There A Performance Difference On Damp Or Dry?**

Yes, Super Sync can still be applied to damp hair. However, our recommendation is that hair is clean and at least 80% dry before application. When applied to hair that is less than 80% dry results can be lighter and tonal deposit can be somewhat diluted. Longevity of results can also be compromised.

## **Can I Use Super Sync Following A Texture Service, Such As A Perm? Relaxer?**

Yes. Wait at least 2 weeks following a texture service before applying. Strand test for predictability of results.

## **What Is The Difference In colour Result Of W And G Shades?**

Just like in a jewelry store, there are many different kinds of 'gold'. You can find a wide array including white gold, yellow gold, rose gold, 24-carat gold, etc. All of these are gold, but with a secondary tone to provide nuance and enough of a shift to be able to tell the difference with the naked eye. The same is true here as we have multiple 'gold' or 'warm' shades in our palettes. A 'gold' (.3) shade will provide a yellow reflect, where a 'warm' shade will provide a rich, somewhat warmer yellow (.33 or .34).

### **What Is The Difference Between Super Sync Sheer Pastel (SP) Shades And 11-Level Shades From Tonal Control? Don't They Both Have Sheer Results? When Would I Use One Or The Other Following A Lightening Service?**

While the Super Sync Sheer Pastels and Tonal Control 11-level shades are similar in that they deposit a very light, sheer level of dyes, the difference between the two lies in the base of the formula. Super Sync is an alkaline-Tone-on-Tone and has the ability to provide up to 1-level of lift; Tonal Control is an acidic-Tone-on-Tone and only has the ability to deposit. Following a lightening service each can be used with different results. For example, following a highlight service where 50% of the hair remains natural and 50% is pre-lightened, Super Sync will not only tone the pre-lightened hair, but it can also bump the base of the natural hair. Its alkaline base can also help to even-out any small inconsistent results post bleaching. Tonal Control will act like a sheer veil and simply deposit on top of whatever lies beneath not break the base.

### **What Is The Difference Between A HD Vs. A + Shade?**

HD shades are high definition, very intense pure reflects that are visible even on dark bases. They use a true red HD-Red technology that when mixed with any other shade besides Clear or one-another can behave unpredictably.

The + shades use 3 different shade-specific technologies including HD-Copper, and 2 different HD-Red dyes (one more true red, the other more red-violet). These dyes make a part of the overall dye composition of the shade, which is primarily a traditional oxidative permanent hair colour. Depending on the shade, these dyes may be used alone or in combination with one another. The true red HD-Red dye used in two of the shades (6RC+ and 7RR+) is the same technology that is used with the HD shades and can be unpredictable when mixed with any other shade besides Clear.

### **Is Super Sync Vegan?**

Yes, Super Sync is vegan with no animal derived ingredients.



### **I use Matrix colour already, do I need to carry out a new Allergy Alert Test?**

Yes, for best practice and how to carry out an Allergy Alert Test scan the QR code and follow the protocol for the latest Allergy Alert Test Procedure.

### **Advisory Contact Details**

**UK:** 0800 0304 034

**ROI:** 1800 535 616

salonadvice@uk.loreal.com

# Reach All, Teach All

Education is the heartbeat of the Matrix brand. Whether you're fresh out of beauty college or looking to expand your skills, we offer online and hands-on education in multiple formats so you have education for all hair types and patterns at your fingertips 24/7.



Scan me for  
**EduVibes**



Scan me for  
**Super Sync  
Learning Plan**

Access Booking  
**0800 028 3448**

