



Also in the FabLab range:



Create **FAB**
Neon & Glow in
the Dark Looks!



Jelly Glow Jewellery

Instructions



See our full range of toys and gifts at: www.playmonster.co.uk

Designed and manufactured by: PlayMonster UK Ltd, Artisan, Hillbottom Road, High Wycombe, HP12 4HJ.
Please retain our address for future reference. The FabLab© trademark is registered in the UK to PlayMonster UK Ltd. Made in China. Copyright ©2024 PlayMonster Group, LLC.

WARNING!

Only for use by children over 8 years old.

Adult supervision is recommended. Read the instructions before use, follow them and keep them for reference. This product contains a Button Coin Cell Battery. A swallowed Button or Coin Cell Battery can cause internal chemical burn in as little as two hours and lead to death. Dispose of used batteries immediately. Keep new and used batteries away from children. If you think batteries might have been swallowed or placed inside any part of the body, seek immediate medical attention.

Not suitable for children under 36 months due to small parts that may represent a choking hazard.

IMPORTANT: BATTERY INFORMATION

Retain this information for future

To Avoid Battery Leakage:

- Always follow the instructions carefully. Use only batteries specified and be sure to insert correctly by matching the + and - polarity markings.
- Remove exhausted or dead batteries from the product.
- Remove batteries if product is not to be played with for a long time.
- Do not short circuit supply terminals
- RECHARGEABLE BATTERIES: Always remove from the product before recharging. Recharge batteries under adult supervision. Non Rechargeable batteries are not to be recharged. DO NOT RECHARGE OTHER TYPES OF BATTERIES.



Contents

- A. 2x Part Jelly Setting Resin Packets (3x 15ml & 2x 20ml)
- B. 2x Bio-Glitter Silver & Blue Colours*
- C. Medium & Large Resin Moulds (Trinket Dishes & Ring Holder)
- D. 3x Coloured LEDs (Pendant/Hairclip/Bracelet)
- E. Star Magnet Key Ring
- F. 5x Glow in the Dark Blue Rings
- G. 5x Glow in the Dark Purple Hair Grips
- H. 5x Glow in the Dark Blue Pendants
- I. Jump Rings
- J. 30x Glow in the Dark Blue Beads
- K. 400mm Pink Necklace Cord
- L. 2x Sheets Glow in the Dark Resin Sticker Inserts
- M. Work Mat
- N. Gloves (not pictured)

*Eco-friendly cosmetic Bio-Glitter© designed to biodegrade quickly and safely in natural freshwater environments.

Before You Start

The rings, hair grips, pendants, and sticker inserts should be charged in direct sunlight or artificial light for 2-3 hours to glow their best. See page 11 for charging instructions.

scan for video



Creating The LED Light Up Bracelet Band

What you need:

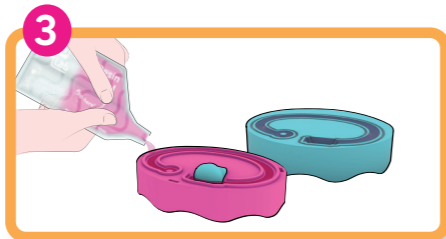
- Large Mould & Lid
- 20ml Gel Packet (Any colour you prefer)
- Glitter
- Resin Sticker Insert Sheet
- 1 Light Unit
- Scissors (not included)
- Teaspoon (not included)
- Tweezers (not included)

1

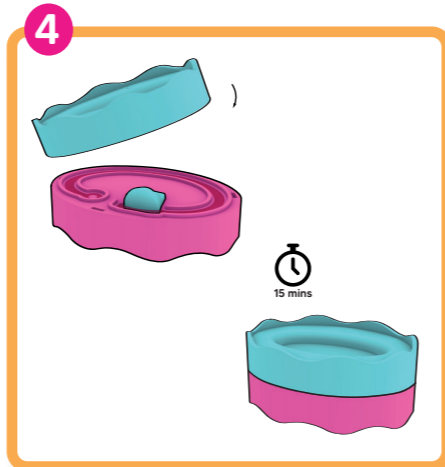
Begin by laying out the work mat to protect the table from unset resin (don't worry if you get any on a hard surface, you can let it harden for 15 mins and peel off). Gather all resources listed above and put on the gloves.



Pop the middle of the packet to mix the two gels together. Push the mixture back and forth from one side of the pack to the other at least 30 times to make sure the two gels are fully combined. Ask an adult for help, if needed.



Cut the end of the packet at the cut line and squeeze carefully into both halves of the moulds to the fill line. You can add glitter and stickers at this point if you'd like to. Try to spread evenly within the mixture. If you find this a bit fiddly, use tweezers or a cocktail stick.

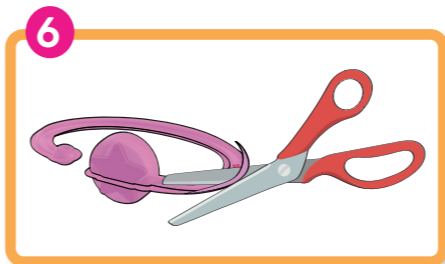


Once you've filled both sides leave for 4 minutes to allow the mixture to set very slightly. Do NOT leave the two sides separate for more than 4 minutes, otherwise the bracelet will harden in 2 parts.

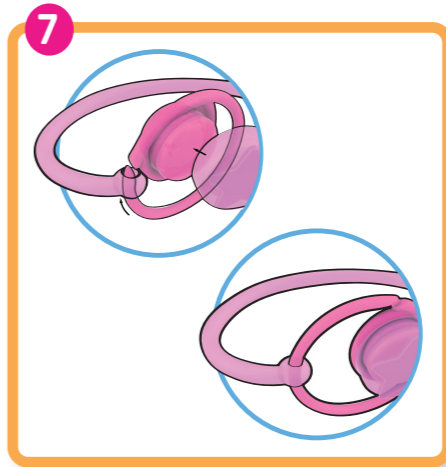
Then, lock the second half on top and into place. Leave to set up to 15 mins.



Pull the moulds apart. If you find this difficult you can squeeze the mould to help release the hardened bracelet slightly.



Once the side is off, peel the bracelet from the mould carefully. Cut off any excess material. Adult assistance may be required for trimming the bracelet.



Attach the largest point of the band onto the glow unit by pushing over the part labelled A and thread the other end on.



Using the key ring, activate the light by swiping over the unit and glow up!! You can change the flashing speeds by swiping over the unit.

Creating 3 Jelly Charms

What you need:

- Charms Mould & Lid
- 15ml Gel Packet (Any colour you prefer)
- Glitter
- Resin Sticker Insert Sheet
- Scissors (not included)
- Teaspoon (not included)
- Tweezers (not included)

1

Begin by laying out the work mat to protect the table from unset resin (don't worry if you get any on a hard surface, you can let it harden for 15 mins and peel off). Gather all resources listed above and put on the gloves.

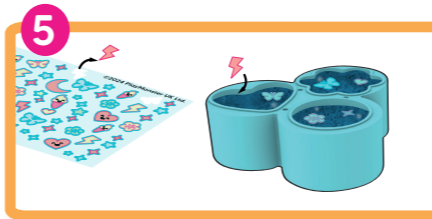
Pop the middle of the packet to mix the two gels together. Push the mixture back and forth from one side of the pack to the other at least 30 times to make sure the two gels are fully combined. Ask an adult for help, if needed.



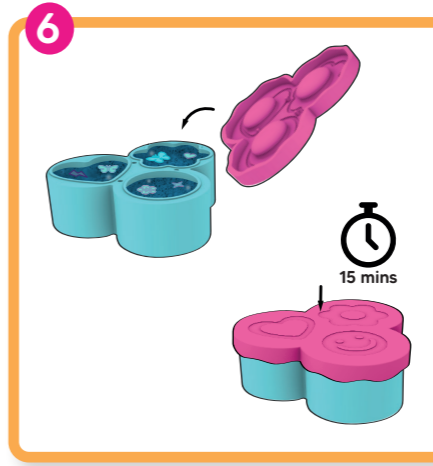
For this next part, you'll need to work quickly as the gel will start hardening once mixed. Cut the end of the sachet at the cut line and squeeze carefully into all 3 charm moulds up to the fill lines. Once the sachet is empty, dispose in the bin.



Using the end of a teaspoon, add the bio-glitter into each filled mould and stir in well.

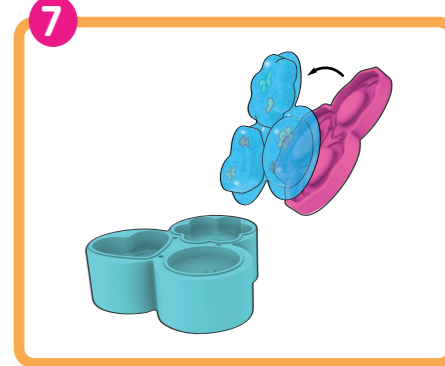


Carefully remove the glow-in-the-dark insert stickers from the sheet and push face down into the gel and arrange. If you find this a bit fiddly, use tweezers or a cocktail stick.

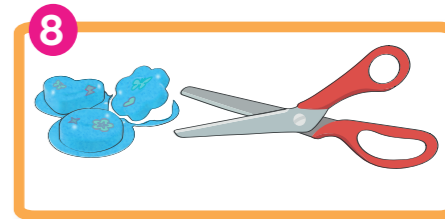


Pop the lid on top of the mould, ensuring the lip is facing down and the symbols and mould shapes match - allow to set up to 15 mins.

NOTE:
After 15 minutes, if you find the mixture is too runny, allow to set for another 2-3 minutes. If the pendants still feel a little sticky, pop them on a window sill for 5 minutes to cure fully in UV light.



Remove the lid from the mould. If you find this difficult, you can squeeze the mould and twist to help release the hardened jelly charms. Adult assistance may be required to gently remove them.



Once the lid is off, peel from the mould carefully. There might be excess material where you've pushed the lid, you can cut this off.

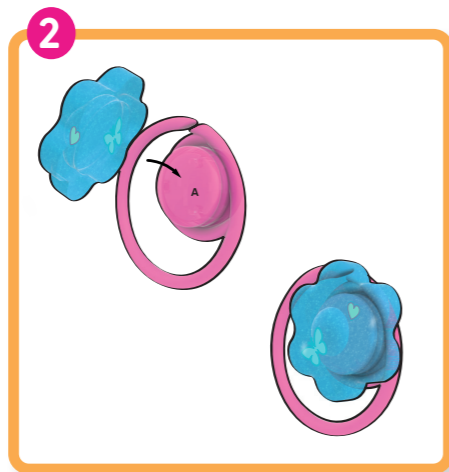
Assembling the LED Light Up Necklace

What you need:

- 3 Jelly Charms
- 1 Light Unit
- 2 Jelly Charm Connectors
- 4 Jump Rings
- Cord
- 2 Beads
- Scissors (not included)

1

To create the jelly charms, follow the instructions on page page 6-7.



Attach the first jelly charm onto the glow unit by pushing over the part labelled A.

3



Twist the ends apart to open up the jump rings and thread onto the hoops on the back of the pendants.

Next, push the other 2 jelly charms onto the charm connectors and attach to the LED unit with the jump rings.

4



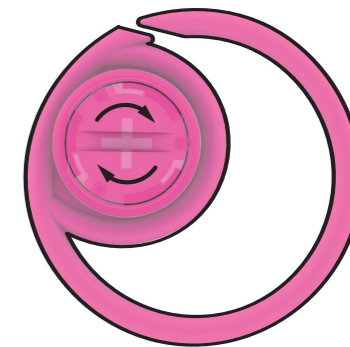
Cut a length of cord long enough for a necklace and knot to the light unit in the middle. Thread the beads on for extra glow and knot to keep in place.



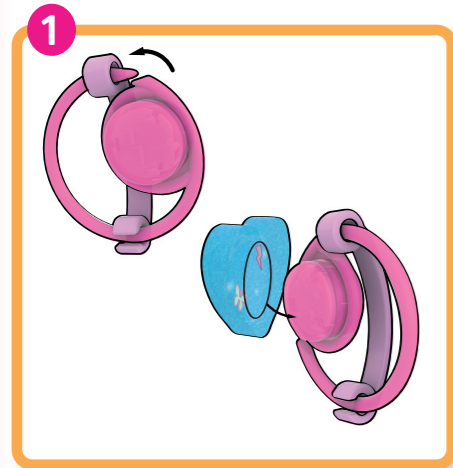
Using the key ring, activate the light by swiping over the unit.

How to remove batteries

Your LEDs should power down after 5 minutes automatically in order to preserve the battery life. However, if you need to replace the batteries (CR927 3V Button Cell), you can use a two pence coin and twist anti-clockwise to remove the cover.



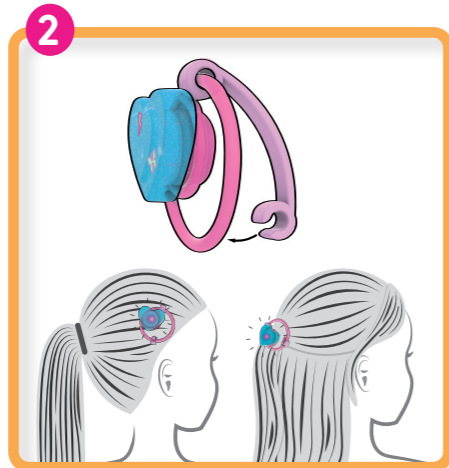
Assembling the LED Light Up Hair Clip



To create the jelly charm, follow the instructions on page 6-7.

Attach the hair clip attachment onto the light unit by threading through the open end and clipping the other side on.

Add the jelly charm onto the glow unit by pushing over the part labelled A.

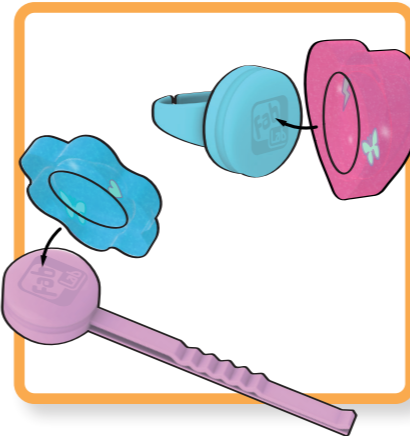


Clip into hair.



Using the key ring, activate the light by swiping over the unit.

Assembling the Glow In The Dark Rings, Hair Grips & Pendants



To create the jelly charms, follow the instructions on page 6-7.

For extra glow, charge your rings, hair grips, pendants, and sticker inserts under direct sunlight or an artificial light, such as a lamp, for 2-3 hours. This will help them glow better in the dark.

Attach the jelly charms onto the front and wear!

Rings, Hair Grips, and Pendants are not compatible with the LED lights.



Use the moulds as trinket dishes and ring holders!

Mobile Phone Holder

Included in your FabLab kit is a mobile phone holder, which lets you easily view our cool "how-to" videos packed with exciting content to discover new techniques and styles.



Simply place your phone into the holder and go to our channel at [youtube.com/fablabuk](https://www.youtube.com/fablabuk)

Share your favourite designs!

We would love to see your creations! Share your cool jelly glow jewellery with us on social media by mentioning or tagging [@playmonsteractivitiesuk](https://www.instagram.com/playmonsteractivitiesuk)