



Airbrush Styler

Instructions



See our full range of toys and gifts at: www.playmonster.co.uk

Designed and manufactured by: PlayMonster UK Ltd, Artisan, Hillbottom Road, High Wycombe, HP12 4HJ.
Please retain our address for future reference. The FabLab® trademark is registered in the UK to PlayMonster UK Ltd. Made in China. Copyright ©2024 PlayMonster Group, LLC.

WARNING!

Only for use by children over 8 years old.

Not suitable for children under 36 months due to small parts that may represent a choking hazard. Adult supervision is recommended. Read the instructions before use, follow them and keep them for reference. **We recommend testing by applying adhesive to a small area of the arm and leaving for half an hour before applying tattoos.** If the adhesive causes redness, inflammation, or soreness, wash off immediately and do not apply glitter tattoos to your skin. Do not apply glue or glitter close to the eyes or mouth. Do not swallow or inhale the glue or glitter. Use contents within 6 months of opening the individual containers. In case of an adverse reaction, wash off immediately with soap and water, and rinse the affected area well with plenty of clean water. If swallowed: Do not induce vomiting. Drink some fresh water and seek medical advice should you suffer any symptoms.

In case of eye contact: Wash out eye with plenty of water, holding eye open. Seek immediate medical advice. Clean any spills with kitchen paper and clean water. Dispose of any surplus materials in the household waste.

ADVICE FOR SUPERVISING ADULTS: THIS TOY IS FOR USE ONLY FOR CHILDREN OVER THE AGE OF 8 YEARS. READ AND FOLLOW THESE INSTRUCTIONS, THE SAFETY RULES AND THE FIRST AID INFORMATION AND KEEP THEM FOR REFERENCE. INCORRECT USE OF CHEMICALS CAN CAUSE INJURY AND DAMAGE TO HEALTH. ONLY CARRY OUT THOSE ACTIVITIES WHICH ARE LISTED IN THE INSTRUCTIONS. BECAUSE CHILDREN'S ABILITIES VARY SO MUCH, EVEN WITHIN AGE GROUPS, SUPERVISING ADULTS SHOULD EXERCISE DISCRETION AS TO WHICH ACTIVITIES ARE SUITABLE AND SAFE FOR THEM. THE INSTRUCTIONS SHOULD ENABLE SUPERVISORS TO ASSESS ANY ACTIVITY TO ESTABLISH ITS SUITABILITY FOR A PARTICULAR CHILD. THE SUPERVISING ADULT SHOULD DISCUSS THE WARNINGS, SAFETY INFORMATION AND THE POSSIBLE HAZARDS WITH THE CHILD OR CHILDREN BEFORE COMMENCING THE ACTIVITIES. THE AREA SURROUNDING THE ACTIVITY SHOULD BE KEPT CLEAR OF ANY OBSTRUCTIONS AND AWAY FROM THE STORAGE OF FOOD. IT SHOULD BE WELL LIT AND VENTILATED AND CLOSE TO A WATER SUPPLY. THE WORKING AREA SHOULD BE CLEANED IMMEDIATELY AFTER CARRYING OUT THE ACTIVITY.

COSMETIC PEN INGREDIENTS: AQUA (WATER), PROPYLENE GLYCOL, TRIDECETH-8, (+/-), CI 77266, CI 42090, CI 19140, CI 17200, CI 16255.

AUTHORISED REPRESENTATIVE AND RESPONSIBLE PERSON IN THE EU (FOR THE PURPOSES OF TOY AND COSMETIC SAFETY DIRECTIVES): DELPHIC HSE (EUROPE) B.V., THE BASE B, EVERT VAN BEEKSTRAAT 104, SCHIPHOL, 1118CN, NETHERLANDS.

Contents

scan for video



Hairdressers Cape

Electronic Spray Airbrush

5 Hair Stencils

Paddle

10 Body Stencils

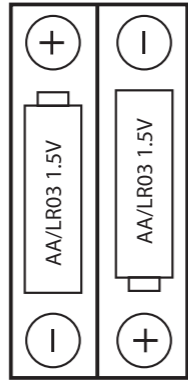
2 Hair Clips

6 Cosmetic Pens



Airbrush Setup

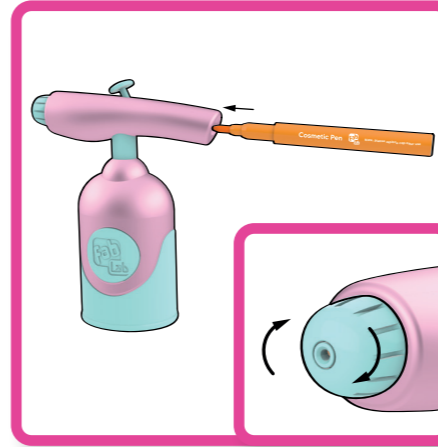
To get started, turn the airbrush unit over and unscrew the battery compartment. Insert x2 1.5v AA batteries. Replace the cover and screw back up.



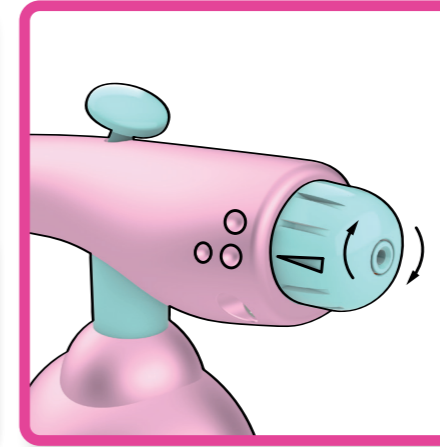
- Non-rechargeable batteries are not to be recharged.
- The rechargeable batteries should be charged under adult supervision
- Different types of batteries or new and used batteries are not to be mixed,
- Batteries are to be inserted with the correct polarity (+ and -)
- Exhausted batteries are to be removed from the toy.
- The supply terminals are not to be short-circuited.

IMPORTANT:

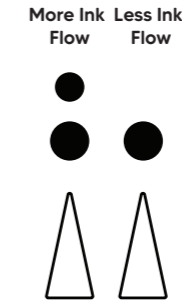
We provide protection for your clothes in the kit, but it might be best to prepare your workspace too. You can do this by working away from carpets and walls, or covering surfaces with old card or newspaper. The airbrush markers are washable but may stain certain soft furnishings.



Choose the colour you'd like to use and lock the pen into the open end. Make sure to push all the way in so the air flow can circulate properly around the nib.



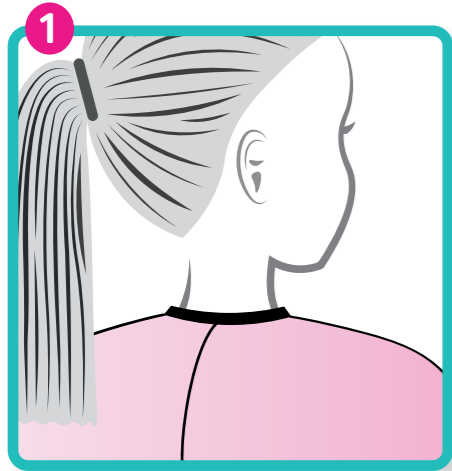
You can adjust the spread of the spray by twisting the nozzle.



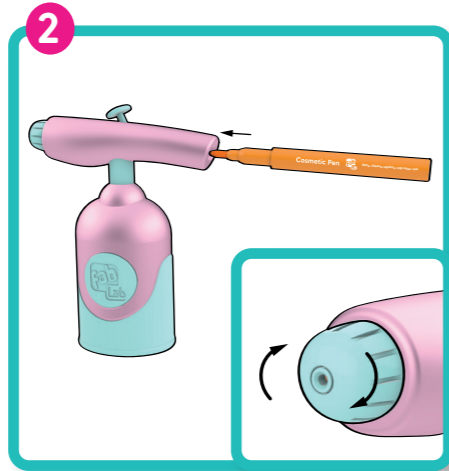
Ensure you have peeled the backing sheet off all small and large stencils before use.

We recommend having a quick practice using your airbrush on paper before you apply to your hair or skin, just so you can get a feel for it.

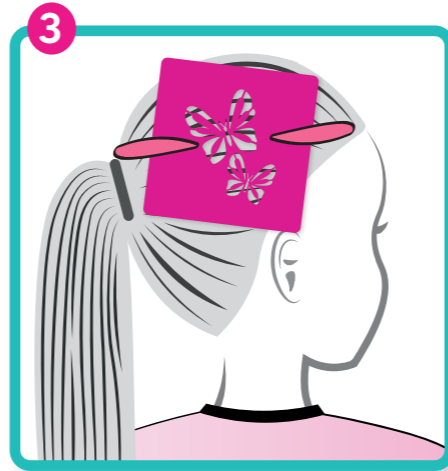
Hair Stencil Designs



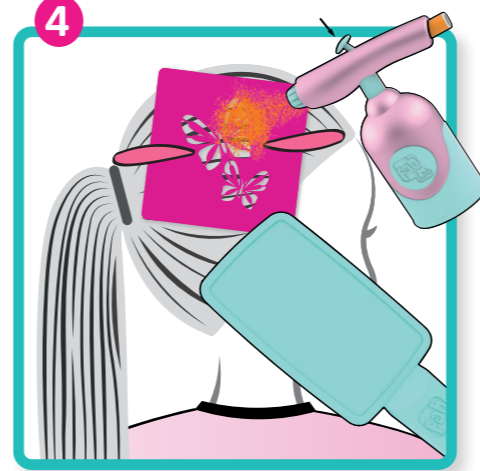
Begin by putting on the hairdressers' cape. This will protect your clothes from any over-sprayed ink. The cape can be secured with the Velcro fastening at the back.



Choose the colour you'd like to use and lock the pen into the open end of the Airbrush Styler, as shown on page 5.



Choose one of the large stencils and clip to a section of hair with clips. When using the stencils, we recommend applying onto straight hair. You can do this by tying up your hair and applying onto the top bit of your head or use hairspray when your hair is down to stop your hair from moving or splitting.



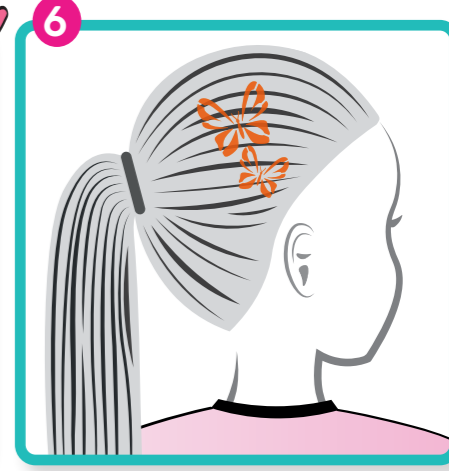
If applying to the front of your hair, hold the paddle underneath your hair to protect your face from any overspray. In the other hand hold the airbrush (approximately 10cm away from the stencil) and activate the spray by pushing on the button. Spray evenly and avoid going over the edge of the stencil. You can adjust the spread of the spray by twisting the nozzle.



Make sure you've applied colour to all edges of the stencil design. Remove the pen from the unit and replace cap. Allow to dry for at least 30 secs and remove stencil.

For younger stylers who may struggle with the designs:

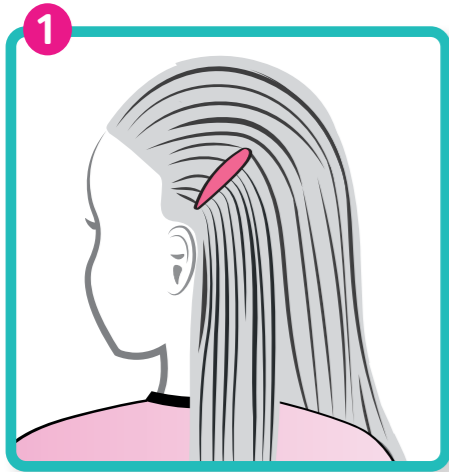
These cosmetic-grade pens can be applied directly to the hair in order to colour in the stencil without the airbrush tool.



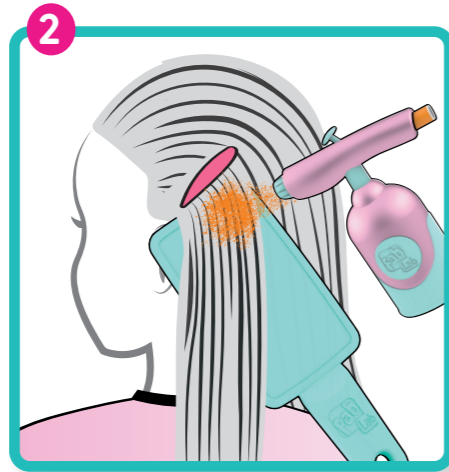
Your new look is complete! Repeat again in a different section of hair to apply more airbrush designs - you can even create your own designs by just pinning your hair in place and freestyling!

TIP:
If you're swapping between colours, spray a little bit onto paper before spraying onto your hair again, in case any ink residue is still on the tip of the airbrush unit.

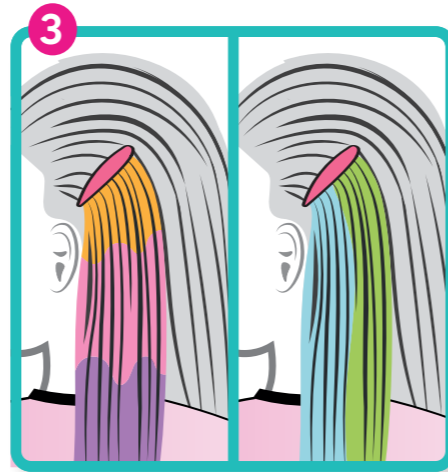
Hair Colour Streaks



Repeat steps 1 & 2 on page 6. Section off a part of your hair using clips.

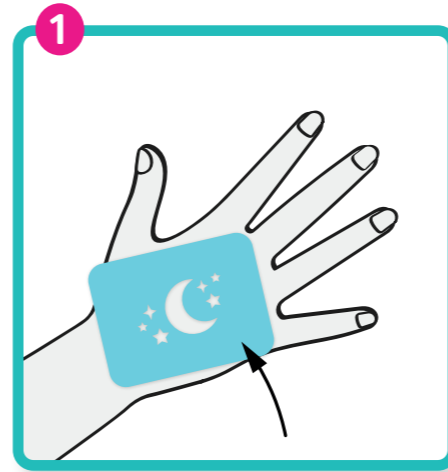


Hold the paddle behind your hair and spray evenly, start from the top and work your way down.



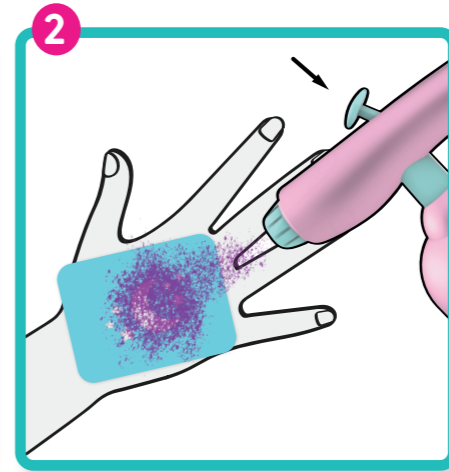
Swap out colours to create rainbow hair! Or create an ombre effect by starting with one colour at the top of your hair and then swapping to another. Allow to dry for 30 secs between each colour.

Body Art Stencils



Pick the colour you'd like to use and lock the pen into the open end of the pen holder.

Choose one of the small stencils and press down onto your skin, gloss side down. Make sure the stencil is flat against your skin with no bulging parts.



We recommend using the smaller stream mode on the nozzle when applying to your body. Spray evenly over the stencil (avoiding spraying over the edges) approximately 5cm away - you can use just one colour or use different colours to match the design or create an ombre effect! Try not to drench your skin in ink as this will cause the image to run at the edges.

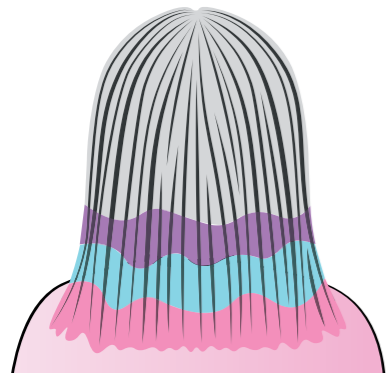


Carefully remove the stencil to reveal your design!

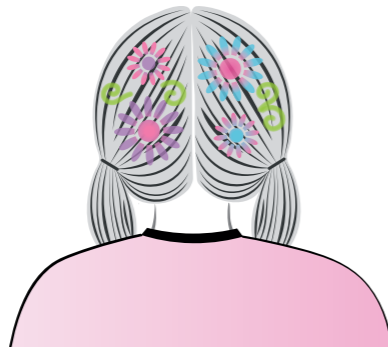
For younger stylers who may struggle with the designs: These cosmetic-grade pens can be applied directly to the skin in order to colour in the stencil without the airbrush tool.

Here are some of our favourite designs!

Ombre



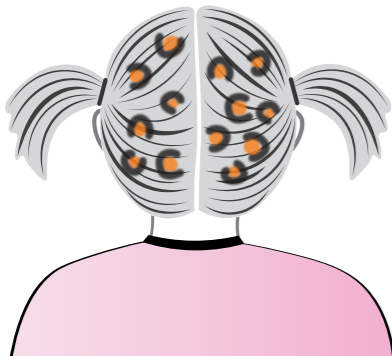
Flower Power



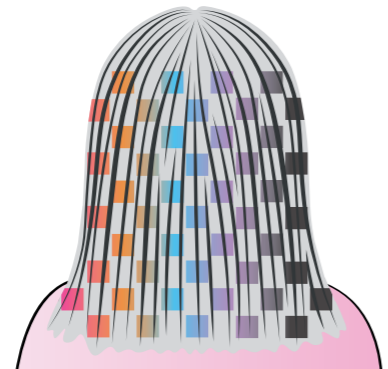
Rainbow after a Storm



Wild Thing



Check Mate

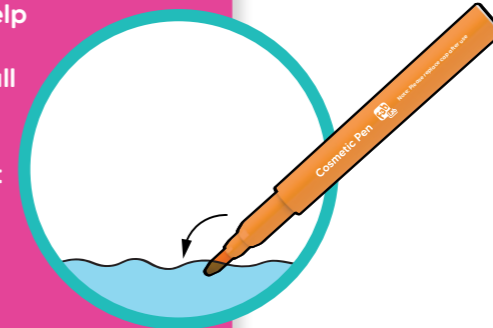


Squeeze the Day



Important Tips

- Due to the product function, it's important to avoid letting the pens dry out. This can be done by keeping the lids on the pens when not in use and removing the pen from the unit and replacing the cap every time.
- Don't worry if the pens do start to dry out. You can help moisten the pens again by dipping the nibs into a small amount of water for a few seconds and then wipe off any excess water with a bit of kitchen roll.
- **Pen refill sets are available from playmonster.co.uk**



Washing Off

The ink will wash out of your hair and skin using normal hair shampoo and soap in warm water. To wash the stencils, simply rinse under the tap and dry with kitchen roll or an old towel. Allow to dry before your next use.

Mobile Phone Holder

Included in your FabLab kit is a mobile phone holder, which lets you easily view our cool "how-to" videos packed with exciting content to discover new techniques and styles.



Simply place your phone into the holder and go to our channel at youtube.com/fablabuk

Share your favourite designs!

We would love to see your creations! Share your cool airbrush designs with us on social media by mentioning or tagging [@playmonsteractivitiesuk](https://www.instagram.com/playmonsteractivitiesuk)