



Project Name: \_\_\_\_\_

Location: \_\_\_\_\_

Item #: \_\_\_\_\_ Qty: \_\_\_\_\_

Model: \_\_\_\_\_

## FLOOR TYPE POTATO & VEGETABLE PEELER

MODEL:  XC-60  XC-60-T



XC-60(-T)

There's no substitute for quality in food or in finer machinery. 50-60lb capacity removes the thin outer skin of vegetables and saves all of the food value and flavor. Blakeslee's potato and vegetable peelers give you more for your dollar. They're built solid. Each component is perfectly honed and engineered to last for years. Blakeslee has built into our peelers extra protection for parts, greater safety for the operator, and superior construction for a unit that's built to last. This model includes a Stainless Steel Peel Trap.

*\* The T in the model number indicates a TIMER is included with this model.*

### FEATURES AND CONSTRUCTION

- 50lbs (23kg) - 60lbs (27kg) capacity in 1-3minutes
- 1 HP motor
- Easy to clean
- Adjustable 5-minute timer for single-phase units (XC-60T) or on/off switch for three-phase units (XC-60)
- Stainless steel exterior, drive shaft and strainer basket
- Cast aluminum discharge chute
- Motor and drive unit sealed off against moisture to assure trouble free performance
- Triple V-belt drive provides speed reduction between motor and abrasive peeling disc for efficient peeling action
- Standard size V-belt for easy replacement
- Self-closing door

### ELECTRIC

115V / 60Hz / 1Ph  
208-230V / 60Hz / 1Ph  
220-240V / 60Hz / 3Ph  
Cord and plug included

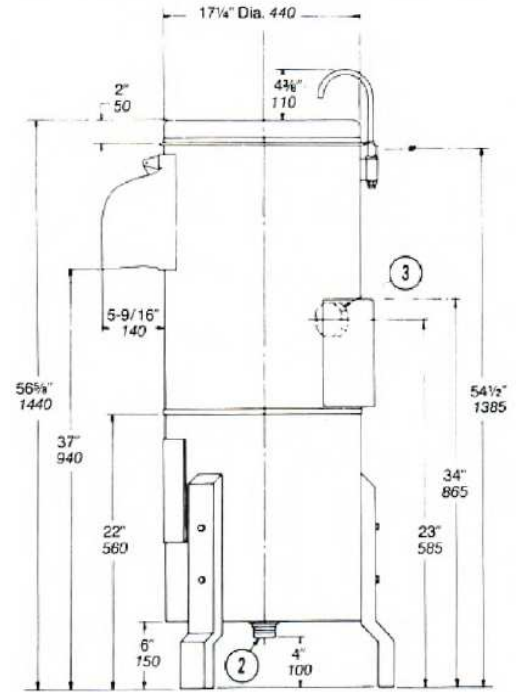
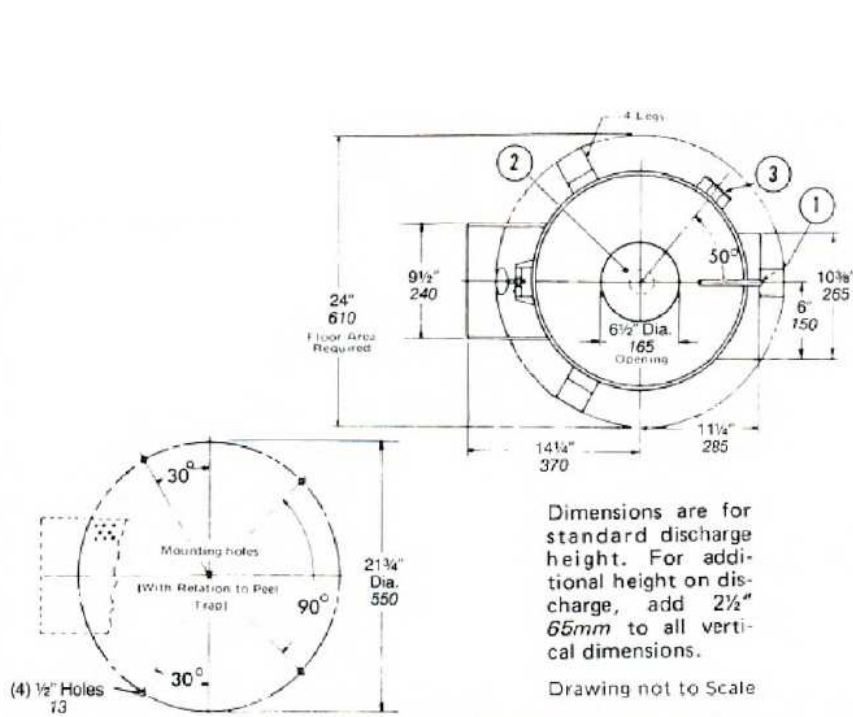
### 3RD PARTY APPROVALS



### BLAKESLEE WARRANTY (USA / CANADA)

Contact Blakeslee for warranty information.

Contact Blakeslee USA for details at [service@blakesleeinc.com](mailto:service@blakesleeinc.com) or 630.532.5021



NO.	CONNECTION	FITTING	FUNCTION
1	Cold Water	1/2" (13 mm) I.P.S.	Peel Flushing Spray
2	Waste-Sewer	2" (50 mm) Drain Tubing	Cylinder Drain
3	Electrical	1 HP Motor	3-Wire 3" (76 mm) Electrical Box

## APPROXIMATE SHIPPING SPECIFICATIONS

MODEL	UNIT DIMENSIONS	SHIPPING DIMENSIONS	ELECTRICAL	AMPS	UNIT WEIGHT	SHIPPING WEIGHT
XC-60(-T)	24" x 24" x 56.5" (610 x 610 x 1435 mm)	26.5" x 32.5" x 72" (673 x 826 x 1829 mm)	115V/60Hz/1Ph 208-230V/60Hz/1Ph 220-240V/6-Hz/3Ph	16A 8A 3.9A	170 lbs (77.2 kg)	194 lbs (88.1 kg)