

Click-Torque Lock C 3 R/L torque wrench, adjustable, Torque Lock function, internal square drive (1/2"), clockwise/anti-clockwise torque operation, 40-200 Nm, 1/2" x 40-200 Nm



| | | | |
|------------------------|---------------------------|-------------------------------|--------------|
| EAN: | 4013288233660 | Size: | 540x60x60 mm |
| Part number: | 05075695001 | Weight: | 1600 g |
| Article number: | Click-Torque Lock C 3 R/L | Country of origin: | TW |
| | | Customs tariff number: | 82041100 |

- For clockwise and counterclockwise operation
- Torque Lock function: The torque function can be deactivated so that the tool can also be used for loosening screws and bolts
- With square head insert (including patent-registered socket locking)
- Extra click: audible and tactile torque setting
- Torque wrench gives an audible and tactile signal
- Measuring range: 40-200 Nm; precision ± 3 % as per DIN EN ISO 6789-1:2017-07

Adjustable torque wrench for controlled clockwise and counterclockwise torque operation. With 1/2" square head drive. The torque function can be deactivated (Torque Lock function), so that the tool can also be used for loosening. Easy setting and saving of the default value. The audible and tactile clicks on reaching the scale values facilitate the safe setting of the desired torque value. The robust release mechanism guarantees a clearly audible and tactile release signal when the set torque value is reached. Fine-toothed reversible ratchet with 45 teeth. Accuracy of ± 3 % as per DIN EN ISO 6789-1:2017-07.



Web link

<https://www.wera.de/en/05075695001>

Wera - Click-Torque Lock C 3 R/L
05075695001 - 4013288233660

Wera Werkzeuge GmbH
Korzter Straße 21-25
D-42349 Wuppertal
Tel: +49 (0)2 02 / 40 45-0
E-Mail: info@wera.de

Click-Torque Lock C 3 R/L torque wrench, adjustable, Torque Lock function, internal square drive (1/2"), clockwise/anti-clockwise torque operation, 40-200 Nm, 1/2" x 40-200 Nm



Torque Lock function



The torque function can be deactivated so that the tool can also be used for loosening.

With external square head tip



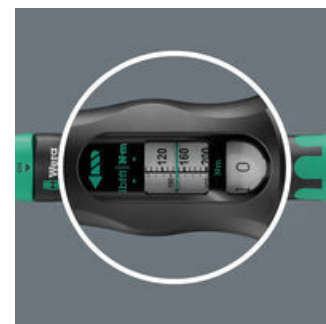
With square head insert (including patent-registered socket locking) for controlled clockwise and counterclockwise torque operation.

Exact



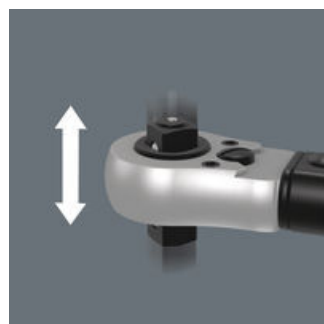
Precision of $\pm 3\%$ as per DIN EN ISO 6789-1:2017-07.

Easy and safe



Easy setting and saving of the desired torque value; easy to read on main and fine scales.

For right and left direction



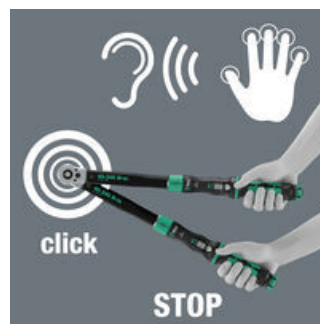
The Click-Torque torque wrench is suitable for clockwise and counterclockwise torque operation. Very smooth change of direction thanks to captive square head insert.

Setting with Speed



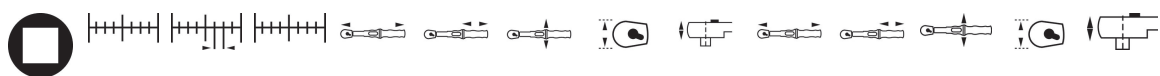
With audible and tactile locking when the scale values are reached.

Release mechanism



On reaching the desired torque value, an audible and tactile mechanism is triggered.

Further versions in this product family:



| | inch | Nm | Nm | lbf. ft. | mm | mm | mm | mm | mm | inch | inch | inch | inch | inch |
|-------------|------|--------|-----|----------|-----|-----|----|----|------|----------|--------|----------|----------|--------|
| 05075695001 | 1/2" | 40-200 | 1.0 | 30-146 | 512 | 140 | 47 | 43 | 18.4 | 20 5/32" | 5 1/2" | 1 27/32" | 1 11/16" | 23/32" |

Web link
<https://www.wera.de/en/05075695001>

Wera - Click-Torque Lock C 3 R/L
 05075695001 - 4013288233660

Wera Werkzeuge GmbH
 Korzter Straße 21-25
 D-42349 Wuppertal
 Tel: +49 (0)2 02 / 40 45-0
 E-Mail: info@wera.de