

Project: _____
 Location: _____
 Item #: _____ Quantity: _____
 Model #: _____

MODEL: IRR-AN23CR_BT
IRR-AN49CRBT / IR-AN67CR

Bottom mounted
Reach-In refrigerators & Freezers



General Strengths

- ✓ **Sanitation.** The interior cabinet is built with rounded corners (extensive radius for easy cleaning). Quick ability to take off shelves and slides for interior cleaning. Each cabinet has a drain at the bottom of the unit. When cleaning the unit make sure the drain hose is routed to a floor drain.
- ✓ **Doors.** Self-closing door system with permanent pressure. Stay open feature included when door remains open after 95 degrees. All doors include triple chamber door gaskets, easy to remove and snap in. Doors are field reversible.
- ✓ **Control systems.** Higher precision in managing temperature settings. Greater ability for the adjustment of temperatures ranges as per the end user's requirement.
- ✓ **100% Tested.** All condenser units are tested 100%, in helium chambers to refrigerant leak detections.
- ✓ **Certified.** Audited and Certified by **INTERTEK** for compliance with UL 471 and NSF 7. EQA audited and certified by internationally recognized firm. ISO 9001:2015 (Quality); ISO 14001:2015 (Environmental); ISO 45001:2018 (Prevention and Worker Safety)
- ✓ **Lighting.** LED lighting in cabinet sides reduces the energy consumption by 80% and 90% compared to a traditional bulb. Provides a much better light quality.



Review: 01 Date: 11/09/2023 IRT-AN23TF

ETL LISTED TO UL471 STANDARD AND SANITATION CLASSIFIED TO NSF7 – WE RESERVE THE RIGHT TO CHANGE SPECIFICATIONS WITHOUT PRIOR NOTICE



Project: _____
 Location: _____
 Item #: _____ Quantity: _____
 Model #: _____

MODEL: IRR-AN23CR_BT
IRR-AN49CRBT / IR-AN67CR

Bottom mounted
Reach-In refrigerators & Freezers

STANDARD FEATURES

➤ **Exterior**

- AISI 304 Stainless Steel.

➤ **Interior**

- AISI 304 Stainless Steel.
- Sealed interior floors and rounded cabinet corners.
- LED lighting.
- Internal drain plugs for easy cleaning.

➤ **Doors**

- Self closing door with stay open feature.
- Triple chamber snap in door gaskets for easy removal and cleaning.
- Field reversible door, parts not included.
- Door lock.
- Full-height door opening: 23" x 53" (584 x 1346 mm)

➤ **Insulation**

- Polyurethane with high density 40kg/m³, CFCs free, zero ODP and low GWP.

➤ **Shelving**

- (4) Plastic-coated extra-dense wire shelves per door with stainless steel tray slides included.
- Reinforced wire shelves.
- Tray slides are compatible with 18"x26" (457x660 mm) and 12"x 20" (305x660mm) sheet pans.

➤ **Casters**

- 4" diameter casters,
- Locks provided on front set.

➤ **Refrigeration**

- Digital temperature controller with automatic defrost system.
- Energy-saving non-electric condensate pan.
- Evaporator coil coated with anti-corrosion material 100% Polyester.
- Forced air refrigeration system.
- Electric fans.
- Refrigeration capacity:
IRR-AN23CR: 2120 Btu/h (14°F) / 621 W (-10°C).
IRR-AN49CR: 2120 Btu/h (14°F) / 621 W (-10°C).
IRR-AN65CR: 3427 Btu/h (14°F) / 1.004 W (-10°C).
IRR-AN23BTCR: 2949 Btu/h (-22°F) / 864 W (-30°C).
IRR-AN49BTCR: 4083 Btu/h (-22°F) / 1.196W (-30°C).

OPTIONAL FEATURES

- ✓ Stainless Steel wire shelf.
- ✓ Set of OK 6" legs, height adjustable from 5" to 8".
- ✓ Electrical connection is 230V / 1ph / 50 Hz (plug type varies).
- ✓ Slides Kits

➤ **Electrical**

- Cord and NEMA 5-15P plug,
- Electrical connection is 115 V / 1ph / 60 Hz.
- 20 AMP breakers required



Review: 01 Date: 02/05/2024 IRT-AN

ETL LISTED TO UL471 STANDARD AND SANITATION CLASSIFIED TO NSF7 – WE RESERVE THE RIGHT TO CHANGE SPECIFICATIONS WITHOUT PRIOR NOTICE



INFRICO – North America Corporate Division
 1409NW 84th Avenue, Doral FL 33126
 (305) 777 9599 ext.700 / f (305) 777 9598
 /Toll Free 855-340-4637

www.infrico.us
sales@infrico.com
service@infrico.com



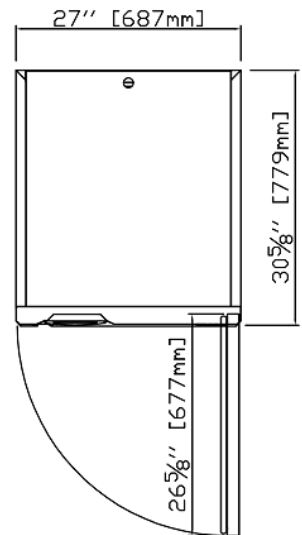
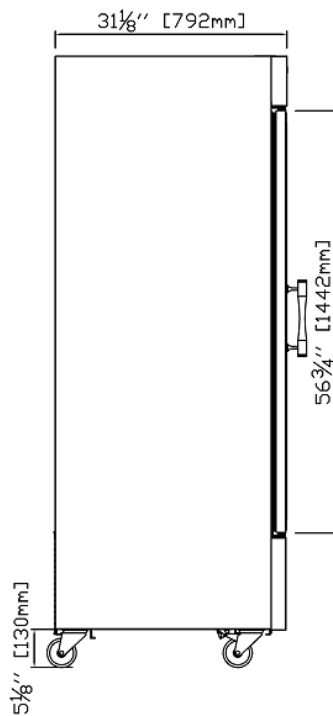
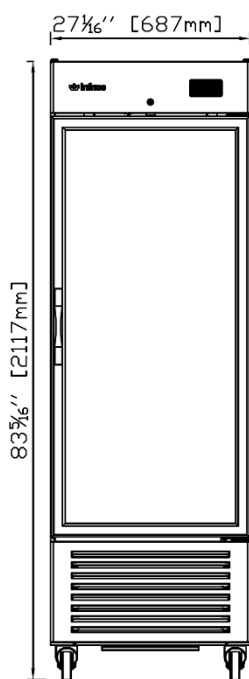
Project: _____
 Location: _____
 Item #: _____ Quantity: _____
 Model #: _____

MODEL: IRR-AN23CR_BT
IRR-AN49CRBT / IR-AN67CR

Bottom mounted
Reach-In refrigerators & Freezers

MODELS	Dimensions (inches) (mm)			Doors	Shelves	Ref.	Ref. Weight (Lbs.) (gr.)	Temperature Range (°F) (°C)	Cond. Unit (H.P)	Capacity (Cu.Ft.) (L)	Case Amps 115V	Net weight (Lbs.) (Kg.)
	W	D	H									
IRR-AN23CR	27-1/16 (687)	31-1/8 (791)	83-1/2 (2117)	1	4	R290	0,24 (110)	33°F / 38°F (0°C / 3°C)	1/3	23 (610)	4,87	440 (200)
IRR-AN49CR	27-1/16 (687)	31-1/8 (791)	83-1/2 (2117)	2	8	R290	0,26 (120)	33°F / 38°F (0°C / 3°C)	1/3	49 (1350)	4,99	680 (308)
IRR-AN67CR	54-1/2 (687)	31-1/8 (791)	83-1/2 (2117)	3	12	R290	0,31 (140)	33°F / 38°F (0°C / 3°C)	1/2	67 (1886)	8,03	900 (408)
IRR-AN23BTCR	27-1/16 (687)	31-1/8 (791)	83-1/2 (2117)	1	4	R290	0,28 (130)	-5°F / 0°F (-18°C)	1/3	23 (610)	8,25	462 (210)
IRR-AN49BTCR	82 (687)	31-1/8 (791)	83-1/2 (2117)	2	8	R290	0,33 (150)	-5°F / 0°F (-18°C)	1/3	49 (1350)	11,42	701 (318)

ELEVATION **RIGHT VIEW** **PLAN VIEW**



IRR-AN23CR_BT

Review: 01 Date: 02/05/2024 IRT-AN

ETL LISTED TO UL471 STANDARD AND SANITATION CLASSIFIED TO NSF7 – WE RESERVE THE RIGHT TO CHANGE SPECIFICATIONS WITHOUT PRIOR NOTICE



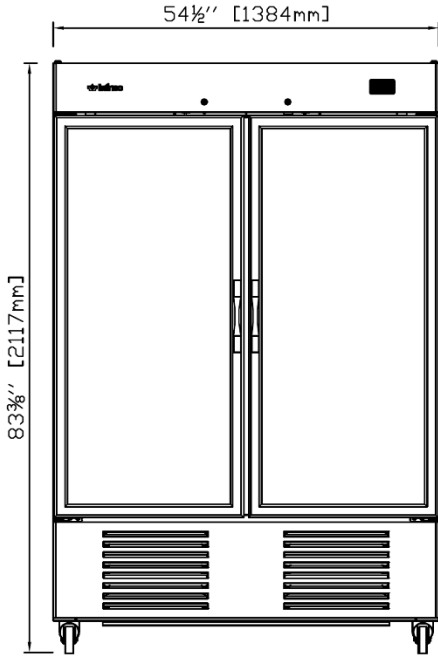
INFRICO – North America Corporate Division
 1409NW 84th Avenue, Doral FL 33126
 (305) 777 9599 ext.700 / f (305) 777 9598
 /Toll Free 855-340-4637

www.infrico.us
sales@infrico.com
service@infrico.com

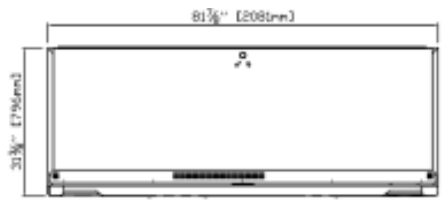
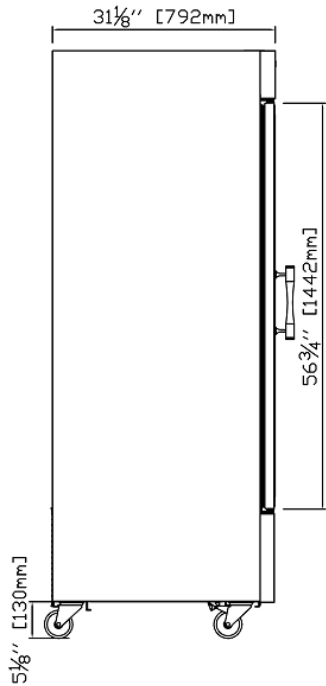
Project: _____
 Location: _____
 Item #: _____ Quantity: _____
 Model #: _____

MODEL: IRR-AN23CR_BT IRR-AN49CRBT / IR-AN67CR	Bottom mounted Reach-In refrigerators & Freezers
--	---

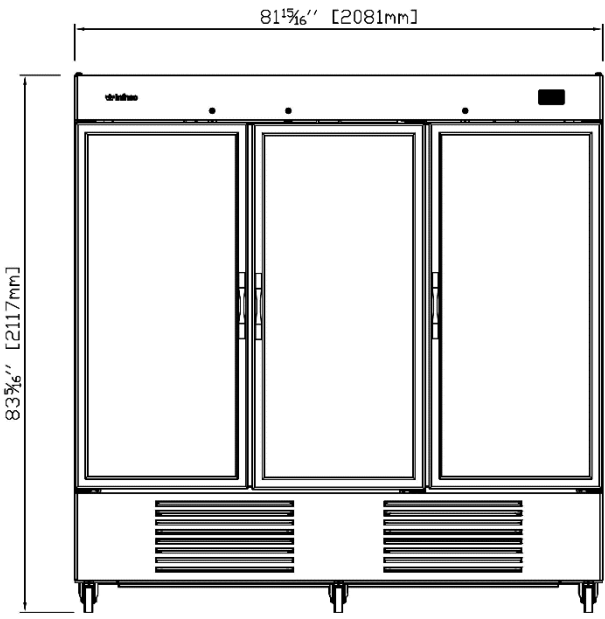
ELEVATION	RIGHT VIEW	PLAN VIEW
-----------	------------	-----------



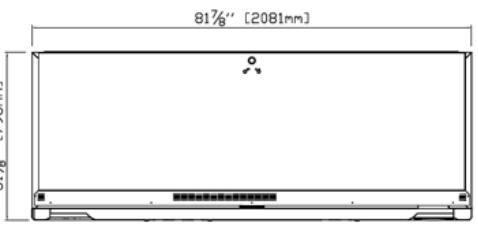
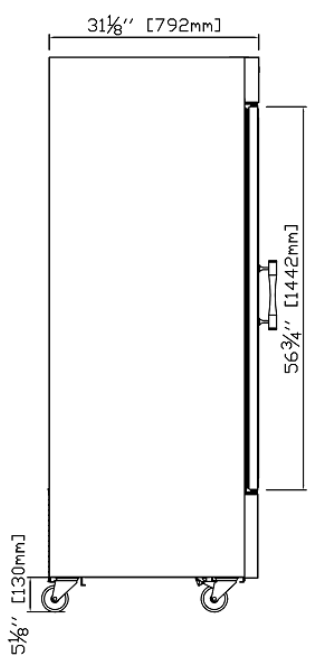
IRR-AN49CR_BT



ELEVATION	RIGHT VIEW	PLAN VIEW
-----------	------------	-----------



IRR-AN67CR_BT



Review: 01 Date: 02/05/2024 IRT-AN

ETL LISTED TO UL471 STANDARD AND SANITATION CLASSIFIED TO NSF7 – WE RESERVE THE RIGHT TO CHANGE SPECIFICATIONS WITHOUT PRIOR NOTICE



INFRICO – North America Corporate Division
 1409NW 84th Avenue, Doral FL 33126
 (305) 777 9599 ext.700 / f (305) 777 9598
 /Toll Free 855-340-4637

www.infrico.us
sales@infrico.com
service@infrico.com