

**MODEL: IRR-AGB45_96RI
 IRR-AGB45RT/IRR-AGB45_96_RIBT**

**Roll in & Roll Thru
 Refrigerators & freezers.**

GENERAL FEATURES



- ✓ **Higher energy efficiency.** R290 refrigerant with electric fans, LED lighting and evaporative tray without electric resistances.
- ✓ **Sanitation.** Our units feature hygienic design with rounded corners that have a large radius making them easy to clean. Additionally, the shelves and slides can be quickly removed for thorough interior cleaning. Each unit is equipped with a drain at the bottom to facilitate cleaning.
- ✓ **Doors.** Self-closing door system features a permanent pressure mechanism, ensuring secure closure every time. Additionally, a convenient “stay open” feature engages when the door remains open at 95 degrees or beyond. Our doors also include triple chamber door gaskets that are easy to remove and snap in, ensuring an effective seal.
- ✓ **Control System.** Our temperature management system offers unparalleled precision, allowing for highly accurate temperature settings. With greater flexibility in adjusting temperature ranges, our system can be tailored to meet the unique needs of each end user. This ensures optimal performance and maximum satisfaction with every use.
- ✓ **Lighting.** LED lighting in the canopy reduces the energy consumption by 80% to 90% compared to a traditional bulb, better light quality.
- ✓ **100% Tested.** All condenser units are 100% tested, in helium chambers for refrigerant leak detections.
- ✓ **Certified.** Audited and Certified by INTERTEK for compliance with UL 471 and NSF 7.



Review:01 Date: 11/17/2023 IRR-AGB_RI_RT_BT

ETL LISTED TO UL471 STANDARD AND SANITATION CLASSIFIED TO NSF7 – WE RESERVE THE RIGHT TO CHANGE SPECIFICATIONS WITHOUT PRIOR NOTICE

**MODEL: IRR-AGB45_96RI
 IRR-AGB45RT / IRR-AGB45_96RIBT**

**Roll in & Roll Thru
 Refrigerators & freezers.**

STANDARD FEATURES

➤ **Exterior and interior**

- AISI 304 Stainless Steel.
- Built with removable panel for easy installation (only IRR-AGB96RI/IRR-AGB96RIBT).
- Isolated lower side with 1+1/2" (40 mm) thick with ramp included.

➤ **Door**

- Polyurethane insulated door.
- Self – closing door with stay open feature.
- Heavy-duty hinges.
- Triple chamber snap in door seals for easy removal and cleaning.
- Full-height door opening: 27-5/8" x 72-7/8" (702x1851 mm).

➤ **Insulation**

- CFC- Free polyurethane insulation, entire cabinet structure is foamed-in using a high-density polyurethane insulation 3-1/8" (80 mm) thick.
- Low GWP & Zero ODP effect.

OPTIONAL FEATURES

- ✓ Electrical connection is 230 V / 1 ph / 50 Hz (Plug type and consumption varies).

➤ **Refrigeration**

- Digital temperature controller with automatic defrost system.
- **Compact refrigeration system Monoblock, INFRIBLOCK®.**
- Energy-saving non-electric condensate pan.
- Evaporator coil coated with anti-corrosion material 100% polyester.
- Forced air refrigeration system.
- **Refrigeration capacity:**
IRR-AGB45RI – 2.065 Btu/h (14°F) / **605 W(-10°C).**
IRR-AGB96RI – Btu/h (14°F) / **2 x 1.242 W(-10°C).**
IRR-AGB45RT – 2120 Btu/h (14°F) / **621 W(-10°C).**
IRR-AGB45RIBT – 4083 Btu/h (-22°F) / **1.196 W (-30°C)**
IRR-AGB96RIBT – 2 x 4083 Btu/h (-22°F) / **2 x 1.196 W (-30°C)**

➤ **Electrical**

- Cord and NEMA 5-15 plug.
- Electrical connection is 115V / 1ph / 60 Hz.
- 20 AMP breakers required.



➤ **ETL Listed to UL471 Standard and Sanitation classified to NSF7.**

MODEL: IRR-AGB45_96RI **Roll in & Roll Thru**
IRR-AGB45RT / IRR-AGB45_96RIBT **Refrigerators & freezers.**

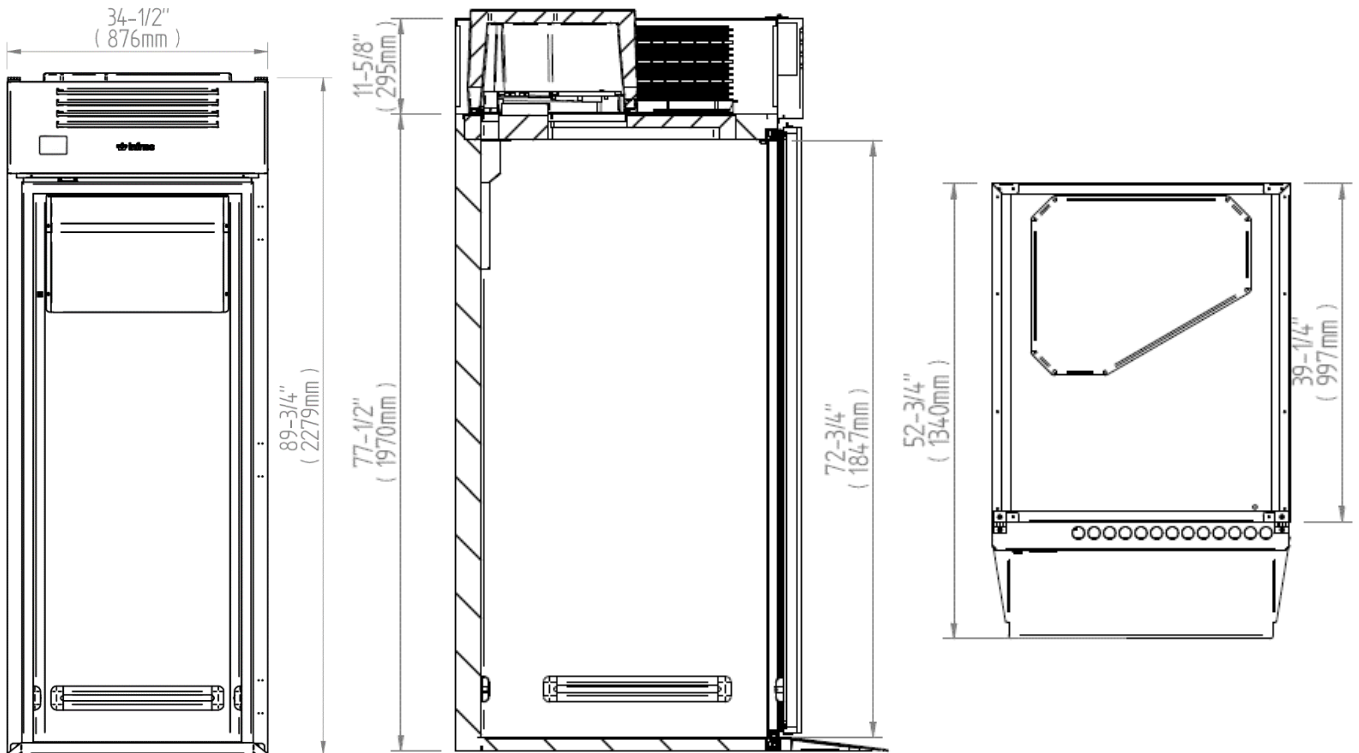
MODELS	Dimensions (inches) (mm)			Doors	Ref.	Ref. Weight (Lbs.) (gr.)	Temperature Range (°F) (°C)	Cond. Unit (H.P)	Capacity (Cu.Ft.) (L)	Case Amps 115V	Net weight (Lbs.) (Kg.)
	W	D	H								
IRR-AGB45RI	34-1/2 (876)	52-3/4 (1340)	89-3/4 (2279)	1	R290	0,31 (140)	32°F / 46°F (0°C / +8°C)	1/2	38,49 (1090)	4,76	579 (263)
IRR-AGB96RI	78-3/4 (2000)	52-3/4 (1340)	89-3/4 (2279)	2	R290	2 x 0,28 (2 x 130)	32°F / 46°F (0°C / +8°C)	1	102,27 (2896)	4,76	782 (355)
IRR-AGB45RT	37 (940)	52-3/4 (1340)	66 (1677)	2	R290	0,31 (140)	32°F / 46°F (0°C / +8°C)	1/2	38,49 (1090)	4,76	557 (253)
IRR-AGB45RIBT	34-1/2 (876)	52-3/4 (1340)	89-3/4 (2279)	1	R290	0,33 (150)	-0,40 °F (-18°C)	5/8	38,49 (1090)	10,47	579 (263)
IRR-AGB96RIBT	78-3/4 (2000)	52-3/4 (1340)	89-3/4 (2279)	2	R290	2 x 0,33 (2 x 150)	-0,40 °F (-18°C)	1-1/4	102,27 (2896)	10,84	782 (355)

PLAN VIEW

ELEVATION

RIGHT VIEW

PLANT VIEW



IRR-AGB45RI_BT

ETL LISTED TO UL471 STANDARD AND SANITATION CLASSIFIED TO NSF7 – WE RESERVE THE RIGHT TO CHANGE SPECIFICATIONS WITHOUT PRIOR NOTICE



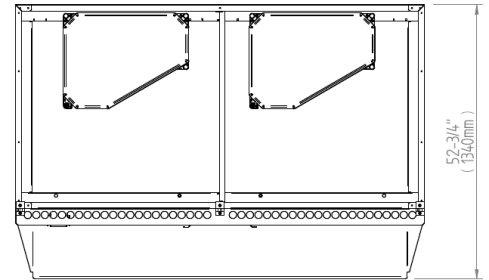
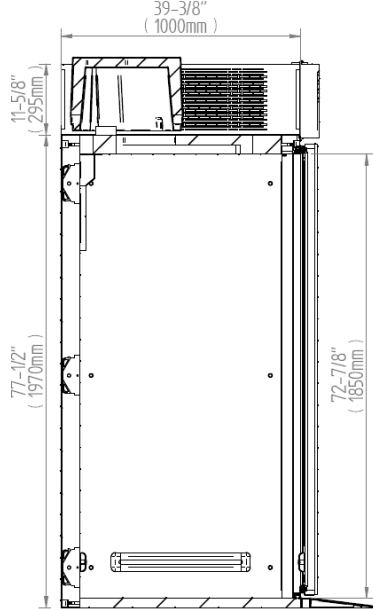
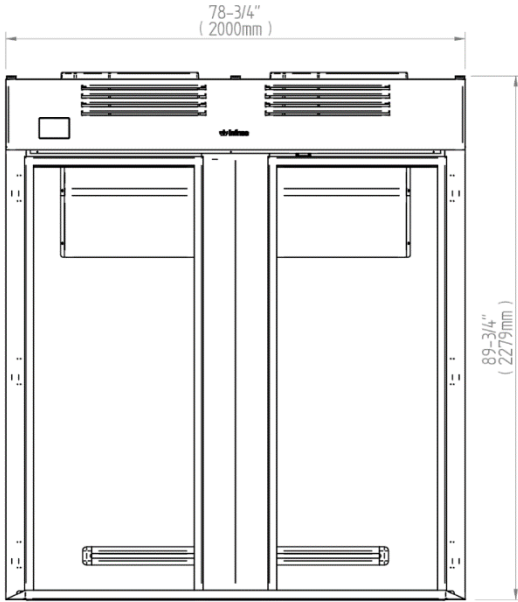
MODEL: IRR-AGB45_96RI
IRR-AGB45RT / IRR-AGB45_96RIBT

Roll in & Roll Thru
Refrigerators & freezers.

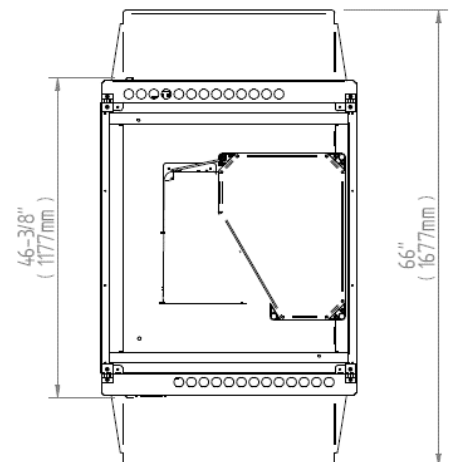
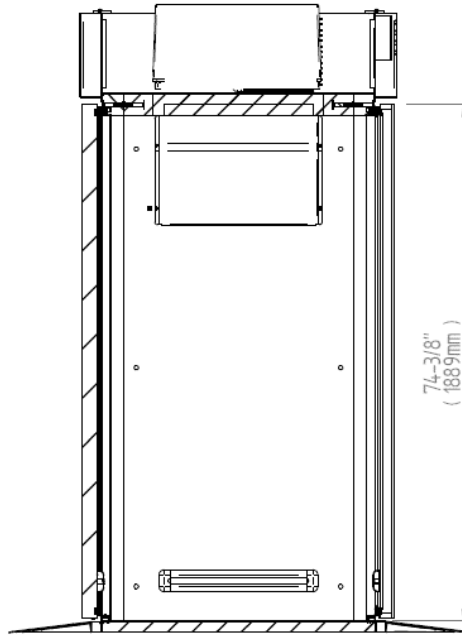
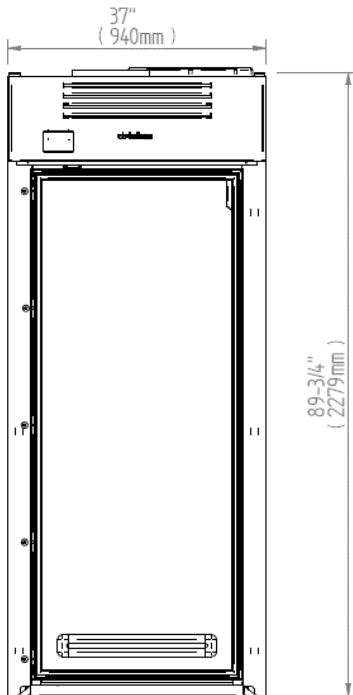
ELEVATION

RIGHT VIEW

PLANT VIEW



IRR-AGB96RI_BT



IRR-AGB45RT

ETL LISTED TO UL471 STANDARD AND SANITATION CLASSIFIED TO NSF7 - WE RESERVE THE RIGHT TO CHANGE SPECIFICATIONS WITHOUT NOTICE
 Review:01 Date: 11/17/2023 IRR-AGB_RI_RT_BT