

MODEL: IUC-MR41_67_93_EN

**DEEP UNDERCOUNTER:
 Undercounter Refrigerators.**



GENERAL FEATURES

- ✓ **Higher energy efficiency.** R290 refrigerant with electric fans and evaporative tray without electric resistances.
- ✓ **Sanitation.** The interior cabinet is built with rounded corners (extensive radius for easy cleaning). Quick ability to take off shelves and slides for interior cleaning. Each cabinet has a drain at the bottom of the unit. When cleaning the unit make sure the drain hose is routed to a floor drain.
- ✓ **Doors.** Self-closing door system with permanent pressure. Stay open feature included when door remain open after 95 degrees. All doors include triple chamber door gaskets, easy to remove and shap in.
- ✓ **Control System.** Greater ability for the adjustment of temperature range as per the end user's requirements.
- ✓ **100% Tested.** All condensing units undergo rigorous testing in helium chambers for refrigerant leak detection and a final equipment test in a state-of-the-art test room.
- ✓ **Certified.** Audited and Certified by INTERTEK for compliance with UL 471 and NSF 7.



MODEL: IUC-MR41_67_93_EN

**DEEP UNDERCOUNTER:
 Undercounter Refrigerators.**

STANDARD FEATURES

➤ **Exterior**

- AISI 304 Stainless Steel Top.
- AISI 430 Stainless Steel.

- ✓ Single Overshelf.
- ✓ Double Overshelf.

➤ **Interior**

- AISI 304 Stainless Steel.
- Internal drain plugs for easy cleaning.
- Sealed interior floors and rounded cabinet corners.

➤ **Shelving**

- (2) Plastic coated wire shelves per section.
- Set of Stainless- Steel shelf brackets.
- Easy remove for cleaning.
- Dimensions WxD: 20-7/8" x 25-5/8" (GN2/1) (530x650 mm).
- Compatible with 18"x26" (457x660 mm) sheet pans.

➤ **Door**

- Polyurethane insulated door.
- Self-closing door with stay open feature.
- Stainless Steel heavy-duty hinges.
- Triple chamber snap in door gaskets for easy removal and cleaning.
- Field reversible door.
- Door locks.
- Full-height door opening: 22-7/8" x 20-5/8" (580x523 mm).

➤ **Refrigeration**

- Digital temperature controller with automatic defrost system.
- Energy-saving non-electric condensate pan.
- Forced air refrigeration system.
- Extractable condensing unit for easy service.
- Extractable coil coated with anti-corrosion material 100% polyester.
- **Refrigeration capacity:**
 IUC-MR41EN - 1510 Btu/h(14°F)/ 443 W(-10°C).
 IUC-MR67EN - 2126 Btu/h(14°F)/ 623 W(-10°C).
 IUC-MR93EN -2245 Btu/h (14°F) / 658 W(-10°C).

➤ **Insulation**

- CFC- Free polyurethane insulation, entire cabinet structure is foamed-in using a high-density polyurethane insulation.
- Low GWP & Zero ODP effect.

➤ **Salad Top**

- Stainless Steel insulated lid.
- Top includes 1/3 size polycarbonate food pans (5 pans).
- Pan divider bars included.
- Removable sanitary polyethylene cutting board included.

➤ **Electrical**

- Cord and NEMA 5-P plug,
- Electrical connection is 115V / 1ph / 60 Hz.
- 15 AMP breakers required.



OPTIONAL FEATURES

- ✓ Set of 6" legs, height adjustable from 5" to 8".
- ✓ Electrical connection is 230 V / 1 ph / 50 Hz (Plug type and consumption varies).
- ✓ Stainless Steel wire shelves.
- ✓ Additional slide kits.

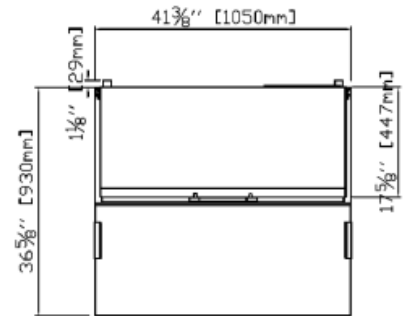
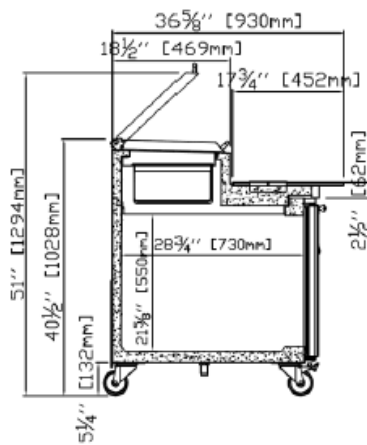
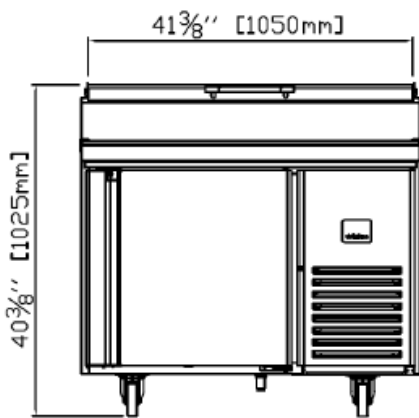
➤ **ETL Listed to UL471 Standard and Sanitation classified to N**

Review:01 Date: 11/16/2023 IUC-MR
 ETL LISTED TO UL471 STANDARD AND SANITATION CLASSIFIED TO NSF7 – WE RESERVE THE RIGHT TO CHANGE SPECIFICATIONS WITHOUT PRIOR NOTICE



MODEL: IUC-MR41_67_93_EN
**DEEP UNDERCOUNTER:
Pizza Prep Tables**

| | Dimensions (inches) (mm) | | | Doors | Lids | Ref. | Ref.Weight (Lbs.) (gr.) | Temperature Range (°F) (°C) | Cond. Unit (H.P) | Capacity (Cu.Ft.) (L) | Case Amps 115V | Net weight (Lbs.) (Kg.) |
|------------|-----------------------------|-----------------|------------------|-------|------|------|----------------------------|--------------------------------|------------------------|--------------------------|----------------------|----------------------------|
| | W | D | H | | | | | | | | | |
| IUC-MR41EN | 41-3/8 (1050) | 32-5/8 (830) | 40-1/4 (1022) | 1 | 1 | R290 | 0,22 (100) | 35°F / 41°F (+2°C / +5°C) | 1/4 | 7.8 (220) | 3,53 | 370 (168) |
| IUC-MR67EN | 67-3/8 (1710) | 32-5/8 (830) | 40-1/4 (1022) | 2 | 2 | R290 | 0,24 (110) | 35°F / 41°F (+2°C / +5°C) | 1/3 | 17 (480) | 4,6 | 580 (263) |
| IUC-MR93EN | 93-1/4 (2370) | 32-5/8 (830) | 40-3/8 (1025) | 3 | 2 | R290 | 0,26 (120) | 35°F / 41°F (+2°C / +5°C) | 3/4 | 27 (765) | 7,7 | 690 (313) |

PLAN VIEW
ELEVATION
RIGHT VIEW
PLANT VIEW

IUC-MR41EN

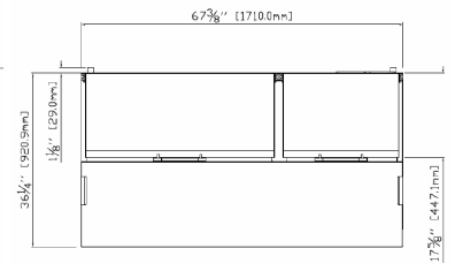
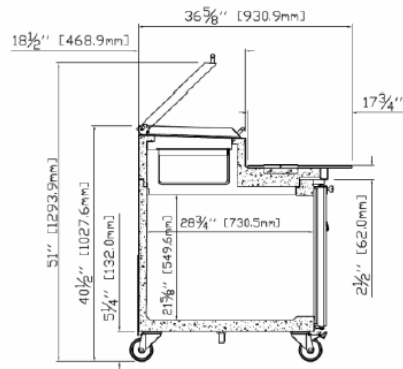
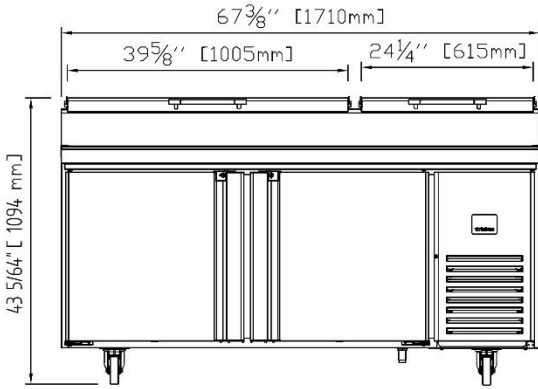
MODEL: IUC-MR41_67_93_EN

**DEEP UNDERCOUNTER:
 Pizza Prep Tables**

ELEVATION

RIGHT VIEW

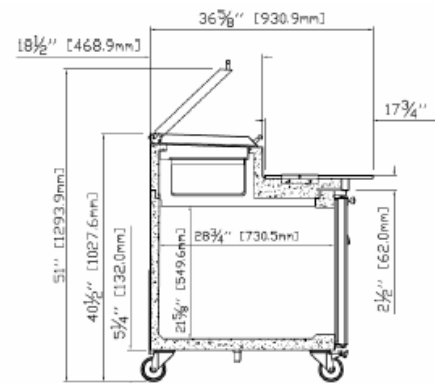
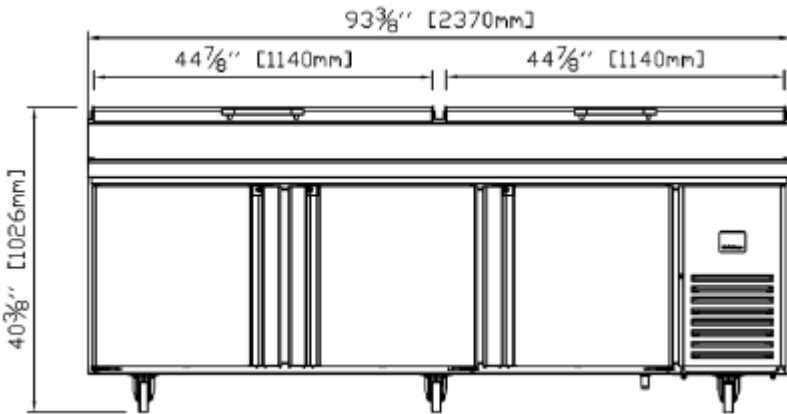
PLANT VIEW



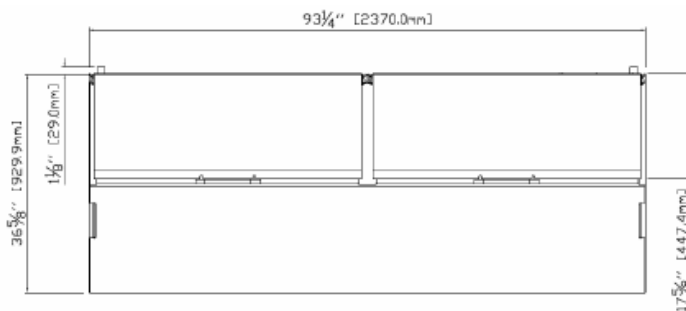
IUC-MR67EN

ELEVATION

RIGHT VIEW



PLANT VIEW



IUC-MR93EN