

MODEL: IUC-MSG36 / IUC-MSG48
IUC-MSG52 / IUC-MSG52-60/ IUC-MR72
IUC-MSG96 / IUC-MSG110

CHEF BASES



GENERAL FEATURES

- ✓ **Higher energy efficiency.** R290 refrigerant with electric fans and evaporative tray without electric resistances.
- ✓ **Sanitation.** The interior cabinet is built with rounded corners (extensive radius for easy cleaning). Quick ability to take off shelves and slides for interior cleaning. Each cabinet has a drain at the bottom of the unit. When cleaning the unit make sure the drain hose is routed to a floor drain.
- ✓ **Doors.** Self-closing door system with permanent pressure. Stay open feature included when door remain open after 95 degrees. All doors include triple chamber door gaskets, easy to remove and shap in.
- ✓ **Control System.** Greater ability for the adjustment of temperature range as per the end user's requirements.
- ✓ **100% Tested.** All condensing units undergo rigorous testing in helium chambers for refrigerant leak detection and a final equipment test in a state-of-the-art test room.
- ✓ **Certified.** Audited and Certified by INTERTEK for compliance with UL 471 and NSF 7.



MODEL: IUC-MSG36 / IUC-MSG48
IUC-MSG52 / IUC-MSG52-60/ IUC-MR72
IUC-MSG96 / IUC-MSG110

CHEF BASES

STANDARD FEATURES

➤ **Exterior**

- AISI 304 Stainless Steel Top.
- Front and sides in AISI 430 Stainless Steel.

➤ **Interior**

- AISI 304 Stainless Steel.
- Sealed interior floors.

➤ **Drawers**

- Each drawer accommodates one full 12"x20" pans and three of 1/6 pans (pans not included).
- Drawers with full-extension sliding rails for complete opening.
- Drawers with integrated handle.
- Heavy-duty stainless-steel drawer slides designed to hold up to 440 Lbs (200 Kg).

➤ **Insulation**

- CFC- Free polyurethane insulation, entire cabinet structure is foamed-in using a high-density polyurethane insulation.
- Low GWP & Zero ODP effect.

➤ **Casters**

- 4" Diameter casters already installed.
- Locks provided on front set.

OPTIONAL FEATURES

- ✓ Set of 6" legs, height adjustable from 5" to 8".
- ✓ Electrical connection is 230 V / 1 ph / 50 Hz (Plug type and consumption varies).

➤ **Pans**

- IUC- MSG36: 2- 12x20 / 6-1/6 pans.
- IUC-MSG48: 4 pans.
- IUC-MSG52: 6 pans.
- IUC-MSG72: 8 pans.
- IUC-MSG96: 12 pans.
- IUC-MSG110: 12 pans (12X20").

➤ **Refrigeration**

- Protected digital temperature controller with automatic defrost system.
- Energy-saving non-electric condensate pan.
- Forced air refrigeration system.
- Extractable coil coated with anti-corrosion material 100% polyester.
- **Refrigeration capacity:**
 IUC- MSG36 - 1512 Btu/h(14°F)/ 443 W(-10°C).
 IUC-MSG48 - 1512 Btu/h(14°F)/ 443 W(-10°C).
 IUC-MSG52 –1512 Btu/h (-22°F) / 443 W(-10°C).
 IUC-MSG52-60 – 1512 Btu/h (-22°F) / 443 W(-10°C).
 IUC-MSG72–1512 Btu/h (-22°F) / 443 W(-10°C).
 IUC-MSG96–2120 Btu/h (-22°F) / 621 W(-10°C).
 IUC-MSG110–2120 Btu/h (-22°F) / 621 W(-10°C).

➤ **Electrical**

- Cord and NEMA 5-P plug,
- Electrical connection is 115V / 1ph / 60 Hz.
- 15 AMP breakers required.



➤ **ETL Listed to UL471 Standard and Sanitation classified to NSF7.**

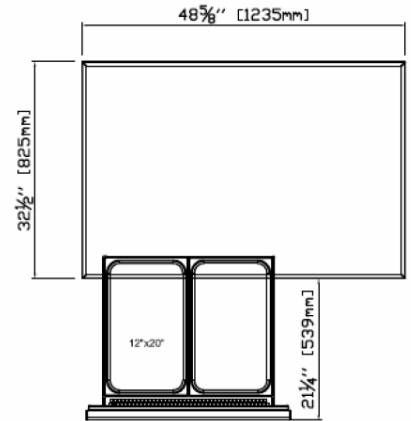
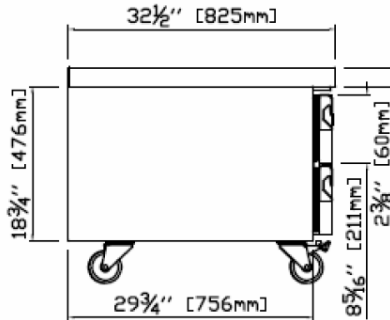
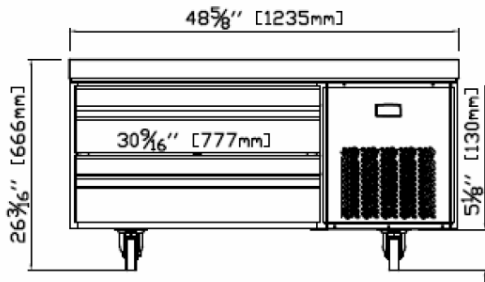
MODEL: IUC-MSG36 / IUC-MSG48
 IUC-MSG52 / IUC-MSG52-60/ IUC-MR72 IUC-MSG96 / IUC-MSG110

CHEF BASES

ELEVATION

PLANT VIEW

RIGHT VIEW

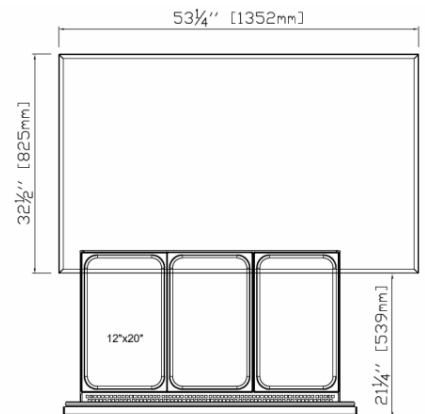
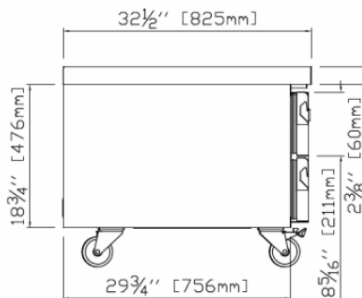
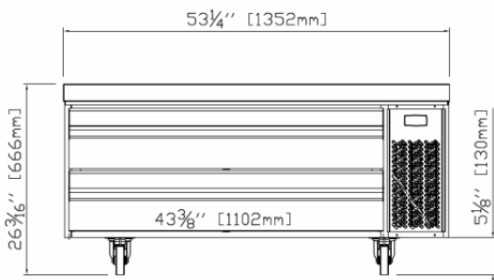


IUC-MSG48

ELEVATION

PLANT VIEW

RIGHT VIEW

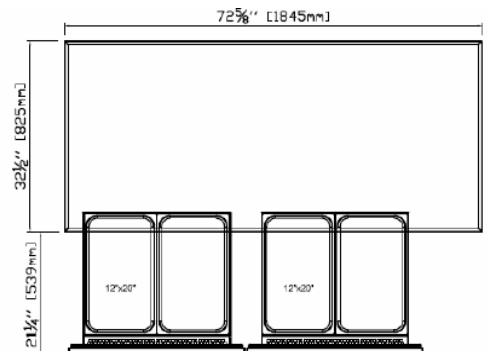
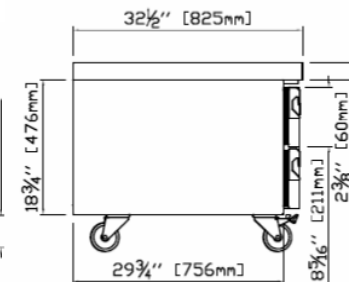
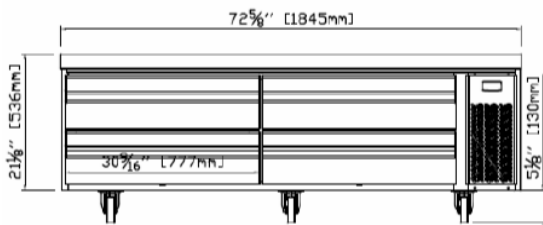


IUC-MSG52

ELEVATION

PLANT VIEW

RIGHT VIEW



IUC-MSG72

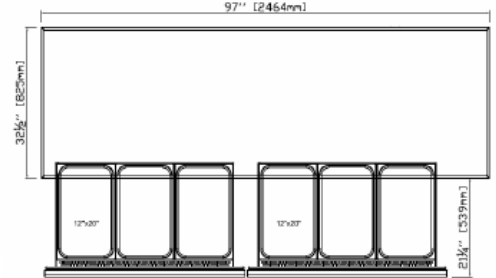
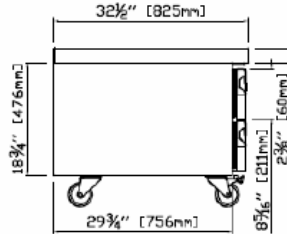
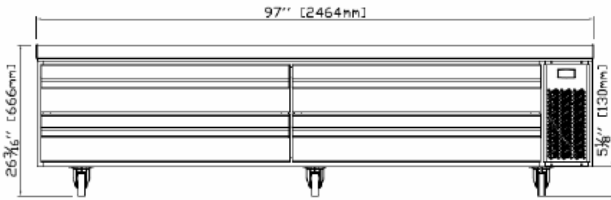
MODEL: IUC-MSG36 / IUC-MSG48
 IUC-MSG52 / IUC-MSG52-60/ IUC-MR72 IUC-MSG96 / IUC-MSG110

CHEF BASES

ELEVATION

PLANT VIEW

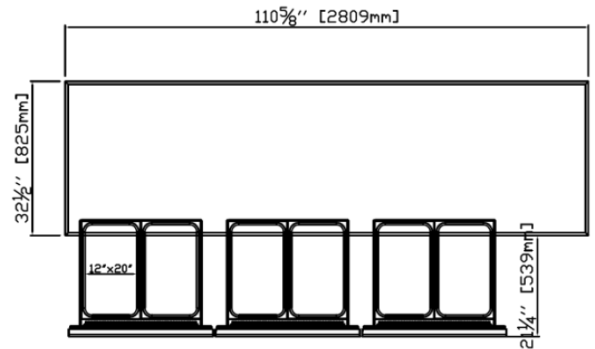
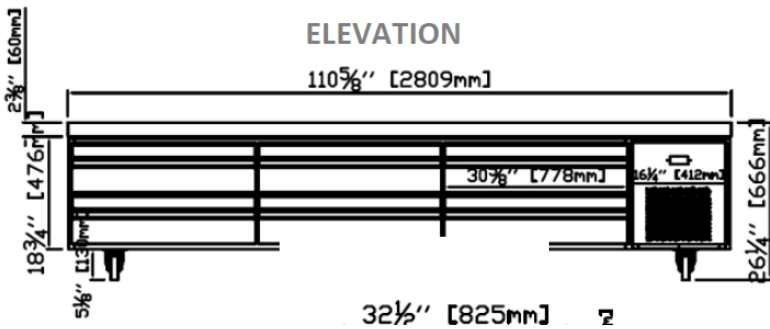
RIGHT VIEW



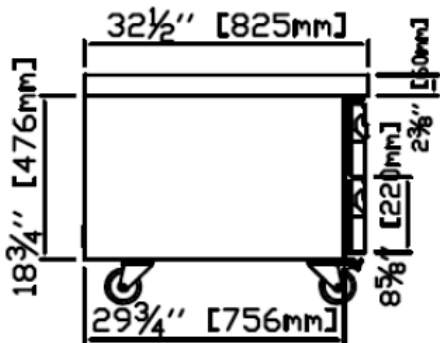
IUC-MSG96

ELEVATION

PLANT VIEW



RIGHT VIEW



IRT-MSG110