

Glass Frosters / Chillers

FGF Series **New!**



FGF-24 FGF-36 FGF-50
 FGF-24S FGF-36S FGF-50S

Item # _____

Standard Features

- Our slide top units are designed with durability and strength along with feature rich standards uncommon in the industry today.
- **Exclusive 4 heavy duty shelving system** with slides in order to take full advantages of your capacity without sacrificing any space.
- Shelving slides from one side to the other on both top and middle shelves for a maximum usage.
- Digitally controlled refrigeration system for a wide range of temperatures throughout the box to ensure a frosted or chilled product at all times.
- Heavy duty 18 gauge stainless steel top with stylish wear resistant black vinyl front, sides and back. (S) Models have a stainless steel front and sides Galvanized back.
- Units come with compressor mounted on the right side with service friendly slide out rail system. Drain is located in the back compressor house.
- Shelving slides from one side to the other on both top and middle shelves for a maximum usage.



FGF-24S



FGF-36



FGF-50



*Conforms to UL & NSF-7 standards

Options & Accessories

- 220 volts / 50 cycles / 1 phase

Glass Frosters	Model	Doors	Capacity		Amp	HP	Voltage	NEMA Plug	Cord Length	Cabinet Dimensions			Shipping	
			8" Mugs	10 oz. Steins						W	D**	H	Wt.	Cubes
	FGF-24(S)	1	35	96	6.5	1/2	115	5-15P	8"	24-5/8"	27"	35-3/4"	176	13
	FGF-36(S)	1	60	162	8.0	3/4	115	5-15P	8"	36-5/8"	27"	35-3/4"	234	19.7
	FGF-50(S)	2	84	234	8.0	3/4	115	5-15P	8"	49-5/8"	27"	35-3/4"	269	27.5

*(S) Stainless steel units
 ** Depth does not include 1" bumper.

Specifications

Construction

Heavy duty stainless steel top, 18 gauge. Black vinyl front, sides and back. (S) Models have stainless steel front, sides and back. Interior constructed of heavy duty galvanized steel walls with coved corner galvanized floor.

Lids are heavy duty foamed in place with stainless steel finish. Entire cabinet is insulated with 2" foam-in-place Ecomate insulation. Polyurethane insulation with zero ozone depletion (ODP) and zero global warming (GWP).

Refrigeration System

Self-contained capillary tube system using

environmentally friendly (CFC Free) R-404a refrigerant. Front breathing compressor on right side for built-in applications. Evaporator coil is mounted to interior back panel. Large fan motor and fan blades for greater air flow. Automatic condensate evaporator, drain connection required.

Evaporator condensate has been plumbed to a condensate pan located in the compressor housing. Access for the condensing unit behind the front grill, slides out for easy cleaning and maintenance. Cabinets are designed to maintain temperatures between 0° F to -7° F in the interior cabinet.

Shelving

Shelving: (2) Sliding shelves with glass guards, (2) sliding shelves without guards, (2) flat floor shelves.

Others

Unit is supplied standard with an 8' cord and plug (Nema 5-15p).

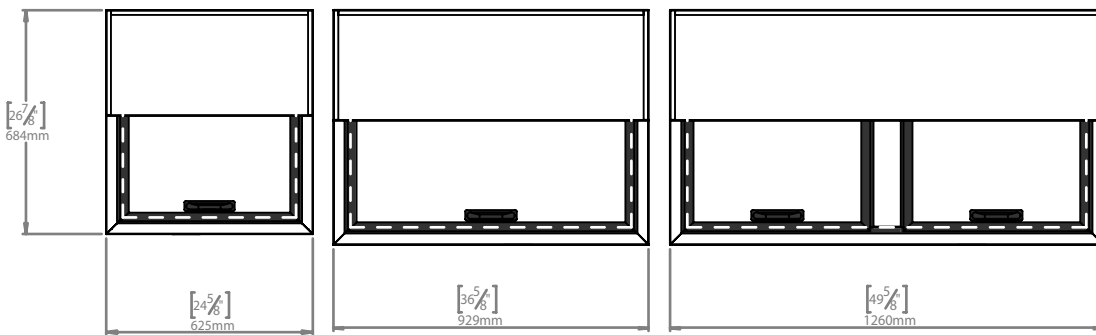
Warranty

3 year parts and labor warranty plus 2 additional year compressor warranty. (Continental U.S.A. & Canada only).

FGF-24(S)
Top View

FGF-36(S)
Top View

FGF-50(S)
Top View

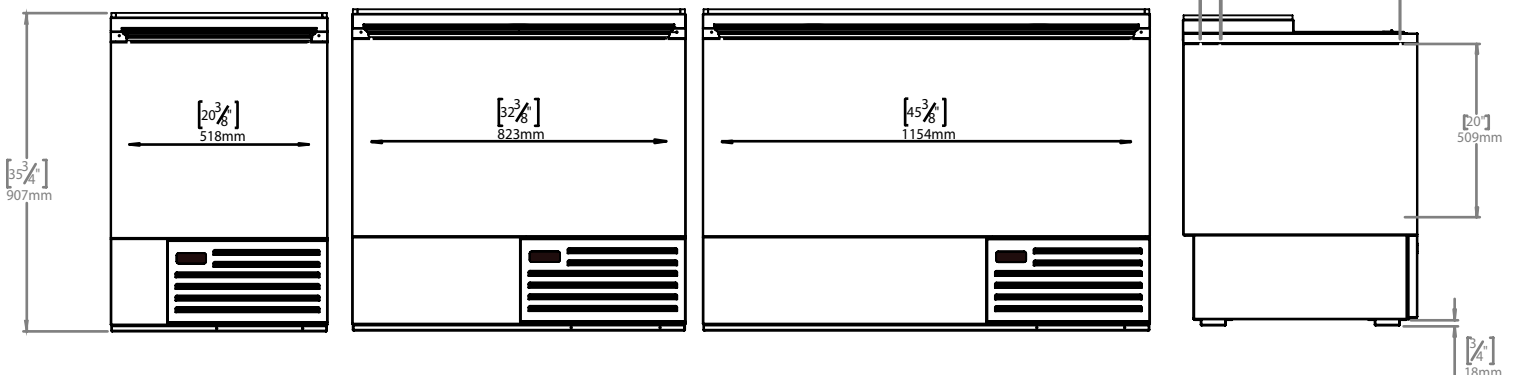


Front View

Front View

Front View

Side View



The manufacturer reserves the rights to modify materials and specifications without notice.