

MODEL: **IMD-EVV100**
IMD-EVV200MX

Wine Coolers Single & Dual Temperature



GENERAL FEATURES

Elevate your wine experience with our meticulously designer refrigerators. Precise temperature control for red, white, rosé, and brut wines. Protect your collection with UV-resistant glass or solid doors.

- ✓ **Doors.** Self-closing door system features a permanent pressure mechanism, ensuring a secure closure every time. Additionally, a convenient 'stay open' feature engages when the door remains open at 95 degrees or beyond. Our doors also include triple chamber door gaskets that are easy to remove and snap in, ensuring an effective seal.
- ✓ **Control System.** Our temperature management system offers unparalleled precision, allowing for highly accurate temperature settings. With greater flexibility in adjusting temperature ranges, our system can be tailored to meet the unique needs of each end user. This ensures optimal performance and maximum satisfaction with every use.
- ✓ **Lighting.** LED lighting in the canopy and cabinet sides reduces the energy consumption by 80% to 90% compared to a traditional bulb, better light quality.
- ✓ **100% Tested.** All condenser units are 100% tested, in helium chambers for refrigerant leak detections.
- ✓ **Certified.** Audited and Certified by INTERTEK for compliance with UL 471 and NSF 7.



**MODEL: IMD-EVV100
 IMD-EVV200MX**

Wine Coolers Single & Dual Temperature

STANDARD FEATURES

➤ **Exterior**

-100% Pine wood exterior (Top, Front, Sides).

➤ **Interior**

-Pre-painted galvanized steel interior,

-LED lighting.

➤ **Door**

-Built-in double pane glass inside pine wood frame,

-Triple chamber snap in door gaskets for easy removal and cleaning,

-Door lock.

➤ **Insulation**

-CFC- Free polyurethane insulation, entire cabinet structure is foamed-in using a high-density polyurethane insulation.

-Low GWP & Zero ODP effect.

➤ **Shelving**

- (7) seven pre-painted steel shelves with front wood stopper per door.

➤ **Refrigeration**

- Digital temperature controller with automatic defrost system,

- Evaporative pan,

- Evaporator coil coated with anti-corrosion material 100% Polyester.

- Forced air refrigeration system,

Refrigeration capacity:

IMD-EVV100 – 908 Btu/h(14°F)/266 W(-10°C).

IMD-EVV200MX – 1908 Btu/h(14°F)/266 W(-10°C) (Per Door).

➤ **Temperature**

- A single or double temperature (from 39°F (4°C) to 64°F (18°C)) and appropriate humidity (50% to 70%),

- Recommended temperature, Red Wine between 50°F (10°C) to 64°F (18°C) / White, Rosé and brut between 39°F (4°C) to 46°F (8°C).

➤ **Electrical**

- Cord and NEMA 5-15P plug.

- Electrical connection is 115V / 1ph / 60 Hz.

- 15 AMP breakers required.



➤ **ETL Listed to UL471 Standard and Sanitation classified to NSF7.**

OPTIONAL FEATURES

✓ Decoration: cherry (standard), black and white (optional).

✓ Additional shelves.

✓ Electrical connection is 230 V / 1 ph / 50 Hz (Plug type varies).

MODEL: IMD-EVV100
IMD-EVV200MX **Wine Coolers Single & Dual Temperature**

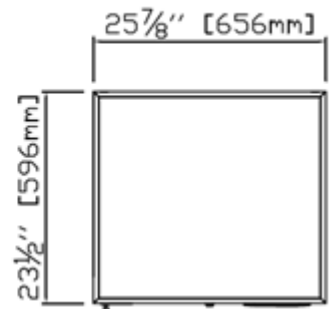
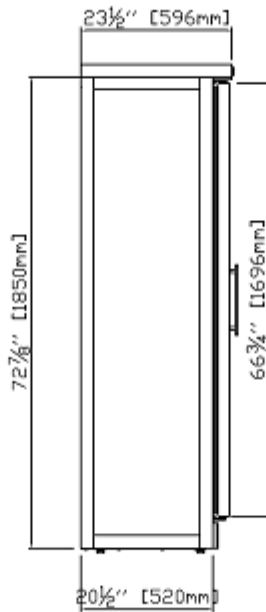
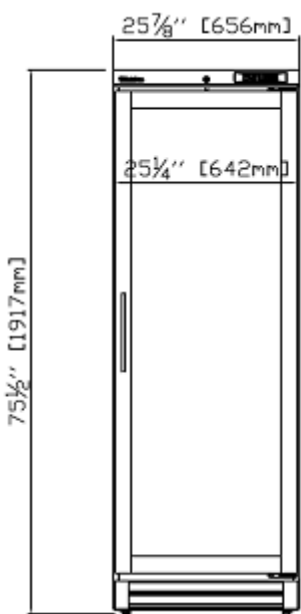
MODELS	Dimensions (inches) (mm)			Doors	Shelves	Ref.	Ref.Weight (Lbs.) (gr.)	Temperature Range (°F) (°C)	Cond. Unit (H.P)	Capacity (Cu.Ft.) (L)	Case Amps 115V	Net weight (Lbs.) (Kg.)
	W	D	H									
IMD-EVV100	25-7/8 (656)	23-1/2 (596)	75-1/2 (1.918)	1	7	R290	0,25 (115)	39 °F/64 °F (+4°C/+18°C)	1/4	12,36 (350)	4,01	360 (163)
IMD-EVV200MX	51-3/4 (1.314)	23-1/2 (596)	75-1/2 (1.918)	2	7+7	R290	0,25 (115)	39 °F/64 °F (+4°C/+18°C)	1/4+1/4	12,36 + 12,36 (350 + 350)	7,56	630 (286)
							0,25 (115)					

PLAN VIEW

ELEVATION

RIGHT VIEW

PLANT VIEW



IMD-EVV100

Revision:02 Date: 05/26/2023 IMD-EVV100_200MX

ETL LISTED TO UL471 STANDARD AND SANITATION CLASSIFIED TO NSF7 – WE RESERVE THE RIGHT TO CHANGE SPECIFICATIONS WITHOUT PRIOR NOTICE



INFRICO-North America Corporate División
 1409NW 84th Avenue, Doral FL 33126
 (305) 777 9599 ext.700 / f (305) 777 9598
 Toll Free 855-340-4637

www.infrico.us
sales@infrico.com

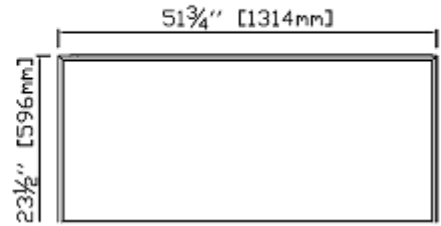
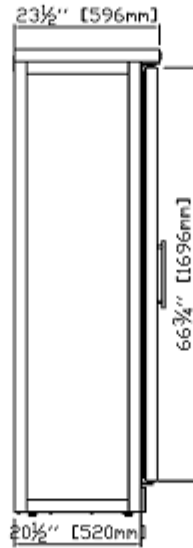
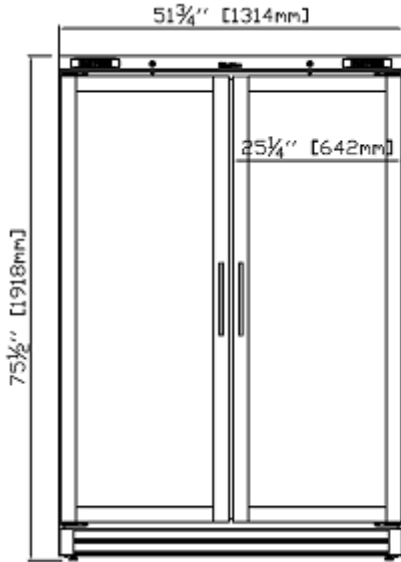
MODEL: **IMD-EVV100**
IMD-EVV200MX

Wine Coolers Single & Dual Temperature

ELEVATION

RIGHT VIEW

PLANT VIEW



IMD-EVV200MX

Revision:02 Date: 05/26/2023 IMD-EVV100_200MX

ETL LISTED TO UL471 STANDARD AND SANITATION CLASSIFIED TO NSF7 – WE RESERVE THE RIGHT TO CHANGE SPECIFICATIONS WITHOUT PRIOR NOTICE



INFRICO-North America Corporate División
 1409NW 84th Avenue, Doral FL 33126
 (305) 777 9599 ext.700 / f (305) 777 9598
 Toll Free 855-340-4637

www.infrico.us
sales@infrico.com