

**MODEL: IDC-VLY9**
**PASTRY DISPLAY CASES – Lyon Serie.**

### General Strengths

- ✓ **Modular Line.** Designed for pastry, Viennese and baker. Angles and counter to adapt the line to a determinate space.
- ✓ **Control systems.** Higher precision in managing temperature settings. The ability to adjust temperature ranges to meet end user's requirements.
- ✓ **100% Tested.** All condenser units are 100% tested in helium chambers in order to detect refrigeration leaks.
- ✓ **Certified.** AENOR audited and certified by internationally recognized firm. ISO 9001:2008 (Quality); ISO 14001:2004 (Environmental); OSHAS 18001:2007 (Prevention and Worker Safety)
- ✓ **Lighting.** Interior cabinet includes LED lighting, for brighter lighting and energy efficiency. LED saves 90% more energy compared to traditional fluorescent bulbs. Considerably increases product visibility.



Revision: 01 Date: 09/12/2017 IDC-VLY9\_FT\_62\_1

MODEL	Dimensions (inches) (mm)			Sides	Shelving (11-3/16X15-3/4) / (23-5/8X15-3/4) (300X400) / (600X400)	Ref.	Refrig. Amount (Lbs.) (gr.)	Temp. Range (°F) (°C)	Capacity (Cu. Ft.) (L)	Cond. Unit. H.P.	Case Amps	Crated Weight (Lbs.) (Kg.)
	W	D	H									
IDC-VLY9	36-15/16 938	35-7/16 900	51-3/8 1305	1-1/16+1-3/16 30+30	4 / 2	R134a	0.77 350	39°F / 46°F +4°C/+8°C	2.54 72	1/4	6.1	430 195

ETL LISTED TO UL471 STANDARD AND SANITATION CLASSIFIED TO NSF7 – WE RESERVE THE RIGHT TO CHANGE SPECIFICATIONS WITHOUT PRIOR NOTICE



**Infrico USA Corp.**  
 1409 N.W. 84th Avenue  
 Doral, FL 33126  
 1.305.777.9599 Office  
 1.305.777.9598 Fax

[www.infrico.us](http://www.infrico.us)  
 service@infrico.com

APPROVALS: \_\_\_\_\_ AVAILABLE AT: \_\_\_\_\_

**MODEL: IDC-VLY9**
**PASTRY DISPLAY CASES – Lyon Serie.**
**STANDARD FEATURES**
**➤ Exterior**

- AISI 304 18/10 stainless steel lower part decoration,
- White compact quartz worktop,
- Flat tempered security glass system,
- Water resistant frontal and decoration DM lacqued,
- LED lighting frontal decoration,

**➤ Interior**

- AISI 304 18/10 exhibition area,
- Upper profile LED lighting,

**➤ Insulation**

- CFC-Free polyurethane insulation, entire cabinet structure is foamed-in place using a high-density polyurethane insulation,
- Low GWP & Zero ODP effect.

**➤ Range of colours (lacqued decoration)**

- Violet RAL 4007 | Maroon RAL 3003 | Red RAL 3020 | Orange RAL 2003 | Yellow RAL 1018 | Beige RAL 1001 | Blue RAL 5015 | Blue Ciel RAL DESING 2108025 | Green Dark RAL 6002 | Pink RAL DESING 3504035 | Pistachio RAL DESING 1107060 | White RAL 9016 | Black RAL 9017.

**➤ Refrigeration**

- Digital temperature controller with automatic defrost system,
- Forced air refrigeration systems,
- Control of the final defrost temperature,
- Automatic evaporative tray,
- Case engineered to operate at 75°F (24°C) and 55% relative humidity.

**OPTIONAL FEATURES**

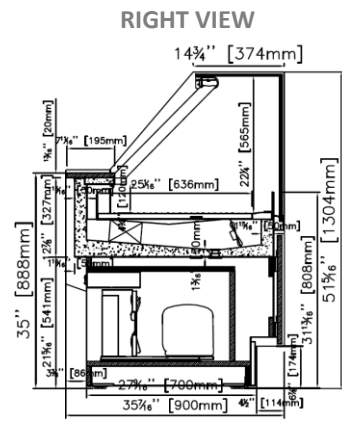
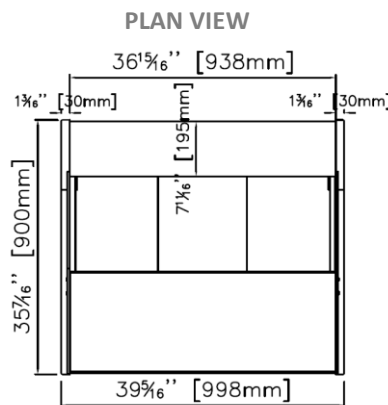
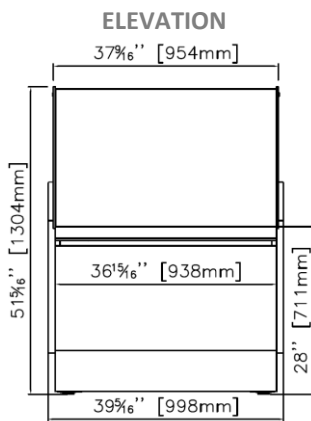
- ✓ LED lighting shelf,
- ✓ Anodized aluminum profile shelves,
- ✓ Rear sliding doors,
- ✓ Electrical connection is 220-230 V / 1ph / 50 Hz (plug type varies).

**➤ Electrical**

- Cord and NEMA 5-15P plug,
- Electrical connection is 115V / 1ph / 60 Hz.
- 20 AMP breakers required,


**➤ ETL Listed to UL471 Standard and Sanitation classified to NSF7.**

Revision: 01 Date: 09/12/2017 IDC-VLY9\_FT\_62\_1

**PLAN VIEW**


ETL LISTED TO UL471 STANDARD AND SANITATION CLASSIFIED TO NSF7 – WE RESERVE THE RIGHT TO CHANGE SPECIFICATIONS WITHOUT PRIOR NOTICE