

**MODEL: IDC-VCO12**
**PASTRY DISPLAY CASES – Combo Series**

### General Strengths

- ✓ **Control systems.** Higher precision in managing temperature settings. The ability to adjust temperature ranges to meet end user's requirements.
- ✓ **100% Tested.** All condenser units are 100% tested in helium chambers in order to detect refrigeration leaks.
- ✓ **Certified.** Audited and Certified by INTERTEK for compliance with UL 471 and NSF 7. AENOR audited and certified by internationally recognized firm. ISO 9001:2015 (Quality); ISO 14001:2015 (Environmental); OSHAS 18001:2007 (Prevention and Worker Safety)
- ✓ **Lighting.** Interior cabinet includes LED lighting, for brighter lighting and energy efficiency. LED saves 90% more energy compared to traditional fluorescent bulbs. Considerably increases product visibility.



Revision: 01 Date: 03/05/2019 IDC-VCO12\_FT\_62\_1

MODEL	Dimensions (inches) (mm)			Sides	Shelving	Ref.	Refrig. Amount (Lbs.) (gr.)	Temp. Range (°F) (°C)	Capacity (Cu. Ft.) (L)	Cond. Unit. H.P.	Case Amps	Crated Weight (Lbs.) (Kg.)
	W	D	H									
IDC-VCO12	49-3/16 1250	35 810	57-1/4 1455	1-3/16+1-3/16 30+30	1	R404A	0.88 400	35°F / 41°F +2°C/+5°C	9.46 268	3/4	8.1	600 272

ETL LISTED TO UL471 STANDARD AND SANITATION CLASSIFIED TO NSF7 – WE RESERVE THE RIGHT TO CHANGE SPECIFICATIONS WITHOUT PRIOR NOTICE



**Infrico USA Corp.**  
 1409 N.W. 84th Avenue  
 Doral, FL 33126  
 1.305.777.9599 Office  
 1.305.777.9598 Fax

[www.infrico.us](http://www.infrico.us)  
 service@infrico.com

APPROVALS: \_\_\_\_\_ AVAILABLE AT: \_\_\_\_\_

**MODEL: IDC-VCO12**
**PASTRY DISPLAY CASES – Combo Series**
**STANDARD FEATURES**
**Exterior**

- Laminated steel plate,
- Exhibition area in EPOXI,
- Decoration DM lacqued,
- Hinged front tempered glass,
- Rear sliding doors,
- Double lateral glass sides,
- Dry countertop,
- Night curtain,

**Interior**

- Enamelled steel base,
- LED lighting in the front,
- LED lighting in canopy and under each shelf,

**Insulation**

- CFC-Free polyurethane insulation, entire cabinet structure is foamed-in place using a high-density polyurethane insulation,
- Low GWP & Zero ODP effect.

**Refrigeration**

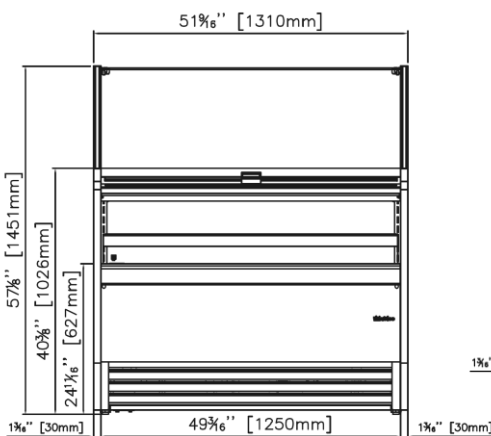
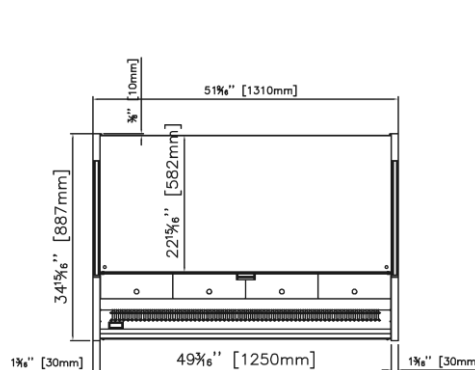
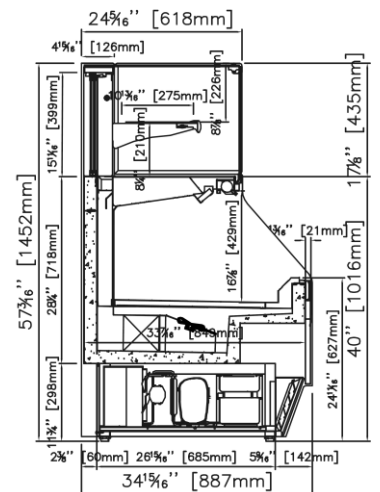
- Digital temperature controller with automatic defrost system,
- Rear electronic thermostat,
- Forced air refrigeration system,
- Stainless Steel Evaporative double trays, first, by hot gas, second by electrical resistance.
- Refrigerant gas R404A,
- Case engineered to operate at 75°F and 55% relative humidity.

**Electrical**

- Cord and NEMA 5-20P plug,
- Electrical connection is 115V / 1ph / 60 Hz.


**ETL Listed to UL471 Standard and Sanitation classified to NSF7.**
**OPTIONAL FEATURES**

- ✓ Customizable decoration for the front and sides,
- ✓ White color,
- ✓ Electrical connection is 220-230 V / 1ph / 50 Hz (plug type varies).

**PLAN VIEW**
**ELEVATION**

**PLAN VIEW**

**RIGHT VIEW**


ETL LISTED TO UL471 STANDARD AND SANITATION CLASSIFIED TO NSF7 – WE RESERVE THE RIGHT TO CHANGE SPECIFICATIONS WITHOUT PRIOR NOTICE