



Features:

- Left Hinge
- Capacity: approx. 117 beverage cans
- Application: Front exhaust for built-in or freestanding installations
- Temperature Range: 34°- 64°F
- Ambient Temperature Range: 41° - 100°F /
- Humidity 45~90%
- Control: Digital Temperature Control
- Patented interior Backlit™ (baklit) panel: Heliotrope, Amber, and Vinotemp BioBlu™ baklit (U.S. Patent No. D868849)
- 3 flat glass shelves
- Shelves can be adjusted to accommodate more or less beverages
- Indoor/Outdoor: Indoor only
- Security Lock: Yes
- Rated Voltage: AC 115V
- Frequency: 60 Hz
- Dimensions: 23-1/2"W X 23-1/2"D X 34-3/8"H

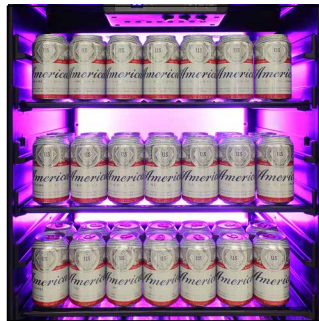
EL-54BCCOMM-L

Private Reserve Series 117-Can Backlit Panel Commercial 54 Beverage Cooler

Vinotemp's Private Reserve Series 117 Can Backlit Panel Commercial Beverage Cooler has innovative features such as glass shelves, interior Backlit™ in three different colors, and easy to use temperature settings. This beverage cooler is front venting with easy installation to build in and fit perfectly in any kitchen or bar area. The design forward beverage cooler features vibration-damping design to better protect its contents and is engineered for low energy consumption and low noise. Its patented interior Backlit™ panel has three different options - Heliotrope, Amber, and Vinotemp BioBlu™ (which helps reduce the growth of bacteria and mold) - and can be selected at any given time. Adjustable temperature range allows users to select a proper, customized storage and serving temperature for any beverages. Sturdy, flat glass shelves display beverage cans while the racks glide and extend forward, adding to the cooler's visual appeal and functionality. A digital LED temperature display makes temperatures easy-to-read and ensures beverages are being stored and served at the appropriate temperatures.



Control Panel



Plenty of Room for Cans



Medium Capacity

