



# Fronius Smart Meter.

Designed to monitor.

## First measure, then optimise: Fronius Smart Meter

- 01 Data with added value
- 02 Savings as standard
- 03 Ready for anything

Visualise, control and optimise energy flows: efficient energy management is only possible if the right data is available. And this is exactly what the Smart Meter – our bidirectional and intelligent electricity meter for photovoltaic systems – quickly, reliably and accurately provides.

**Fronius Smart Meter. Designed to monitor.**

# General product strengths

## 01 Data with added value

The basis for photovoltaic system optimisation: our bidirectional Smart Meters measure all energy flows that come from the grid or flow into the grid, allowing them to gather valuable information quickly, reliably and precisely. If used properly, the data has the real added value of saving photovoltaic system owners money.

## 02 Savings as standard

Save money and energy over the long term: this is made possible by our Smart Meters as essential accessories in combination with the inverter and our monitoring tool Fronius Solar.web. Energy flows can be visualised, controlled and therefore also optimised. This is how efficient energy management based on data works.

## 03 Ready for anything

Something for everyone: our variety of Smart Meter products covers the entire range of applications – whether for private households or commercial use.



## Fronius Smart Meter IP\*

The intelligent electricity meter with LAN and WLAN connection.

			Fronius Smart Meter	
			IP	
Technical data	Nominal voltage	V	100 - 240 (3 x 208 - 480)	
	Operating voltage range	%	-10 to +10	
	Nominal frequency	Hz	50 - 60	
	Maximum current	A	5000	
	grid type		1PN, 2PN, 3PN	
	Power line cross section	mm <sup>2</sup>	1.5 - 4	
	Neutral line cross section	mm <sup>2</sup>	1.5 - 4	
	CT's & Communication line cross section	mm <sup>2</sup>	0.25 - 2.5	
	Power consumption	W	2	
	Starting current	mA	20 (max. 30)	
	Accuracy class		1	
	Active energy accuracy		Class 1 (EN 62053-21) / Class B (EN 50470-3)	
	Reactive energy accuracy		Class 2 (EN 62053-23)	
	Short-time overcurrent		3 x I <sub>max</sub> / 20 s	
	Mounting		Indoors (DIN rail)	
	Housing		3 modules DIN 43880	
	Degree of protection		IP20 (front frame), IP30 (terminals)	
	Ambient temperature range	°C	-25 to +55	
	Dimensions (height x width x depth)	mm	90 x 53 x 58	
	Weight	g	132	
Interface to inverter		Modbus RTU (RS485), Modbus TCP (WiFi, LAN)		
Current transformers		Primary: 1 - 5000 A / secondary: use only CTs with voltage output 333 mV		

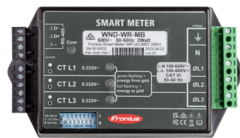
\* depending on country-specific availability and certification



## Fronius Smart Meter\*

The intelligent electricity meter for private and commercial use.

			Fronius Smart Meter		
			63A-3	50kA-3	63A-1
Technical data	Nominal voltage	V	230 - 400	400 - 415	230 - 240
	Operating voltage range	%	-15 to +15	-9 to +14	-10 to +10
	Nominal frequency	Hz	50 - 60	50 - 60	50 - 60
	Maximum current	A	3 x 63	3 x 50,000	1 x 63
	grid type		3PN	1PN, 3P, 3PN	1PN
	Power line cross section	mm <sup>2</sup>	1 - 16	0.05 - 4	1 - 16
	Neutral line cross section	mm <sup>2</sup>	1 - 16	0.05 - 4	1 - 16
	CT's & Communication line cross section	mm <sup>2</sup>	0.05 - 4	0.05 - 4	0.05 - 4
	Power consumption	W	1.5	2.5	1.5
	Starting current	mA		40	
	Accuracy class		1	1	1
	Active energy accuracy		Class B (EN50470)		
	Reactive energy accuracy		Class 2 (EN/IEC 62053-23)		
	Short-time overcurrent		30 x I <sub>max</sub> / 0.5 s	30 x I <sub>max</sub> / 0.5 s	30 x I <sub>max</sub> / 0.5 s
	Mounting		Indoors (DIN rail)		
	Housing		4 modules DIN 43880	4 modules DIN 43880	2 modules DIN 43880
	Degree of protection		IP 51 (front frame), IP 20 (terminals)		
	Ambient temperature range	°C	-25 to +55	-5 to +55	-25 to +55
	Dimensions (height x width x depth)	mm	89.0 x 71.2 x 65.6	89.0 x 71.2 x 65.6	89.0 x 35.0 x 65.6
Weight	g	260	260	250	
Interface to inverter		Modbus RTU (RS485)			
Display		8-digit LCD	8-digit LCD	6-digit LCD	
Current transformers			Primary: 1 - 50,000 A / secondary: use only CT with current output 5 A		



## Fronius Smart Meter WR\*

The intelligent electricity meter with current transformer control.

			Fronius Smart Meter
			WR 100-600 V-3
Technical data	Nominal voltage	V	120 - 600
	Operating voltage range	%	-15 to +15
	Nominal frequency	Hz	45 - 65
	Maximum current	A	3 x 6000
	grid type		1PN, 2P, 2PN, 3P, 3PN
	Power line cross section	mm <sup>2</sup>	up to 2.5
	Neutral line cross section	mm <sup>2</sup>	up to 2.5
	CT's & Communication line cross section	mm <sup>2</sup>	up to 2.5
	Power consumption	W	1.75
	Starting current	mA	40
	Accuracy class		0.5
	Active energy accuracy		ANSI C12.20 class 0.5 and ANSI C12.1 accuracy
	Mounting		Indoor: wall-mounted; Outdoor: if mounted inside an electrical enclosure that is rated NEMA 3R or 4 / IP 66
	Degree of protection		IP40
	Ambient temperature range	°C	-40 to +80
Dimensions (height x width x depth)	mm	153 x 85.1 x 38.0 (6.02 in x 3.35 in x 1.50 in)	
Weight	g	233	
Interface to inverter		Modbus RTU (RS485)	
Current transformers		Primary: 1 – 6000 A / secondary: use only CTs with voltage output 333 mV	

\* depending on country-specific availability and certification

# Current transformers for Fronius Smart Meters

## Flexible measurements

Optimisation of photovoltaics without risk: in large photovoltaic systems, high output current can no longer be recorded with Smart Meters that measure directly. The Fronius Smart Meter CT current transformer transforms the measured current into a signal that is reliably measured and converted. Installing the Fronius Smart Meter CT is especially convenient — thanks to the split-core technology, the current transformer can be placed around the conductor without having to disconnect the cable for installation.



			Fronius Smart Meter CT A				
			100A/5A	150A/5A	200A/5A	250A/5A	400A/5A
Technical data	Compatible Fronius Smart Meters		Fronius Smart Meter TS 5kA-3 Fronius Smart Meter 50kA-3				
	Accuracy		1 <sup>1</sup>				
	Type of installation		Split-core				
	Dimensions (height x width x depth)	mm	66.5 x 45 x 34.4			81.5 x 57 x 38.4	
	Diameter	mm	24			36	
	Cable length	m	1				
	Temperature range	°C	-40 to +65				
Apparent ohmic resistance	Class 1	VA	0.3	1	1	2.5	5

<sup>1</sup> Depending on the apparent ohmic resistance



			Fronius Smart Meter CT V		
			100A/333mV	250A/333mV	400A/333mV
Technical data	Compatible Fronius Smart Meters		Fronius Smart Meter WR 100-600 V-3 Fronius Smart Meter IP		
	Accuracy		1		
	Type of installation		Split-core		
	Dimensions (height x width x depth)	mm	46 x 31.5 x 31.5	66.5 x 45 x 34.4	81.5 x 57 x 38.4
	Diameter	mm	16	24	36
	Cable length	m	1		
	Temperature range	°C	-40 to +65		

**Fronius Australia Pty Ltd.**  
90-92 Lambeck Drive  
Tullamarine VIC 3043  
Australia  
pv-sales-australia@fronius.com  
www.fronius.com.au

**Fronius International GmbH**  
Froniusplatz 1  
4600 Wels  
Austria  
pv-sales@fronius.com  
www.fronius.com

EN\_UK\_V03 Jan 2024  
Text and images correspond to the current state of technology at the time of printing. Subject to modifications. All information is without guarantee in spite of careful editing – liability excluded. Information Class: Public. Copyright © 2024 Fronius™. All rights reserved.