



Project: _____
Items: _____
Quantity: _____
Approval: _____
Date: _____

U-Boat Picking & Stock Carts w/ Removable Shelves & Handles

This versatile U-Boat with two removable shelves and handles converts to meet the needs of your changing merchandise. Use for order picking or backroom storage for future front of the store pack out.

Features:

- Heavy duty steel construction
- Base diamond steel deck
- Two removable slanted shelves and high-end handles
- Equipped with ladder holder bracket and bag hanger tabs.
- Powder coated aluminum gray
- Narrow 16"W deck
- (2) 8" center load wheels and (4) 4" swivel end casters. Six wheel design allows cart to swivel on its own radius.



16-60-6W-2SDR-PBX-KT

Benefits:

- Diamond steel deck prevents product from slipping.
- Slanted removable shelves with upturned lip prevents slippage and secures totes in place. Slanted shelf angle makes it easier to see contents of tote.
- Unit provides three shelf storage and picking capacity.
- Ladder holder bracket allows you to carry a step ladder to use for out of reach items or shelves.
- Bag holder offers convenient place to access bags for order picking & packaging.

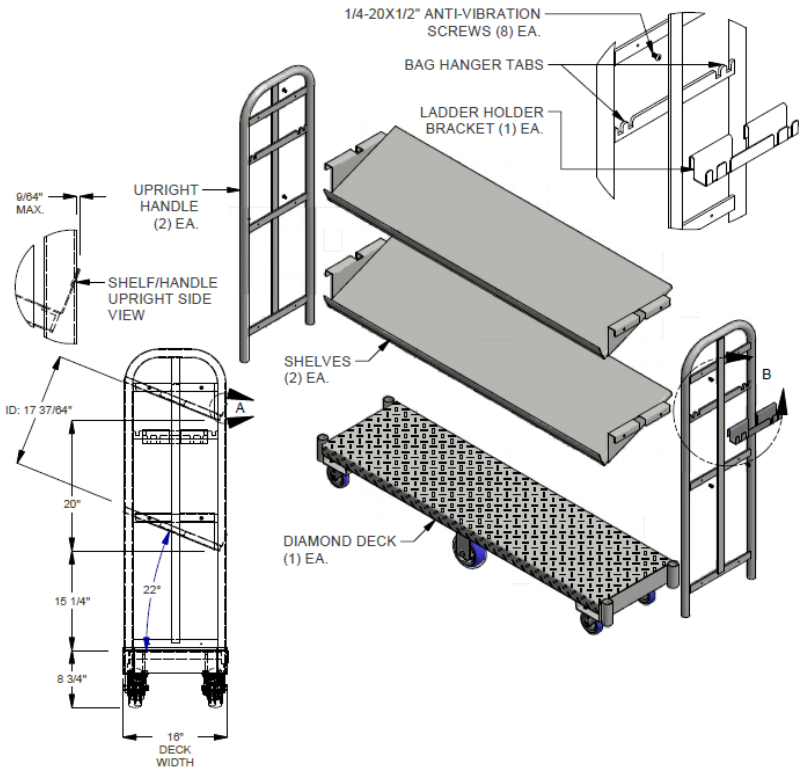
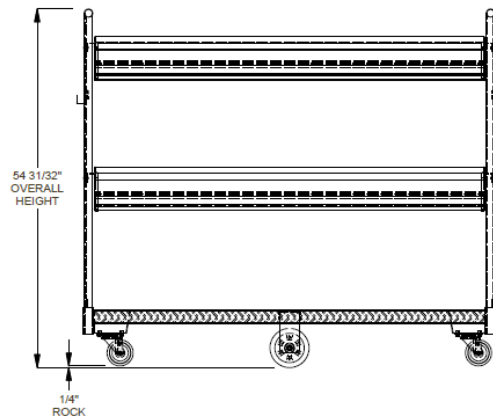
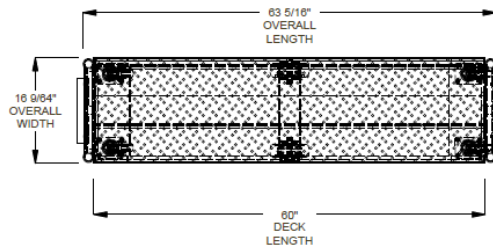




Founded in 1946

U-Boat Picking & Stock Carts

w/ Removable Shelves & Handles



Model Number	Order#	Overall Dimensions						Approx. Ship Wt	
		Width		Length		Height			
		(in)	(mm)	(in)	(mm)	(in)	(mm)	(lb)	(kg)
16-60-6W-2SDR-PBX-KT	1097027	16.1	409	63.3	1608	55	1397	126	57

Caster Information:

- (4) Swivel Plate Casters with 4" Polyurethane Wheel 7351
- (2) Rigid Plate Casters with 6" Polyurethane Wheel 7417

Freight Class: 250



In line with our policy to continually improve our products, Winholt reserves the right to change materials and specifications without notice.