



Founded in 1946

Project: \_\_\_\_\_

Items: \_\_\_\_\_

Quantity: \_\_\_\_\_

Approval: \_\_\_\_\_

Date: \_\_\_\_\_

**OPEN BASE LOCKER**

## Open Base Locker

Multi-User Open Base Steel Lockers can be used in all types of facilities and industries, making this product perfect for any environment. Our variety of designs work for all different needs!

### Features:

- Steel construction
- Open base
- 6 door compartments
- 12" depth
- Sequentially numbered labels provided for easy identification.
- Custom colors available
- Ships fully assembled
- Mesh grid vented

### Benefits:

- All lockers open with door pulls and will accept padlocks or flat key locks (both not included).
- Doors are vented for security and clear identification of personal items.
- Sturdy steel design secures locked items.



**WL-66-OB**

**Custom Colors Available**



Winholt Equipment | 20 Crossways Park North, Suite 205 | Woodbury, New York 11797

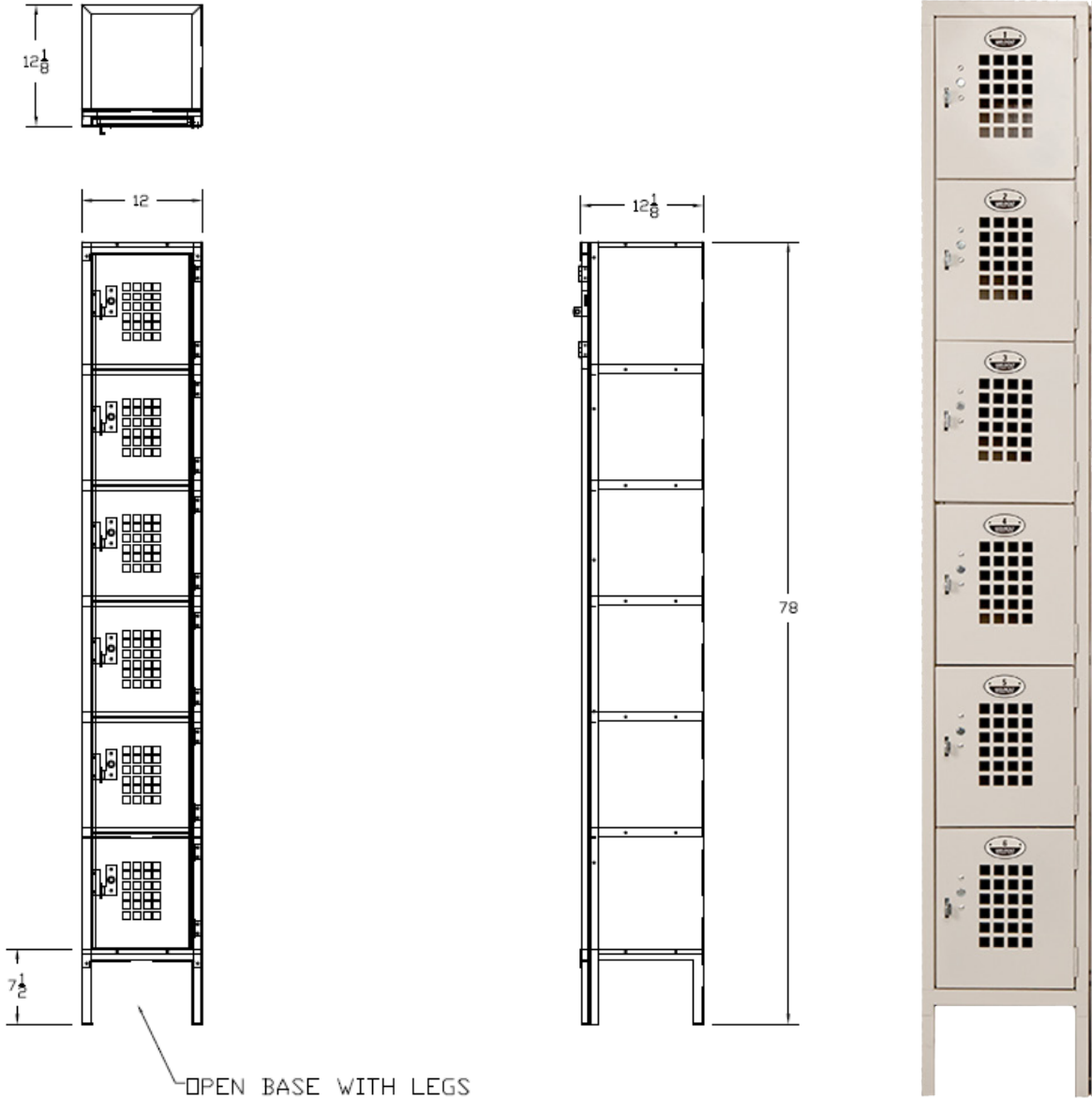
Pennsylvania | Florida | Texas | California

800.444.3595 | sales@winholt.com | www.winholt.com



Founded in 1946

# Open Base Locker



Model Number	Order#	Number of Doors	Overall Dimensions						Approx. Ship Wt	
			Width		Depth		Height		(lb)	(kg)
			(in)	(mm)	(in)	(mm)	(in)	(mm)		
WL-66-OB	685556	6	12	305	12.1	307	78	1981	30	13

Freight Class: 125



In line with our policy to continually improve our products, Winholt reserves the right to change materials and specifications without notice.