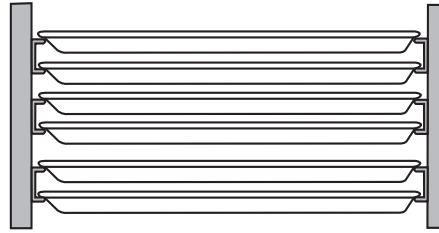


CHANNEL PAN RACKS

- Material: All welded aluminum, C-Channel is 1-1/2" x 1" with a lip of 5/8"
- **Lifetime Warranty Against Rust**
Application: Designed for maximum storage capacity in bakeries, restaurants, industrial areas where high and low profile products are stored.
- Holds:
18" x 26" Sheet Pans by lip
14" x 18" Sheet Pans by lip
- Casters: 5" Polyurethane Swivel Stem

- Rolling Capacity: 800lbs.
- Weight Capacity Per Runner: **30lbs**



C-Channel holds lip of tray

Model Number	Order#	Overall Dimensions			Pan Cap. 18"x26" 14"x18"	Runner Spacing	Approx. Ship Wt
		Width	Length	Height			
		(in)	(in)	(in)	(in)		
ALC-1836	110648	21	27	64	36 72	3	40
ALC-1840	110672	21	27	64	40 80	1½	42

Caster information:
Caster with 5" Polyurethane Wheel 757 (123684)
5" Polyurethane Wheel 7112 (122180)
Freight Class: 250



Option:

XB XHD Reinforced Upright



ALC-1836

WIRE PAN RACK

- Material: Aluminum Frame 1" tubing with Chrome Steel Wire Slides, runner spacing 1-1/2"
- Application: Ideal for cooling, transporting, storing and proofing. Half size racks double as mobile work stations.

- Holds:
18" x 26" Sheet Pans by lip
14" x 18" Sheet Pans by lip
- Casters: 5" Polyurethane Swivel Stem
- Rolling Capacity: 800lbs.
- Weight Capacity Per Runner: **30lbs**

Model Number	Order#	Overall Dimensions			Pan Cap. 18"x26" 14"x18"	Approx. Ship Wt
		Width	Length	Height		
		(in)	(in)	(in)	(lb)	
WP-1836B	111034	21	24	68	36 72	67

Caster information:
Caster with 5" Polyurethane Wheel 757 (123684)
5" Polyurethane Wheel 7112 (122180)
Freight Class: 250



WP-1836B

In line with our policy to continually improve our products, Winholt reserves the right to change materials and specifications without notice.