



Drop-In Cold Pan models 9700IC

model 9718IC 9728IC 9743IC 9757IC 9772IC 9786IC

Description:

Drop-in ice-cooled display pan with one piece stainless steel interior and top. 1" drain, gate valve, and perforated strainer plates provided.

Specifications:

UNIT EXTERIOR: Top and covered corner interior to be constructed of 18 gauge stainless steel. Exterior body to be corrosion resistant steel. 1" high perforated stainless steel bottom strainer plates provided. Studs fitted to each corner for drawing unit down tight against countertop.

UNIT INTERIOR: Interior fitted with 1" drain at one end. Drain nipple supplied with gate valve. Insulated with CFC free, foamed in place polyurethane.

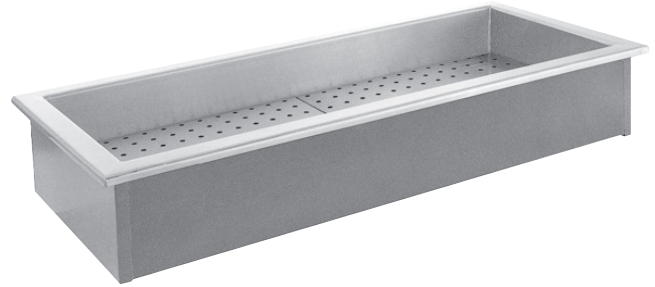
Standard Features:

- All stainless steel top and interior
- 1" drain and gate valve provided
- Stainless, perforated bottom strainer plates provided
- Foamed in place, "CFC free" urethane insulation for ice-cooled display
- Custom sizes available

Options & Accessories:

Adaptor bars

model 9757IC shown



Designed for use with ice.

Model	12"x20" Pan Capacity	O/A Dimension Length	O/A Dimension Width	Cut Out Size Length	Cut Out Size Width	Overall Height*	Ship Wt.
9718IC	1	18.125"	26"	16.75"	24.625"	7.75"	30
9728IC	2	31.125"	26"	29.675"	24.625"	7.75"	85
9743IC	3	43.75"	26"	42.375"	24.625"	7.75"	110
9757IC	4	56.25"	26"	54.875"	24.625"	7.75"	125
9772IC	5	71.25"	26"	69.875"	24.625"	7.75"	145
9786IC	6	85.25"	26"	83.875"	24.625"	7.75"	165

*for gate valve, add an additional 1.75"

