



PROJECT:	MODEL:	QUANTITY:	ITEM NO:

# HEAVY-DUTY ALUMINUM UTILITY CARTS

## For Multi-Purpose Back-Up

### “UC-AL SERIES”



UC-72-609AL



UC-72-512AL

# Aluminum

**Economical and functional aluminum transport for bussing and storage.**

These sturdy aluminum utility carts provide an economical solution for your transport and storage needs. Originally designed for the setting-up and bussing of banquets, the FWE Queen Mary is also ideal for general transportation of heavy loads or extra shelf space.

The Aluminum Queen Mary cart is fabricated from high tensile extruded aluminum and .090 aluminum sheet. Mounted on NSF approved 8" x 2" polyurethane casters, the overall capacity for this cart is 2000 lbs.!

Five and six shelf models are standard, as is a full wrap around perimeter bumper. FWE...the "Choice of the Professionals."

- ◇ Heavy-duty aluminum
- ◇ All welded construction - no rivets
- ◇ Welded tubular construction
- ◇ Full extension bumper
- ◇ 8" polyurethane casters
- ◇ Choice of shelf flange - up or down
- ◇ Two year limited warranty



PROJECT:

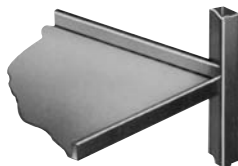
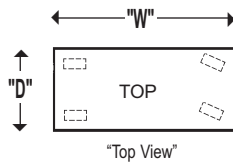
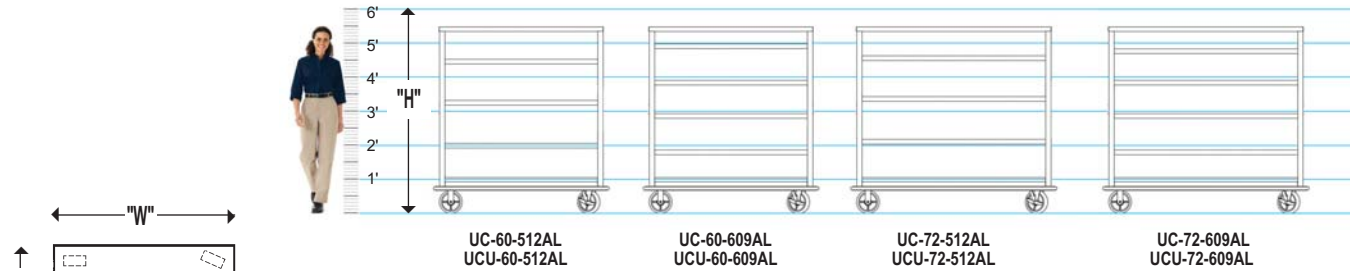
MODEL:

QUANTITY:

ITEM NO:

# SPECIFICATIONS:

## HEAVY-DUTY ALUMINUM UTILITY CARTS For multi-purpose back-up



3 Sides Up - Front Edge Down

MODEL NUMBER	NUMBER OF SHELVES	SHELF SPACINGS (mm)	SHELF SIZE (mm)	OVERALL EXTERIOR DIMENSIONS IN. (mm)			CASTER SIZE	SHIP WT. LBS. (KG)	CUBIC FEET (m <sup>3</sup> )
				HIGH "H"	DEEP "D"	WIDE "W"			
<b>UC-60-512AL</b> Shelf edges down	5	12" (305)	27" x 60" (686 x 1524)	66" (1676)	29" (736)	62" (1574)	8"	147 (66)	68.67 (1.94)
<b>UC-60-609AL</b> Shelf edges down	6	9.25" (235)	27" x 60" (686 x 1524)	66" (1676)	29" (736)	62" (1574)	8"	156 (70)	68.67 (1.94)
<b>UC-72-512AL</b> Shelf edges down	5	12" (305)	27" x 73" (686 x 1854)	66" (1676)	29" (736)	75" (1905)	8"	180 (81)	83.07 (2.35)
<b>UC-72-609AL</b> Shelf edges down	6	9.25" (235)	27" x 73" (686 x 1854)	66" (1676)	29" (736)	75" (1905)	8"	190 (86)	83.07 (2.35)
<b>UCU-60-512AL</b> Shelf edges up	5	12" (305)	27" x 60" (686 x 1524)	68" (1727)	29" (736)	62" (1574)	8"	147 (66)	70.75 (2.00)
<b>UCU-60-609AL</b> Shelf edges up	6	9.25" (235)	27" x 60" (686 x 1524)	68" (1727)	29" (736)	62" (1574)	8"	156 (70)	70.75 (2.00)
<b>UCU-72-512AL</b> Shelf edges up	5	12" (305)	27" x 73" (686 x 1854)	68" (1727)	29" (736)	75" (1905)	8"	180 (81)	85.59 (2.42)
<b>UCU-72-609AL</b> Shelf edges up	6	9.25" (235)	27" x 73" (686 x 1854)	68" (1727)	29" (736)	75" (1905)	8"	190 (86)	85.59 (2.42)

Consult Factory for SHIPPING CLASS

\*Shelf edges up\* models have 3 sides up with the front edge down.

**CONSTRUCTION.** Shelves shall be constructed of .090 thick aluminum sheet, choice of shelf flange of three (3) shelf edges up or three (3) shelf edges down.

**BUMPER.** Full wraparound aluminum channel, bolted to frame, with snap-in, non-marking replaceable vinyl cushion.

**CASTERS.** Shall have 8" polyurethane tire casters with solid metallic disc hub; reinforced forged yoke and raceways. Zerk grease (lubrication) fitting. Plate mounted and bolted to frame in standard configuration of two (2) rigid, and two (2) swivel with brake.

**HANDLE.** Unit shall be provided with one (1) aluminum tubing welded to unit.

**SHELVES.** Shelves shall be heavy-duty .090 thick aluminum sheet with choice of shelf flange of three (3) shelf edges up or three (3) shelf edges down with marine edges.

**Optional Accessories:**

- All swivel casters
- Larger casters
- Smaller casters

**FWE Products are used by major companies world-wide. We can modify, design, or custom build equipment to fit your special requirements.**

**Food Warming Equipment Company, Inc.**

P. O. Box 1001  
Crystal Lake, IL 60039-1001 USA  
815-459-7500 • Fax: 815-459-7989

MANUFACTURING FACILITIES:  
5599 Hwy. 31 West • Portland TN 37148  
615-325-2774 • Fax: 615-628-0480

**800-222-4393**  
www.FWE.com  
sales@fweco.net

FWE products may be covered under one or more of the following U.S. patents: 288,299;238,300;3,952,609;4,192,991.

All specifications subject to change without notice.  
© 14 FWE Food Warming Equipment Company, Inc.