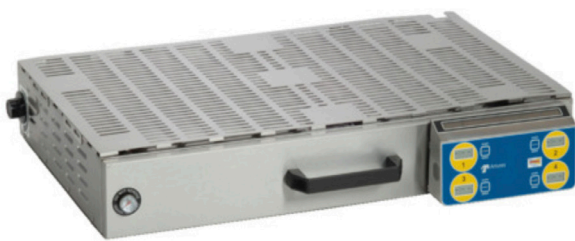


Warmer Drawer | WD



Ready to serve but tastes like made to order—the Warmer Drawer keeps products fresh and delicious for customers. It features a precision thermostat to adjust the temperature required for your product.

The WD-50 is designed specifically for holding protein-based products. With a capacity of one two-thirds-size pan and two one-thirds-size pans, this unit can hold 60-80 standard hot dogs for up to two hours. Use the WD-50 separately, or it can be stacked or fit under the HDC-50 Hot Dog Corral. The WD-50 also includes the WDT-4, a solar-powered timer that allows operations to monitor the length of time food product is held. It has four programmable channels preset with a two-hour hold time and mounts easily with a magnet and offset bracket.



WD-50 Warmer Drawer



Space Saving

Designed to work with HDC-50A Hot Dog Grill

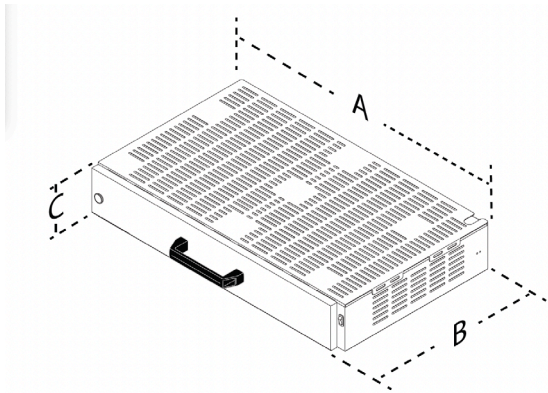


Precise Holding

Temperature is controlled by a true thermostat and not any locked settings.



Warmer Drawer | WD




Features:

- Holds 60-80 standard hot dogs
- Easy to clean
- Precision thermostat for maintaining grill temperature.
- Two-hour hold time for hot dogs
- Includes solar timer for monitoring holding times
- Stainless steel construction

Electrical Ratings

Dimensions

Model & Mfg. No.	Capacity	Approvals	Plug	Volts	Watts	Amps	Hz.	Width	Depth	Height	Shipping Weight
WD-50 9400166	Warmer Drawer		NEMA 5-15P	120	1400	11.7	50/60	32 1/2" (826 mm)	21 7/8" (556 mm)	5 3/8" (137 mm)	63 lbs. (29 kg)

Dimensions are for item without shipping box. Shipping weight includes item and shipping box.