



## Features

### **Eco-Friendly Refrigerant**

R290 refrigerant with a global warming potential (GWP) of 3

### **Cabinet Capacity**

Internal area of 9.59ft<sup>3</sup> with one (1) heavy-gauge wire shelf — adjustable in 1/2" increments using stainless steel pilasters

### **Easy to Clean**

Aluminum interior with coved corners and finished edges, removable shelf, plus a top compartment crumb tray

### **Magnetic 'Thermo Rubber' Gaskets**

Heavy-duty, stainless steel doors with magnetic Thermo Rubber gaskets ensure an airtight cabinet

### **Heavy-Duty Soft Casters**

Secured to a 12-gauge steel base to ensure years of worry-free operation

### **Elevated Refrigerated Rail**

Raise key ingredients closer to the crew for easy access — holds up to seven (7) 2-quart food jars

### **High-Efficiency Refrigeration System**

Forced air circulation provides a uniform temperature throughout the cabinet

### **Refrigerated Countertop Compartment**

Keep key ingredients always within reach — holds up to twelve (12) 3-1/2 quart food jars or ten (10) 1/6 size pans with pan adapters included

### **High-Strength Doors**

Heavy-duty, stainless steel doors assembled using high-load brackets for long-lasting durability

### **Stainless Steel Exterior**

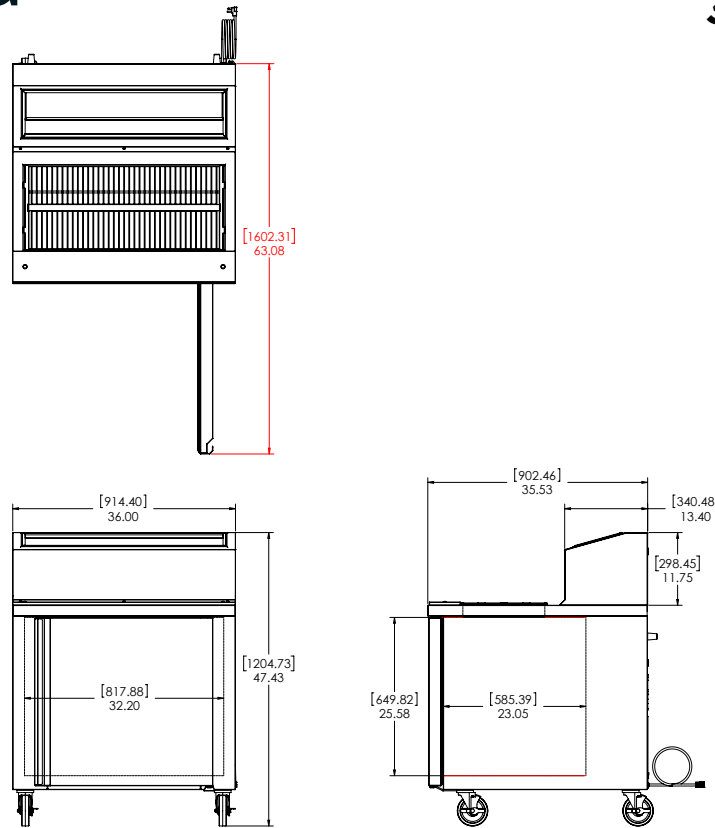
Galvanized back and bottom reduces the risk of corrosion

### **High-Density Insulation**

Foamed-in-place, CFC-free polyurethane insulation for maximum strength, rigidity, and insulation

### **Cutting Board**

Removable 5" polyethylene cutting board provides a large durable work surface



## Technical Specifications

<b>Electrical Requirements</b>	115v/60hz/1ph/2.4A/NEMA 5-15P Plug
<b>Product Dimensions</b>	36"W x 47.43"H x 35.53"D (91.44cm x 120.47cm x 90.25cm)
<b>Product Weight</b>	255lbs (115.67kg)
<b>Shipping Dimensions</b>	41"W x 52"H x 42"D (104.14cm x 132.08cm x 106.68cm)
<b>Shipping Weight</b>	275lbs (124.74kg)
<b>Shipping Cubic Dimensions</b>	51.82ft <sup>3</sup> (1.47m <sup>3</sup> )
<b>Temperature Range</b>	36 to 40 (2.2 to 4.4°C)
<b>Refrigerant</b>	R290
<b>Charge Level</b>	4.2oz (119 grams)
<b>Insulation</b>	Foamed-in-place, CFC-free polyurethane

<b>Exterior Construction</b>	Stainless steel exterior with galvanized back and bottom
<b>Interior Construction</b>	Aluminum interior with covered corners and finished edges
<b>Doors</b>	One (1) right-hand swing door
<b>Pan Well Capacity</b>	Twelve (12) 3-1/2 quart pans or ten (10) 1/6 size pans
<b>Rail Capacity</b>	Seven (7) 3-1/2 quart pans, adapters included
<b>Internal Capacity</b>	8.59ft <sup>3</sup>
<b>Rail Temperature</b>	36 to 40°F
<b>Door Gasket</b>	Santoprene™
<b>Shelves</b>	One (1) heavy-gauge stainless steel wire shelf, removeable
<b>Casters</b>	Four (4) 5" heavy-duty soft casters, two (2) locking
<b>Certifications</b>	ETL Safety, ETL Sanitation
<b>Warranty</b>	1-year parts and labor, 5-year compressor (part only)

Model Number	Description
SKRN36-ESUS1	Fountainette, 36", 115v/60hz/1ph, single right-hand swing door, 5" cutting board, 5" heavy-duty casters (two locking), NEMA 5-15P

To learn more about **Refrigerator**, visit [silverking.com](http://silverking.com)