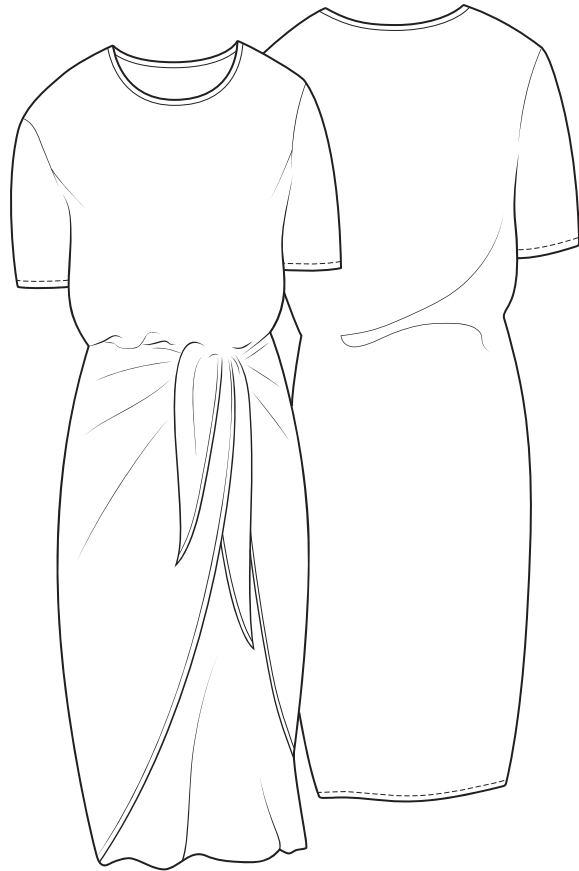


# THE PAREO DRESS



A pull on dress with integrated wrap ties designed for lighter weight woven fabrics. When tied the top part of the dress, flatteringly blouses out, while the wrap adds definition around the hip area.

[themakersatelier.com](http://themakersatelier.com)

## The Pareo Dress

UK size	4	6	8	10	12	14	16	18	20	22
Bust (cm)	71	76	81	86	91	96	101	106	111	116
Waist (cm)	54	59	64	69	74	79	84	89	94	99
Hips (cm)	79	84	89	94	99	104	109	114	119	124
Bust (inch)	28	30	32	34	36	38	40	42	44	46
Waist (inch)	21	23	25	27	29	31	33	35	37	39
Hips (inch)	31	33	35	37	39	41	43	45	47	49

### Finished measurements

#### Length side neck to hem

(cm)	118.5	119	119.5	120	120.5	121	121.5	122	122.5	123
(inch)	46 <sup>3</sup> / <sub>4</sub>	47	47	47 <sup>1</sup> / <sub>4</sub>	47 <sup>1</sup> / <sub>2</sub>	47 <sup>3</sup> / <sub>4</sub>	48	48 <sup>1</sup> / <sub>4</sub>	48 <sup>1</sup> / <sub>4</sub>	48 <sup>1</sup> / <sub>2</sub>

#### Sleeve overarm side neck to cuff

(cm)	34	35	36	37	38	39	40	41	42	43
(inch)	13 <sup>1</sup> / <sub>2</sub>	13 <sup>3</sup> / <sub>4</sub>	14	14 <sup>1</sup> / <sub>2</sub>	15	15 <sup>1</sup> / <sub>4</sub>	15 <sup>3</sup> / <sub>4</sub>	16	16 <sup>1</sup> / <sub>2</sub>	17

#### Sleeve hem circumference

(cm)	29.5	31	32.5	34	35.5	37	38.5	40	41.5	43
(inch)	11 <sup>1</sup> / <sub>2</sub>	12 <sup>1</sup> / <sub>4</sub>	12 <sup>3</sup> / <sub>4</sub>	13 <sup>1</sup> / <sub>4</sub>	14	14 <sup>1</sup> / <sub>2</sub>	15	15 <sup>3</sup> / <sub>4</sub>	16 <sup>1</sup> / <sub>4</sub>	17

#### Bust at underarm

(cm)	85	90	95	100	105	110	115	120	125	130
(inch)	33 <sup>1</sup> / <sub>2</sub>	35 <sup>1</sup> / <sub>2</sub>	37 <sup>1</sup> / <sub>2</sub>	39 <sup>1</sup> / <sub>2</sub>	41 <sup>1</sup> / <sub>2</sub>	43 <sup>1</sup> / <sub>2</sub>	45 <sup>1</sup> / <sub>2</sub>	47 <sup>1</sup> / <sub>2</sub>	49 <sup>1</sup> / <sub>2</sub>	50 <sup>1</sup> / <sub>2</sub>

#### Hip

(cm)	90	95	100	105	110	115	120	125	130	135
(inch)	35 <sup>1</sup> / <sub>2</sub>	37 <sup>1</sup> / <sub>2</sub>	39 <sup>1</sup> / <sub>2</sub>	41 <sup>1</sup> / <sub>2</sub>	43 <sup>1</sup> / <sub>2</sub>	45 <sup>1</sup> / <sub>2</sub>	47 <sup>1</sup> / <sub>2</sub>	49 <sup>1</sup> / <sub>2</sub>	51 <sup>1</sup> / <sub>2</sub>	53 <sup>1</sup> / <sub>2</sub>

#### Hem

(cm)	95	100	105	110	115	120	125	130	135	140
(inch)	37 <sup>1</sup> / <sub>2</sub>	39 <sup>1</sup> / <sub>2</sub>	41 <sup>1</sup> / <sub>2</sub>	43 <sup>1</sup> / <sub>2</sub>	45 <sup>1</sup> / <sub>2</sub>	47 <sup>1</sup> / <sub>2</sub>	49 <sup>1</sup> / <sub>2</sub>	51 <sup>1</sup> / <sub>2</sub>	53 <sup>1</sup> / <sub>2</sub>	55 <sup>1</sup> / <sub>2</sub>

### Fabric required

120 wide	2.70	2.70	2.70	2.70	2.70	3.30	3.30	3.30	3.30	3.30
150 wide	2.10	2.10	2.10	2.10	2.10	2.20	2.20	2.20	2.20	2.20
48" wide	3yd	3yd	3yd	3yd	3yd	3 <sup>3</sup> / <sub>4</sub> yd	3 <sup>3</sup> / <sub>4</sub> yd	3 <sup>3</sup> / <sub>4</sub> yd	3 <sup>3</sup> / <sub>4</sub> yd	3 <sup>3</sup> / <sub>4</sub> yd
60" wide	2 <sup>1</sup> / <sub>4</sub> yd	2 <sup>1</sup> / <sub>4</sub> yd	2 <sup>1</sup> / <sub>4</sub> yd	2 <sup>1</sup> / <sub>4</sub> yd	2 <sup>1</sup> / <sub>4</sub> yd	2 <sup>1</sup> / <sub>2</sub> yd	2 <sup>1</sup> / <sub>2</sub> yd	2 <sup>1</sup> / <sub>2</sub> yd	2 <sup>1</sup> / <sub>2</sub> yd	2 <sup>1</sup> / <sub>2</sub> yd

To make a full length dress with a finished length of 20cm or 8 inches longer, add an additional 40cm or <sup>1</sup>/<sub>2</sub>yd to the above quantities.

**Also required** - 70cm x 16mm or <sup>3</sup>/<sub>4</sub>yd x <sup>1</sup>/<sub>2</sub> inch bias binding and matching sewing thread.

### Fabric Suggestions

All light weight woven fabrics: cotton, linen, silk, Tana lawn, Tencel, viscose, poly/viscose mixes.