



DSP3DPS

HIGH-TEMPERATURE GLASSWASHER WITH DRAIN PUMP

The LAMBER DSP3DPS is a high-performance commercial glasswasher, designed to meet the rigorous demands of professional kitchens, bars, and foodservice establishments. Its compact footprint and durable stainless-steel construction make it an excellent choice for businesses requiring efficiency, reliability, and ease of use.

Technical Specifications

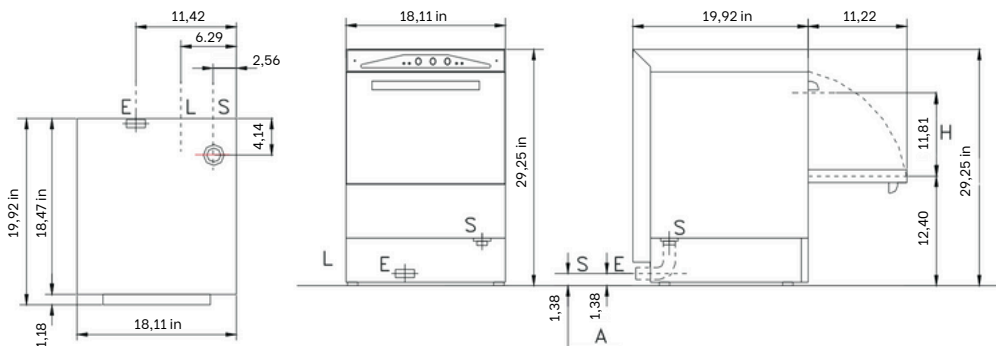
Model: DSP3DPS
Basket Size: 16" x 16"
Power Supply: 1 phase
Voltage: 208V
Frequency: 60Hz
Washing Pump Power: 210W
Wash Tank Heating Elements: 1000W
Rinse Tank Heating Elements: 3000W
Total Power Rating: 3200W
Maximum Current Intensity: 16A
Clearance for Plates: 11.81"
Work Height: 12.40"
Tank Capacity: 20L
Boiler Capacity: 3L
Pump Delivery: 160L/min
Water Consumption Per Cycle: 2.00L
Water Consumption Per Hour: 60L
Dynamic Water Pressure: 20 ± 5 psi
Recommended Water Hardness: 5 ÷ 10 TH(°F)
Rinse Water Temperature: 179 ÷ 194°F
Water Inlet Connection: 3/4" G
Water Outlet Connection: 3/4 G
Net Weight: 35 kg (35 lbs)
Gross Weight: 40 kg (40 lbs)
Packing Size: 19.68" x 22.05" x 31.00"
Noise Level: <70 dB(A)

Baskets included: (16" x 16")

2 flat baskets (CC00052)
1 saucer insert (CC00049)
1 cutlery insert (CC00045)

Key Features

- ✓ Includes a Drain Pump for easy water removal in non-gravity drain environments.
- ✓ Compact 16" x 16" basket size, ideal for bars and small kitchens.
- ✓ Durable stainless-steel 18/10 AISI 304 construction for long-term use.
- ✓ Fast 2-minute wash cycle for high productivity.
- ✓ Integrated wash and rinse temperature thermometers for precise operation.
- ✓ Stainless steel rotating wash and rinse arms for even water distribution.
- ✓ Easy maintenance with an extractable control panel.
- ✓ Rinse aid and detergent dispensers for optimized cleaning.
- ✓ Automatic tank filling for convenience.
- ✓ Door safety device for enhanced protection.
- ✓ Thermocontrol system ensures the correct rinse temperature for every cycle.
- ✓ Security thermostat for overheating protection.
- ✓ UL and UL Sanitation Certified for safety compliance.



A	Maximum height of drain from floor	
E	Water inlet	3/4" G
L	Electric input	208/1~60Hz
S	Drain	32 mm - 1"1/4 G

