

BENCHMARK



Core Collections 2019

FOR THE LOVE OF MAKING

Widely regarded as one of the UK's leading furniture makers and a powerhouse of craft, Benchmark design and make beautiful, healthy, sustainable and ethical furniture for workspaces, institutions, hospitality and the home.

All of our furniture is made in our own workshops in West Berkshire and Dorset in England.

Made with natural, sustainable and non-toxic materials, our furniture meets the standards for WELL certified buildings.



Made WELL



DESIGNED FOR WELL-BEING

Inspired by the principles of biophilic design, and drawing on the restorative power of nature, we make furniture that has been designed with depth of meaning, function and elegance using natural materials, colours and texture, soft profiles and ergonomic shapes.

We aim to create timeless furniture that helps to make spaces more human, welcoming and personal.



MADE TO LAST

At the heart of our workshop lies a dedicated team of skilled and passionate craftsmen.

With a strong kinship as our base, we focus on quality of materials and making to offer our customers beautiful furniture that will last for generations.

The longevity of our furniture in itself means that it is a better choice for our environment. Our use of natural materials ensures that it is reusable, recyclable or biodegradable.



SUSTAINABLE MANUFACTURING

Sustainability plays a part in every decision we make. We consider the materials we use, our products and the way we make them; as well as the way we manage our workshops, our employment practices and our waste.

We were one of the very first furniture makers in the UK to have chain of custody certification from the Forest Stewardship Council® (FSC) and the Programme for the Endorsement of Forest Certification (PEFC). We are proud to be twice winners of the Queen's Award for Sustainable Development.



Made WELL



NATURAL UPHOLSTERY

In an effort to challenge the way that upholstery is usually made, we have chosen not to use plastic foam. Instead we have developed upholstery, in collaboration with the Naturalmat Company, using natural, sustainable and biodegradable materials - coir, latex, sheep's wool and recycled cotton.

This is better for our health as well as overcoming the significant environmental concerns surrounding the disposal of plastic foam in landfill.



NON-TOXIC MATERIALS AND FINISHES

We upholster in natural materials that are inherently flame retardant and stain resistant, enabling us to supply furniture that meets fire regulations without the need for toxic fire-retardant chemicals.

We use natural oil finishes and water based glues that have low levels of harmful volatile organic compounds (VOCs). Our oils deliver a finish that protects whilst keeping the timber looking and feeling as natural as possible.

Declare. 

TRANSPARENCY

With a transparent approach, we try to share our knowledge and encourage a sustainable and circular mindset in our customers and our industry.

Our furniture has Declare Red List Free labelling - an internationally recognised ingredients list for products that shows where it comes from, what it is made of and where it goes at the end of its life. This shows that our furniture does not contain harmful chemicals and meets the standards required for WELL certified buildings.





Sage

A Wellness Collection designed by
David Rockwell



The Sage Collection has a specific focus on human health and well-being within the built environment and meets the standards required for WELL certified buildings.

The tenets of biophilic design inspired the collection, with its natural materials, colours and textures, rounded profiles and inviting ergonomic shapes.







Sage is made with only natural, sustainable non-toxic materials and finishes.

We have chosen not to use plastic foam and to develop the collection with entirely natural materials – coir, latex, sheep's wool, and recycled cotton.







The Sage Collection comprises:

Sit-Stand Desk, Workbench & Meeting Table

Dining Table

High Sofa

Low Sofa

Bench

Upholstered Bench with table

Credenza

Credenza with Shelves

Coffee

Side Table





OVO

Designed by Foster + Partners



The boldness and simplicity of OVO demands perfection of our craft.

A tactile collection with soft geometry and careful detailing for understated elegance.





Launched in the UK in 2018,
the OVO collection comprises

Dining Tables
Meeting & Reading Tables
Shelving
Credenza
Stool & Bar Chair
Benches
Occasional Tables
Planter







A close-up photograph of a dark-stained wooden chair. The focus is on the curved seat and the upper part of the backrest. The seat is a wide, shallow bowl shape with a smooth, slightly textured finish. The backrest features several vertical slats. The wood grain is clearly visible, and the lighting creates soft shadows and highlights on the curves and joints of the chair.

GLEDA
Designed by Space Copenhagen



Founded upon a mutual commitment to craftsmanship and a curiosity to develop a new interpretation of the classic spindle chair, Benchmark began their collaboration with Space Copenhagen in 2017 with the launch of the Gleda Easy Chair.



A timeless collection that is visually light, crafted in solid oak with intricate brass details and relaxed upholstery.









The Gleda collection was extended in 2018 to include sofa, dining chair and occasional tables.



MUSE

Designed by
Space Copenhagen







Inspired by Donald Judd's radical and minimalist universe, the Muse Sofa, designed by Space Copenhagen, features natural timber combined with 100% natural, non-toxic, sustainable upholstery





TAILORED AND BESPOKE COMMISSIONS

Because all of our furniture is made in our own workshops, we are able to tailor our designs to suit our clients – whether that's a change in dimensions, timber, finish or even a custom detail.

As well as our furniture range, we work with many of the world's leading architects and designers on bespoke commercial projects

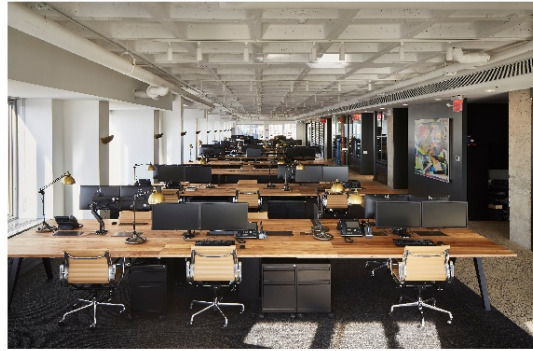
We have workshops for milling, cabinet making, veneering, finishing, metalworking and upholstery as well as 5-axis CNC machining.

Our in-house design team develop designs from initial briefs and sketch proposals through to full CAD drawings and modelling. They co-ordinate and plan the seamless delivery of project through to installation.

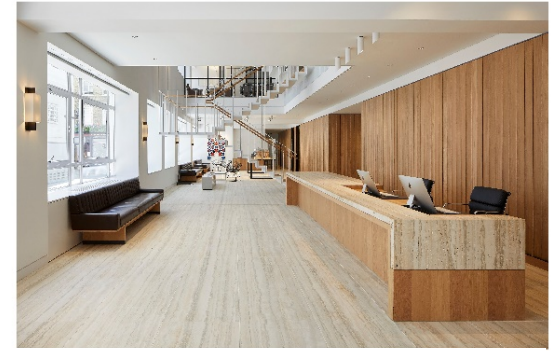




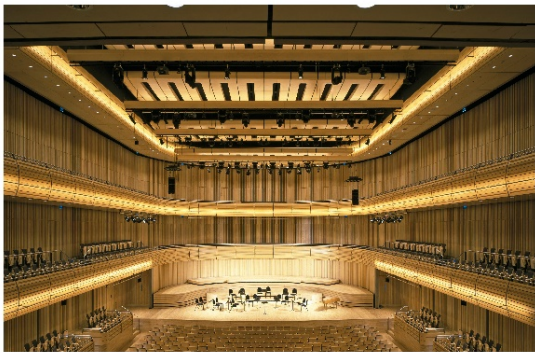
WORCESTER COLLEGE, OXFORD



1250 BROADWAY, NEW YORK



25 SAVILE ROW, LONDON



THE SAGE, GATESHEAD



CASE WESTERN RESERVE UNIVERSITY, OHIO



OLD SPITALFIELDS MARKET, LONDON



REGENT'S PLACE, LONDON



QUEEN'S COLLEGE, OXFORD



ST PAUL'S CATHEDRAL, LONDON

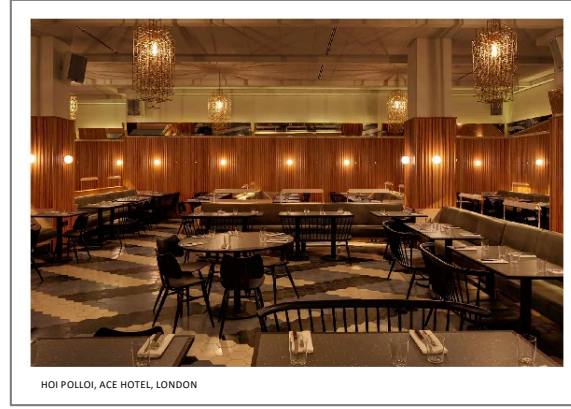




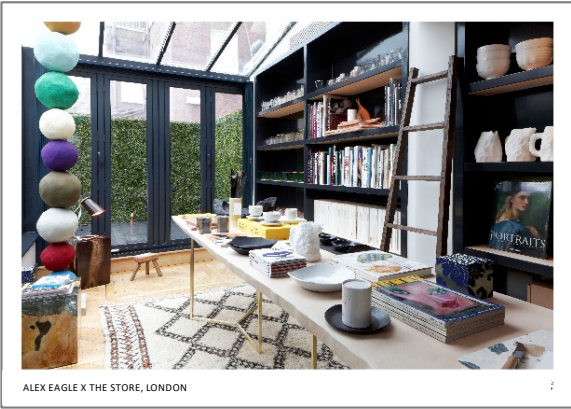
COPYRIGHT BUILDING, LONDON



STOWE SCHOOL



HOI POLLOI, ACE HOTEL, LONDON



ALEX EAGLE X THE STORE, LONDON



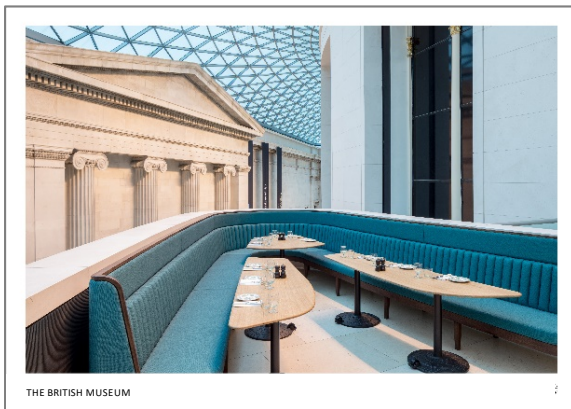
LEICESTER CATHEDRAL



PAUL SMITH, LONDON



WALLPAPER* HANDMADE, MILAN 2015



THE BRITISH MUSEUM



10 DOWNING STREET, GREAT CAMPAIGN



our workspace clients

5 Fleet Place, London
10 Brock Street, London
19 Management, Oxford
55 Baker Street, London
Aecom HQ, London
Angel Building, London
Belgrave House, London
BLM Law
Broadwick House, London
Cardinal Asset Management, London
Cape Western Reserve University, Ohio
Central School of Speech and Drama, London
Centro Building, London
Chanel HQ London
Cisco Meraki
City Lofts, Reading
Cheil UK, London
Comcast, Philadelphia
Conran Ltd
Coop HQ
Earth Awards
Deutsche Bank, Finsbury Circus

Derwent London
Global Holdings, London & New York
Grimshaw Architects HQ
Gucci, London
Gressey Street, London
Heron House, London
Kew Herbarium
Kirkland & Ellis HQ
Liberty Global
Madison Capital, New York
Minerva plc
Morey Smith
MS Amlin
National Trust, Swindon
Netflix
New Garden House, London
Nyetimber
Olivers Yard, London
One Canada Square
ORCA
Plantation Place, London
Prepay Solutions

Price Waterhouse Cooper, London
Regent's Place
Sea Container House
Scottish Provident, Dublin
St Botolph's, London
Swiss Re, London
The Cleveland Clinic
The Furniture Practice
The Work Hotel, Hemel Hempstead
T Mobile HQ
Unruly
Verde SW1
Vielife, London
Visual DNA, London
Vodafone World HQ
Waterbridge Property, Reading
Walbrook, London
Woodland Trust HQ
Wieden & Kennedy, London
WPP

our retail clients

Albion Restaurant & Shop
Alex Eagle x The Store
Alnwick House
Ashmolean Museum
British Museum
Conran Shop, Worldwide
Cotto Bakery, Oxford
Dalesford Farm Shop
Divertimenti, London
Edinburgh Castle

Fenwicks
Harrods
Heals
Liz Earle
Liberty, London
National Gallery
National Trust
Natural History Museum
Natural Museum of Science & Industry
Neals Yard, Covent Garden, London

Old Spitalfields Market
Paul Smith
Reiss
Selfridges, London
Sheepdrove Organic Farm & Eco Conference
Centre
The Science Museum
The Store x Soho House, Berlin
The Quince Tree, Henley



our hospitality clients

HOTELS

Ace Hotel, Shoreditch
The Belfry
The Berkeley, London
Berns Hotel, Stockholm
The Boundary, London
Calcott Manor, Gloucestershire
Castell Deudraeth, Portmeirion
The Connaught, London
Das Treist, Vienna
The Dorchester
Dormy House Hotel, Cotswolds
Eynsham Hall, Oxfordshire
Farnham House Hotel, Ireland
Fitzwilliam Hotel, Dublin
Forbury Hotel, Reading
Great Eastern, London
Great Northern, London
The Hempel
Hotel Barcelona
Kandinsky Hotel
Portmeirion Hotel
The Old Bank, Oxford
The Old Parsonage, Oxford
The Pier, Harwich
Radisson Blue Portman
Rosewood London
Runnymede Hotel
St Enedoc, Cornwall
The Royal Turnberry
The Wellington Arms, Baughurst

BARS & RESTAURANTS

Alcazar, Paris
Albion Cafe, London
Almedia, London
The American Bar, London
ASK, UK
Bank Restaurant, London
Beast, London
The Bell at Ramsbury
Benugo, UK
Bibendum, London
Bluebird, London
Bordeaux Quay, Bristol
Bond & Brook, Fenwicks, London
Boundary Restaurant, London
Branksome Chine, Dorset
Busaba, UK
Butlers Wharf Chop House, London
Byrons UK
Blueprint Cafe, London
The Botanist, London
Cafe Rouge, Leeds
Cantina Del Ponte, London
Carluccios Worldwide
Chez Gerard UK
Cocoon
Coles, Marlborough
Coq D'Argent, London
Cotto Bakery, Oxford
Eden Project, Cornwall
Eyre Brothers

Fishworks
Floridita, Meza, Casa, London
Fredericks Bar
Giraffe UK
Guastavinos, New York
Hakkasan, London
HKK, London
Harvey Nicholls, London
Jam House, Birmingham
Jamie's Italian, UK
JM Keating, Dublin
Koffman's, London
Le Pont De La Tour, London
Le Talbooth
Lutyens, London
Massimo, London
MARC Restaurants
Mere Restaurant
Mr Fogg's, London
Neal Street Restaurant
Notting Hill Brasserie
The Oyster Shed
Orrery
Parabola at The Design Museum
Paternoster Chop House, London
Pizza Express UK
Princi, London
Quaglinos, London
The Quince Tree, Henley
Quod Bar & Grill, London
Rick Stein

Royal Exchange, London
Rocksalt, Folkestone
Sartoir
Senso
Slimbridge
Smiths of Smithfield, London
Sophie's Steakhouse & Grill, London
Swan at The Globe, London
The Swan, West Malling
The Quince Tree, Henley
Westfields, London
Wright Brothers, London
Yauatcha Bar
Zinc Bar & Grill
Zizi UK

CLUBS

American Airlines, Paris
Ark Hills Dining Club & Spa, Tokyo
Bowood Golf Club, Wiltshire
British Airways Concorde Room,
New York
Cathay Pacific, Hong Kong
Eight Members Club, London
Groucho Club, London
House of St Barnabas, London
IOC Hospitality Suite, London 2012
Roppongi Hills Club & Spa, Tokyo
Soho House, Worldwide



our public buildings and institution clients

Ashmolean Museum, Oxford

Banbury Museum, Oxford

The Barbican

Birmingham Medical School, Birmingham

Brasenose College, Oxford

British Museum

British Film Institute

Bryanston School

Cape Western Reserve University

Cloth Workers Hall

Design Museum, London

Douai Abbey

Dulwich Picture Gallery, London

Eden Project, Cornwall

Edinburgh Castle

Geffrye Museum, London

Hamiltons Gallery, London

Hereford Cathedral

Kew Gardens Herbarium

King's College, Taunton

Kindersley Biodiversity Centre, Berkshire

Leicester Cathedral

London Library

Maggie's Manchester

National College of School Leadership,
Nottingham

National Gallery, London

Natural History Museum, London

National Museum of of Science & Industry

Norton Museum, Florida

Open Air Theatre, Regents Park

Old Indian Institute, Oxford

Oxford Playhouse,

Oxford Pembroke College,

Queen's College Oxford

Oundle School

RCA

Runnymede Borough Council

Royal Academy of Arts, London

Royal Court Theatre, London

Royal Museum of Edinburgh

Saatchi Gallery, London

Science Museum, London

Siad Business School, Oxford

St Anne's College, Oxford

St Catherine's College, Oxford

St Paul's Cathedral

Steam Museum, Swindon

Sterling Castle

Strawberry Fields Primary School, Leeds

Stowe School

Tate Gallery, London

The Sage, Gateshead

University of Cambridge Plant Growth Facility

University of Nottingham

University of Greenwich

Valence House

V&A Museum

Westminster Abbey

Worcester College, Oxford



thank you

INFO@BENCHMARKFURNITURE.COM

+44 1488 658184

BATH ROAD, KINTBURY, HUNGERFORD, BERKSHIRE,

RG17 9SA

